

Issue

13

Fall 2017

The Key

Join us for the PKD National Comprehensive Tournament
at Tennessee State University, Nashville, TN
March 13-17, 2018

The Newsletter of Pi Kappa Delta



Highlights in this issue:

- President's Welcome
- Professional Development
- Grant Information
- Tournament Invitation
- Nashville Travel Guide
- Historian's Report
- Editor's Report
- Student's Welcome Letter
- Treasurer's Report
- Program Assistance Fund Info
- PKD at NCA
- PD Conference Info
- PKD NCA Social
- Archivist's Report
- PKD Tournament Entry Data
- DACA Statement
- DACA Guidance for Teams



The Pi Kappa Delta National Archive

Greetings from the Pi Kappa Delta National Archives! Yes, there is one now in case you have not heard. I am your archivist for the collection, Leslie Drake. The National Archives is now established at Gangwish Library, Ottawa University in bustling Ottawa, Kansas. As most of you are aware Pi Kappa Delta began primarily at Ottawa University (At least the constitution was created here and the first PKD chapter) in 1913 so it seemed a fitting place for its archives to be located. Previous to this at the old Meyers Library there were no archive facilities, but when Gangwish Library was completed in 2015 it contained a large temperature –controlled space for archival storage. The collection is still in a very raw stage. There is still much processing to do and documents are still in the process of being sent to the archives. In time, the collection will be massive, and continually growing to match a dynamic organization. However, progress has been made in both sorting and processing what we have so far, and in digitizing a small portion of the collection in Artstore Shared Self Commons. You can access what has been digitized by going to:

www.ssccommons.org

From there choose “Browse Collections” and in the drop down menu locate: “Ottawa University Gangwish Library: The Pi Kappa Delta Collection.” In the coming weeks these digital items will grow. One project at the moment is digitizing the entire *Forensic* collection from its inception in 1915 to the present. In the future there will also be a way to access visually all the National Tournaments from the first in 1916 (Washburn University, Topeka, Kansas) to the present. I will also strive in future issues of *The Key*, if space permits, to bring interesting images to you as well as archive news and projects. I am grateful for the opportunity to help shape this collection and I hope it will be an inspiration to you.

Leslie Drake
Archivist
Pi Kappa Delta Collection



Historian's Report Susan Millsap

This summer the Council was able to tour our new archive space at Ottawa University. I am so excited to see the possibilities that exist. Leslie Drake is doing a fantastic job sorting and organizing our historical records and artifacts. The digitizing of documents will be a great source for research and for maintaining our organizational culture. I encourage everyone to take a look.

It also not too early to begin thinking about nominating an alumnus from your chapter for the Order of Attainment or for nominating a PKD member for the Hall of Fame. These recognitions will be presented at our convention tournament in 2018. Send me your nominations now so that we can keep the process moving forward. Good luck as we start a new academic and competitive year!



Two items from the newly opened Pi Kappa Delta Archives at Ottawa University:

A typewriter and several trophies that date from the founding of Pi Kappa Delta (left), and a very early version of Pi Kappa Delta's signature key (right). These, along with literally thousands of other items are currently being organized, and catalogued. Whenever possible, items will be digitally scanned and made available to members of the public.



Are you interested in hosting a future National Comprehensive Tournament (NCT) or a Pi Kappa Delta National Tournament and Convention?

The National Council is seeking bid from prospective tournament hosts. A full description of the requirements as well as guidelines for submitting a tournament bid are located on the PKD website. Briefly, prospective hosts need:

- 105 available competition rooms
- Two large rooms for tabulation
- A large centrally located space for ballot distribution and collection
- Large and centrally located spaces for judge and student lounges, extemp prep and topic draw
- On-campus food service during the tournament or food availability within 3 blocks of campus
- Evidence of success in hosting large tournaments

For more information about submitting a tournament bid, please contact David Bailey or Tomeka Robinson

Restaurants Near Tennessee State University:

Eat-In:

AVO Nashville (Vegan)	3 City Avenue	(615) 329-2377
Bombay Palace	2912 West End Avenue	(615) 321-6140
Calypso Vegetarian Café	3307 Charlotte Avenue	(615) 321-3878
Chick-Fil-A	Floyd-Payne Campus Center	(615) 963-5495
Ella Jean's Café	2116 Meharry Blvd.	(615) 321-2100
Flip Burger	4111 Charlotte Avenue	(615) 454-2917
Local Taco	4501 Murphy Road	(615) 891-3271
Kingdom Café	2610 Jefferson Street	(615) 678-7582
Marco Polo's	2721 Clarksville Pike	(615) 313-7713
Subway	2719 Jefferson Street	(615) 321-0612
Swrett's Restaurant	2725 Clifton Avenue	(615) 329-4418
Wendys	1045 28th Ave N	(615) 320-1836

Delivery:

Best Wok	2803 Clifton Avenue	(615) 341-0188
Castrillo's Pizza	3501 Park Avenue	(615) 678-4812
Express Pizza & Gyros	1734 Jefferson Street	(615) 235-0701
Pizza Hut	1908 W End Ave	(615) 320-9712
Royal Thai Restaurant	120 19th Ave N	(615) 321-6104
Seafood Sensation	2719 Jefferson Street	(615) 678-1069

Bite Squad Nashville: (Download for delivery from Nashville restaurants)

Grub Hub Nashville: (Download for delivery from Nashville restaurants)

Museums and Sights:

Andrew Jackson's Hermitage	(615) 889-2941
Belle Meade Plantation	(615) 356-0501
Cheekwood Art Museum	(615) 356-8000
Country Music Hall of Fame	(615) 416-2001
Grand Ole Opry	(615) 871-6779
Johnny Cash Museum	(615) 256-1777
The Parthenon	(615) 862-8431



PI KAPPA DELTA
The Art of Persuasion, Beautiful and Just

**President Letter for Key
Dr. Tomeka Robinson
Hofstra University**

Happy Beginning of the Forensics Season,

Welcome to another wonderful season! Your National Council has been very busy preparing a number of new initiatives for this coming season. First, we hope that everyone has had a chance to listen to our statement condemning the Unite the Right Rally in Charlottesville. The statement release was initiated by our student representatives and the entire council stands in unanimous agreement. In case you missed the release, here is the statement:

In response to recent events, Pi Kappa Delta formally and categorically condemns the actions taken by groups such as the KKK and other white supremacist organizations alike at the Unite the Right rally in Charlottesville. Their support for racism, anti-Semitism and pure hatred directly opposes our goal of creating a welcoming and inclusive community. We express our deepest condolences to those killed, injured, and impacted by the violence perpetrated during such events. Mindful of the importance of First Amendment freedoms and in light of welcoming a new competitive season, we remind our members of their ethical obligations to audience members and encourage members to refrain from disrespectful or derogatory speech. All members regardless of distinction are a valued part of Pi Kappa Delta community.

With our current political climate, it is important that we affirm and reaffirm our belief as members of Pi Kappa Delta in “the art of persuasion, beautiful and just.” We should always be mindful of the consequences of our words and actions.

This summer, the national council met in Ottawa, KS to visit our archives. Our wonderful archivist, Leslie Drake, has been hard at work uploading documents to make them available digitally for all of our membership. Please take a moment to see what is already there and reach out to her to thank her for her work. And if you ever find yourself in the Ottawa area, I encourage you to stop by and see some of the artifacts that cannot be uploaded digitally. Plus, council member, Ryan Louis, will provide coffee.

While at our meeting, we also started preparations for the NCT at Tennessee State University on March 14-17. Stay tuned for lots of updates from our new tournament director, Dan West, regarding some important changes to the tournament, including the use of digital ballots in both individual events and debate.

Lastly, the wooden keys and triangles that were on display at Boise State University are still available. Todd Holm, the creator, is still willing to offer these at discount for teams that are interested. While the list prices are the full price, at checkout they can enter the discount code TOMEKA and get 15% off their entire order.

Here is the Shopify address:

<https://holm-awards-woodwork.myshopify.com/collections/all>

Have a great beginning of the season and we hope to see many of you at our PKD Preconference at NCA, at our panels at NCA, and of course in Tennessee!

Tomeka



PI KAPPA DELTA

The Art of Persuasion, Beautiful and Just

Students of Pi Kappa Delta,

It is our honor to welcome you into the 2017-2018 Forensics season. During our term, we strive to create a stronger sense of community amongst PKD students. We heard your concerns at the previous student caucus held in Boise and, throughout the summer, we worked hard to act on the issues you voiced. Designated safe spaces for tournaments are in the foreseeable future and we are making progress in the effort to remove school affiliations from debate ballots. Lastly, we are strongly endorsing the right for competitors to leave emotionally triggering performances without penalty.

We are proud to be a part of an organization that actively works towards promoting inclusivity and sharing this powerful activity, and as your student reps we are searching for ways to improve. ***Your experiences, opinions, and ideas matter - so all students are encouraged to reach out to us and be heard.*** Help us be an advocate for you and your team — email us your questions, comments and suggestions at either: donovanharvey2@gmail.com or oliviapotter46@gmail.com. And, don't forget, we're competitors too. If you see us on the circuit don't hesitate to say hi and tell us how we're doing.

Lastly, let us know how you and your team celebrates "The art of persuasion, beautiful and just" through posing a photo with #PiKappaDelta in the caption. Share with us your volunteer initiatives, practice sessions, or your team showing off some PKD gear. You just might end up on our Facebook, Twitter or Instagram pages: @pikappadelta.

Sincerely,

Olivia Potter, Student At-Large Representative
Webster University

Donovan Harvey, Local Student Representative
Hofstra University,



Phillip Voight
Gustavus Adolphus College
Chief Operating Officer's Report

Pi Kappa Delta's fiscal year ended on August 1, 2016 and it was a good year. The tournament in Boise was well-attended and successful, and our investment portfolio grew at a rate of 8.5% year-to-date, 14.1% annually and 9.2% over a five year period. Although membership revenue remains an important component of our overall financial health, we are pleased that we have not had to increase the cost of individual memberships for more than fifteen years. Strong growth in both individual and chapter memberships, coupled with other revenues accrued as a result of support from the Arthur N. Rupe Foundation, have allowed Pi Kappa Delta to maintain its strong fiscal posture while also devoting record levels of spending to programming. (Key programming expenses include funding the PKD archives, funding the NCA Professional Development Conference and NCA Social, providing scholarly grants, and providing program assistance funding and individual prizes to undergraduates.) We have also kept a close eye on our costs and we continue to explore ways to provide the same services at a lower cost. The net result is that our total fund balances are in-line with our five year averages:

BMO Harris Savings:	\$7,302.74	FY 2015:	\$239,745.00
BMO Harris Checking:	\$12,426.15	FY 2014:	\$213,805.00
US Bank Checking:	\$53,777.93	FY 2013:	\$236,746.00
Minnesota Philanthropy Partners:	\$128,340.00	FY 2012:	\$186,530.00
		FY 2011:	\$187,518.00
		FY 2010:	\$149,788.00
FY 2016 Total:	\$201,836.82		
Average:	\$202,441.00		

Pi Kappa Delta's endowment funds are invested with Minnesota Philanthropy Partners. This relationship allows us to benefit from the expertise of a large financial management firm without the expenses associated with managing the endowment ourselves. Our long-term objective is to continue to grow the size of the endowment until it reaches a point where endowed funds can fully support the costs of publishing our journal, maintaining our archives, and running our national office. At our current rate of spending, this would require an endowment of approximately \$600,000.00 to \$750,000.00. Although this may seem like a very difficult objective to achieve, remember that we have increased the size of the endowment by over \$80,000.00 in just the past six years without making any changes to our programming expenditures.

Grant income, sponsorships and individual donations are important components of our long-term endowment strategy. The Arthur N. Rupe Foundation decided not to award us a grant to support Public Forum debate next year. In part, this may have been a reflection of our success in reaching the grant objectives — Public Forum debate was the largest division of debate that we offered in Boise. Despite the loss of this grant, however, we are pleased to announce that we have received a \$98,000.00 grant from the Charles Koch Institute to support free speech and tolerance on PKD campuses. That grant (described elsewhere in this issue) will also provide significant operational support to help Pi Kappa Delta during the next fiscal year.

As part of our ongoing strategic planning efforts, PKD is revising and updating its Fundraising and Development Plan. We are currently seeking sponsors for the banquet at the Hofstra University National Tournament and Convention. We are also examining the feasibility of a number of fundraising programs, including the *Amazon Smile* program and exploring better ways of engaging our nearly 100,000 alumni members. Please contact me if you would like to be involved in these efforts, if you know of an organization, business or individual that you believe we should approach as a potential sponsor; if you are aware of a source of grant funding that might be available; or if you would like to make an individual or planned gift to Pi Kappa Delta.

I am Sincerely,

Phillip A. Voight
Chief Operating Officer

PKD Chapter Dues and Memberships:

Have you renewed your chapter dues for 2017-18? Have all of your team-members joined Pi Kappa Delta? Last year, the National Council adjusted the fee schedule in an attempt to encourage members to pay their annual chapter dues and to enroll members during the Fall semester, rather than at the National Tournament. There were several reasons for this change:

- 1) Individual and chapter members receive access to members-only resources on the PKD website, including access to videotapes of Final Round performances and instructional materials.
- 2) Late renewal often created a cash-flow problem for the organization which required it to maintain larger than needed cash reserves (at low or no interest) to fund the organization until anticipated membership revenues materialized.
- 3) Late renewal made it difficult to assess the overall size of the organization, and thus complicated grant funding requests. This is a more serious problem that it may appear. When organizations asked for current membership data, PKD appeared far smaller than it actually was. Potential funders also wondered if PKD was really important to its members, given that few of them seemed to pay their dues on time.

For these reasons, incentives for early renewal were created for both individual members and chapters:

Individual Memberships:

\$35.00 (prior to February 21st)

\$50.00 (after February 21st):

Chapter Memberships:

\$75.00 (prior to November 1st)

\$100.00 (from November 2nd to February 21st)

\$125.00 (after February 21st)

Please join or renew online and thank you for your support of Pi Kappa Delta!

PKD Targeted Instructional Grant Application

3 grants available, \$1,000 per grant

GENERAL PURPOSE: The general purpose of Pi Kappa Delta Targeted Instructional Grants is to support forensics pedagogy and practice by distributing high quality materials on the PKD website free of charge. Each TIGA grant addresses a specific area of need identified by the National Council. The objective of each grant is to produce finished instructional or programmatic content that is worthy of broad distribution to members, chapters and other interested parties.

APPLICATION PROCESS: Applicants for all TIG grants should submit the following materials:

- 1) A cover letter that identifies the applicant's interest in the target area and highlights any relevant practical, scholarly or professional experiences that the grant review committee should consider. In addition, the letter should identify the applicant's key skills and aptitudes, focusing particularly on those characteristics that suggest a strong likelihood that the project will be satisfactorily completed within the timeline suggested in the project proposal.
- 2) A current Curriculum Vitae;
- 3) A professional writing sample and, if relevant, a sample of the applicant's previous scholarly, professional, instructional or multi-media work; and finally,
- 4) A project proposal that identifies key components of the project, establishes a project completion timeline, and specifies the date that approximately fifty percent of the materials identified in the proposal will be delivered to the National Council "in their final form."

INTERVIEWS: As part of the selection process, applicants should expect to be interviewed by the grant review committee and/or representatives of the National Council.

DISPERSEMENT OF THE GRANT: Because these grants are targeted in nature, and because the National Council seeks specific material as grant outcomes, successful grants will be distributed in three phases: One third of the grant will be dispersed immediately upon being selected as a grant recipient, one third will be dispersed approximately halfway through the completion of the project, and the final payment will be dispersed upon final delivery of the content.

TIG-1: Sample Performances with Copyright Permissions for: POI, PROSE, POETRY, DI, DUO

This targeted instructional grant is designed to produce a complete set of interpretive event samples that coaches and students can use to better understand the normative processes involved in competitive interp. For copyright reasons, each example must be accompanied by a signed document attesting to authorship of the work in question, and granting Pi Kappa Delta unlimited permission to show, display and distribute the work free of charge and without the payment of royalties to the author. Alternatively, the author can assign the work's actual copyright directly to Pi Kappa Delta. Samples should include the full, unexpurgated text of the work, a version of the text that identifies the edited portion that was selected for performance, as well as an uploaded version of a multi-media performance of the work either in practice or in competition.

TIG-2: Development of Programmatic Data Benchmarks and Tracking Measurers.

The purpose of this TIG is to develop a set of programmatic data benchmarks and an electronic tool that can be used to longitudinally track and measure the relative (and comparative) health of forensics programs. The tool should reflect an appreciation of the comprehensive mission of Pi Kappa Delta, and it should facilitate comparisons of different types of programs both among and within institutional designations (for example, facilitating both comparisons among Carnegie I research institutions, as well as comparisons between liberal arts institutions and Carnegie I institutions). Ideally, the finished set of data benchmarks should permit easy data entry on the part of survey participants, and will prove useful in situations where administrators or external founders are interested in determining how a particular program measures against an average program in its region or Carnegie designation. The National Council also hopes that the completion of this project will ultimately result in broad-based improvements in the financial capacity of intercollegiate forensics programs.

TIG-3: Development of Print and Multi-Media Public Forum Debate Instructional Materials.

This targeted instructional grant is designed to produce a complete set of materials for use in teaching Public Forum Debate. The materials should include: Guides to coaching and competing in public forum debate; a summary of public forum rules and procedures; an uploaded audio-visual demonstration of a public forum debate being performed (drawn from either practice or competition), along with a pdf file containing all of the materials referenced in the demonstration debate; and finally, a sample ballot from the debate.

All completed grant applications should be submitted to Phillip Voight, PKD Secretary/Treasurer, Gustavus Adolphus College, 800 West College Avenue, St. Peter, MN 56082 pvoight@gustavus.edu, (651) 492-8449.

National Council Announces Program Assistance Fund

Over the past several years, and largely as a result of the generous support of the Arthur N. Rupe Foundation, Pi Kappa Delta has had the opportunity to offer travel assistance to enable programs that are competing in Public Forum Debate to attend the National Comprehensive Tournament or the National Tournament and Convention. To be sure — these funds have been modest — rarely providing more than a fraction of the actual costs necessary to attend the tournament. Nonetheless, the relative success of these initiatives in enabling small, under-funded teams to attend the tournament has persuaded the National Council to expand the program and to regularize its funding. At the Summer National Council Meeting this past June, the Council authorized the creation of an \$8,000.00 “Program Assistance Fund,” to be exclusively dedicated to providing funding assistance to teams that wish to attend the NCT or the National Tournament and Convention.

How much total funding is available? \$8,000 is available for use at the National Comprehensive Tournament in Tennessee. Following the tournament, the National Council will evaluate the program and make a determination about the appropriate level of funding going forward.

If the funding is not coming from the Rupe foundation, where do the funds come from? As mentioned, previous funding has been provided by grants received from the Arthur N. Rupe Foundation. PKD and will continue to pursue grant-related funding from that source and others. Funds for the current program, however, are almost entirely derived from the proceeds of Pi Kappa Delta’s fledgling endowment with the Minnesota Community Foundation, and therefore do not require any increased membership fees, tournament entry fees or chapter dues. In effect, they enable the Council to use our investment income in a way that directly benefits membership and that supports the tournament.

Who are the expected beneficiaries? Any Pi Kappa Delta chapter in good standing may apply for program assistance funding. However, the grants were intended primarily for student-led programs, or for programs that experienced sudden losses in institutional budget support.

How can the funds be used? The funds may be applied toward tournament entry fees, tournament participation fees and hired judging fees. Total grants may be awarded of **up to half of the cost per school in each of these areas**. In other words, successful applicants will reduce the costs associated with the tournament entry by up to 50%.

Can the funds be used for hotel, airfare, food or other costs? No, these other costs proved too difficult for PKD to administer, and the size of the funds available was thought to be too modest to equitably distribute for general travel expenses. The National Council’s chief priority was providing funding that would help teams attend nationals without risking the loss of the funds. Because travel plans often change at the last minute and on short notice and because PKD would have no way to properly administrate travel arrangements, the risks of funds being wasted because plane tickets were not used or hotel rooms were not cancelled in time to get refunds was judged to be too high. Moreover, even if the funds were recoverable in these circumstances, it would be difficult to get them to teams that needed them on such short notice.

To apply for funding, please submit an application no later than 5:00 pm, February 21st, 2018

Program Assistance Fund Application

Please submit electronically no later than 5:00 pm, February 21st, 2018

Send completed application to: pvoight@gustavus.edu

School: _____

Chapter Sponsor: _____

Contact Information:

Phone: () _____ - _____ **E-Mail Address:** _____

School Physical Address:

Total number of participants entered _____

Is this program student-directed? (In other words, is a faculty member assigned to travel with and/or coach the team on a regular basis?) Y N

Has this program attended a previous PKD National Tournament? Y N

Is there anything else that the National Council should consider when evaluating this grant request? (attach separate sheet if necessary)

This chapter is applying for a grant in the amount of \$_____, a figure that represents up to half of the entire costs associated with tournament entry fees, hired judging fees and/or tournament participation fees.

Please attach a copy of the tournament entry form to support the grant funding request. In the event of changes to the entry, such as drops, the size of the grant may be reduced accordingly.

GRANT FUNDS MAY NOT BE USED TO PAY FOR DROP FEES. Drop fees will be assessed according to the schedule outlined in the tournament entry.

2017 PKD National Professional Development Conference

November 15th, 2017

DaVinci Conference Center Training Room
701 Commerce Street, Dallas, TX 75202

- 9:00 — 10:30 Session One: Reflecting on Our Discipline's Past to Build Our Future: The Importance of Training and Mentoring on the Development of Graduate Student Coaches.**
Chair: Kieth Cyril Bistodeau, Hamline University
Panelists: Amorette N. Hinderaker, Texas Christian University, Yaw Kyeremateng, Concordia University, Irvine, Seth A. Fendley, University of Southern Mississippi
Respondent: Timothy James Bill, University of Kentucky
- 10:30 — 12:00 Session Two: Choosing and Adding Debate Formats: An Analysis of What is Best for Students and Programs.**
Chair: Robert James Glen III, Owensboro Community and Technical College
Panelists: Jessica L. Furgerson, Western Kentucky University, Jackson B. Miller, Linfield College, Gary Deaton, Transylvania University, Jay Bourne, University of the Cumberlands, Timothy James Bill, University of Kentucky
Respondent: Spencer Waugh, Simpson College
- 12:00 — 1:30 Session Three: The Practice and Administration of Forensics: Hosting Comprehensive Tournaments And Restarting Programs.**
Co-chairs: Jessica L. Furgerson, Western Kentucky University & Nick J. Sciuillo, Illinois College
Panelists: Victoria A. Ledford, Marshall University, Timothy James Bill, University of Kentucky, Gina L. Jensen, Webster University, Scott L. Jensen, Webster University, Nicole Freeman, University of Central Missouri, Garret L. Castleberry, Oklahoma City University, Dena Counts, Abilene Christian University, Douglas Marshall, Southern University at New Orleans, Thomas McCloskey, University of Maryland
Respondents: Daniel West, Ohio University & Joshua Hamzehee, Louisiana State University
- 1:30 — 3:00 Session Four: Forensics and the Contemporary Political Climate: Civil Argument and Political Diversity in Forensics During the Trump Presidency.**
Co-Chairs: Daniel West, Ohio University & Christopher Outzen, Truman State University
Panelists: Tomeka Robinson, Hofstra University, Mark S. Hickman, West Chester University, Scott A. Millsap, Columbus State Community College, Phillip A. Voight, Gustavus Adolphus College, Scott L. Jensen, Webster University, Susan Millsap, Otterbein University, Arthi S. Chandrasekaran, Wayne State University, Nicholas M. Prephan, Wayne State University, Robert Bailey Layne, University of Utah, Paige Russell, Northern Illinois University, Victoria A. Ledford, Marshall University
Respondent: Christopher Outzen, Truman State University
- 3:00 — 4:30 Session Five: Debating in a Post-Factual World: How Do We Teach Debaters to Best Deal With Alternative Facts, Deception and Emotional Appeals?**
Chair: Kevin L. Bryant, University of Southern Mississippi
Panelists: Jacob Metz, Tennessee Technological University, Gary Deaton, Transylvania University, Patrick G. Richey, Middle Tennessee State University, Robert James Glenn III, Owensboro Community and Technological College, Marcelo Gonzales, Tennessee Technological University, Taylor Deaton, Transylvania University
- 4:30 — 5:00 Session Six: Special Preview of Theater of Public Policy Opportunity for PKD Schools**
Co-Chairs: Phillip A. Voight, Gustavus Adolphus College & Tane Danger, Theater of Public Policy

**PKD at the National Communication Association
November 16-19, 2017
Dallas, TX**

Wednesday, November 15th:

3rd Annual Pi Kappa Delta National Professional Development Conference
(See Opposite Page for Complete Program)
DaVinci Conference Center Training Room
701 Commerce Street, Dallas, TX 75202

Friday, November 17th:

Our Legacy and Relevance: A Conversation About POC Mentorship in Forensics
8:00a m to 9:15 am, Normandy A, Marriott 3rd Floor

Pi Kappa Delta Business Meeting
11:00 am to 12:15 pm, Normandy A, Marriott 3rd Floor

Pi Kappa Delta Social
6:00 pm to 8:00 pm, Karaoke Room, Draft Media Sports Lounge
400 N. Olive Street
Dallas Sheraton Hotel

Saturday, November 18th:

Paper Session — Performance in Debate: Challenges for the PKD Community
12:30 pm to 1:45 pm, Plaza C Ballroom, Marriott 3rd Floor

Application, Administration and Performance in Forensics:
Pi Kappa Delta Individual Paper Session
2:00 pm to 3:15 pm, Normandy A, Marriott 3rd Floor

Leveraging University Mission Statements: A Case Study Analyzing
Competitive Academic Team's Contributions Towards Advancing Mission Statements
Nicole Freeman, University of Central Missouri

Mental Health Stigma in Forensics: How Self-Labeling Requirements Create Barriers
to Participation and Opportunities for Advocacy
Rory Doehring, University of Missouri

We Voice Sing: Re-Appropriating the Myth of the American Dream
Crystal Lane Swift Ferguson, Mount San Antonio College



Tournament News

It is my privilege to serve as your PKD NCT Tournament Director this year! I've enjoyed being part of the tab staff for the last 20 years and am really looking forward to this new challenge. It is my pleasure to update you about some new features of the PKD NCT Tournament! First off, we will be using Tabroom.com for our tournament entry and management. Tabroom.com is integrated into your school and individual membership base which will streamline the registration process. This is what it will mean to you:

Chapter Dues must be paid before you can begin the registration process. For those of you that paid chapter dues in advance with your registration at the Convention in Boise, you are all set to go. If you did not pay last spring, or have not yet paid your chapter dues, you will need to take care of that **BEFORE** you can begin the registration process.

All students need to be members **BEFORE** you can enter them in the tournament. Please be sure that you have paid their membership fee **BEFORE YOU ENTER THE TOURNAMENT**. Membership fees and applications will not be accepted at tournament registration.

Tournament registration (on site) can be done electronically (from the airport, your hotel or van). You will have the option to pay with a credit card or by cash or check. Complete the registration online when you arrive in Nashville and when you get to campus, or early registration, you can skip the line and go right to Lisa to finalize your payment and pick up your receipt and packet!

PKD is going **PAPERLESS!** Keep reading...

Postings for IEs and Debate will be done online and accessible on your phone.

Parli Topic announcement will occur through a text blast. No need to walk from the announcement room to your competition room! Teams can find any place to hang out and await the topic announcement.

The Tabroom.com system automatically sends a text message to every student and judge 15 minutes before their round reminding them of their room and section information.

In the event of a room change, Tabroom.com **AUTOMATICALLY** sends text message to the judge and students in **ONLY THE SECTIONS** that have been relocated. No more looking through the change log!

Judges will complete and submit ballots online! PKD will be the first comprehensive national tournament to move to electronic balloting. I'll provide training videos in the next few months, but until then here is how that will work:

Each judge will receive a text notification of their round 15 minutes before it's start time.

When the judge gets to the competition room, they can access their ballot through their Tabroom.com account on their laptop, iPad, tablet or mobile device.

When they are ready to begin the round, the judge clicks on the big green "START ROUND" button. This notifies the tab room that the judge is in the room and that the round has started. Rounds that have not started within 5 minutes of start time will be checked by building monitors and the tab room can either track down the missing judge (by calling their cell phone) or can send a standby judge.

Standby judges will be notified by text if they are scheduled or released. No need to hang around by (or hide from) the ballot table staff.

At the end of the round the judge will rank the contestants or enter their decision and submit the ballot. **NOTE:** Judges are free to go back and complete their written comments until the end of each day. All rounds will have a "decision due" time. Judges who have not entered a round decision within 5 minutes of the due time will be notified by text and, if they fail to do so, the tab room will flip a coin to determine the outcome of a debate round or assign ranks randomly in a speech round.

After submitting the ballot, the judge can simply proceed to their next round. **NO NEED TO RETURN TO THE BALLOT TABLE. NO NEED TO CHECK THE BALLOT TABLE BEFORE TOPIC ANNOUNCEMENT.** Now you have time to see your students, visit the restroom, or stand around and breathe fresh air before the next round. We figure that this will save judges approximately 15 minutes of walking time each round.

Elimination rounds (with the exception of finals) in IEs and Debate will be announced through Tabroom.com. Additionally, all judges and competitors advancing to elimination rounds will receive text messages with their room and section, side/speaker position. No more hunting for your name on the postings!!

Judges who miss their rounds will be notified by text that they have been replaced and assessed a missed round fee. Thankfully, since they will have received a text 15 minutes before the round is scheduled to start, judges will have ample time to call the tab room to alert them of a situation that will keep them from meeting their obligations!

At the conclusion of awards. Coaches will receive an email with a link to their team's ballots. They will have to choice of how and when they want to release their ballots to their students.

I KNOW this is a lot to take in and I promise you I will provide training videos and I will answer all of your questions either by phone, email or in person at NCA. Judges can have the option of using paper ballots. However, considering on average, most judges judge 15 rounds at a PKD tournament, electronic ballot will save each judge approximately 4.5 HOURS of walking time over the course of the weekend – electronic balloting has the potential of making judging a little less daunting. I'm putting the finishing touches on the invitation and it will be available by November 1st. In the meantime, here are some quick reminders:

The PKD NCT is March 14-17, 2018 (Wednesday – Saturday) at Tennessee State University in Nashville, TN.

Registration will begin on Tuesday night.

There will be speech and debate competition each day.

Registration deadline is February 15, 2018 at MIDNIGHT. No entries will be accepted after this date.

The National Council set thresholds for IE elimination rounds. In IEs, we will go to semis at 50 entries. We will go to quarters at 100 entries. And, we will go to octas at 200 entries. Debate elimination round thresholds are determined by each format's governing documents and will be specified in the invitation.

Starting this year, the NCT will offer Consolation Events for those students who do not advance to Day 4 of competition. More information will be provided in the invitation.

The National Council decided that all schools **MUST COVER AT LEAST HALF THEIR ENTRIES** with judges. Please take this into consideration as you begin planning for the PKD NCT.

Our host, Prof. Sean Allen and his team, as well as the staff at Tennessee State are working hard to provide us with an outstanding venue for our amazing tournament.

If you are interested in being part of the tournament staff, or if you have questions, or if you just want to chat about nationals, please contact me by email (pkdnats@gmail.com), or by phone at 262-PKD-NATS (262-753-6287).

Dan West

PKD National Tournament Director

pkdnats@gmail.com

262-PKD-NATS

262-753-6287

Showcasing the Art of Persuasion, Beautiful and Just *and Funny*

An innovative group is working to get more students at colleges and university students across the country to say “Yes, and...” to speech and debate programs.



The Theater of Public Policy on stage for a show with Congressman Keith Ellison.

The Theater of Public Policy (T2P2 for short) is an improv comedy troupe that brings hard, “thinky” topics and debates to life on stage. Their unique shows mix thoughtful conversations or debates with experts and unscripted comedy improv. National media have called it, “What would happen if C-SPAN was suddenly invaded by SNL,” and “The Millennial answer Jon Stewart and Stephen Colbert.”

“It’s a way to attract new audiences to forums,” explained co-founder Tane Danger. “Getting students to a 90 minute debate on state tax policy might be a tough sell, but if an improv show is part of it, a whole new crop of folks turn out.”

This academic year, T2P2 is looking to bring its troupe to campuses across the country for one or more of their unique program offerings.

Flagship Show on Challenging Topics

The Theater of Public Policy’s Flagship/interview show can facilitate more successful public talks on controversial or challenging subjects. These shows start with an on-stage interview with an expert or panel on a particular issue. Then the cast of T2P2 re-imagines the topic through unscripted comedy.

The interview element and the promise of improvised interpretation is an unconventional format that opens audiences up to hearing from people with whom they might otherwise just ignore or be hostile towards. T2P2 has used this format to facilitate respectful and thought-provoking talks by speakers on issues like 2nd Amendment rights for people of color, free-market energy and education policies, and challenges to modern feminism.

Improv Café Shows for Student/Faculty Dialogue

T2P2 has created a show format they call the “Improv Café,” in which an audience—students and faculty—are arranged around tables. The show host asks each table to talk amongst themselves around several pre-planned prompts.



“What is most important to you about your education?”

“What is one thing you wish were different about the school?” etc.

As the groups discuss these questions, the cast of T2P2 fan out and embed themselves at different tables where they absorb and collect stories. Then

the cast of T2P2 take the stage, bringing all the stories and anecdotes they have heard with them. Those stories are the inspiration for T2P2’s improv performance. The performance reflects back the real thoughts/ideas of other individuals that might otherwise be lost or ignored making for a highly democratic and entertaining community conversation.

Student Debate Shows

The Theater of Public Policy is adept at taking varied and sometime opposing points of view and bringing them to life on stage. For college campuses with an active speech and debate program, T2P2 hosts events where students formally debate a proposed motion. What’s different is that each team have a small cast of improvisers allied with them.

After the formal verbal debate, the cast of improvisers illustrate the ideas presented and argued through unscripted theater. The promise of improv brings new audiences to a formal debate.



Speech and Debate Team Workshops

"The workshop was incredibly fun and educational. It brought people out of their shells, and forced them to take into account the people around them. Our students broke out of their comfort zones and reached new places in their personal growth " - Hamline University

Improv trains you to think on your feet, grapple with loads of incoming information, and communicate complex ideas to an audience. T2P2 has led workshops previously for college speech and debate teams and intends to bring it to more broadly to colleges this year.

These workshops lead speech and debate students through exercises that T2P2 cast use in rehearsals to hone their skills as improvisers. After each exercise, a T2P2 trainer deconstructs the skills to show how they are valuable for those practicing speech and debate.

For more information about The Theater of Public Policy and bringing them to your campus for a show, workshop, or both, contact co-founder Tane Danger at Tane@t2p2.net or by phone (612) 304-8153.

Thanks to our new Sponsor — The Charles Koch Institute

Pi Kappa Delta is pleased to have received a \$98,000 grant for the 2017-18 academic year. The grant's focus is to promote tolerance of differing viewpoints, and its proceeds will be used to support the Theater of Public Policy (T2P2) activities described on the previous pages.

The logo for the Charles Koch Institute, featuring the words "CHARLES", "KOCH", and "INSTITUTE" stacked vertically in a blue, sans-serif font. The text is enclosed in a blue rectangular border that is open on the right side.

**CHARLES
KOCH
INSTITUTE**

CKI's Freedom of Expression Mission Statement:

Freedom of speech and expression are essential for individual flourishing and a truly free society. They allow us to explore, learn, and innovate in ways that challenge both ourselves and the status quo. Free speech and academic freedom are at the core of a thriving marketplace of ideas and are essential to lasting freedom from oppression.

The Charles Koch Institute is a 501(c)(3) organization and does not fund or endorse political candidates.

Are you interested in hosting a Theater of Public Policy Event on your campus?

Please contact Phillip Voight at pvoight@gustavus.edu to schedule a T2P2 visit to your campus. Bookings are available in both the Fall and Spring semesters. Don't worry if you don't have a clearly formed topic idea in mind, Pi Kappa Delta and T2P2 will work with you to determine a topic that meets your needs. We will also help book local and national experts that can serve as panelists.

What do you need to provide? Travel and most other costs associated with the visit will be covered by the grant. Local hosts need to provide hotel rooms for the T2P2 cast (usually for one night), book the performance space, publicize the event on campus, and assist PKD with collecting audience reactions to the performance.

The following is presented for informational purposes only and should not be construed as an offer of legal advice

DACA REPEAL FAQ

On September 5th 2017 Attorney General Jeff Sessions announced plans to end The Deferred Action of Childhood Arrivals (DACA). This Q & A is provided as a guide for what students and coaches can/should do, if they are faced with troubling scenarios while travelling or on their campuses.

FOR STUDENTS

*What is the deadline to apply for the 2 year extension?
Safely, September 30th, 2017

*What are the requirements to extend?
A copy of the last issued Employment Authorization Card the DACA recipient has, a copy of their last approval notice for DACA, and evidence of the continuous residence since they last received DACA (i.e. utility bill or lease)

*Does the extension protect students while traveling through airports and across state lines?
Yes unless they have been convicted or arrested for a significant misdemeanor or a serious crime, their current DACA status will not protect them from apprehension when in contact with any federal official who works for DHS.

FOR COACHES

*What should a coach do if a student is detained?
Alert the family and the University to situation and consult with an immigration attorney. The American Immigration Lawyers Association (AILA) can help you find a qualified attorney.

*Are there ways to reach out to assist the student (contact the university, contact lawyers, parents, etc?)
Yes, reach out to local Immigration Law Practitioners and encourage your Administrators to recruit an attorney trained in immigration law to assist international students currently protected under DACA.

Parents should be invited to disclose the status of their children in confidence and be allowed to create an emergency plan—where they can authorize a power of attorney for a member of staff they trust to make important decisions for their child in the event that they are unable to speak on their child's behalf because of their own immigration status and fear of apprehension by authorities.

Coaches should consider hosting a DACA renewal fair with the volunteer support of their teams and the cooperation of local immigration attorneys to help maximize the most number of DACA renewals possible before the end of the month.

*Should we stay with the student?
You will not be allowed to stay with the student, do as much as you can to get the student's contact information for their family and to see if DHS can give you any answers regarding where the student could be sent once they are apprehended.

The Pi Kappa Delta National Council is committed to assisting the ENTIRE forensics community. Please contact the National Council if you have additional questions and concerns. ALL students who participate in forensics should know that we are actively working to ensure the safety of our competitors and coaches. As such, these answers were provided to the PKD National Council by an immigration attorney who has pledged FREE legal consultations for any students and coaches.



PI KAPPA DELTA
The Art of Persuasion, Beautiful and Just

**Scott Jensen
Webster University
Editor's Report**

The Forensic of Pi Kappa Delta invites authors to submit manuscripts related to scholarship, pedagogy, research and administration in competitive and non-competitive speech and debate activities. *The Forensic* welcomes submissions from forensic coaches, communication/rhetoric scholars, and students (undergraduate and graduate). The Editor and Editorial Board invite scholarly discussion of making competitive individual events and debate powerful tools for teaching essential citizenship practices, including clear and ethical communication. Topics of particular interest to the Editor and Editorial Board include, but are not limited to: ways to increase diversity in forensics, argumentation and advocacy pedagogy, integrations of forensics and communication/performance theories and perspectives, and transfer as it relates to forensics (e.g., transfer among individual events, debate, and interpretation; transfer between competition and the classroom, and vice versa; transfer between forensics and careers). The journal seeks submissions reflecting perspectives from all current debate and individual event forms, along with non-traditional competitive events, as well as research pertaining to competitive contexts. The journal welcomes explorations of non-competitive speech and debate activities, including classroom projects, interdisciplinary efforts, and civic programs. *The Forensic* also invites submissions to be considered for the "Teaching and Coaching Resources" section of each issue. Authors are encouraged to submit lesson plans and materials that are used as instructional or program management materials. Each resource should include (1) a rationale for its use, including outcomes, (2) a description of its content and instructions for implementation, and (3) considerations and implications related to its use. *The Forensic* may also publish reviews of books, activities, and other educational materials. Potential authors should contact the Editor regarding the choice of material for review. All submitted works must be original, unpublished, and not under review by other publishers. Any research involving human subjects must have the approval of the author's institutional review board. Submissions should conform to APA guidelines (latest edition). E-mail submissions to the editor should be in Word format with no specialized internal formatting. Manuscripts should not exceed 25 double-spaced typed pages, exclusive of tables and references. The title page should include the title, author(s), correspondence address, e-mail address and telephone number of the author(s). The second page should include an abstract of between 75 and 100 words. The text of the manuscript (including its title) should begin on the next page, with no reference to the author, and with the remaining pages numbered consecutively. Avoid self-identification in the text of the manuscript. Notes and references should be typed and double-spaced on the pages following the text of the manuscript. Tables should be clearly marked regarding their placement in the manuscript.

SEND MANUSCRIPTS TO: Scott Jensen at jensensc@webster.edu, or School of Communications, Webster University, 470 East Lockwood Ave, St. Louis, MO 63119 **Do not fax submissions.** Authors should have an editorial decision within three months.

REVIEW EDITORS:

David C. Bailey, Southwest Baptist Univ.	Michael Bartanen, Pacific Lutheran Univ.
Garret Castleberry – Oklahoma City Univ.	Josh Compton – Dartmouth College
Kristopher Copeland – North Lake College	Jessica Furgerson – Western Kentucky Univ.
Mark S. Hickman - West Chester Univ.	Edward A. Hinck, Central Michigan Univ.
Amorette Hinderaker, Texas Christian Univ.	Gina Jensen – Webster Univ.
Jack E. Rogers – University of Central Missouri	Don Swanson, Monmouth Univ
Crystal Lane Swift Ferguson - Mt. San Antonio College & California State University-Northridge	
Scott Thomson - Ithaca College	Phillip A. Voight - Gustavus Adolphus College

THE FORENSIC OF PI KAPPA DELTA (ISSN:0015-735X) is published twice yearly, Winter and Summer, by Pi Kappa Delta Fraternal Society. Subscription price is part of membership dues. For alumni and non-members the rate is \$20.00 for 1 year, \$40.00 for 2 years, and \$60.00 for 3 years. Second class postage is paid at West Des Moines, IA. Postmaster and subscribers: Please send all address change requests to: PKD, 401 Railroad Place, West Des Moines, IA 50265-4730. **THE FORENSIC** is also available on 16 mm microfilm, 35 mm microfilm, or 100 mm microfilm from University Microfilms International, 300 North Zeeb Rd, Ann Arbor, MI 48106.

Ryan Louis
Ottawa University
Professional Development Report

In my new role as coordinator of professional development, I am eager to facilitate programs that enrich the experiences of our membership. We will continue to offer panels at our tournaments—discussions, workshops, trainings. Because these should reflect the needs and desires of those attending, if there's any topic or concern you would like addressed in this format, please let me know!

I continue to spearhead PKD's *Persuasion Works* initiative. At the NCT this year, we are excited to bring back *Pitch it to Pi Kappa Delta*. This event is entirely online and will be open to students, faculty, campus groups or anyone who may want funding for local, regional or national projects. It is not an event for sweepstakes; rather, the Council will invest in actual projects! Two years ago we sponsored two proposals: "PKD for PKD" (polycystic kidney disorder) submitted by Colorado Christian University and a Congressional debate at the University of Southern Mississippi. Please see the NCT invitation for more details.

As the Council's liaison to the national archives, I am planning initiatives and events to help make our history accessible to all members. We will have more information soon about an opening gala and opportunities to view historical artifacts in person and online. It is ever humbling to walk through the halls of Ottawa and see PKD wherever I look. I am nerding out—I hope you, too, will nerd with me soon.

All the best.

See you at NCA!

Ryan Louis
Ottawa University

**Would you like to serve as a reviewer for next year's NCA
panel and paper submissions?**

Pi Kappa Delta submissions to NCA are evaluated according to a blind peer-review process and we need your help! Being a reviewer is a great way to get involved in Pi Kappa Delta, and your service to the organization is greatly appreciated. Reviewers are asked to evaluate PKD paper, panel and discussion forum submissions and to rank order their choices. In addition, reviewers are asked to make brief comments to those who submitted proposals that were not selected for presentation at the convention. The ideal reviewer is someone who is detail oriented and exercises good time management skills. For more information, or to submit your name for consideration, please contact PKD Past-President David Bailey or President Tomeka Robinson.

Pi Kappa Delta National Tournament Entries Over Time

If you think that the PKD National Tournament seems larger over the past several years than it has been in the past you are correct — the tournament has grown dramatically. In fact, when the experimental events are included, the total individual events entry size has almost quadrupled since the year 2,000 — from 553 total entered slots to 1976. Debate entries have only been tracked since last year, but the chart below lists the entries in individual events for the past sixteen years:

Event:	ADS	CA	DI	DUO	EXT	IMP	INF	PER	POE	POI	PRO	INT	Total:
2000	31	25	46	24	64	94	65	58	52	30	64		553
2001	60	41	82	61	96	141	85	102	98	67	126		959
2002	31	23	47	37	55	84	42	36	39	39	69		502
2003	46	35	62	55	80	121	72	74	77	55	102		779
2004	9	6	29	35	39	74	41	32	19	29	69		382
2005	52	35	87	48	84	126	68	87	96	78	131		892
2006	25	19	49	30	70	103	41	44	59	44	78		562
2007	45	43	86	75	105	152	82	82	79	69	125		943
2008	26	26	54	38	58	102	49	55	50	29			487
2009	78	56	92	81	115	182	85	82	110	68	148		1097
2010	85	58	105	71	109	208	87	99	91	71	139		1123
2011	74	52	91	60	137	189	86	91	94	88	156		1095
2012	79	58	129	75	126	189	82	83	112	98	156		1187
2013	93	63	125	81	149	208	109	107	130	112	153		1330
2014	85	68	126	83	196	244	127	117	129	92	168		1435
2015	100	65	116	73	176	240	103	107	109	101	162	139	1676
2016	96	81	153	83	210	285	134	136	130	101	173	174	1756
2017	78	48	101	53	191	215	108	113	107	74	140	173	1401

Debate and Experimental Event Entries:

	Debate Totals:	Other and/or Experimental Event Totals:
2015	501	278
2016	366	222
2017	418	257



Do You Have Items for The PKD Archives?

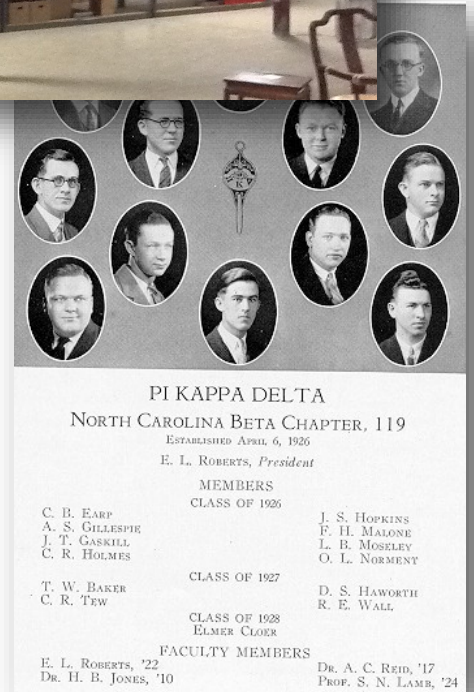
The Pi Kappa Delta Archives at Ottawa University is now open for business. An archivist has been hired and many materials have already been relocated to the archives. Over the next several years, the materials in the archives will be categorized, indexed and made available when possible. Chapters are encouraged to send historically significant materials to the archives. We interviewed Ryan Louis, who spearheaded the project:

Question: Ryan, What sort of materials is the archivist looking for?

“Schools can donate anything that they think has relevance to the history of Pi Kappa Delta or forensics, in general. Sometimes artifacts and documents are just hanging around, gathering dust. Our hope is to cast a light on these pieces of our history: to catalogue and place in an archive that will be available to everyone both in-person and digitally. When I first started with this project, I realized how many random trophies, framed photos and PKD-themed artifacts (I have a paddle on my wall!) I had in my possession. These items, passed down by other directors of forensics over the years didn’t really have a home. They lived in boxes, some were on display. But I knew that it only took one person—a student, future directors—to mistreat it and it would be gone forever. The presence of a PKD archive presents an opportunity to vouchsafe our collected memories.”

Question: How is the archives set-up and how would researchers go about using it?

“Right now we are in the early stages of archiving. Most of our time is being spent cataloguing and protecting. About 150 items (and their ample meta-data) are available to see online. As soon as we have gotten more of the details secured, the digital archives will be made available through our website (Ottawa.edu). When more is catalogued, we will also have an archive room available for campus visitors to examine pieces of the collection. We will also have curated PKD displays on rotation.”



Unusual items discovered in the Archives:

- Original correspondence between founders
- Menus from early tournament banquets
- Debates about criteria for membership
- Programs from early conventions
- Tournament trophies





Pi Kappa Delta
4021 Railroad Place
West Des Moines, IA
50265
(920) 748-7533

www.pikappadelta.com

PKDNationalOffice@gmail.com

2017-2019 Pi Kappa Delta National Council:

Joel Anguiano, Province Coordinator
Wiley College
5905 Flounder Drive
El Paso, TX 79924
janquiano@wileyc.edu

David Bailey, Past President
Southwest Baptist University
765 E. Parkview
Bolivar, MO 65613
dbailey@sbu.edu

Jessica Furgerson, Charters & Standards
Western Kentucky University
1906 College Heights Blvd., GCC 215
Bowling Green, OH 42101
Jessica.Furgerson@wku.edu

Donovan Harvey, Student Representative
360 Hofstra University
Vander Pool Hall, #1216
Hempstead, NY 11551
dharvey1@pride.hofstra.edu

Scott L. Jensen, Editor
School of Communication
Webster University
470 E. Lockwood
St. Louis, MO 63119
jensensc@webster.edu

Christopher Leland, President-Elect
Azusa Pacific University
901 E. Alosta Avenue
Azusa, CA 91702
Cleland@apu.edu

Ryan Louis, Professional Development
Ottawa University
1710 S. Chestnut Street
Ottawa, KS 66067
Ryan.Louis@ottawa.edu

Susan Millsap, Historian
Otterbein University
Department of Communication Studies
Westerville, OH 43081
smillsap@otterbein.edu

Olivia Potter, Student Representative
Webster University
1977 Raintree Trail
Collinsville, IL 62234
oliviapotter46@gmail.com

Tomeka Robinson, President
Hofstra University
422 New Academic Building
160 Hofstra University
Hempstead, NY 11549
tomeka.robinson@hofstra.edu

Phillip Voight, Chief Operating Officer
Gustavus Adolphus College
800 West College Ave
St. Peter, MN 56082
pvoight@gustavus.edu

The Key Issue 12 Fall 2016



Please Deliver to Speech and Debate Coach:

**Don't forget to attend the PKD Reception at NCA:
6:00 — 8:00 pm, Draft Media Sports Lounge, Sheraton Hotel
Karaoke Room**