

# ROSTRUM

VOLUME 71

NUMBER 10

JUNE 1997



*Minnesota Coaches (and Snoopy)  
Welcome NFL National Qualifiers*



# 1997 Topic: Renewable Energy Affirmative Cases Book

A new product for a new resolution

## AFFIRMATIVE ANSWER BLOCKS TO:

1. GENERIC DISADVANTAGES of Economic Growth, Environmental Ethic. Population Growth/Malthus, Costs/Sectoral depression, Business Confidence, Hegemony, Power Transmission Lines, Feminism North vs. South, Elites, Unilateral action.
2. GENERIC COUNTERPLANS of International action, Regional Interstate Compacts, Study, NGOs, Socialism, Population reduction, Bioregionalism.
3. KRITIKS of Statism, Environment, Moralism, Anthropocentrism.
4. GENERIC TOPICALITY Established, Policy, Substantially, effects.
5. GENERIC JUSTIFICATION answers to: Federal government, Government, Policy, Increase...use, In the United States.

**EIGHT FULLY WRITTEN AFFIRMATIVE CASES.** On the final consideration lists are cases on Fuel Cells, teathered satellites, solar energy, effluent fees, Taxes, hot rock geothermal, water engines, nanotechnology, high yield energy crop production, Ecoracism, and three more.

A GREAT teaching and coaching aid. It let's you and your debaters practice against other cases. It gives your novices a choice of great cases to use. The extensions serve as both models to help students learn how its done, and as in-round tools to help with debates. 250 plus pages, a wonderful diversity of cases, and so many extension blocks it boggles the mind.

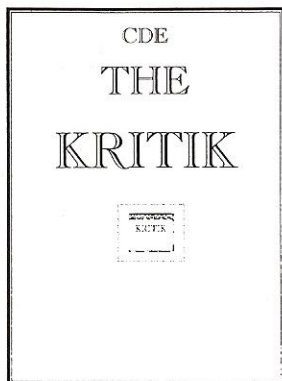
**Complete.**

**\$44 Available June 30, 1997**

## POPULATION GROWTH: THE BOOK

Malthus related attacks and cases are abundant at national level debate tournaments. Now, at last, here's the book with the blocks and RECENT evidence to help you win this issue.

The book includes an affirmative case and extensions based on this issue. Also included are several population disadvantage shells. And you get extensions on: time-frame, uniqueness, casual links, internal links, multiple huge impacts, and threshold/brink. Researchers: William Bennett and staff. Approximately 80 pp. \$28.00 for one copy, \$17.00 each for 4 or more.



## KRITIK

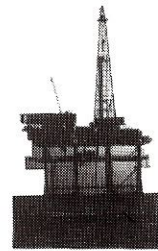
The KRITIK book offers you the tools to achieve two goals: run a kritik on the negative, or answer and defeat a kritik when you or your teams are on the affirmative. Included are:

- Ten negative kritiks. Shells and extension blocks
- 80 affirmative response blocks and extensions
- William Bennett, Frank Irizarry, and other theory articles
- Includes statism, feminism, nuclearism, language, environment and anthropocentrism, normativity, legal studies, Heidegger, Foucault, postmodernism, deconstruction, causality, epistemology, meta-physical, rhetoric, and the kritik of reason.

**More Complete**

**Available Now. \$39, Four or more \$29 each.**

## THE CDE AFFIRMATIVE CASES BOOK



## RENEWABLE ENERGY

W. Bennett & staff

1997

"Has affirmative answers to generic attacks better than I could find anywhere else" G. Streach, Kansas  
"Every year we find affirmative cases that we love in the CDE Affirmative Book." Harry Johnson, Valley H.S.

## The Crucial Complete Tool

"This is an amazing work of analysis and logic. It contains hundreds of blocks. The evidence is from legal, argumentation, logic, philosophy and even literary sources. The coverage and quality has this book bordering on being a masterpiece."

YOU receive:

1. Over 300 theory blocks
2. Major sections on  
TOPICALITY (110 blocks)  
COUNTERPLANS  
(68 blocks)  
DISADVANTAGES  
(18 blocks)  
JUSTIFICATION  
(21 blocks)
3. Affirmative and Negative blocks on presumption, inherency, significance, voting issues, paradigms, fiat, incrementatism, hypo-testing and more.
4. These blocks can be used on ANY topic.

## THE REALLY BIG THEORY BLOCK BOOK



**NEW SECOND EDITION**

**\$45.00**

Researched and written over 14 years by William H. Bennett, the man recognized as the intellectual leader of American high school debate.

**ORDER TODAY**

CDE Nat'l Institute  
W. Bennett  
Chairman



## RENEWABLE ENERGY Vol. 1

**COMPLETE. EACH BOOK HAS OVER 200 DIFFERENT NEGATIVE BLOCKS** and the case specific blocks will ALL be on next year's specific topic. Rated the best handbooks published in both Texas and National camp comparisons.

## ORDER TODAY

CDE makes only ONE printing. When the books are sold no more are available. Our handbooks have sold out for the last eight years, don't wait too long to buy yours.

Cost is \$25 for each Volume, \$69 for the set. Postage is prepaid if you pay in advance. It is added to your bill if you use a purchase order. Volumes are unbound for easy filling, ad \$5 each if you wish bound copies.

**Mail Today**

### TESTIMONIALS

"Unique evidence and arguments unavailable elsewhere." J. Prager, Calif.  
"I wouldn't go a year without CDE." V. Zabel, Deer Creek  
"So much more complete than all the other handbooks that I don't see how they stay in business." J. Dean, Texas

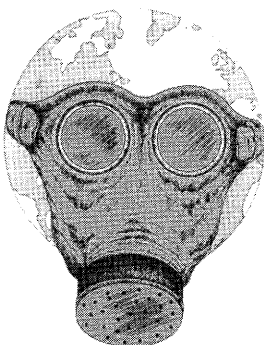
## EXCLUSIVE Features NEGATIVE BLOCKS ON:

1. GENERIC DISADVANTAGES
  - Economic Growth
  - Environmental Ethic
  - Population Growth/Malthus
  - Costs /Sectoral depression
  - Business Confidence
  - Hegemony
  - Power Transmission Lines
  - Feminism
  - North vs. South
  - Elites
  - Unilateral Action
2. GENERIC COUNTERPLANS
  - International action
  - Regional Interstate Compacts
  - Study
  - NGOs
  - Socialism
3. KRITIKS
  - Population reduction
  - Bioregionalism
  - Statism
  - Environment
  - Moralism
  - Anthroporentism
4. GENERIC TOPICALITY
  - The
  - Establish
  - Policy
  - Substantially
  - A
  - Effects
5. GENERIC JUSTIFICATION
  - Federal government
  - Government
  - A
  - Policy
  - Increase....use
  - In the United States
6. WON'T RUN OUT OF FOSSIL FUELS
7. CASE SPECIFIC NEGATIVE ATTACKS will be drawn from:
  - Fuel cells
  - hydrogen
  - Wind/Airfoils
  - Solar thermal, solar furnaces,
  - heliostats, solar cells, solar
  - collectors, photovoltaic
  - cells, passive
  - Solar satellites
  - hydroelectric
  - geothermal
  - anemoelectric
  - fusion and fission
  - herbaceus

# CDE DEBATE HANDBOOKS

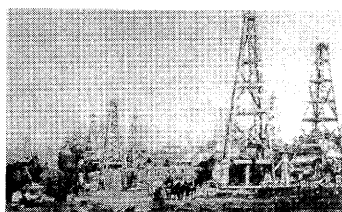
tidal power  
ocean thermal gradients  
tax incentives  
electric cars  
steam engine cars  
steam engine with passive solar  
high-yield energy crop production  
heat pipes  
methane from bacteria  
Garbage, waste energy, recycling  
terraforming  
generators and alternators  
reformulated gasoline  
air pollution  
water pollution  
global warming, greenhouse effect  
transformers  
DC devices

CDE Nat'l Institute  
W. Bennett  
Chairman



## RENEWABLE ENERGY Vol. 2

CDE Nat'l Institute  
W. Bennett  
Chairman



## RENEWABLE ENERGY Vol. 3



Mail to: **CDE**, P.O. Box Z, Taos, N.M. 87571  
(505) 751-0514

Name \_\_\_\_\_

Mailing Address \_\_\_\_\_

- ☐ Affirmative Cases Book ..... \$44
- ☐ Population Growth: The Book ..... \$28  
(4 or more copies - \$17 each)
- ☐ Kritik ..... \$39  
(4 or more copies - \$29 each)
- ☐ The Really Big Theory Block Book ..... \$45
- ☐ Debate Handbooks, 3 vols ..... \$69

THE BEST DEBATE RESOURCES FOR 1997-98

# Reducing Fossil Fuel Consumption

An Energy  
Program for the  
United States

A Critical Analysis of the  
U.S. Role in Establishing  
a Program to Increase  
Renewable Energy Use

United States  
Policy on  
Renewable  
Energy Use

An Overview of the Issues  
Related to Increasing

The Complete Resource Handbook

Increasing  
Renewable Energy  
Use in the United  
States

"How can the United States  
best reduce its fossil fuel  
consumption?"

Lynn Goodnight and Nathan Smith

## NTC'S "BIG 3" DEBATE TOPIC BOOKS

### 1. Increasing Renewable Energy Use in the U.S.

*The Complete Resource Handbook*

Analyzes the problems, outlines the issues, and offers supporting evidence for this year's topic. Also provides names and addresses of organizations publishing relevant material. More than 1,500 resources.

Softbound, #EL5397-9.....\$21.95

### 2. U.S. Policy on Renewable Energy Use

*An Overview of the Issues Relating to Increasing  
Renewable Energy Use in the United States*

Everything debaters need to grasp this year's topic. Includes empirical findings, related issues, ramifications, alternate solutions, more.

Softbound, #EL5398-7.....\$19.95

### 3. An Energy Program for the United States

*A Critical Analysis of the U.S. Role in Establishing a  
Program to Increase Renewable Energy Use*

This collection of critical essays and arguments is written by recognized experts. Many of the selections have appeared in specialized journals and other scholarly publications generally not available in libraries used by high school debaters.

Softbound, #EL5399-5.....\$19.95

**ORDER TODAY!  
CALL 1-800-323-4900**



# National Textbook Company

a division of NTC/Contemporary Publishing Company

4255 West Touhy Avenue • Lincolnwood, IL 60646-1975 • 1-800-323-4900 or 1-847-679-5500 • FAX: 1-847-679-2494 • E-mail: NTC PUB2@AOL.COM



MR. L.D. NAEGELIN, PRESIDENT  
NORTHEAST IND. SCHOOL DISTRICT  
FINE ARTS, 8961 TESORO DRIVE  
SAN ANTONIO, TEXAS 78217  
PHONE: 210-804-7142  
FAX: 210-804-7146

MR. FRANK SFERRA  
MULLEN HIGH SCHOOL  
3601 S. LOWELL BLVD.  
DENVER, CO 80236  
PHONE: 303-761-1764  
FAX: 303-761-0502

MR. DONUS D. ROBERTS  
WATERTOWN HIGH SCHOOL  
200 - 9TH STREET N.E.  
WATERTOWN, SD 57201  
PHONE: 605-882-6316  
FAX: 605-882-6327

MRS. GLENDA FERGUSON  
HERITAGE HALL HIGH SCHOOL  
1401 N. W. 115  
OKLAHOMA CITY, OK 73114  
PHONE: 405-749-3033  
FAX: 405-751-7372



MR. BILLY TATE, VICE-PRESIDENT  
MONTGOMERY BELL ACADEMY  
4001 HARDING  
NASHVILLE, TN 37205  
PHONE SAME AS FAX  
615-269-3959

BRO. RENE STERNER, FSC  
LA SALLE COLLEGE HIGH SCHOOL  
8605 CHELTENHAM AVE.  
WYNDMOOR, PA 19038  
PHONE: 215-233-2911  
FAX: 215-233-1418

MR. DON CRABTREE  
PARK HILL HIGH SCHOOL  
7701 N.W. BARRY ROAD  
KANSAS CITY, MO 64153  
PHONE: 816-741-4070  
FAX: 816-741-8739

MR. TED BELCH  
GLENBROOK NORTH HIGH SCHOOL  
2300 SHERMER ROAD  
NORTHBROOK, IL 60062  
PHONE: 847-272-6400  
FAX: 847-509-2676

MR. HAROLD KELLER  
DAVENPORT-WEST HIGH SCHOOL  
3505 W. LOCUST STREET  
DAVENPORT, IA 52804  
PHONE: 319-386-5500 EXT. 357  
FAX: 319-386-5508

## THE ROSTRUM

Official Publication of the National Forensic League  
(USPS 471-180) (ISSN 1073-5526)

James M. Copeland  
Editor and Publisher  
P.O. Box 38  
Ripon, Wisconsin 54971  
(414) 748-6206

The Rostrum (471-180) is published monthly, except July and August each school year by the National Forensic League, 125 Watson St., Ripon, Wisconsin 54971. Second-class postage paid at Ripon, Wisconsin 54971. POSTMASTER: send address changes to THE Rostrum, P.O. Box 38, Ripon, Wisconsin 54971.

### SUBSCRIPTION PRICES

Individuals: \$10 one year; \$15 two years. Member Schools \$5.00 each additional sub.

On the Cover: Star of the North Nationals Committee with himself at Knott's Camp Snoopy.

In September: National Tournament Results.

## WHY TWO EXTEMP PREP ROOMS AT NATIONALS

Plan on having two prep rooms for extemp at Nationals in Minnesota and probably at future national tournaments.

Why? Two reasons:

1) As the number of extemp contestants reaches 400 and the extemp materials proliferate (one team claims to have 13 boxes—6 domestic and 7 foreign), all students will not fit in a high school gym (especially unairconditioned)! A large college fieldhouse might work, but a room of that kind is not available at most National venues. Hence we use two gyms.

2) As the total number of students who qualify for the tournament increases (we now need 172 contest rooms each hour), the tournament must be held in two buildings—sometimes several miles apart. In order to preserve double qualification, each contest event is split into two equal parts, half in each building. By scheduling this way a student doubled (OO/USX or Debate/FX) can have both events in the same building! (It would be difficult or impossible if a doubled student had one event in one building and the other event in another building some distance away.)

In brief, the NFL Nationals will use a two site system and each building will contain all the events. Since extemp, both USX and FX, will be in each building, there must be a prep room in each building.

How are students assigned to buildings (prep rooms)?

At random, by computer.

Why?

The Executive Council of NFL has voted unanimously that students who qualify for nationals be assigned by computer for the prelim rounds. The computer program will guarantee that double qualified students will be placed at the

same site for both events. No students or squads will be hand assigned to prevent loose talk that the tournament was "fixed" or that certain teams had preference.

Why not have separate FX and USX prep rooms?

Because FX and USX must be run in both buildings because of double qualifiers.

Why can't all extempers be put in one building?

Because many extempers, last year 93, are double qualified in debate, LD, OO, and even Duo, which must be run in 2 buildings.

What should an extemper do?

Realize that the split prep room is for prelims only. FX and USX extempers from a school need not be together in prelims because the US Foreign Policy/Defense area will not be in prelims. Prelim topic areas are the easiest topic areas. Concentrate on giving smooth, well informed speeches so that you finish in the top 60 and qualify for round 7.

In round seven begin elims with a new record (prelim scores don't count). In elims the prep room of 120 qualifiers (60 USX; 60 FX) will be in a single prep room.

Each extemper should have his/her own basic files.

During prelims extempers are unlikely to need obscure files or large squad files. During prelims oral practice, not intense research will be key to breaking.

In the 1960's, 4 person debate teams shared files and tournaments placed one team on affirmative while their other half debated negative. Next round the team switched sides and files. By 1975, each debate team was required to have their own files. Now each extemper must begin to develop individual materials for National prelim rounds.

**Extemp Topic Alert: In USX add topic area "U.S. Foreign & Defense Policy". Remove "People in the News".**

## NEW LINCOLN DOUGLAS TOPIC COMMITTEE NAMED

President L.D. Naegelin, with recommendations from the NFL Council L/D Committee: Frank Sferra, chair; Glenda Ferguson and Brother Rene' Sterner, FSC, has appointed a new L/D Topic Committee which will begin work in Minnesota.

### Term Expires 1998

Carol Anderson, NM  
Tim Averill, MA  
Fred Peterson, NE

### Term Expires 1999

Barbara Garner, TX  
Stan Lewis, KS  
Brit McCabe, OK

### Term Expires 2000

Lydia Esslinger, NY  
Rev. Raymond Hahn, PA  
Dale McCall, FL

The Committee Facilitators will be Lowell Sharp (CO) and Fran Berger (FL). The Committee Advisor is Dr. James J. Unger, The American University, Washington, D.C.

Council Minutes  
Hall of Fame Inductees

Page 24  
Pages 26-27

< In Your June Rostrum >

Tournament Schedule Pages 6-7  
District Election Results Pages 36-37

*The Rostrum provides an open forum for the forensic community. The opinions expressed by contributors to the Rostrum are their own and not necessarily the opinions of the National Forensic League, its officers or members. The National Forensic League does not recommend or endorse advertised products and services unless offered directly from the NFL office.*



# Minnesota Welcomes You

Minnesota: The Land of 10,000 Lakes. Home of the legendary lumberjack Paul Bunyan and many a tall tale. Known for its winters, hockey, lutefisk and lefse, ice fishing and a few "grumpy old men". Much more awaits you in Minnesota!

This summer, Minnesota will play host to the 1997 Star of the North NFL Nationals. We invite you to discover the North Star State as you go for the gold in competition in debate, speech and student congress.

The Minnesota Debate Teachers Association is the proud sponsor of the second NFL national tournament to be held in Minnesota. The MDTA is an active professional organization which has been a national leader in promoting the educational value and competitive excellence of debate. Other organizations supporting the Star of the North Nationals are CTAM (Communication and Theater Association of Minnesota) and the Southern and Central N.F.L. districts.

Bloomington, the fourth largest city in Minnesota, will be the site of most tournament activities. The tournament will begin Sunday, June 15 when schools register at the Radisson South Hotel in Bloomington. Schools will receive tournament materials, tickets for special events they have ordered, maps and information about the Twin Cities.

A tournament kickoff celebration will be held Sunday evening at the Mall of America, the largest enclosed shopping and entertainment complex in the country. Students and coaches will be welcomed in a brief ceremony by Minnesota dignitaries and NFL officials. Knott's Camp Snoopy, the world's largest indoor amusement park, has then been reserved for students and coaches to enjoy from 6:00 to 10:00 that evening. Full food service will be available. Buy your tickets in advance with the order form included in the tournament booklets sent to all district chairs.

Coaches and students may also attend the NFL Diamond Key Awards Assembly which will be held in the Ford Playhouse Theater at the Mall. A reception will also be held for coaches that evening in the Mall.

Tournament competition for debate and speech rounds prior to finals will be held at Jefferson High School, Hubert Olson Middle School and Hubert Olson Elementary School in Bloomington. Speech rounds will start each morning and conclude in early afternoon as debaters arrive to compete in the afternoon and evening. Student congress will be held at the Hilton and Holiday Inn Select hotels in Bloomington.

Final rounds will all be held on Friday at the Minneapolis Convention Center. This facility is a 20-minute trip from the Bloomington hotels during normal traffic times. You may drive yourself or use the shuttle service provided at a nominal fee. Participants will enjoy a first-class site for final rounds and the awards assembly that evening. Numerous shopping and eating choices are available throughout the day in downtown Minneapolis.

A variety of special entertainment events have been scheduled to meet the diverse interests of our visitors. Discount tickets have been arranged with the Minnesota Twins who will play the Pittsburgh Pirates in interleague play Monday and Tuesday evening and Wednesday noon. A special NFL "Night at the Dome" will be part of the Tuesday night game. Pick your game and send in your ticket orders. Who knows, you may be picked to throw out the first ball.

Amusement park enthusiasts can visit Valleyfair any day during the week and enjoy 5 world-class roller coasters, water rides, laser light shows and live entertainment. One price admission buys you unlimited access to the main Valleyfair attractions. Reserve your discount tickets now.

Other discounts have been arranged with the Minnesota Zoo, Underwater World at the Mall of America and the Mississippi River Cruises. Free admission will be offered at Canterbury Race Track for horse racing enthusiasts. Coaches may wish to try their luck at Mystic Lake Casino. Check the tournament website for more details regarding special attractions.

The Twin Cities offer an abundance of shopping and entertainment choices for visitors. Discover and enjoy the best of Minnesotal





# Tournament Information

## Minnesota & Twin Cities

Minnesota is home to 4.5 million people with 1 million residing in the Twin Cities of Minneapolis and St. Paul and its suburbs such as Bloomington, the tournament site.

## Air & Ground Transportation

The Twin Cities are served by most major airlines. You are encouraged to fly Northwest Airlines, the official tournament airline. NFL receives future air ticket credits for each ticket purchased this summer. Check the discount rate explained in tournament mailings.

Schools will need to rely on their own vehicles or rental vehicles for transportation during the week. Rental cars will be available for pickup at the airport and may be arranged through AAA Travel, the official tournament travel agency. A shuttle bus will be scheduled to transport students and coaches to final rounds on Friday if you wish to avoid traffic and parking problems. Tickets will be sold for \$5 at registration and during the first three days of the tournament.

## Hotel Facts

Tournament hotels are all located within 15 minutes of the Minneapolis-St. Paul International Airport and the main tournament sites.

Hotel reservations must be made by directly contacting the preferred hotel from the list provided in the tournament booklet. Requests will be filled on a first-come, first served basis.

## Tournament Site Information

All prelim rounds for debate and speech will be held at Thomas Jefferson High School, Hubert Olson Middle School and Hubert Olson Elementary School in Bloomington. These three schools are within a 5-minute walking distance from each other so you can park for the day at one site.

The Hilton and the Holiday Inn Select hotels will be the Student Congress sites.

A full food service and snack concessions will be provided at reasonable prices throughout the day.

Souvenirs, in addition to those provided at registration, will be sold during the week at tournament sites. A great way to remember your

involvement in the Star of the North Nationals and support the local committee fundraising.

Various vendors representing colleges and educational publishing companies will display their opportunities and materials.

A professional photographer will be available to take commemorative pictures of teams and/or individuals at a nominal fee.

A resource center with copy machine, fax, phone and computers will be available for students and coaches at the Jefferson site.

## Tournament Schedule

A detailed tournament schedule with times and sites for all meetings and events will be published by N.F.L. in the Rostrum and made available at registration. Outlined below is a listing of general events to preview your week in Minnesota.

### Sunday - June 15

Registration	9:00 A.M. - 3:00 P.M. Radisson South Hotel
Opening Ceremony	6:00 P.M. - 6:30 P.M. Mall of America
Student Party	6:30 P.M. - 10:00 P.M. Knott's Camp Snoopy Mall of America
Diamond Key Awards	7:00 P.M. - 8:00 P.M. Ford's Playhouse Mall of America
Coaches Reception	6:30 P.M. - 10:00 P.M. Mall of America

### Monday - Thursday, June 16-19

Competition	7:30 A.M. - 9:00 P.M.
-------------	-----------------------

### Friday - June 20

Debate/Speech Finals	8:00 A.M. - 7:30 P.M. Mpls Convention Center
Super Congress	8:00 A.M. - 4:00 P.M. Hilton
Awards Assembly	8:00 P.M. Mpls Convention Center



# PHILLIPS 66/NATIONAL FORENSIC LEAGUE NATIONALS TIME SCHEDULE

Sunday June 15	Monday June 16	Tuesday June 17
8:30 Registration for Tournament Officials	7:30 Draw Extemp	7:30 Draw Extemp
9:00 - 3:00 General Registration Radisson South Ballroom	8:00 Speech 1	8:00 Speech 4
9:30 Speech Tab Meeting	10:00 Draw Extemp	9:30 Draw Extemp
10:00 Debate Tab Meeting	10:30 Speech 2	10:00 Speech 5
11:00 First Time Coaches and Schools Reception	12:00 Draw Extemp	11:30 Draw Extemp
11:30 Congress Parliamentarians and Officials Meeting	12:30 Speech 3	12:00 Speech 6
11:30 Extemp Officials Meeting	2:30 Debate 1	2:30 Debate 4
11:30 Supplemental and Impromptu Tab Meeting	5:00 Debate 2	4:30 Debate 5
12:30 District Chair Reception	6:30 Hall of Fame Dinner	6:30 Debate 6
1:30 District Chair Seminar	7:00 Debate 3	
3:00 - 8:00 Late Registration Seville Hotel Lobby		
6:00 Opening Ceremony Camp Snoopy Mall of America		
6:30 - 10:00 Student Party Coaches Reception Camp Snoopy		
7:00 Diamond and Hall of Fame Awards Ford's Playhouse at Camp Snoopy		

*(Schedule subject to change. Check tournament program and Posting Stations.)*



# PHILLIPS 66/NATIONAL FORENSIC LEAGUE

## NATIONALS TIME SCHEDULE

Wednesday June 18	Thursday June 19	Friday June 20 Finals	
		Main	Supplemental
7:30 Draw Extemp	7:30 Draw Extemp		
8:00 Speech 7	8:00 Speech 10	8:00 Humorous Interpretation Finals	8:00 Expository
8:30 Debate Runoff Round	8:30 Debate 10		
10:00 Draw Extemp	9:30 Judges Meeting Semi-Final and Finals	9:30 Lincoln Life Lincoln/Douglas Finals	9:30 Poetry
10:30 Speech 8	11:30 Draw Extemp	10:30 Dramatic Interpretation Finals	
12:30 Debate 7	12:00 Speech 11	12:00 PER U. S. Extemp Finals	12:00 Prose
2:30 Debate 8	12:30 Debate 11	1:30 Original Oratory Finals	1:30 Impromptu
4:00 Draw Extemp	2:00 Draw Extemp		
4:30 Speech 9	2:30 Speech 12	3:30 Debate Finals	3:30 Extemp Commentary
	3:00 Debate 12		
	3:30 Coaches Meeting Auditorium	5:00 DACOR/ASPA/PER Foreign Extemp Finals	
	4:30 Policy and LD Announced as needed	6:30 Duo Interpretation Finals	
6:30 Debate 9	Debaters' responsibility to check postings.	8:30 Awards	

*(Schedule subject to change. Check tournament program and Posting Stations.)*

Presenting the

## ***National Forensic Consortium 1997 Summer Debate and Events Institutes***

- **CALIFORNIA NATIONAL FORENSIC INSTITUTE**

Located at Univ. of CA, Berkeley

Dates: June 15 - June 28

Policy & LD Debate: \$1,135

One-week, June 21 - 28; LD: 15-22 \$595

- **STANFORD NATIONAL FORENSIC INSTITUTE**

Located at Stanford University

Policy Debate, July 26 - August 14: \$1,450

LD & IE, August 1 - August 14: \$1,125

LD extended week, August 14-21: \$675

- **AUSTIN NATIONAL DEBATE INSTITUTE**

Located adjacent to UT Austin

Policy Debate, July 5 - July 21: \$875

LD Debate, July 5 - 18: \$725

One-week, July 14 - 21; LD: 5-12: \$475

- **NATIONAL DEBATE INSTITUTE, D.C.**

Located at U of MD, Washington, D.C.

Policy Debate, July 5 - July 21: \$1,135

Policy 30-round technique session: \$1,385

LD Debate, July 5 - July 19: \$895

*All of the above listed prices include tuition, housing, and meals. Note our value-priced, national caliber programs in Austin & Washington, D.C. Prices and dates are tentative.*

*Commuter plans and one-week topic preparation and/or technique sessions, as well as other options, are offered at some camps and are described in detail in the program brochures. An additional \$75 non-refundable fee is required upon application.*

### ***Reasons to Choose an NFC Summer Camp***

• Tried and True Programs. Last year nearly 500 students from throughout the nation chose NFC summer camps over other options. Over the last two years NFC students have participated in late elimination rounds of such tournaments as: Wake Forest, Bronx, the Glenbrooks, Greenhill, St. Mark's, Loyola, Redlands, Emory, the Tournament of Champions, NFL Nationals and virtually every other major national circuit tournament. We encourage you to seek out former NFC participants and discover for yourself why NFC camps are superior. You can get the same quality experience!

• Staff/Student Ratio. Attend a program where you will get access to personalized debate and events instruction. Last year's NFC camps averaged staff to student ratios of 1:7. *This is based on primary instructors only, and does not even include access to supplemental staff.*

• Experienced, National Caliber Instructors. Our staff is composed of instructors who have achieved the pinnacle of success in every important aspect of the forensic community, including collegiate and high school coaches who have led their students to final rounds at most major national tournaments and former competitors who have attained similar success, including NFL and TOC final round participants. Our staff is hand-picked for their ability to teach their successful techniques to students of every level of experience.

• Unique Combination of Value & Quality. The NFC understands that at the end of the summer you would like to have enough money remaining to attend tournaments and use your new skills. We also realize that you don't want to sacrifice high quality for low cost. NFC camps provide an optimal combination of quality instruction, individualized attention, and value.

For free brochures and applications,  
and financial aid forms on request  
(brochures available late February):

***National Forensic Consortium***

1678 Shattuck Avenue, Suite 305

Berkeley, California 94709

or call: (510) 548-4800





# ORAL INTERPRETATION OF LITERATURE: A DISCIPLINE OR AN EVENT

by Collette Mikesell Winfield

Somewhere in every speech coach's file there's a copy of "Yellow Wallpaper". You remember the wrenching monologue! The young woman, for reasons now forgotten, is confined to this room, and this room is covered with yellow wallpaper, and the yellow wallpaper is driving her more crazy than she was already before someone confined her to this yellow wallpapered room.

For years, "Yellow Wallpaper" was the "standard" in the old event called memorized dramatic declamation. You remember "declamation"; "elocutionary recitation," . . . "harangue" at its best. In the old days, judges heard not only dramatic "dec", but oratorical dec (vehemently delivered) and humorous dec (exaggeration plus), as well. Those were the days, at least in Iowa High School speech, when coaches each fall restocked their files with 70-cents-each cuttings from Wetmore Declamation Bureau and Edna Means Dramatic Service. Those were the days when coaches studied the talent levels of their "pupils" and rubbed their hands in glee when one of them appeared to have the "talent" to handle "Yellow Wallpaper". Why? Because "Yellow Wallpaper" won. Those were the days of much "event" and not much "discipline".

I don't know how much talk went on in Judges' Hospitality rooms in those days about "terrible interp", about "How many more times am I going to have to listen to that 'Wallpaper' thing," about "Why can't these kids do something besides yell and screech at me?" about pieces that "are just not appropriate," and about "Whatever happened to good literature?" I was a student during those days, doing a little "Wallpapering", "Leacocking", and "Speech Judge's Nightmaring" myself. I only waited for the "1"s to appear. For me as a student, winning was all. So I picked what would win, and I performed it in order to "win". For me, interp was an event. I have a feeling that I was not very different from the young people who enter the "event" called interp today.

I have no idea whether I did "good" interp as a high school student or not. I didn't know much about interp, so chances are that I probably yelled, and screamed, and patronized, and bulged my eyes with the best of them. I do remember believing that the more traumatic or dramatic something was, the better. The more "ha ha" funny something was, the better. It's probably just as well that I will never hear myself as judges heard me then.

But now, I judge the "event". I haven't had anyone dump "Yellow Wallpaper" on me during recent years, but what I have heard in some of these rounds has produced a nightmare or two. I've been yelled at, screamed at, and patronized. I've seen bulging eyes, bulging neck chords, and bulging mouths. The over-dramatic! The overdone! The overkill! Technique at the expense of feeling. The "eventers" on their way to "1"s and all-tournament trophies. Volume in place of intensity, bent-over and distorted bodies in place of authentic age; cracking, whiny writhing voices and horror-house poses to present every over-55 character ever created by poet, novelist, or playwright. I've heard the rhythm of Shakespeare turned into lousy prose. I've heard all 1,564 lines of "The Congo" sung in a monotonous inflectional pattern that never lets the voice go higher than this nor lower than this. I have listened to every "... man in the moon marigold" in the country, sometimes two times in a round. I have sighed. My mind has wandered. My eyes have grown glassy. My head has nodded. Sometimes I am embarrassed for the young students who grit their teeth at me, wrench their hands, throw their heads, roll their eyes, screech with forced laughter, and bellow at the tops of their lungs. Where do they get this stuff, anyway? Real human beings don't behave like this! Do they? Well, their experience tells them that this "stuff" wins, and winning is what an "event" in Forensics competition is all about.

Oh, yes! Still I judge. And

though I complain about what I hear or don't hear, I keep thinking there's something important about this "event". And there is.

## Good Reading Connects Us With Truths

Charles Laughton, one of the world's finest interpreters, commented once that one of the reasons people liked to hear him read in public was that "for the moment, they [were] all bound together, and momentarily [lost] their sense of being alone" (*The Atlantic*, June, 1950). Corny as it may sound, deep in each of us is a loneliness that, in part at least, can be satisfied by the truths about human experience told to us by the poets, the essayists, the novelists, and the playwrights who give us the literature to interpret. Altruistic? Yes. But a reason for preserving the event that ought to be seriously considered in this age of non-connection with anything.

## Literature Connects Us With Themes and Life Experience

Several years ago, when the content of lit books was divided up into value units (Determination, The Lessons of Life, Courage, Love), there was a very good chance that a freshman or sophomore in high school might really understand that "The quality of mercy is not strained" and that there are "miles to go" before any of us can sleep and that a person who feels spiritually fulfilled just does not go home "one calm, summer night" and "put a bullet through his head." Chances are that human strengths and weaknesses were talked about more frequently in the literature and speech classroom and that students had better opportunity to describe how and why a parable works. Without the help of the lit book, themes, and discussion about human experience, I'm not sure there are many places in this busy world, this technologically bound society, for young students to think long or seriously about love and hate, death,

jealousy, mercy, ambition, and Nature.

I remember the first time that "time", and the passing of time, and age, and loss, and death really hit me emotionally. Funerals were not uncommon to me. I had experienced many deaths by the time I was 16. None of them impacted upon me as significantly as did Doug Spaulding's experience in *Dandelion Wine* when he emotionally recognizes age and time and loss and death for the first time as a 12-year-old. I read and read and reread the section that details his illness, an illness adults were afraid would kill him. No one knew why Doug was ill. The reader knows that it's his inability to accept time, and loss, and death. My experience with Doug Spaulding was crucial to my own growth. Later in life, my experiences with Brutus, Prufrock, Richard Cory, Miniver Cheevy, Philip Carey, "Patterns", and Stephen Daedalus were equally crucial to my growth. But these experiences, remember, came through a value-centered approach to literature which my instructors used.

### Is It Any Wonder?

We've become a society that must find ways to escape from the stress that's killing us all. Our young students reflect our own problems focusing on depth. Court TV, the saga of O.J. Simpson, "Married With Children", Beevis and Butthead, Harlequin novels, the *National Enquirer*, the *Star* and sitcom after sitcom serve as models of the depth we are not able to tolerate. Is it any wonder that our students, generally, are light-years from the power and mastery of a language that can carry the breadth and depth of human experience? Is it any wonder that some of the "literature" chosen by students for the interp event is shallow, mundane, obscene, profane, and downright crude? Is it any wonder that some students never seem to move from the "technique" into the experience of the literature?

Students cannot interpret what they do not understand. Nor can they "be interested" in literature they cannot understand; in literature they cannot "identify" with; in literature they have not "lived" to some extent.

### Can Students Really Understand?

But let's be realistic. We're working with 15, 16, 17, and 18-year-olds. Can they really understand the evil of Iago, the torture of Brutus, the emptiness of Richard Cory? Can they really enrich the universal experience of the literature they choose by drawing on their own experience? Probably not. Not unless we begin to teach them some ways to understand the depth of Iago's evil, the pain of Brutus, and the spiritual barrenness of Cory. Unless we are willing to teach, to strengthen the discipline of interpretation, we face nothing but the technique-ridden pile of "Wallpaper" this event has been prone to encourage.

Students who "go out for" interp likely do so because they believe they can "do" the event. They likely want to "win" the event. It's possible that they have heard someone older on their high school speech team "do" some "funny" or "traumatic" piece that won. Bingo! They want to do "that story so-and-so did." They want to "try that cutting that won district last year." And so the cycle goes. Students without real education in interpretation picking up pieces of literature that are "popular" or that are beyond them or that they have not studied and analyzed. Techniqueville, here we come!

### How Shall The Interpreter Work?

It wasn't until I went off to the University of Northern Iowa and met Elaine McDavitt, the Charlotte Lee of Iowa, that I learned that there was something better to do with literature, even "Yellow Wallpaper," than yell it, scream it, grind my teeth at it, and generally overdo it to the point of death.

The "Yellow Wallpaper" issue comes back to some fundamental questions much older than the "What will win" question. The fundamental questions lying at the root of oral interpretation in forensic competitions are "Shall the interpreter be trained or shall the interpreter be educated?" "Shall the interpreter learn to work through the literature or on top of the literature?" "Shall extrinsic skills be applied by the student interpreter, or shall the interpreter learn to mask

those skills and embrace the art that comes from authentically understanding the human experience inside the literature?"

I hear the moans and groans of speech coaches all over the country. "Do you mean I have to guide each student in selecting a cutting for interp?" Yes. "Do you mean I'm supposed to expand a student's awareness of good literature?" Yes. "Do you mean that all these 'winning' cuttings have to go?" No. "Do you mean that I have to turn every artificial performance from a student into authentic interpretation?" Absolutely. It's not as difficult as it may appear. And unless someone makes the first move, the "event" called interpretation is doomed for the trash can.

### How Much Technique Shall We Teach?

True! "Techniques" have to be learned. Techniques of voice and techniques of body must be practiced over and over again, just as one practices scales and arpeggios and pivot shots and three pointers and split-fingered fastballs. Practicing the techniques of voice means learning what the voice can do in terms of pitch, and range, and quality, and force, and intensity, and inflection. Practicing means learning how these elements of voice must be used in order to recreate beauty, and age, and anger, and hurt, and disappointment, and joy, and how many more pieces of experience for an audience.

Practicing the techniques of body means learning what the face can do, what the head and neck can do, what the entire body can do, overtly and covertly. Practicing means learning how those elements of body movement and intensity must be used in order to recreate fear, and peace, and jealousy, and question, and happiness, and pain, and enthusiasm, and hate, and love, and how many more pieces of experience for an audience.

Practicing the techniques of voice and the techniques of body requires the student to listen to himself again and again and again and watch himself again and again and again. The student interpreter must learn to hear herself as others hear her and see herself as others see her.

The practicing of techniques



requires the student to try different things with the voice and body and to recognize that words (verbs and adjectives particularly) carry feelings. The voice should not be sounding the same on the word "spinning" as it sounds on the word "whispering." The voice should not be sounding the same on the word "flung" as it sounds on the word "prissy." On and on the study of language, its meaning; the voice and body, their power and flexibility go. Anyone who intends to communicate well through life will be continually in the process of studying language and its meaning; the voice and body, their power and flexibility.

The oral interpretation of literature is not easy, and students should not be led to believe that it is.

### Techniques Must Be Automatic

Learning to breathe from the diaphragm; learning to change pitch, rate, emphasis, quality, duration, and inflection in order to create certain effects is mandatory for the interpreter. Learning to use the facial muscles, the neck muscles, the shoulder muscles, posture and positioning in order to create certain effects is mandatory. The skills of voice and body must be developed. No one picks up a baseball in a championship game and throws the perfect slider for the first time in his life. The pitcher who can use the slider to strike out the .434 hitter in the bottom of the ninth inning with a one-run lead and the based loaded is the pitcher who remembers exactly what his body, his legs, his hips, his arm, his hand, his fingers, his shoulders, his head, his neck, and his mind have to do in order to re-create the perfect slider. The more the skills, the techniques, are practiced, the more automatic the recall of those techniques becomes.

### Practice Is Imperative!!

Aha! The more the skills, the techniques are practiced, the more automatic the recall of those techniques becomes! Without enough practice, the techniques look and sound like techniques. With enough practice, the techniques become part of the student. They look and sound natural. They look and sound

easy. They are authentic, and thus, have become art.

"But there's no time to do all of this," I hear the clamoring masses of coaches exclaiming!

Maybe there is.

Some approaches to working with oral interpreters can potentially make better orators, better extempers, and better debates. And the number one approach involves doing with groups of students what we sometimes try doing with individual students, one at a time. It's the working one on one that burns us out.

### Let's Uncover Some Dusty, But Valuable, Practice Exercises!

The old school of elocution and declamation led to some now old and forgotten speech textbooks that contained some wonderful "technique practice" exercises (exercises used when the world of speech education focused on teaching voice and diction). The *New American Speech* by Hedde and Brigrance is one of those old textbooks. In it, were poems for practice; poems that rhymed; poems that the student had to read using different voice qualities (raspy, thin, sepulcher, full-rounded, breathy). Through the practice, the student was to come to some understanding of his own voice's ability and its limitations. In it were short descriptive cuttings, full of adjectives and adjective phrases. Full of color words which the student was to practice saying so the words actually sounded like their meanings (onomatopoeia at its best). In it were character monologues, some of them dialectical, through which the student was to bring a character to life, and to "hear" the missing side of the conversation, and to practice the duration of pause necessary for us, as audience, to imagine what was said by the missing character (*ala* Bob Newhart). In it were dialogues, through which the student practiced changes of voice, changes of stature to suggest the differences in the two people speaking. In it were example statements which the student was to practice by changing emphasis, placing the emphasis on a different word each time the statement was read. Through such an exercise the student came to understand how

meaning changed as emphasis changed. Tracking down an old Hedde and Brigrance book, or some other text from the 30's, 40's, and 50's and using some of the old "technique-building" exercises of voice and diction and body movement can help the student interpreter develop skills necessary for authentic and artful performance.

"So, the very stuff called technique you lamented at the beginning of this article is the very technique you now want me to use!" I hear the coach exclaiming. Yes! Yes! The technique must be learned and practiced carefully so that later, the student can vocally and bodily rely upon that practice to serve automatically once a real, live audience is present.

### This Is The House That Jack Built?

"This Is The House That Jack Built" is one of the best practice pieces for students who are trying to learn how to use vocal and body techniques. The repetitive pattern and bounce of the poem forces the student to either bounce along in sing-song fashion OR to THINK THE THOUGHT, which is a skill the student must learn to perfect.

*This Is The House That Jack Built*  
*This is the house that Jack built*  
*This is the malt*  
*That lay in the house that Jack built.*

*This is the rat*  
*That ate the malt*  
*That lay in the house that Jack Built.*

*This is the cat that killed the rat*  
*That ate the malt*  
*That lay in the house that Jack built.*

*This is the dog*  
*That worried the cat*  
*That killed the rat*  
*That ate the malt*  
*That lay in the house that Jack built.*

*This is the cow with the crumpled horn*  
*That tossed the dog*  
*That worried the cat*  
*That killed the rat*  
*That ate the malt*  
*That lay in the house that Jack built.*

*This is the maiden all forlorn*  
*That milked the cow with the crumpled horn*  
*That tossed the dog*  
*That worried the cat*  
*That killed the rat*  
*That ate the malt*  
*That lay in the house that Jack built.*

*This is the man all tattered and torn  
That kissed the maiden all forlorn  
That milked the cow with the crumpled  
horn  
That tossed the dog  
That worried the cat  
That killed the rat  
That ate the malt  
That lay in the house that Jack built.*

*This is the priest all shaven and shorn  
That married the man all tattered and  
torn  
That kissed the maiden all forlorn  
That milked the cow with the crumpled  
horn  
That tossed the dog  
That worried the cat  
That killed the rat  
That ate the malt  
That lay in the house that Jack built.*

*This is the cock that crowed in the morn  
That waked the priest all shaven and  
shorn  
That married the man all tattered and  
torn  
That kissed the maiden all forlorn  
That milked the cow with the crumpled  
horn  
That tossed the dog  
That worried the cat  
That killed the rat  
That ate the malt  
That lay in the house that Jack built.*

In the poem, the verbs carry the picture. We have malt "that lay," a rat "that ate," a cat "that killed," a dog "that worried," a cow "that tossed," a maiden "that milked," a man "that kissed," a priest "that married," and a cock "that waked." Now while young, inexperienced students may come around slowly to this idea, eventually, through the good coach-reader's help, they can come to see that "killed" should sound different than "ate" or "worried" or "kissed;" and "married" should sound different than "waked" or "milked." The coach can challenge the student. "How many different kinds of sounds can you make your voice do?" "How does 'tossed' really sound?" "Who can give 'tossed' a different sound?" Potentially, the task of making the voice sound like the action or the image expressed by the word is tough, but through simple things like "This Is The House That Jack Built," technique practicing can be turned into fun time. Obviously, choral reading of pieces like Jack allows the student to experiment more with techniques because the single student's voice is not standing out, all by itself.

## From Other Voices, Other Rooms.

by Truman Capote  
(copyright, 1948 by Random House, Inc.)

*Falling...Falling...Falling!* a knifelike shaft, an underground corridor, and he was spinning like a fan blade through metal spirals; at the bottom a yawning-jawed crocodile followed his downward whirl with hooded eyes: as always, rescue came with wakefulness. The crocodile exploded in sunshine. Joel blinked and tasted his bitter tongue and did not move; the bed, an immense four-poster with different rosewood fruits carved crudely on its high headboard, was *Falling...Falling...Falling!* a knifelike shaft, an underground corridor suffocatingly soft and his body had sunk deep in its feathery center. Although he'd slept naked, the light sheet covering him left like a wool blanket.

The whisper of a dress warned him that someone was in the room. And another sound, dry and wind-rushed, very much like the beat of bird wings; it was this sound, he realized while rolling over, which had awakened him.

An expanse of pale yellow wall separated two harshly sunlit windows which faced the bed. Between these windows stood the woman. She did not notice Joel, for she was staring across the room at an ancient bureau; there, on top a lacquered box, was a bird, a bluejay perched so motionless it looked like a trophy. The woman turned and closed the only open window; then, with prissy little sidling steps, she started forward.

Joel was wide awake, but for an instant it seemed as if the bluejay and its pursuer were a curious fragment of his dream. His stomach muscles tightened as he watched her near the bureau and the bird's innocent agitation: it hopped around bobbing its blue-brilliant head; suddenly, just as she came within striking distance, it fluttered its wings and flew across the bed and lighted on a chair where Joel had flung his clothes the night before. And remembrance of the night flooded over him: the wagon, the twins, and the little Negro in the derby hat. And the woman, his father's wife: Miss Amy, as she was called. He remembered entering the house, and stumbling through an odd chamber of a hall where the walls were alive with the tossing shadows of candleflames; and Miss Amy, her finger pressed against her lips, leading him with robber stealth up a curving, carpeted stairway and along a second corridor to the door of this room; all a sleepwalker's pattern of jigsaw incidents; and so, as Miss Amy stood by the bureau regarding the bluejay on its new perch, it was more or less the same as seeing her for the first time. Her dress was of an almost transparent grey material; on her left hand, for no clear reason, she wore a matching grey silk glove, and she kept the hand cupped daintily, as if it

were crippled. A wispy streak of white zigzagged through the dowdy plaits of her brownish, rather colorless hair. She was slight, and fragileboned, and her eyes were like two raisins embedded in the softness of her narrow face.

Instead of following the bird directly, as before, she tiptoed over to a fireplace at the opposite end of the huge room, and, artfully twisting her head, seized hold of an iron poker. The bluejay hopped down the arm of the chair, pecking at Joel's discarded shirt. Miss Amy pursed her lips, and took five rapid, lilting, ladylike steps....

The poker caught the bird across the back, and pinioned it for the fraction of a moment; breaking loose, it flew wildly to the window and cawed and flapped against the pane, at last dropping to the floor where it scrambled along dazedly, scraping the rug with its outspread wings.

Miss Amy trapped it in a corner, and scooped it up against her breast.

It is such a simple piece, but it is such a moving piece. The student has to start by figuring out what to do with the word "falling." Three times the word is used at the beginning of the cutting. The student cannot just dump out "falling" three times with the same sound, the same inflection, the same intensity. Somehow, the three "falling"s have to sound different and be different in their implication. At the beginning, Joel is coming out of a dream. He is moving from the dream world into the reality of Miss Amy's presence in his room and the plight of the bluejay whom Miss May is determined to trap. The student must vocally and bodily work inside that dream world, visualizing it and leading the listener to visualize it. Then, the student must move the listener to the "whisper of the dress" that tells Joel that "someone [is] in the room." The contrast needed here is the stuff from which good interp is made. The interpreter must learn to move the listener from one world to the other. The student must learn how to use changes in rate, changes in vocal quality, changes in duration (length of time on a word or a phrase), and pause to build contrast. By practicing different kinds of sounds, the student can be taught the kinds of vocal sounds that are believable; the sounds that make a listener believe that the student is "inside the literature" and not on top of it.

Why not use practice pieces like the Capote cutting and the Jack rhyme that everybody practices,



everybody performs for awhile, everybody gets up in front of the room to read for everybody else? Why not use these practice pieces to build real student confidence and real student ability to hear what works and hear what does not work when it comes to uses of techniques? Why not coach by letting the student know "I don't believe you" when technique starts to take over and the emotional content of the literature is lost?

### Use Some Children's Lit

*The Cat Next Door* by Betty Ren Wright is a simple, purely drawn children's story told from the viewpoint of a little girl, seven or eight, who remembers that "last summer" she, her mother and her father went to visit her grandmother and grandfather, who lived, presumably in a summer home near, we are led to believe, a beautiful lake. In the girl's memory are the happy times, the boat rides in the evenings, the search along the shores for "duck babies," the laughter, the flowers, Grandma's home-made cookies, and the warmth of Grandma herself. Mostly, there was the warm dock, the *swip, swip* of the water, and the waiting for "You-Know-Who," the Cat next Door, who Grandma said, never much came around people.

The girl remembers *last summer* and her relationship with The Cat next Door, who had come down to the dock, who had meowed, and talked, and shared with her the warm summer. "I wish this day could last forever," the little girl tells her grandma. "It will," her grandma responds, "because that's how long we're going to remember it." The experience of "last summer" was obviously significant for the little girl and for her growth as a person.

Now it is this summer and the little girl does not look forward to the trip back to the cabin. Grandma, we learn, has died. "I don't want to go to the cabin this year." The little girl says. "Nothing will be the same." And so, it seems, nothing is. The greeting from Grandpa is not the same. The old dog Gabe seems even older. The little girl so much misses her Grandma. She goes down to the familiar dock and lies on the warm wood, sad and lonely. She waits, and in a while, she hears the time meow of "you-know-who." The Cat next

Door has returned to her, this time with two new little kittens. What a splendiferous surprise! the little girl responds, commenting that "Grandma can't come.... Just remember that she'll love you forever and ever." With that, the little girl is able to "go on," able to greet the new little kittens, happily, for herself and for her grandma.

### The Cat Next Door

by Betty Ren Wright

(Illustrated by Gail Owens and published by Holiday House, New York)

*Last summer our vacation started when we drove through a dark tree-tunnel and out into the sunshine. "Look!" I shouted. "There's Grandpa's cabin. There's good old Gabe.*

*The big dog Gabe lay on the back porch. He stood up slowly, with his tail flip-flopping.*

*My mother said, "Gabe is smiling."*

*Grandpa and Grandma came out on the porch. We hugged and laughed. Everybody laughed--Grandma and Grandpa and my mother and my father and me. Grandma laughed most of all.*

*When the grown-ups went inside, I ran around the cabin, past the swing, past the orange flowers that curved like a waterfall over the path. I raced down to the lake and out onto the dock.*

*I lay on the sun-warm wood and listened to the gulls call Hello, hello again from way up in the sky. I peeked between the boards to see the water underneath me. Swip, swip, it whispered. Hello again.*

*Then Grandma came out on the dock. "I knew I'd find you here," She said.*

*"I'm waiting for you-know-who," I told her. "Maybe she won't come this year." Grandma sat down beside me. "She might have lots of things to do on such a splendiferous day, but she'll come if she can. Anyway, you know she'll love you forever and ever."*

*I lay very still, hoping. Soon I heard a soft sound. It was a tiny, whiny voice. Closer and closer it came. I pretended not to hear.*

*"Meow," the voice whined, right in my ear. Something poked me with its nose. Whiskers tickled my chin.*

*"Meow," said The Cat Next Door. Where've you been all year, you silly girl?*

*The Cat Next Door never said hello to anyone but me. Each morning of my vacation she came out on the dock. She let me rub her stomach. She watched my toes wiggle in the water. When I jumped off the end of the dock with a loud splash, she scooted away, complaining to herself in her tiny, whiny way.*

*Last summer I learned to swim in the lake. I let Grandma ride on my crocodile raft, and once she fell off. Sometimes she made cookies and lemonade. We had a picnic at the end of the dock.*

*Every evening we went for a boat ride after supper. Grandpa ran the motor, and*

*I sat with Grandma up in front. We watched for duck babies along the shore. We watched the gulls glide up and down, riding a roller coaster made of air. Every morning I said, "I wish this day could last forever."*

*"I do, too," Grandma said. "And it will last forever, because that's how long we're going to remember it."*

*This summer I didn't want to go to the cabin.*

*"Grandma won't be there," I said. "Nothing will be the same."*

*My mother looked sad. "You're right," she said. "It will be different this year. But we must go to keep Grandpa company for a while. He's very lonesome."*

*One morning we drove through the dark tree-tunnel and into the sunshine, just the way we did last summer. The cabin was there, and Gabe was lying on the back porch. He lifted his head, and he wagged his tail once or twice, but he didn't get up.*

*"The poor old fellow's losing his pep," my father said. I thought, Gabe is going to die pretty soon, like Grandma did.*

*Grandpa came out on the porch by himself. We hugged, but we didn't laugh the way we did last summer.*

*Afterward, I walked around the side of the cabin, past the swing and the orange flowers. I looked at the shining silver lake. Gulls rode the waves out in the middle, bobbing like my bathtub toys. I wished Grandma could see them.*

*I walked out to the end of the dock and lay down. That was the worst time of all. I could hear the water under the boards, but what I wanted to hear was Grandma's footsteps on the dock.*

*What I wanted was to hear her call, "How about a sugar cookie, sugar?" I listened hard, trying to make it happen, but the only sound was the swip, swip of the water.*

*I begin to cry.*

*Then I heard something else--a tiny, whiny voice, calling from a long way off. It came closer and closer. I lay very still with my eyes shut tight, pretending not to hear.*

*Something poked me with its nose. Whiskers tickled my chin.*

*"Meow," the whiny voice said. There've you been, you silly girl?*

*I opened my eyes and looked at The Cat Next Door. Then I sat up and stared. Sitting a little way behind her were two kittens. One looked just like The Cat Next Door. The other one didn't.*

*I put out my fingers, and the kittens came right up to me. One of them crawled into my lap. The other one tried to bite my big tow. I forgot to feel sad.*

*Surprise you, didn't I? meowed The Cat Next Door.*

*The kittens started talking in their tiny, whiny voices. They said, Where've you been, you silly girl?*

*I laughed out loud. It seemed as if I could hear Grandma laughing, too. It seemed as if we were all there, at the end of the dock, together.*

"Grandma cant come," I said. "But it's okay. She would love your splendiferous surprise, and so do I. Just remember that she'll love you forever and ever."  
 "I'll remember," said The Cat Next Door. Then, for Grandma and for me, I said hello, hello to the kittens for the very first time.

This is a simple, pure story; one that can be used as a fine teaching tool for the young interpreter. The story hangs on the *contrast* between "last summer" and "this summer," between the "joy" experience through a living grandma and the "joy" learned through a grandma now dead. The story has no huge, breathtaking climactic build. It depends upon an interpreter's ability to show a child's quiet acceptance of change and death to make its impact. "Nothing would be the same this year," the child laments; and yet, something is the same. The Cat next Door, constant in its loyalty, constant in its trust, comes to the dock to greet the little girl. This is the best kind of lesson for a little girl to learn. For while the grandmother is gone, she is not gone. So long as the memory of the relationship among the girl and the grandma and the Cat Next Door remains, Grandma is there, forever. The interpreter has to learn how to "drive" the intensity of that very beautiful lesson of life. The story "sits down" on the little girl's ability to rise from her grief and greet two new little kittens, symbols of newness, symbols of continuance, symbols of birth and life and death and birth again. Subtle though the story's emotional content is, it whacks a mighty wallop when read by an interpreter who can, through voice and muscle tone, recreated the inherency of it.

### Students Must Know Logical and Emotional Content

The student must be able to describe the logical content and the emotional content of any piece of literature she intends to read aloud. What is the situation? What events have created or triggered the situation? What has happened to intensify the situation? What is the relationship among the characters in the situation? What does each character contribute to the situation or the problem? How does the situation develop? What is the logical

climax of the story, the poem, the essay, the cutting? What is the emotional climax of the story, the poem, the essay, the cutting? If the two are not one, why? What is the resolution? The description can be as single-dimensional as the one I have just presented of *The Cat Next Door*, or it could be as multi-dimensional as what the student would have to be able to say about James Joyce's *Portrait of The Artist As A Young Man* or Shakespeare's *Othello*. Oh, and by the way, the student has to be responsible for talking about the WHOLE piece of literature from which a cutting comes, not just the cutting itself. Some students might actually try to get by with studying a cutting only, heaven forbid, unless the coach requires the student to describe, talk about, the WHOLE.

### Students Must Stay Inside The Literature

The poem, the story, the novel, the essay, the play must speak for itself, from inside itself. The student must be able to read the piece of literature from inside itself. What does the poem, in and of itself, say? What does the story, in and of itself, do? What is the inherency of the novel? What does the inherent development of the essay lead the reader to conclude? These are the questions that must be used by the student who studies the literature and the coach who guides the student in that study.

Will a student be willing to meet one or two hours each week with other interpreters, in order to work on developing voice and muscle tone? Guess so, if that student intends to compete. Will a student be willing to study/analyze literature, describe logical and emotional content, and make decisions about how that logical and emotional content has to be delivered to an audience? Guess so, if that student intends to compete. I'm suggesting the need to put some "teeth" into the "event" so that students begin to understand that interp, done well, may take just as long as extemp, done well. "So, if you're looking for an easy out or an easy way to win, interp ain't it!!!" That's the kind of message that might begin to dent the problems of selection, the problems of "too much technique," and the problems of

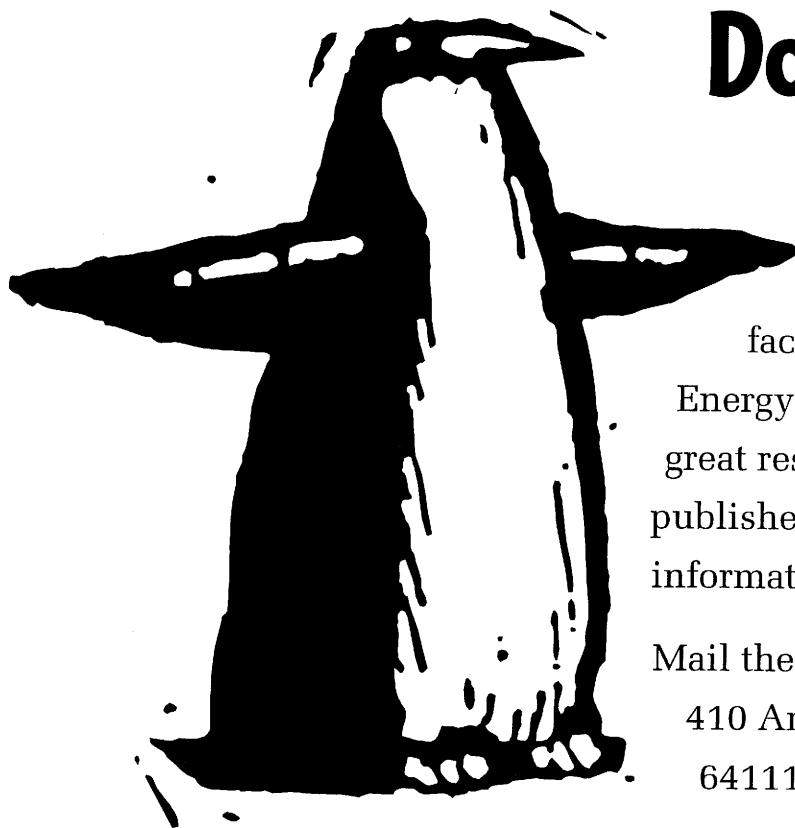
shallowness faced by coaches everywhere.

Interpretation requires the reader to pull the emotional content from a piece of literature and bring it to life for the listener. Joy, sorrow, anger, hurt, jealousy, love, hate, and grief, are universal emotions which we can feel again and again, sometimes more intensely than at other times. These emotions are not found in the reading of words. Nor are they found by pointing vocal and body techniques at us. They are found in thoughts, in whole images, in whole scenes which the student interpreter must learn to talk about, feel, and visualize out of real and vicarious experience. Starting with simple, pure, but honest emotions found in simple, pure stories like the cutting from *Other Voices, Other Rooms* and the story *The Cat Next Door* invites the student to work with basics before trying to compete in the World Series. The student cannot work with "tough," multidimensional pieces until she can bring the simple, single-dimensional pieces to life.

I did not understand the logical or the emotional content of "Yellow Wallpaper" very well when I performed it all those many years ago. I knew enough "technique" to "win," but that may only have been true because others in my sections knew less technique. That, unfortunately, has been a common scenario for judges over the years. We are forced, by the thing called "competition" to select the least bad of the bad, the best of the worst." It's time for less technique and more Art, for less declaiming and more interpreting, for less "event" and more "discipline."

(Collette Mikesell Winfield competed and coached in Iowa. She is currently a college teacher, who often appears at NFISDA workshops. She is one of NFL's finest writers and teachers.)





# Don't Get Left Out in the Cold!

You'll ice the competition with facts and figures from the Renewable Energy Information Resource Kit and other great resource materials from HCI, a leading publisher of magazines, newsletters, and information products in the energy field.

Mail the coupon below to HCI Publications, 410 Archibald Street, Kansas City, MO 64111 or fax the coupon to 816-931-2015.

## Choose from the following catalog of materials:

### THE BASIC KIT:

#### **Renewable Energy Information Resource Kit**

Available now. FREE

### PACKAGE 1:

#### **Current Energy Policy/Strategy**

Available May 15. \$25

### PACKAGE 2:

#### **Affirmative Case Material** Available June 15. \$25

### PACKAGE 3:

#### **Coaches/Teachers Briefings** Available July 15. \$25

### PACKAGE 4:

#### **Updates** Available August 15. \$25

Get a FREE Package. Order any three of the above packages now and you'll receive the fourth package free!

## ORDER FORM

You can send your order form and payment to:

HCI Publications, 410 Archibald Street, Kansas City, MO 64111 USA.  
Phone: (816) 931-1311, Fax: (816) 931-2015

Name \_\_\_\_\_

Address \_\_\_\_\_

City \_\_\_\_\_

State \_\_\_\_\_ Zip \_\_\_\_\_

Phone \_\_\_\_\_

Package	Price Each	Total
<i>Renewable Energy Information Resource Kit</i>	FREE	_____
<i>Package 1: Current Energy Policy/Strategy</i>	\$25	_____
<i>Package 2: Affirmative Case Material</i>	\$25	_____
<i>Package 3: Coaches/Teachers Briefings</i>	\$25	_____
<i>Package 4: Updates</i>	\$25	_____
Shipping & Handling		\$ 5.00
<b>TOTAL ORDER</b>		_____
Multiple Package Discount (\$25 for orders of 4 packages)		_____
<b>GRAND TOTAL</b>		_____

☐ Check Enclosed.

☐ Charge my ☐ VISA ☐ MasterCard ☐ American Express ☐ Discover

--	--	--	--	--	--	--	--	--	--	--	--	--	--	--	--	--	--	--	--

Account Number

--	--	--	--	--	--	--	--	--	--	--	--	--	--	--	--	--	--	--	--

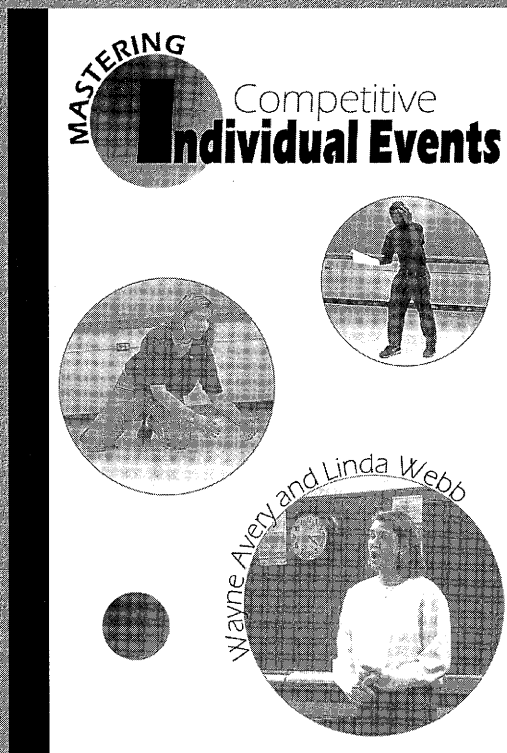
Exp. Date



# Clark Publishing

Dedicated To Developing Communication Skills

*... Serving All Of Your Communication Curriculum Needs!*



## Mastering Competitive Individual Events

written by,

Wayne Avery and Linda Webb

This new text offers students and coaches a comprehensive step-by-step study of the major speech and interp events offered in state and national competitions.

In addition to modern analysis of theory, full speeches from national final rounds are scripted, as well as example interp cuttings.

Utilizing a step-by-step approach, students and coaches can learn how to prepare for each event and receive suggestions for tournament

presentations. Full texts of successful speeches and useful classroom activities for interp and speech are offered.

Authored by experienced teachers who have coached over 50 students qualifying for national competition in Individual Events and who have produced several state champions, this is one of the most complete, yet practical texts to be offered in competitive Individual Events. Call for pricing and availability.

## Debate • Speech • Drama • Journalism

Phone: 913-862-0218 • In US 800-845-1916

PO Box 19240 • Topeka, KS 66619-0240



<http://www.clarkpub.com/>

Visit Our Web Site and view our complete line of Communication Texts



# TRY MOCK TRIAL: PART III -- WHO GOES WHERE?

by M. Donna Ross

*Prosecutor's Wife at dinner: Did you have a big, complicated legal battle in court today?*

*Prosecutor: No, just a little plain-tiff.*

Sign-ups are over. You've auditioned or "know" the talent you have to work with. Isn't it about time to read the case? Skim it twice. Don't even try for an exhaustive analysis. Visualize witness possibilities. You probably won't have to think too hard. There are always three witnesses. They nearly always represent three categories (listed from most to least important).

1. Big Yahoo (that's the defendant or respondent on defense and the key witness or plaintiff on the other side).

2. Big Mouth (that's the expert witness or at least the one that seems to know it all).

3. Little Sidekick (that's often a character witness and many times may be a liability to the side he's supposed to be testifying for).

Since the case writers try to make most characters playable by witnesses of either sex, they are all named Pat, Lee, and Chris.

The most logical thing to do is pick your best attorney material, so naturally I always start by casting the witnesses. Consider these reasons. First, think evaluators. Most of your judges will be attorneys in private practice. They tend to be overly impressed with good witnesses—probably because they are so burdened by their own clients' lack of acceptable looks and speech. They tend to undervalue attorneys—probably because they are comparing the high school students to themselves—so obviously no one can really measure up. Second, while a good attorney can speak effectively in a number of slots, only witnesses can speak eloquently merely by walking to the witness chair. Try casting witnesses by these criteria:

1. Can the witness be appealing? Even hard-boiled professional witnesses will sell their testimony when it's topped with a liberal dollop of charm.

2. Can the witness present the character in a way that says what you want said? To illustrate, I once cast a student who was a high school junior as defendant in a murder case. (The student was five 'one' and weighed 101 pounds—in a wet parka.) He was accused of drowning his wife and 10-year-old son while on a camping trip. We never once mentioned his size; yet at every trial, the evaluators brought up one thing. He did not look as though he could drown even a blind and rather tired kitten. So, try casting against type and for sympathy.

3. Consider the order for witnesses testimony. Will the witnesses be able to complement each other? While your first order consideration has to be how best to tell the story, don't forget egalitarian concerns. Diversity in sexes and races can only redound to your favor.

To order witnesses, the first must tell the basic story. Bury your weakest, most boring, least important or least controversial one in the middle. Aim to have the greatest appeal in the last witness. That appeal can be emotional or logical or both.

For student attorneys, start at the end of the trial and try to match student jobs to each student's best skills. Place your very best debate rebuttalist in the clean-up spot of closing. This student must be able to recognize and answer key arguments, sell your own key points and be persuasive and slow. Now consider who is best at cross-x. Give that person the most crucial or the most complex cross-x. Often, this will be a cross of an expert. Next, you will need someone good at cross but also "sensitive" to deal with any potentially sympathetic witness such as a defendant. Now, consider who would be your best orator to give the opening statement.

It took me a three years to figure this next bit out; but once I did, I was able to save myself a lot of time and confusion. Since you must divide the eight duties equally; with three attorneys, you're best off to

have each do a cross and a direct (after choosing who's to open and who's to close). Even with four attorneys if you follow the pattern of having 2 different tasks, you will have greater flexibility when changes become unavoidable later.

Do not think that I find directs unimportant. They are the key to being understood and being understood is the key to success. But, you have total control over directs. You can rewrite questions to make them close to objection-proof, and you can prepare the witnesses to the *nth* degree which gives even novices a good level of comfort and self-confidence. Besides, when you put off deciding who does which direct until last, the choices usually work themselves out without much added brain-drain.

Another consideration is how well your pairs of examiners and witnesses fit together as a team. If they are close friends, they will spend more time together and present a much more unified appearance than if they don't get along or if they seldom see each other.

One good ploy is to have any given attorney do the direct of one witness and either play that witness or cross that witness on the other side. Not only does the attorney really learn the testimony—usually word-for-word—but also he has to examine it as it looks from both sides. By the time he has done that, he won't have missed very much.

When posting the trial assignments, try also posting other attorney duties. Assign them to the student who best suits each one. For "head counsel" choose someone charming; for "procedure" choose someone analytic or knowledgeable about the law; for "exhibits" choose someone well-organized and trustworthy with detail; and whoever is left keeps time. With 3 attorneys, the "exhibits" person keeps time.

Here is a sample posting:

## Mock Trial Attorney Duties

Notations: The numbers by the names of the attorneys indicate additional duties for each:

1. Head Counsel (THE  
(Ross to Page 40)

**TRAIN WITH THE #1 SPEECH TEAM IN THE NATION!**

**B  
R  
A  
D  
L  
E  
Y**

## **Bradley University's Summer Forensic Institute**

**July 13-26, 1997**

The Bradley University speech team has been hailed by the Associated Press as "the nation's dominant college speech team." This is your chance to learn from the best competitors and coaches in the nation!

### **Why Bradley?**

**COST:** Tuition (includes room and all meals) is only \$725.00.

**VALUE:** Each student receives daily individual coaching from their own assigned instructor.

**EDUCATION:** Every student will gain new insights into his or her event. Coaching is tailored to fit the particular needs of each student. It doesn't matter if you're a national champion or just getting started, you'll learn something new at Bradley.

**RESEARCH:** Computers are available to everyone, including access to Internet and World Wide Web research.

**PERFORMANCE:** You will see national championship performances from members of the Bradley Team.

**THE WINNING ATTITUDE:** We believe that it takes much more than a good script and pretty gestures to be a champion. At Bradley, you will learn exactly what it takes to be an excellent performer.

**FOR A BROCHURE AND APPLICATION CALL OR WRITE:**

The Division of Continuing Education

and Professional Development

Bradley University, Peoria, IL 61625

or e-mail Jan Rodgers at [sooner@bradley.edu](mailto:sooner@bradley.edu)

or call (309) 677-2377

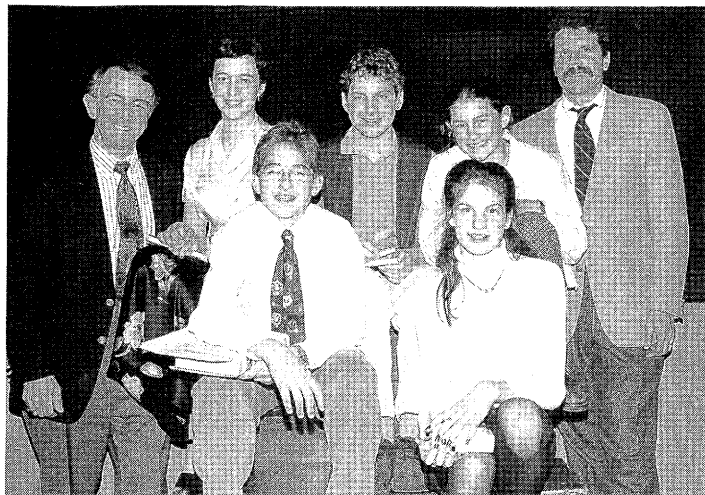


**VISIT US ON THE WORLD WIDE WEB**

<http://www.bradley.edu/campusorg/speech>



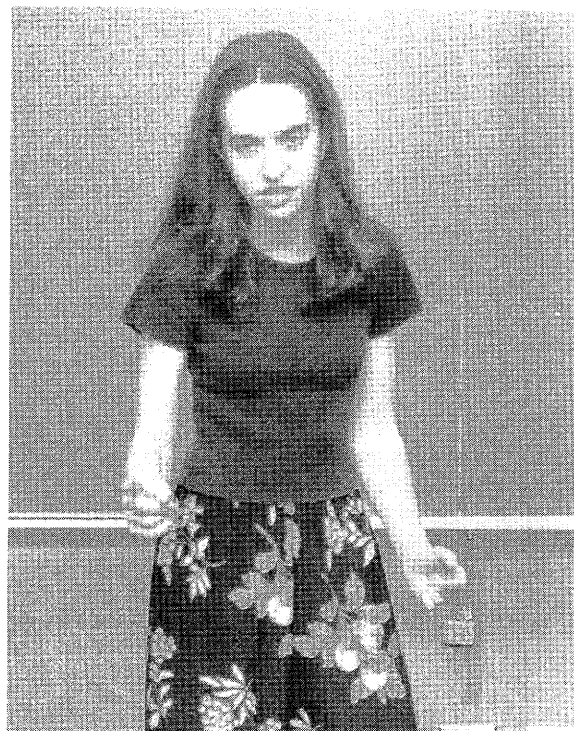
# Scarsdale Middle School Contest

**NJFL**


At 9 p.m., after an exciting four hours involving nearly 300 students, the fourteenth annual Scarsdale Middle School Speech Contest culminated with the presentation of winners in the five categories. Pictured here with public speaking teacher Paul Schwarz, at left, and contest chairman Doug Rose, at right, are, rear: Liz LaMont, Personal Experience; Mike Levinson, Humorous Presentation; Lauren Friedman, Dramatic Interpretation. Front: Greg Bronson, Poetic Interpretation; Cailean O'Connor, Original Oratory.



About 120 volunteer judges hear the student presenters, in nearly every room in the building. They are parents, school administrators, board members, and other interested community members. Included in that number are many high-school students, former top finishers, who are invited to return as judges. Here Doug Rose briefs the judges in the school library before they fan out to begin the evening.

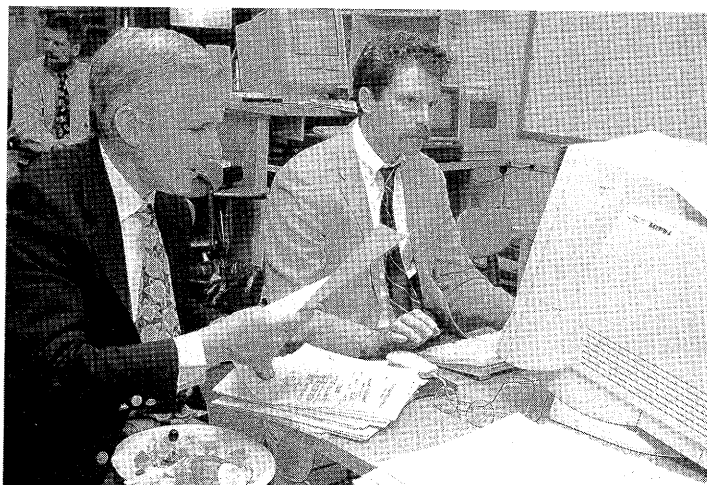


Maggie Wittlin delivers a Dramatic Interpretation.

Scarsdale Middle School Principal Michael McDermott chats with two judges as they await their assignments.



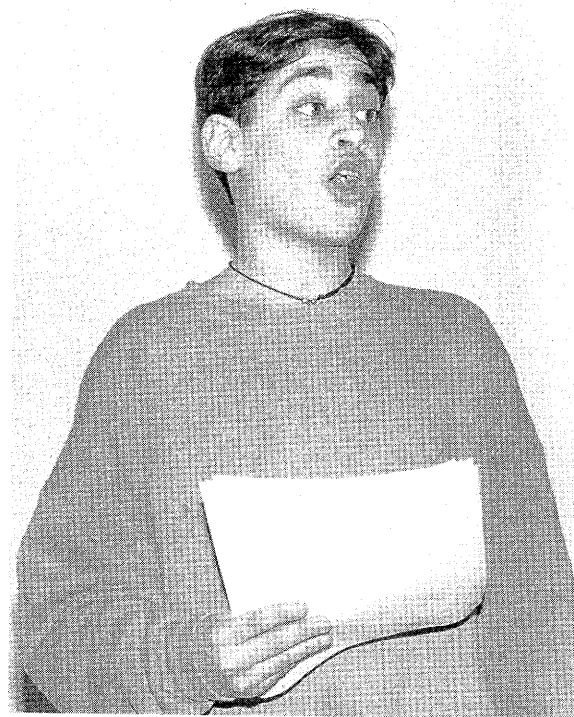
*The judges fill out detailed evaluations, and score each presenter. Scores are tallied after the two preliminary rounds.*



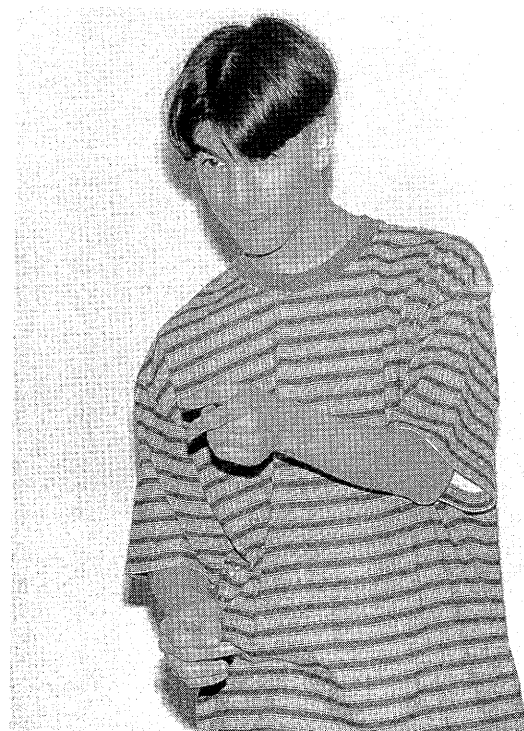
*During the dinner break, the services of the school's computer lab are used, as some 1,800 scores are tallied and averaged. English Teacher Jim Andreski works with Rose at one of the ten computers used in this process. The top five in each category move immediately to final rounds, which take place at about 8:00 in five of the school's large-group spaces.*



*The school's PTA is a major factor in the success of the event. In addition to helping to enlist volunteer judges, the PTA sets up a buffet supper for the judges in the library. The students have supper in the school's cafeterias, as everyone awaits the outcome of the preliminary rounds.*



*All presentations are required to be four to seven minutes in length. Six or seven students present in each room. The three-judge panel then moves to a second room, where the second preliminary round takes place. Here Sasson Abada delivers his Poetic Interpretation.*

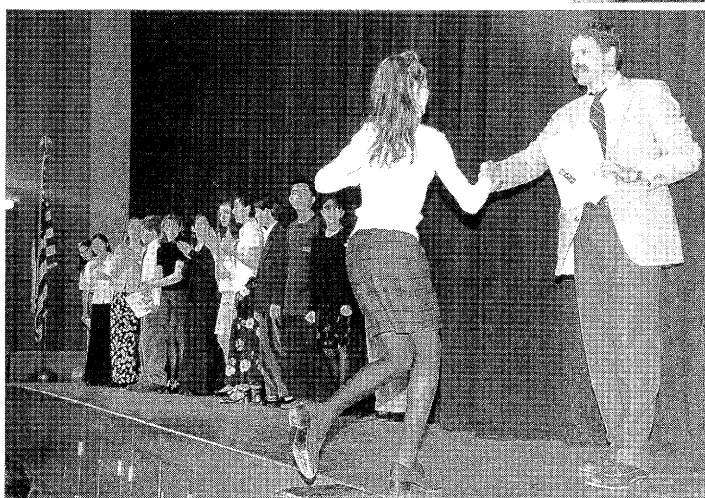
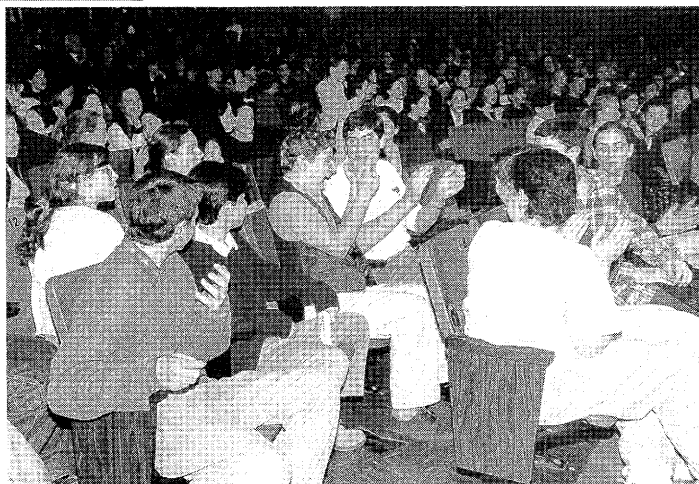


*Jared Strumwasser's Humorous Presentation earned him a second-place finish.*



*The names of finalists are read out in a cafeteria, as a cable TV technician prepares to record the Oratory finals. The TV crews taped six rooms of preliminaries, four of five finals, and the assembly the next day where the winners gave their speeches to the entire student body. All of this is then shown later on local cable TV.*

*In a packed auditorium at 9:00, the results of the final competition are read out. Mike Levinson learns he is the winner.*



*All twenty-five finalists are called up to the stage and are congratulated by Contest Chair Doug Rose.*

*The comment sheets are returned to all students the following day. Here English Department Chair Clyde Tressler reviews the judges' comments with one of his seventh graders, Jesse Cohen. Tressler came to Scarsdale in 1983, having run contests in another school. In that first spring of 1984 he established the Scarsdale event, which quickly grew to its present size. Tressler set up the three-week integrated speech contest unit, in which all students in seventh and eighth grade present a speech in class, and about one-half enter the contest. This unit is in addition to the annual three-week speech unit that every sixth, seventh, and eighth grade class takes with Paul Schwarz.*





# NATIONAL CHAMPIONSHIPS IN 1995 & 1996



## S P ARTAN D E BATE I NSTITUTES

1  
9  
9  
7

---

FOR DETAILED INFORMATION ABOUT SDI, PLEASE VISIT  
OUR WEB SITE: <http://www.acm.cps.msu.edu/~wyattgeo/sdi/>  
OR E-MAIL US AT: [repkowil@pilot.msu.edu](mailto:repkowil@pilot.msu.edu)

---

**WHY SDI?** After all, there are many summer institutes from which to choose. The SDI offers the following distinct advantages:

**A COMMITMENT TO PRACTICE ROUNDS** - By providing entering students with an affirmative case and several negative positions, SDI can begin practice rounds almost instantly, with some students debating as early as the second day of the camp. Although SDI produces large amounts of high quality evidence, we believe the only way to improve your debating skills is by providing many opportunities to debate in front of knowledgeable critics. *In addition, both '97 sessions will conclude with judged tournaments, relaxed, yet structured, opportunities for students to validate the education received during their stay.*

**CURRICULUM DIVERSITY** - Staff members and lab placements exist for all skill levels, ranging from novice groups to those choosing to polish varsity skills. In addition, the SDI administration is committed to a curriculum emphasizing the diversity of ideologies in the debate community, enabling graduates to succeed before a variety of judging audiences.

**COACHES' WORKSHOP** - SDI offers a unique opportunity for coaches to gain familiarity with both the topic and theoretical issues of their choice. College credit is available, as are flexible attendance options. Contact Prof. Roper for further information.

**SDI SCHOLARSHIP PROGRAM** - SDI can provide limited need-based financial assistance.

**COMPETITIVE PRICES/ FLEXIBLE OPTIONS** - SDI is committed to offering outstanding debate institutes at affordable prices, which include tuition, room and board, and copying of lab evidence.

**3 WEEK INSTITUTE: July 20 - August 8, 1997 - \$995**

**2 WEEK INSTITUTE: July 20 - August 1, 1997 - \$715**

FOR FURTHER DETAILS AND FREE APPLICATIONS, PLEASE CONTACT US ELECTRONICALLY  
(SEE ABOVE), OR WRITE THE INSTITUTE DIRECTOR:

*Prof. James Roper, Philosophy Dept., 503 South Kedzie Hall, Michigan State University, East Lansing, MI 48824*

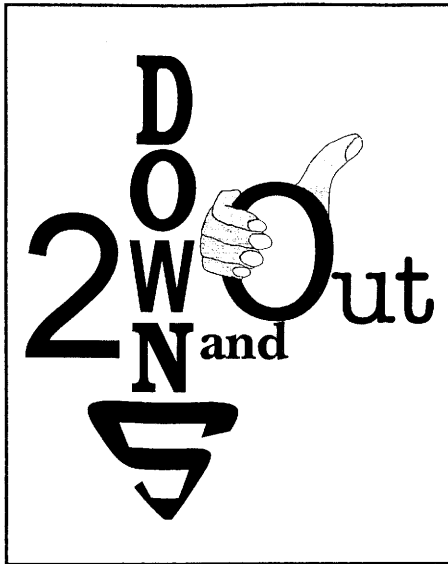
**OR CALL ANY OF OUR DIRECTORIAL STAFF, AT ANY TIME:**

*Prof. James Roper*  
517-699-5141

*Will Repko*  
517-337-2361

*Mr. John Lawson*  
810-203-3618





## NAKED CAME THE NEGATIVE

"I tell you, they've misidentified the body!" She was so angry she was beautiful. Blushes red as ink spilled in her cheeks, and her long blonde hair caressed her naked shoulders. I didn't ask why she was wearing a thong bikini in my office. After all, this is detective *noir* fiction destined for a family publication. Freshmen might read this. But you gotta find it where you can. My name is Lincoln Douglas, and I'm a forensics detective.

"Look, Linc. See this? Would he have that in his hand?"

I steeled my nerves to look at the grainy crime scene photograph. It appeared to be a straw man. But the blue blood was still obvious. After all, this was the remains of a founding member of the Issues family. Conservative, rather cold and always misunderstood, his name was Inherency. Someone had done him in, and it wasn't pretty.

But why should she care? Delores Disadvantages was riding high; she'd been on everyone's flowsheets for years. But still, it was obvious that the death had moved her. Strange, since everyone had always said that Inherency never had any impact.

She was a looker though. It was obviously a lie that she outweighed everything else. She had obviously avoided too much Beef, and the result was Growth that left no Deficits behind. I wished I could buy her a Malthus. I dreamed of stashing her in my file box and never recycling

her. I wanted to hold her in my hands like a smooth, fast pen.

Her eyes narrowed. "Stop it. You're on the brink, aren't you? There's been a crime committed, and you're making horrible puns. Look at this picture again!"

So I did. Yes, she was right. Underneath the body, there was a piece of paper. It looked like a column from a family magazine. "The Cutting Edge" it was titled. She was right; Inherency would never be caught dead with that. The body must be somebody else.

I checked my Missing Theory files. Solvency? No, she was seen just last year in Indiana during a quarterfinal round. Stock Issues? A good prospect, except he had run rampant in Kansas last fall. And the Squirrel Gang--"Goals" Criteria, "Need" Plan and "Alternative" Justification--were known to be hiding out in a printing press in Waco, Texas, awaiting the Millennium. And the lab reports didn't match "Logical Argument"'s fingerprints, which were all over this column. I didn't want to think about that.

"I'll check it out, Sweetheart. I charge two hundred a day plus coaches lounge privileges. And make sure you include a purchase order number." She nodded and turned to go. "And babe, stay out of those INRs, will ya?" She scowled and slammed the door, leaving me globally warmed and catching sweet whiffs of nuclear war in the air.

Later that day, as I snarfed the nachos at the tournament, my interest was aroused by a largish man with a loud tie stained with salsa; "Haven't seen him, and if anyone asks, I didn't tell you." As I approached others, they quietly ran off to judge. It was obvious; people would do anything rather than talk to me.

Finally I collared a woman who had stopped to cop one last Oreo cookie. She struggled, but a six point response overwhelmed her. She talked.

"You're right. Everyone knows that it can't be Inherency. He can't even be adequately defined, much less murdered. It was rumored that a man named Pfau got real close to him a few years back, but then..." Her shapely shoulders shook shakily. No wonder her tongue twisted. "The- the t-talk is..." but suddenly her face clouded and she fell, the last crumbs of the obviously poisoned cookie tumbling from her blue lips.

Someone very powerful was obviously going to do anything to stop me from finding the truth.

I waited outside the tournament after the final round of the day. It was dark. It was too quiet. Suddenly a ox box slammed into my skull. Everything went as blank as a lay judge's ballot.

Then my head was pounding with a thousand simultaneous performances of *Agnes of God*. I slowly opened my eyes to find myself inside a shabby house, and in front of me a vaguely familiar face. It could have been a trick--after all he was known to have many disguises. But the house itself was a dead giveaway; it obviously needed minor repairs, and there were barriers all over the place. Obviously, Inherency had found me before I could find him.

"So, gumshoe," he sneered, "We meet at last. It's lucky for you that debate is a non-violent activity, or you'd been found in the same shape as old Prima Facie."

So that's who it was! The old Latin boy had always lived a poverty stricken existence, what with being saddled with a name that nobody knew how to pronounce. And now he was dead.

As if he was reading my flowsheet, Inherency spoke. "Yes, he demanded too much. He wanted everyone to be reasonable, and to present coherent policies. It was obvious he had to go. Time's too short."

"But what about you? Aren't you a goner, too?"

He laughed. It was harsh and too fast. He was on something. Maybe one too many injections with the old hypo tester? "No, you novice! I'm in the witness protection program. I'm the only one left alive to speak against her."

"Who?"

"Idiot! Delores Disadvantages! She's guilty of a status quo offense! One by one, she's bumping off the other issues so she can have the negative all to herself!"

I thought. Of course! No wonder she wanted me to find Inherency! "Isn't it inevitable that she'll get you?"

I then saw a smile as nasty as a tag team cross-ex. "She'll never find me here. I've got powerful protection. The best there is."

"Who?"

"Think! Why do they keep putting those crazy 'significantly' and (Davis to Page 40)

## NFL EXECUTIVE COUNCIL MEETING APRIL 20-21, 1997 AUSTIN, TEXAS

The NFL Executive Council meeting was called to order by President L. D. Naegelin at 9:10 am. All councilors and alternate Brannan were present.

### Governance

Moved by Sferra, seconded by Keller to reappoint Brother Rene Sterner, FSC as the Council Administrator Representative. Passed. Unanimous.

### Tournament Rules

Moved by Keller, seconded by Crabtree that the same source may not be used in more than one interp category at NFL District or Nationals. Passed. Unanimous.

[Explanation: Contestants in Duo and Solo interp events may not use the same interp source. Interpers may not use a source used in HI, DI, or Duo and then use the same source in Prose or Poetry.]

Moved by Roberts, seconded by Sferra that new National Tournament qualifying quotas be adopted:

[First number is actual participants or teams at district; second number is qualifiers]

Debate/Duo 4 = 1; 10 = 2; 30 = 3; 50+ = 4  
L-D/Individual 4 = 1; 12 = 2; 38 = 3; 58+ = 4

Passed. Unanimous.

Moved by Ferguson, seconded by Belch to count team debate as a single entry at the District Tournament. Referred to Committee:

Ferguson (chair), Belch, and Sferra.

Moved by Keller, seconded by Roberts that for 1997 the Phillips Performance Award be awarded at Nationals to the 10 schools who have recorded the largest number of New Members (not new degrees) in the 1996-97 school year. [The coach of the first place school will be awarded the SCA "Coach of the Year" award.] Schools need not be present at Nationals to win. Passed. Unanimous.

President Naegelin appointed a Committee to further study changes in the above awards. Roberts (chair), Sterner, Crabtree.

Moved by Belch, seconded by Ferguson to delete the last sentence of Rule 14 which provides penalties for excess entries by a school at the District Tournament. Defeated. Aye: Belch, Ferguson, Crabtree. No: Tate, Naegelin, Sterner, Sferra, Roberts, Keller.

The Council discussed Brannan's question about a one loss team in debate being forced to debate an undefeated team a second time but took no action due to pairing difficulties in late rounds.

President Naegelin appointed a Committee to study penalty options for excess entries: Belch (chair), Keller, Sterner.

### Supplementary and Impromptu

The Council discussed Supplemental and Impromptu tab procedures and reaffirmed:

Contestants eliminated from the primary events after Round 6 may participate in these events if pre-registered. As

soon as eliminated, the students should report immediately to supplementary officials.

Each student eliminated in all events prior to Thursday morning or Congresspersons not elected to the Semi Final Congress may, if previously registered, enter Impromptu.

Panels of 5 will be judged by a single judge.

In these contests, all who are ranked in the lower half twice are eliminated except Impromptu which eliminates with one down. Pairing procedures will follow district tournament individual events pairing rules except 3rd in a section of 5 or 4 in a section of 7 is a down. All ties will be broken.

Winners will be chosen by adding the ranks of all preliminary rounds to the judges' ranks in the semifinal and final round. Three judges shall judge semi-finals and three or five shall judge finals.

### Petitions

Moved by Roberts, seconded by Ferguson to accept the petition from Sandra Shelton, coach, to allow Joshua Underwood from Jasper HS, Texas to attend the National Congress. Passed, 6-2-1. Aye: Roberts, Sterner, Ferguson, Belch, Tate, Crabtree. No: Keller, Sferra. Abstain: Naegelin.

### Grants

Moved by Sferra, seconded by Tate that NFL shall co-sponsor the Barbara Jordan Debates with the Henry J. Kaiser Foundation during the 1997-98 school year. Passed. Unanimous. [Details in the September or October Rostrum]

Moved by Naegelin, seconded by Sferra that the authority of the NFL Secretary to award up to \$5,000 to summer institute programs from Phillips Outreach Funds be repealed and that the entire Council vote on each institute request. Defeated. Aye: Naegelin, Sferra, Crabtree. No: Roberts, Tate, Sterner, Keller, Belch. Abstain: Ferguson.

### Financial

Moved by Tate, seconded by Roberts to renew the lease on the NFL automobile. Passed. Unanimous.

Moved by Roberts, seconded by Ferguson that NFL rent space to PKD on a one year trial. Passed. Unanimous.

### National Tournament

Moved by Sferra, seconded by Tate that the following statement be placed in the National Tournament Program:

Any student who vandalizes school or hotel property will be arrested and prosecuted to the full extent of the law.

Passed. Unanimous.

### Internet

The council accepted the invitation of Dr. Alfred Snider and the University of Vermont to place NFL materials on the "Debate Central" website.

### Congress

Committee to examine Congress apportionment: Keller, Brannan.

# Samford University's 23rd Summer Forensics Institute 20 July-2 August 1997

Samford University is pleased to announce the dates and staff for our twenty-second annual summer forensics institute. This year we plan to continue to improve the quality of our Lincoln-Douglas, Policy, and Individual Events offerings.

At Samford University we are firmly committed to offering students the greatest value for their money. We carefully maintain a 7:1 student-faculty ratio. All of our staff are seasoned professional coaches with national reputations. Our curriculum is carefully planned and supervised so that no moment is wasted. Every student gets the individual attention and direction they need to meet their goals and fulfill their potential in a secure and supportive environment. Our program for novice debaters is widely considered one of the best in the nation. Where other institutes have come and gone over the years, the Samford University Institute continues to prosper. The staff of the 1997 Institute includes:

Co-Director William Tate MA	Director of Debate, Montgomery Bell Academy of Nashville, TN; Director, U. Iowa Inst. '86-97; Samford Summer Institute, '87-97
Co-Director Michael Janas Ph.D.	Director of Forensics, Samford U.; Fmr. Coach, U. Georgia and U. Iowa; U. of Iowa Inst. '89-97; Longwood College Inst. '89-93; Samford Summer Inst. '94-97
Skip Coulter MA	Coach, Mountainbrook Jr. High, AL; former Director of Debate, Samford U., '77-87; Samford Summer Inst., '77-97
Heidi Hamilton Ph.D.	Coach, Augustana College, IL; fmr coach U. Iowa; fmr. coach U. North Carolina; Iowa Forensic Inst. '92-97; Samford Summer Institute '95-97
Michael Jordan BA	Coach, Montgomery Academy, AL; Champion Debater, Charles Henderson High, AL and Samford U.; fmr. coach, Mountainbrook High, AL; Samford Summer Inst. '89-97
David O'Connor BA	Champion debate coach at Iowa City West High School; Des Moines Roosevelt; Des Moines Dowling High School. He has had teams to the national finals of most national tournaments. Iowa Debate Inst. '86-97; Samford Summer Inst. '93-97
Dana Vavroch MA	Coach, Bettendorf High School, IA; Cedar Rapids Washington, IA; W. Des Moines Valley HS, IA; Champion Debater, U. of Iowa; U. Iowa Inst. '93-97; Northwestern Inst. '94-96
Director L-D Claire Carman	Asst. Coach, St. John's, TX; 1993 NFL L-D Champion; U. Iowa Inst. '94-97; Samford Summer Inst. '94-97; Rice University
Lori Calvasina	Graduate, Montgomery Academy, AL; Elims at many national L-D tournaments; NFL and TOC qualifier; Bronx and Glenbrook RRs
Brian Fletcher	Graduate, W. Des Moines Valley, IA; Genbrooks Champion, '96; Winner Bronx, Glenbrooks, MBA RRs
Allison Snow	University of Alabama; Elims at many national L-D tournaments; speaker awards at Bronx, Glenbrooks, and TOC; U. Iowa Inst. '96-97; Samford Summer Inst. '96-'97
Director, I.E. Gloria Robison	Champion Coach, Texas Military Inst.; fmr. coach, St. James School (AL); Battleground Academy (TN); U. Iowa Inst. '88-94; Samford Summer Inst. '95-97

Extemp  
Dan Mangis  
BA

Interp.  
John Birdnow  
BA

Coach, U. Alabama; NFL Finalist, Extemp, 1993; National Champion, Student Congress; University of Alabama I.E. Team; DSR-TKA Finalist.; U. Iowa Inst. '92-94; Samford Forensics Inst. '95-97  
AFA Dramatic Duo Finalist '95; University of Alabama champion I.E. team; DSR-TKA Finalist; Samford Forensics Institute '95-97

The goal of the Samford Summer Debate Institute is to provide expert instruction at a reasonable cost. We do not fund any part of Samford Debate through the institute. Fees for the institute cover all essential expenses for students during the two week period. Supervised housing is provided in air-conditioned dormitories. All meals will be covered for students who stay on campus. It is our firm intent to offer high quality at the lowest possible cost to the student. Commuter fees include no meals or housing.

L-D, Policy, and Individual Events	\$775.00 on campus
---------------------------------------	--------------------

For more information about Samford University or the Samford University Summer Forensics Institute write or call:

Dr. Michael Janas or  
Dir. of Debate  
Samford University  
Birmingham, AL 35229  
(205) 870-2509  
mjjanas@samford.edu

Mr. William Tate  
Montgomery Bell Academy  
4001 Harding Rd.  
Nashville, TN 37205  
(615) 269-3959

Samford University is an Equal Opportunity Institution and welcomes applications for employment and educational programs from all individuals regardless of race, color, sex, handicap, or national or ethnic origin.

# HALL OF FAME CLASS OF 1997



*Ted W. Belch  
Illinois*

One of the greatest debate coaches of all time, Ted W. Belch, is the only coach to win the triple crown: The National Championship (NFL); The Grand Championship (NGFL) and The Tournament of Champions (TOC). Moreover, he has had other teams in the final rounds of these premier national events, including the NFL Debate Runners-up in 1996, and the NGFL Debate Champion this year. Additionally, his teams have won many national circuit debate titles: Bronx, Redlands, Loyola, St. Mark's (some more than once) and several select national round robins. His teams have won eight state championships.

Ted, host director of the memorable Glenbrook Nationals in 1991, has earned the Distinguished Service Key and Plaque--third honors, three NFL diamonds, and a Barkley Forum Key. He was named "Coach of the Year" by Phi Lambda Omega and selected to the TOC Hall of Fame. Mr. Belch has served as district chair in NY and Illinois, and has been honored with the Gold Award and Best Chair Communications Award. Ted is a member of the NFL Executive Council where he serves as Chair of the Future Nationals Committee.

A believer in wide participation, Ted's squads regularly led their district in NFL members and degrees. His teams have won the NFL District Sweepstakes Trophy four times, and Sweepstakes Plaque, three. Ted's schools have three times been awarded The Leading Chapter Award.

Each November, Ted directs the Glenbrooks, the largest and most prestigious high school hosted national speech and debate invitational (with over two thousand participants) and the elite Glenbrook Debate Round Robin.



*Emerson Turner  
Texas*

Back coaching at Clear Lake HS (TX), after a brief retirement, Emerson Turner established an outstanding record as coach at Houston's Lamar High School. In 1969, Emerson's team received the BRD-Bruno E. Jacob Trophy and Emerson was presented the Bruno E. Jacob Commendation. In that same year Lamar also won the Senator Karl E. Mundt Congress Sweepstakes.

Emerson has coached a National Champion in Student Congress and third place finishers in debate and extemp.

Lamar won the Leading Chapter Award and the District Plaque and District Trophy. Emerson serves as Assistant Director of the National Tournament.

He has coached 6 debate teams, 3 extemp speakers, and 5 readers to Texas U.T.L. State Championships. His debate team was the first to close out TFA State in debate.

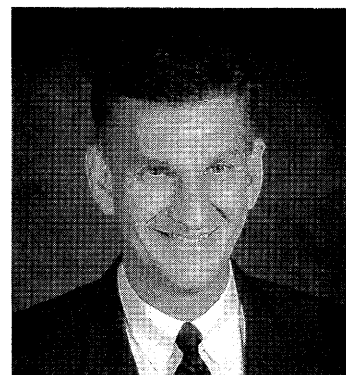
Emerson was a friend of Bruno E. Jacob and is proud that he is a co-founder of the TFA and former NFL Chair in South and East Texas.



# HALL OF FAME CLASS OF 1997

Beginning his career at Marshall (MO) HS and later a coach and now an administrator of Oak Park (MO) High School, four diamond coach Richard Rice ran one of the most successful large programs in NFFL by mixing a sense of purpose, a sense of fun, and a sense of family.

His chapter was five times the largest in the district and seven times he coached the district's high point student. In his exemplary career he qualified 52 students to 18 National Tournaments. Oak Park HS, received the coveted Leading Chapter Award three times, the District Plaque four times and the District Trophy twice. Richard was one of NFFL's finest chairs earning three Gold Awards as well as the NFFL Distinguished Service Key and Plaque. In 1983, he was host co-director of the memorable Kansas City Nationals. His many other honors include: a listing in Who's Who Among America's Teachers, selection as Missouri Teacher of the Year in 1987, and the Outstanding Young Teacher Award in 1977 from the Central States Speech Association. His administrative duties include supervising at risk students, discipline, teacher evaluation, and site based management.



Richard Rice  
Missouri



Seventy-three years a teacher and coach, thirty two years in NFFL, Sister Tsabella began teaching in 1923 at St. Mary's in Marion, Ohio. There she taught 72 second and third graders all by herself. This is a feat that would frighten the most seasoned veteran but Sister accomplished the task at age 18.

She debated in high school at a time when debaters got to debate only one round. She remembers losing the round but gaining the desire to continue with debate. Debate has always been her first love. She coached a state championship debate team in Ohio and a state champion in oratory. She coached in New Mexico before coming to Trinidad Catholic (Colorado) where she has coached for the past 22 years. In addition to coaching, she has served as principal.

At Trinidad Catholic Sister has 25% of the student body competing in speech. And she still coaches CX debate at a small school in a small community with limited library resources. When other coaches faced with fewer obstacles have given up on CX, Sister stays with it because she says, "Debate teaches students to think, to value, and to reason."

At the 1997 Colorado State Speech Tournament Sister Tsabella was honored with the Colorado High School Activity Association's highest speech award: the Sharon Wilch Lifetime Achievement Award.

After teaching for 73 years, this year she finally cut back to teaching just two classes per day. When asked if she'll retire Sister said, "Heavens! What would I do with myself? Well, I would like to write short stories. I think I have a lot to share!"

We know she has a lot to share.



Sr. Tsabella Glenn  
Colorado

# District Tournament Results

## Louisiana

CX --  
Stephen Bailey & Winnie Lee, Newman  
Todd Callais & Farrell Malone, Caddo Magnet  
DUO --  
Thomas Faulk & Denny Dartz, Abbeville  
Adam Swensek & Laurie Ohlsson, Riverdale  
OO --  
Stephen Guidry, St. Thomas More  
Kelly McManis, St. Martin's Episcopal  
USX --  
Chad M. Flick, St. Martin's Episcopal  
Michael Osofsky, Newman  
FX --  
Brandon Pitre, St. Thomas More  
Ben Gingras, Pineville  
DI --  
Justin Bacque, St. Thomas More  
Garland Theriot, Kaplan  
HI --  
Adam Swensek, Riverdale  
Jason Giles, Riverdale  
LD --  
Christine Mire, St. Thomas More  
Adam Magnus, Newman  
Plaque -- St. Thomas More  
Trophy -- Lafayette

## San Francisco Bay

CX --  
Nathan Haratani & Diana Kruze, El Cerrito  
Sebastian Kaplan-Sears & Jake Foster, Head Royce  
DUO --  
Cory Randolph & Alphonso Thompson, James Logan  
Paul Garcia & Eugene Santos, Balboa  
OO --  
Natalie Kam, Miramonte  
Tiquia Bledsoe, Pinole Valley  
Nilsa Lennig, San Francisco-Mercy  
USX --  
Jerri Kay, James Logan  
Candice Tam, Danville-Monte Vista  
Adam Pederson, California  
FX --  
Priyal Subramanian, Danville-Monte Vista  
Matt Rojansky, Danville-Monte Vista  
DI --  
Mehari Gebrekidan, James Logan  
Jessica McLeod, St. Ignatius  
Tafari Walston, James Logan  
HI --  
Mariejoy Mendoza, San Francisco-Lowell  
Daniel Danahy, IV, James Logan  
Rohit Nambisan, Miramonte  
LD --  
Jessica McLeod, St. Ignatius  
Jerri Kay, James Logan  
Anita Wu, Danville-Monte Vista  
Plaque -- Danville-Monte Vista  
Trophy -- Danville-Monte Vista

## West Iowa

CX --  
Matt Heman & Gary Schnoor, Des Moines East  
Sheila Mc Coy & Stephanie Renken, Le Mars  
DUO --  
Karl Miller & Sarah Horvath, West Des Moines-Valley  
Paul Thelen & Sara Lemker, Kuemper  
OO --  
Sarah Horvath, West Des Moines-Valley  
Karl Miller, West Des Moines-Valley  
USX --  
Brian Fletcher, West Des Moines-Valley  
Alison Eggers, Council Bluffs-Lincoln  
FX --  
Jeff Gold, Urbandale  
Erik Martin, Urbandale  
DI --  
Akshay Pradhan, West Des Moines-Valley  
Al Moton, Ankeny  
HI --  
Bill Lawson, Atlantic  
Liz Stachitus, Sioux City-North  
LD --  
Alison Eggers, Council Bluffs-Lincoln  
Stephen Davis, Des Moines-Roosevelt  
Plaque -- West Des Moines-Valley  
Trophy -- Des Moines-Roosevelt

## Show Me

CX --  
Justin Stanley & Matthew Brooker, Blue Springs  
Kim Jordan & Amy DeWeese, Blue Springs South  
Kellie Branson & Chris Wilt, Raytown

## DUO --

Jennifer Graebner & Tyler Dustin, Raymore-Peculiar  
Roger Barbieri & Tim Fendler, Kansas City-Rockhurst  
OO --  
Jessica Bernard, Blue Springs South  
Chris Leake, Kansas City-Rockhurst  
USX --  
Jason Osborn, Blue Springs South  
Chris Elders, Raytown South  
FX --  
Kyle Farmer, Raytown  
Kellie Branson, Raytown  
DI --  
Tim Fendler, Kansas City-Rockhurst  
Neil Hatton, Blue Springs South  
Tyler Dustin, Raymore-Peculiar  
HI --  
Roger Barbieri, Kansas City-Rockhurst  
Ben Stevens, Raymore-Peculiar  
LD --  
Chris Elders, Raytown South  
Cherie Beaver, Raymore-Peculiar  
Kelly Caldwell, Blue Springs  
Plaque -- Blue Springs South  
Trophy -- Lee's Summit

## New York State

CX --  
Jay Marks & James Wilson, Lakeland  
Jonathan Monten & Brian Maloney, Lakeland  
DUO --  
John B. Ryan & Jason Summers, Iona Prep.  
C. Ryan Joyce & Liam Dall, Iona Prep.  
OO --  
John Sudol, Iona Prep.  
Kelly Bolen, Pleasantville  
USX --  
Jonathan Schoenfeld, Pleasantville  
Geoffrey Sledge, Pleasantville  
FX --  
Sean Carmody, Pleasantville  
Nicolas Dumont, Scarsdale  
DI --  
Nathan Shaver, Iona Prep.  
Kate Hennessy-Fiske, Albany  
HI --  
Liam Dall, Iona Prep.  
Jason Summers, Iona Prep.  
LD --  
Michelle Carter, Hendrick Hudson  
Allison Leidner, Monticello  
Plaque -- Lakeland  
Trophy -- Iona Prep.

## Iroquois

CX --  
Jessica Barron & Scott Harris, Richfield Springs  
DUO --  
Caitlin Keegan & Eric Weis, Troy, PA  
Stephanie Frommer & Steven Mills, Webster  
OO --  
Yutaka Keogh, Madrid-Waddington  
Andrew Stage, Williamson, PA  
USX --  
Michael Smallwood, Madrid-Waddington  
Yuri Pawluk, Bishop Kearney  
FX --  
Richard Bina, Webster  
Yutaka Keogh, Madrid-Waddington  
DI --  
Kevin Wilber, Athens, PA  
Sara Watkins, Williamson, PA  
HI --  
Brad Balthaser, Troy, PA  
LD --  
John Morrison, McQuaid Jesuit  
Adam Lisy, Webster  
Plaque -- Webster  
Trophy -- Bishop Kearney

## California Coast

CX --  
Whitney Smith & Dee Dee Barber, Los Gatos  
Keith Palfin & Ben Tao, Homestead  
DUO --  
Jennifer Chin & Stephanie Sun, Saratoga  
Andrew Farotte & Ed Luchessi, Bellarmine  
OO --  
A. J. Agcaoli, Bellarmine  
Jack McKenna, Bellarmine  
USX --  
Adam Lauridsen, Bellarmine  
Rajiv Batra, Leland  
FX --  
Sohrab Ghassemi, Bellarmine  
Steve Wilson, Bellarmine

## DI --

Arun Ramachandra, Bellarmine  
Andrew Sun, Bellarmine  
HI --  
Ankur S. Bhatt, Leland  
Dave Mount, Bellarmine  
LD --  
Steve Wilson, Bellarmine  
Jack McKenna, Bellarmine  
Plaque -- Bellarmine  
Trophy -- Monta Vista

## New Jersey

CX --  
Wendy Bozzolasco & Nagarani Ramasubramaniam, Science  
Randy Mitchell & Vishal Vaid, Bergenfield  
DUO --  
Jeanne Fischetti & Ron Lin, Randolph  
Carrie Sullivan & Anita Woolley, Long Branch  
OO --  
Neil Farbman, Randolph  
Antonia Korduba, Montville  
USX --  
Hannah Choi, Montville  
Alexandra Mincovich, Elizabeth  
FX --  
Seth Birnbaum, Montville  
Shannon Thornton, Bridgewater-Raritan  
DI --  
Deidre Deane, Montville  
Danielle Drakes, Long Branch  
HI --  
Tim Girbach, Elizabeth  
Chris Sullivan, Long Branch  
LD --  
Abdul Berete, Bergenfield  
Nadir Joshua, Science  
Hannah Choi, Montville  
Plaque -- Randolph  
Trophy -- Elizabeth

## Florida Sunshine

CX --  
Isaac Ruiz-Carus & Jason Fernandez, Tampa-Jesuit  
Chris Griffin & Ryan Dougherty, Tampa-Jesuit  
DUO --  
Aimee Barth & Tamara Lunardo, Sarasota Riverview  
Shaun Rice & Kendra Treuberg, Gaither  
OO --  
Laura Heine, Lely  
Erica Shah, Sarasota Sarasota Riverview  
USX --  
Joshua M. Koenig, Sarasota Riverview  
Steve B. DeRose, Sarasota Riverview  
FX --  
R. J. Jenkins, Sarasota Riverview  
Suketu Pathak, Sarasota Riverview  
DI --  
Lori E. Marsh, Sarasota Riverview  
Roslyn Hart, Gaither  
HI --  
John Warrenner, Gaither  
Jonathan Eiswerth, Gaither  
LD --  
Wilson Dunlavey, Sarasota Riverview  
Megan Beck, Lely  
Plaque -- Sarasota Riverview  
Trophy -- Gaither

## West Los Angeles

CX --  
Chris MacFarlane & Jesse Dixon, Notre Dame  
Brian Pratt & John Kephart, Notre Dame  
DUO --  
David Ross & Jeff Diner, Cleveland  
Megwynn White & Stacy Endman, Cleveland  
OO --  
Summer Ticas, Cleveland  
Cheryl J. Galindo, Belmont  
USX --  
Melanie Partow, Sherman Oaks Center Enriched Studies  
Jeff Higbie, Bishop Montgomery  
FX --  
Christopher Brooks, Thousand Oaks  
Rak Sam, Sherman Oaks Center Enriched Studies  
DI --  
Noe Corral, Cleveland  
Brian Marinoff, Sherman Oaks Center Enriched Studies  
HI --  
John Michael, Cleveland  
Taerny Kim, L.A.-Marshall

## LD --

Elizabeth Barge, Sherman Oaks Center Enriched Studies  
Ankur Kumar, Harvard-Westlake  
Plaque -- Sherman Oaks Center Enriched Studies  
Trophy -- Sherman Oaks Center Enriched Studies

## Nebraska South

CX --  
Ed Fox & Ellie Lien, Omaha-Westside  
Kelly Shaw & Ashley Boe, Omaha-Westside  
DUO --  
Matthew Jordan & Dyke DeBrie, Elmwood  
Murdock  
Jody Christopherson & J. R. Gould, Millard South  
OO --  
Nicole Grothues, Millard South  
Stephanie Aduloju, Papillion-LaVista  
USX --  
Alicia Hancock, Lincoln East  
Shaun Custard, Elmwood Murdock  
FX --  
Andy Sawatski, Lincoln  
Krishna Rao, Lincoln East  
DI --  
Chris Clementson, Lincoln East  
Jody Christopherson, Millard South  
HI --  
Adam M. Carr, Lincoln East  
J. R. Gould, Millard South  
LD --  
Aaron Hartman, Lincoln Southeast  
Katie Weitz, Omaha-Westside  
Andy Sawatski, Lincoln  
Plaque -- Omaha-Westside  
Trophy -- Bellevue East

## Wind River

CX --  
Thomas Scott & Kayt Nelson, Worland  
Justin Carrell & Shahid Khan, Worland  
DUO --  
Tia Bullock & Joe Plambeck, Cody  
Jerry Hunt & Charles Musgrove, Greybull  
OO --  
Joseph Obermueller, Casper-Natrona  
Scott Close, Greybull  
USX --  
Ryan Graham, Rock Springs  
Chris Greller, Laramie  
FX --  
Bill Hill, Rock Springs  
Shahid Khan, Worland  
DI --  
Jenefer Schele, Hot Springs  
Joseph Allen, Casper-Natrona  
HI --  
Jason Kirkmeyer, Casper-Natrona  
Devin Sanchez, Casper-Natrona  
LD --  
Chris Greller, Laramie  
Leven Parker, Casper-Natrona  
Joshua Dornier, Evanston  
Plaque -- Casper-Kelly Walsh  
Trophy -- Worland

## Pittsburgh

CX --  
Michael Cerulo & Carl Sammartino, Cathedral Prep.  
Dan Albert & Matthew Madurski, Cathedral Prep.  
DUO --  
Beth Arnold & Carrie Lopuh, Mercer  
Lisa Keehlwetter & Joe Lenzi, Mercer  
OO --  
Gretchen Lucius, Lakeview Christian  
Sheila Krishnan, Upper St. Clair  
USX --  
Romita Mukerjee, Upper St. Clair  
Dan Tobin, Peters Township  
FX --  
Bronya M. Clyde, Riverside  
Nickie Sheehan, Mercer  
DI --  
Heather Stein, Mercer  
Amelia Lorenz, Pine-Richland  
HI --  
Ellyn Ruschak, Peters Township  
Michael Rizzi, Canevin  
LD --  
Paul Schofield, Cathedral Prep.  
Rachael Mamula, North Catholic  
Courtland Longest, Central Catholic  
Plaque -- Cathedral Prep.  
Trophy -- North Hills

**Puget Sound**

CX --  
 Scott Bailey & Whitney Garrison, Mt. Rainier  
 Ben Ewing & Gregor A. Hensrude, Snohomish

DUO --  
 Ian Tooley & Jenny Evenson, Thomas Jefferson  
 John Schilling & Audra D. Dunn, Clover Park

OO --  
 June Mee Kim, Lakeside  
 Samara Mohamed, Kamiak

USX --  
 Nicholas Thomas, Sunnyside  
 Ben Ewing, Snohomish

FX --  
 Scott Bailey, Mt. Rainier  
 Gregor A. Hensrude, Snohomish

DI --  
 Marc Peterson, Mt. Rainier  
 Terra Stewart, Evergreen Jr.

HI --  
 Braden Lamb, Foster  
 Brian Donhauser, Thomas Jefferson

LD --  
 Nicholas Thomas, Sunnyside  
 Michelle Geri, Sehome

Plaque -- Mt. Rainier  
 Trophy -- Mercer Island

**Tarheel East**

CX --  
 Alan M. Hancock & Nicole A. Hess, Northwest  
 Guilford  
 Amy Powell & Claire Ward, Northeastern

DUO --  
 Shana Stovel & Machoon Vance, E. E. Smith  
 Stacey Kiggins & Kari Lewis, Pine Forest

OO --  
 Sara Lucas, Cape Fear  
 Brandon Buskey, Byrd

USX --  
 Charlie St. Clair, Enloe  
 Brandon Buskey, Byrd

FX --  
 Jeff Kucik, Enloe  
 Matthew Chicco, Enloe

DI --  
 Michael Armstrong, Columbia  
 Bradley S. Akin, Leesville Road

HI --  
 Bryan Smith, Pine Forest  
 Eric Kerr, Byrd

LD --  
 Kathy Zeisel, Chapel Hill  
 Allon Kedem, Chapel Hill

Plaque -- Pine Forest  
 Trophy -- Byrd

**Northern Oregon**

CX --  
 Alan Tauber & Todd M. Borden, Tualatin  
 Jakub Nowakowski & Dennis Coons, Clackamas

DUO --  
 Anna Campbell & Lauren Costley, Portland-Lincoln  
 Sabrina Balamwalla & Meghan Kelley, Oregon City

OO --  
 Rebecca Ozeroff, Gresham-Barlow  
 Evan Hansen, Portland-Lincoln

USX --  
 Brian Prue, Canby  
 Joe Shapiro, Beaverton

FX --  
 Aaron Knott, Portland-Lincoln  
 Owen Zahorcak, Tualatin

DI --  
 Mitra Anoushiravani, Rex Putnam  
 Aaron Myers, Canby

HI --  
 Lauree E. Austin, Gresham-Barlow  
 Marissa Isaak, Portland-Lincoln

LD --  
 Aaron Knott, Portland-Lincoln  
 Emily Cordo, Portland-Lincoln

Plaque -- Portland-Lincoln  
 Trophy -- Gresham-Barlow

**Carver-Truman**

CX --  
 Daniel Keaton & Jason Shaver, Neosho  
 Sudeb Dalai & Cristy Morgan, Nevada  
 Denton Thomas & Jared Hoberock, Nevada

DUO --  
 Jenny Homberger & Tobi Olson, Cassville  
 Doug Collins & Daniel Chilton, Billings

USX --  
 Gabe Cook, Neosho  
 Jason Shaver, Neosho

FX --  
 Sudeb Dalai, Nevada  
 Carey Moore, Neosho

DI --  
 Cecelia English, Monett  
 Adam Cook, Seneca

HI --  
 Andrea Berry, Carthage  
 Jason Rauch, Monett

LD --  
 Carey Moore, Neosho  
 Kenneth Burleson, Neosho  
 Tad Stricker, Webb City

Plaque -- Neosho  
 Trophy -- Carthage

**Eastern Washington**

CX --  
 Beth Wiernan & Carolyn Salina, Gonzaga Prep  
 Casey Kelly & Dan Breczinski, Lake City

DUO --  
 Derek Farmer & Jamie E. Moshin, Mead

OO --  
 Sarah Stalon, Mead

USX --  
 Jeffery Hubbard, Mead  
 Dan Williams, Gonzaga Prep

FX --  
 Benjamin F. Voight, Mead  
 Jesse R. Driscoll, Mead

DI --  
 Alli Jester, Lake City  
 Amber Forbes, Mead

HI --  
 Shawn A. Hummell, Mead

LD --  
 Kelly Pratt, North Central  
 Natasha Usai, Central Valley

Plaque -- Gonzaga Prep.  
 Trophy -- Mead

**New England**

CX --  
 David Enrich & Andrew Diamond, Lexington  
 Eli Blatt & Geddes Golay, Lexington

DUO --  
 Jennifer Driscoll & Michael Descoteaux, Milton  
 Sarah Needham & David Sclar, Milton

OO --  
 Abena Asare, Milton  
 Elizabeth Slavkovsky, Shrewsbury

USX --  
 Kate Vogel, Lexington  
 Jay Cox, Milton

FX --  
 Erick Tseng, Milton  
 Andrew Dennington, Acton-Boxborough Reg.

DI --  
 James Tracy, Milton  
 Soraya Freed, Milton

HI --  
 Ben Forkner, Milton  
 Josh Dubin, Milton

LD --  
 Sarah Halpern-Meekin, Manchester  
 Shannah Varon, Needham

Plaque -- Lexington  
 Trophy -- Amhurst

**Ozark**

CX --  
 Drey Cooley & Chris Roberds, Kickapoo  
 Jason Morrow & Ann Bell, Kickapoo  
 Mike Fevury & Karen Eckert, Camdenton

DUO --  
 Alexa Turner & Jennifer Hammons, Nixa  
 Tim Gagnon & Tom Pepe, Springfield-Hillcrest

OO --  
 Aaron Beatty, Nixa  
 Cynthia Phillips, Kickapoo

USX --  
 Michelle Hoffman, Springfield-Glendale  
 Allison Gleghorn, Springfield-Hillcrest

FX --  
 Jason Morrow, Kickapoo  
 John Nickle, Springfield-Central

DI --  
 Tracy Dement, Licking  
 Georgia Merrick, Licking

HI --  
 Tom Pepe, Springfield-Hillcrest  
 Angie Dorrough, Springfield-Parkview

LD --  
 Tim Noonan, II, Springfield-Catholic  
 Josh Redfield, West Plains  
 Angie Dorrough, Springfield-Parkview

Plaque -- Kickapoo  
 Trophy -- Nixa

**Maine**

CX --  
 Grace Schulz & Tara E. Baird, Maranacook

DUO --  
 Erin S. Leddy & Blake McGee, Scarborough

OO --  
 Erin Harker, Monmouth

USX --  
 Sean Carr, Cheverus

FX --  
 John T. Giblin, Brunswick

DI --  
 Hollie Hallett, Bangor

HI --  
 Paul Ruopp, Monmouth

LD --  
 Samuel M.N. Hayes, Brunswick  
 Melissa K. Yates, Brunswick

Plaque -- Brunswick  
 Trophy -- Brunswick

**Southern Nevada**

CX --  
 Pramod Thummala & Harold Trimmer, Bonanza

DUO --  
 Melody Miller & Margaret Sipple, Green Valley  
 Eva Johnson & Tara Riveccio, Advanced  
 Technologies Academy

OO --  
 Miriam Warren, Advanced Technologies  
 Academy  
 Eva Johnson, Advanced Technologies Academy

USX --  
 Miriam Warren, Advanced Technologies  
 Academy  
 Ashley Huffaker, Green Valley

FX --  
 Alisa Nave, Green Valley

HI --  
 Andy Mauer, Clark  
 Krisna Wymore, Clark

DI --  
 Michael Laussade, Clark  
 Daryl Watson, Chaparral

LD --  
 Michael Webster, Chaparral  
 Ashley Huffaker, Green Valley

Plaque -- Green Valley  
 Trophy -- Green Valley

**Rocky Mountain North**

CX --  
 Mike Reid & Matt Schroer, Rocky Mountain  
 Anthony Hessellus & Mariena Mourino, Longmont

DUO --  
 Nick Bode & Trey Bator, Greeley Central  
 Andrew Dalby & Darcey Roberts, Greeley  
 Central

OO --  
 Julie Mulford, Greeley West  
 Audrey Walton, Fairview

USX --  
 Richard Hallquist, Greeley Central  
 Ross Greiner, Niwot

FX --  
 Jeffrey Busby, Standley Lake  
 Morgan Skurkey-Thomas, Steamboat Springs

DI --  
 Jennifer Molter, Fairview  
 Kirk Mortensen, Greeley West

HI --  
 Kevin Johnston, Greeley Central  
 Will Acosta-Trejo, Greeley Central

LD --  
 Ian Myles, Standley Lake  
 Jacob Rosoff, Fort Collins

Plaque -- Standley Lake  
 Trophy -- Fort Collins

**Hole in the Wall**

CX --  
 Steven Lunsford & Kris Phillips, Cheyenne East  
 Gregory B. Berman & Jordinn K. Nelson,  
 Cheyenne Central

DUO --  
 Shawn Grant & Trevor Schmidt, Chadron, NE  
 Cami Slack & Audrey Mathis, Sheridan  
 Drew Patrick & Justin Davis, Torrington

OO --  
 Kristopher Delaney, Cheyenne East  
 Jared Dixon, Cheyenne East  
 Leslie Perkins, Newcastle

USX --  
 Jacob Dell, Spearfish, SD  
 Kara Groskoph, Buffalo  
 Nicole Anslover, North Platte, NE

FX --  
 Steven Lunsford, Cheyenne East  
 Arlette Foy, Alliance, NE

DI --  
 Lisa Geihl, Cheyenne East  
 Jackie Farritor, Alliance, NE  
 James Olsen, Sheridan

HI --  
 Seth Smith, Cheyenne East  
 Justin Stewart, Buffalo

Aaron Odom, Sheridan

LD --  
 Seth Smith, Cheyenne East  
 David Iverson, Buffalo

Plaque -- Cheyenne East  
 Trophy -- Sheridan

**Western Oklahoma**

CX --  
 Katie High & Kyle Harper, Edmond Memorial  
 Lance Cook & J.T. Sherman, Okla City-Heritage  
 Hall  
 Jeremy Dillingham & Jonathan McVay, Edmond  
 North

DUO --  
 Amber Dickinson & Jimmy Dunlop, Norman  
 Christopher Todd & Michael Howell, Putnam City  
 North

OO --  
 Amy Montgomery, Putnam City  
 Barrett Huddleston, Putnam City

USX --  
 Sarah Griswold, Norman  
 Brennan Stice, Alva

FX --  
 Neelesh Nerurkar, Edmond North  
 J. Grant Schofield, Bishop McGuinness  
 Scott Henderson, Norman

DI --  
 Leila Janloo, Putnam City  
 Christopher Todd, Putnam City North

HI --  
 Marshall Vogts, Alva  
 Shawn Coleman, Putnam City

LD --  
 Neelesh Nerurkar, Edmond North  
 Michael Lee, Norman  
 Nina Farnia, Edmond North

Plaque -- Edmond North  
 Trophy -- Alva

**Arizona**

CX --  
 Aaron Walker & Peter Chiarelli, Phoenix  
 Country Day  
 Jonathan Winer & Jessica Burch, Phoenix  
 Country Day

DUO --  
 Dawn Penich & Ryan Richardson, Dobson  
 Emily Seftel & Cory Levine, Shadow Mountain  
 Jeremy Smith & Michael A. Graupmann,  
 Mountain View

OO --  
 William Self, Mountain View  
 Megan Nielsen, Deer Valley  
 Scott Kirschenbaum, Chaparral

USX --  
 William Self, Mountain View  
 Albert Cho, McClintock

FX --  
 John Houshmand-Parsi, McClintock  
 Celina Rameriz, Salpointe-Catholic

DI --  
 Jennifer Hartmann, Red Mountain  
 Sean Clifford, Dobson  
 Shomit Barua, Dobson

HI --  
 David Chorley, Dobson  
 Charisse Gudgalis, Red Mountain  
 Amy Gandomi, Dobson

LD --  
 John Houshmand-Parsi, McClintock  
 Krystal Zell, Corona del Sol  
 Albert Cho, McClintock

Plaque -- Dobson  
 Trophy -- Corona del Sol

**Hoosier Central**

CX --  
 Matt Warner & Tim Leeds, Ben Davis  
 Patty Mulvihill & Amanda Klingerman, Ben Davis

DUO --  
 Joe Dillon & Allison Corn, Logansport  
 Jesse Carson & Ben Johnson, Maconaquah

OO --  
 Jeremy Wallace, Brebeuf Jesuit  
 Nikie Jenkinson, Rossville

USX --  
 Cara Herman, Rossville  
 Patty Mulvihill, Ben Davis  
 Jejo Koola, West Lafayette

FX --  
 Stan Chen, Brebeuf Jesuit  
 Christopher Roberts, Logansport

DI --  
 Cheryl McNally, Wabash-Southwood  
 Paul Porter, Ben Davis

HI --  
 Eddie Conkie, Ben Davis  
 Emily Axel, Rossville

LD --  
 Sonal Bhatia, West Lafayette  
 Jejo Koola, West Lafayette  
 Plaque -- Ben Davis  
 Trophy -- Lafayette Jefferson

### Rocky Mountain South

CX --  
 Amit Ramjani & Rachel Wilsey, Bear Creek  
 Brian Paschall & Dustin Kitson, Bear Creek  
 DUO --  
 Ben Kimball & Nathan Havey, Lakewood  
 Max Anderson & Peter Nestor, Lakewood  
 OO --  
 DeShaun O'Dell, Montbello  
 Amanda Leiker, Moffat County  
 USX --  
 Anne Berry, Denver-Washington  
 Gina Jacobs, Moffat County  
 FX --  
 Jason Lancaster, Eaglecrest  
 Astrid DeRidder, Wheatridge  
 DI --  
 Jess Haviland, Lakewood  
 Chanelle Acheson, Bear Creek  
 HI --  
 Tiffany Lacy, Wheatridge  
 Greg Richardson, Wheatridge  
 LD --  
 Renee Gemi, Golden  
 Mitch Sandoval, Golden  
 Plaque -- Golden  
 Trophy -- Bear Creek

### Southern California

CX --  
 Nicole Eberhardt & Jenny Bastian, University of San Diego  
 Doug Redden & Evan Granowitz, Redlands  
 DUO --  
 Graham Watson & Michael Burton, Redlands  
 Renee Summerfield & Ryan K. Kalama, Redlands  
 OO --  
 Jennifer Quinn, Mount Miguel  
 Graham Watson, Redlands  
 USX --  
 Jeremy Reitz, Hesperia  
 Melissa A. Lowe, Colton  
 FX --  
 Kushal Dave, Mt. Carmel  
 Jordan Becker, Redlands  
 DI --  
 Carlos Franco, Oceanside  
 Danielle Saullo, Mount Miguel  
 HI --  
 Michael E. Davis, Redlands  
 Jason Hoover, Mount Miguel  
 LD --  
 Katie Angliss, Redlands  
 Joseph Ouellet, La Costa Canyon  
 Plaque -- Redlands  
 Trophy -- Redlands

### Southern Wisconsin

CX --  
 Dan Samson & Nicole Serrano, Nicolet  
 Eric Bielke & Jason Keener, Brookfield East  
 DUO --  
 Alicia Bowman & Betsy Thurman, Cedarburg  
 Molly Thompson & Claire Schmidt, Cedarburg  
 OO --  
 Laurel Jahn, Greendale  
 John Vasudevan, Marquette University  
 USX --  
 Chris Wisniewski, Marquette University  
 Wendy Siewert, Sussex-Hamilton  
 FX --  
 Bob Jones, Marquette University  
 Steve Leider, Marquette University  
 DI --  
 LaTrice Martin, Milwaukee HS of the Arts  
 Kirsten Moore, Greendale  
 HI --  
 Ben Schneider, Marquette University  
 Christian Weigert, Marquette University  
 LD --  
 Chris Wisniewski, Marquette University  
 Andrew Owsiak, Marquette University  
 Plaque -- Marquette University  
 Trophy -- West Bend East

### Florida Manatee

CX --  
 Daniel Noto & William Chuang, Suncoast  
 Jeffrey Rapaport & Jayme Mautasch, St. Andrews  
 DUO --  
 Heather Stevens & Steve Torres, Palm Beach School of the Arts  
 Jennifer Sobie & Adam Grabis, University School

OO --  
 Jennifer Sobie, University School  
 Abby Eletz, University School  
 USX --  
 Scott Penner, Suncoast  
 Ashley Keller, University School  
 Marc Levitt, Suncoast  
 FX --  
 Seth Green, J.P. Taravella  
 Joseph Ficocello, Martin County  
 DI --  
 Josh Gad, University School  
 Gabby Bors, Trinity Prep.  
 HI --  
 Jared Weiss, South Plantation  
 Andrew Goldenberg, Stoneman Douglas  
 LD --  
 Melissa Sorbello, Martin County  
 Mahesh Narayanaswamy, Wellington  
 James Weingarten, Palm Beach School of the Arts  
 Plaque -- Palm Beach School of the Arts  
 Trophy -- J.P. Taravella

### Northwest Indiana

CX --  
 Jacob Brenner & Mary B. Williams, Penn  
 Christopher Boudi & David Weck, Munster  
 DUO --  
 Adam Krupp & Joshua Georgen, Plymouth  
 Max Goodman & Kate L. Schoen, Munster  
 OO --  
 Joshua Georgen, Plymouth  
 Elizabeth Kenny, Plymouth  
 USX --  
 David Weck, Munster  
 Melissa Hayes, Plymouth  
 FX --  
 Kavitha Pai, Munster  
 Kunal Shah, Munster  
 DI --  
 Elizabeth Kenny, Plymouth  
 Sarah Fine, Munster  
 HI --  
 Bob Hostetler, Plymouth  
 Katie Schramm, Plymouth  
 LD --  
 Vonetta Logan, Penn  
 Melissa Hayes, Plymouth  
 Plaque -- Munster  
 Trophy -- Plymouth

### Big Valley

CX --  
 George Gianullas & Viviana Barajas, Modesto-Beyer  
 Katie Hillman & Brian Baker, Modesto-Beyer  
 DUO --  
 Anousone Nussaath & Grace Malvar, Stockton-Edison  
 Melissa Fisher & Mary Marshall, Lodi  
 OO --  
 Matthew Harris Stockton-Edison  
 Zeest Khan, Lodi  
 USX --  
 Joshua Wilkerson, Modesto-Beyer  
 Avinash Raina, Stockton-Stagg  
 FX --  
 Heather Torvend, Modesto-Beyer  
 Mike Harris, Turlock  
 DI --  
 Morgan Grunerud, Johansen  
 Matthew Harris, Stockton-Edison  
 HI --  
 Katie O'Ceallaigh, Lodi  
 Grace Malvar, Stockton-Edison  
 LD --  
 Tracey Auerbach, Modesto-Beyer  
 Joshua Wilkerson, Modesto-Beyer  
 Plaque -- Modesto-Beyer  
 Trophy -- Modesto Davis

### Lone Star

CX --  
 Sohail Yousef & Andrew Bradt, The Greenhill School  
 Rashad Hussain & Caitlin Tamadge, The Greenhill School  
 DUO --  
 Brian Pracht & Bryan Sutcliffe, Plano Sr.  
 G. W. Phillips & David Wilson-Brown, Grapevine  
 OO --  
 Christi Shepherd, Grapevine  
 Daniel Evers, South Grand Prairie  
 USX --  
 Heather Hayes, Tyler-Lee  
 Parin Parikh, Plano Sr.  
 FX --  
 Trevon Fuller, Garland  
 Daniel Pastor, Plano-Clark

DI --  
 Michael Washinton, Plano Sr.  
 Shonda Malone, Duncanville  
 HI --  
 Mark Banks, Arlington  
 John Rossi, Duncanville  
 LD --  
 Marc Wallenstein, The Greenhill School  
 Eric Melin, Grapevine  
 Manesh Shah, Duncanville  
 Plaque -- Duncanville  
 Trophy -- Grapevine

### North Texas Longhorn

CX --  
 Stephen Kovatis & John Sanders, Dallas Jesuit  
 Leslie Johnson & Emily Chung, Newman Smith  
 DUO --  
 Lana Woostenhulme & Ryan Short, Vines  
 Chris Cantrell & Missy Archer, Plano East  
 OO --  
 Ramey Ko, Newman Smith  
 Stephen Spruiell, James Martin  
 USX --  
 Leslie Johnson, Newman Smith  
 Andrew Vaden, Newman, Smith  
 FX --  
 Anna Nguyen, Newman Smith  
 Heather Boesch, Colleyville Heritage  
 DI --  
 Amber White, Lewisville  
 Ashlea D. Beach, James Martin  
 HI --  
 Zack Menendez, Newman Smith  
 Sean Fomara, Newman Smith  
 LD --  
 Andrew Vaden, Newman Smith  
 Travis Smith, Colleyville Heritage  
 Plaque -- Newman Smith  
 Trophy --

### North East Indiana

CX --  
 Erika Tarnowski & David Imhof, Chesterton  
 Beth Hake & Kory Twigg, Columbia City  
 DUO --  
 Maria Cipolone & Kyle Eller, Canterbury  
 Ben Hasler & Byron Hayes, Canterbury  
 OO --  
 Maggie Fleck, Chesterton  
 Jason Jones, Fort Northrop  
 USX --  
 Andrew O'Halek, Chesterton  
 Sarah Warrenner, Lakeland  
 FX --  
 Candice Kenney, Chesterton  
 Jeremy Gayed, Huntington North  
 DI --  
 Bree Bristow, Fort Wayne North Side  
 Maggie Fleck, Chesterton  
 HI --  
 Rory McMahan, Chesterton  
 Maria Cipolone, Canterbury  
 LD --  
 Candice Kenney, Chesterton  
 Kristi Brosmer, Chesterton  
 Plaque -- Chesterton  
 Trophy -- Columbia City

### South Carolina

CX --  
 John A'Hern & Patrick Wachter, Columbia  
 Dreher  
 DUO --  
 Emily M. Davidson & James H. Gilmore, Riverside  
 Dee Griffin & Allison Mims, Southside  
 OO --  
 Monica Bell, T. L. Hanna  
 Vorry Neely, Mauldin  
 USX --  
 David Levy, Southside  
 Andrew Barron, Mauldin  
 FX --  
 Nicholas Turza, Mauldin  
 Taylor Larson, T. L. Hanna  
 DI --  
 Lindsay Taylor, T. L. Hanna  
 Allison Mims, Southside  
 HI --  
 Lesley Lindstedt, T. L. Hanna  
 Nathan Spainhour, Westside  
 LD --  
 Allen Colthran, T. L. Hanna  
 Corrie B. Hall, Riverside  
 Plaque -- T. L. Hanna  
 Trophy -- Riverside

### Colorado

CX --  
 Drew Pinkney & Cari Weigel, Heritage  
 Jared Robinson & Tom Devine, Chatfield  
 DUO --  
 Andrea Moore & Josh Miller, Cherry Creek  
 Mark Pergola & Preston Britton, Chatfield  
 OO --  
 Lee Granas, Cherry Creek  
 Melina Coates, Highlands Ranch  
 USX --  
 Kim Victor, Cherry Creek  
 Shaun Harrison, Rangeview  
 FX --  
 David Asarch, Cherry Creek  
 Eric Laudenslager, Cherry Creek  
 DI --  
 Jessica Barnes, Overland  
 Alysa Osogov, Ponderosa  
 HI --  
 Shana Solomon, Overland  
 Scott Severtson, Cherry Creek  
 LD --  
 Adam Buckstein, Cherry Creek  
 James Karbach, Rangeview  
 Rahul Kolhatkar, Cherry Creek  
 Plaque -- Cherry Creek  
 Trophy -- Columbine

### Sierra

CX --  
 Patama Mokaves & David Klein, Garces Memorial  
 Darren Thompson & Kimberly Cates, Bakersfield South  
 Tim Ancheta & Johnny Djordjevic, Bakersfield West  
 DUO --  
 Brandon Weis & Jason DePinto, Clovis  
 Erin Campbell & Emily Gromis, Clovis West  
 OO --  
 Neilinder Ranu, Sanger  
 Paulinder Ranu, Sanger  
 USX --  
 Curtis Pehl, Clovis West  
 Alissa Price, East Bakersfield  
 FX --  
 Danny Meyers, Clovis West  
 Jarrah Euston, Fresno-Bullard  
 DI --  
 Nicole Taylor, Fresno-Hoover  
 Sam R. See, Bakersfield  
 HI --  
 Russell Morris, Clovis  
 Joshua E. Bauer, Bakersfield  
 LD --  
 Ashlee N. Brown, Centennial  
 Ernest Minner, East Bakersfield  
 Courtney Jones, Sanger  
 Plaque -- Centennial  
 Trophy -- Clovis West

### Eastern Oklahoma

CX --  
 Tony Sherbert & Steve Lamar, Broken Arrow  
 Matt Wetmore & Chris Jones, Tulsa Union  
 DUO --  
 Julian Thomas & Melissa Enochs, Tulsa-Washington  
 Staci Bejcek & Bill Scribner, Oologah  
 OO --  
 Amanda Osburn, Miami  
 Katie Edwards, Sapulpa  
 Jo-Leo Carey, Jenks  
 USX --  
 Ajay Gupta, Jenks  
 Jeff Liou, Jenks  
 David McCrary, Tulsa Washington  
 FX --  
 Bryan Nowlin, Cascia Hall  
 Meredith Deaton, Sapulpa  
 Matthew Nirider, Cascia Hall  
 DI --  
 Renee Pitts, Shawnee  
 Victor Latimer, Tulsa Washington  
 Julian Thomas, Tulsa Washington  
 HI --  
 Max L. McKenzie, Pawhuska  
 Melissa Enochs, Tulsa Washington  
 Melanie Eubanks, Stilwell  
 LD --  
 Ajay Gupta, Jenks  
 Jaclyn A. Treat, Bartlesville  
 Jeff Liou, Jenks  
 Plaque -- Tulsa Washington  
 Trophy -- Bartlesville



**Hoosier South**

CX --  
Sam Stephens & Stephen Schaefer, Evansville Mater Dei  
Kelly O'Donnell & Heather Hurt, Evansville North

DUO --  
Andy Watson & David Nagel, Evansville Reitz  
Matt Breivogel & Dan Hoffman, Evansville Reitz

OO --  
John Parker, Evansville Reitz  
Jennifer Barchet, Evansville Reitz

USX --  
Bao Huynh, Evansville Reitz  
Stephen Schaefer, Evansville Mater Dei

FX --  
Ravi Bhatt, Evansville Central  
John Waymire, Perry Meridian

DI --  
Jessica Corbett, Evansville Reitz  
Jennifer Richardt, Evansville Mater Dei

HI --  
John Parker, Evansville Reitz  
Alex Zenthofer, Evansville Mater Dei

LD --  
Jessica Avery, Evansville Reitz  
Jayne Henson, Evansville Reitz

Plaque -- Evansville Reitz  
Trophy -- Lawrence Central

**Mid-Atlantic**

CX --  
Jonathan M. O'Connor & James C. Wilkerson, Prince Edward County

DUO --  
Jessica Smith & Joel Conn, Blacksburg  
Will Smith & Jesame McClellan, Abingdon

OO --  
Andrew Wesbecher, Flint Hill  
Nathan Cook, Abingdon

USX --  
Yoni Schneller, Balcksburg  
Maxwell Smith, Edison

FX --  
Lucas Kline, Blacksburg  
Mathu Subramanian, Whitman

DI --  
Lindsay Reed, Edison  
Autumn Large, Powell Valley

HI --  
Patrick Ryan, Powell Valley  
Will Smith, Abingdon

LD --  
Sarah Richardson, Whitman  
Eric Riggsbee, Edison

Plaque -- Edison  
Trophy -- Blacksburg

**New Mexico**

CX --  
Andrew Morrison & Stefan Chacon, Taos  
Ian Bourland & Jonathan Kimbro, Albuquerque Academy

DUO --  
Becky Gibel & Chris Marianetti, Albuquerque Academy  
Laura Hochla & Nicole Conboy, Albuquerque Academy

OO --  
Rani Waterman, Albuquerque Academy  
Aaron Van Devender, Albuquerque Academy

USX --  
Jessica Bankston, Albuquerque Academy  
Laura Hochla, Albuquerque Academy

FX --  
Henry Huang, Los Alamos  
Jess Hass, Albuquerque Academy

DI --  
Aaron Van Devender, Albuquerque Academy  
Rommell Kahiawat, Armand Hammer United World College

HI --  
Nathan K. Gorelick, La Cueva  
Rani Waterman, Albuquerque Academy

LD --  
Mike Greene, Los Alamos  
Matthew Sullivan, Albuquerque-Highland

Plaque -- Albuquerque Academy  
Trophy -- Albuquerque-Highland

**Greater Illinois**

CX --  
Aaron Winters & Andrew Glennon, Pontiac Township  
Brad Cook & Michael Artime, Belleville West  
Brent Van Hoveln & Kurt Hilgendorf, Pontiac Township

DUO --  
Joe Lappie & Jennifer Oedewaldt, Pekin Community  
Cori Gilbert & Hannah Phillips, Pekin Community  
Danny Rosario & Ozzie Ecford, Carl Schurz

**OO --**

Laura Woelfle, Pekin Community  
Eric Long, Freeport  
Stacy Kelley, Heyworth

USX --  
Laura Woelfle, Pekin Community  
Angela Williamson, Heyworth  
Joe Lajos, Crystal Lake South

**FX --**

Liz Megli, Normal Community  
Sarah McElvain, Heyworth  
Brugh Lower, Heyworth

**DI --**

Joe Lappie, Pekin Community  
Michael Stone, Heyworth  
Amy H. Pennell, Granite City

**HI --**

Brian Girdler, Heyworth  
Cori Gilbert, Pekin Community  
Peter Fiori, Crystal Lake South

**LD --**

Amanda Solomon, Granite City  
Craig Murphy, Granite City  
Sarah Schuaerte, Belleville West

Plaque -- Heyworth  
Trophy -- Pontiac Township

**Southern Colorado**

CX --  
Molly Lawson & Doug Wilson, Doherty  
Todd Hildebrandt & Drew Soderborg, Friuta-Monument

DUO --  
Brad Balof & Janell Hupp, Mitchell  
Amy Monn & Sanjay Hoffman, Durango

OO --  
Jessica Fawcett, La Junta  
Jenni R. Schmidt, Rampart

USX --  
Timothy Wieland, Rampart  
Dan Barbey, Durango

FX --  
Jennifer Cross, Montrose  
Dan Barbey, Durango

DI --  
Sean Briggs, Pueblo Centennial  
Clint Nicholson, Air Academy  
Julie Checketts, La Junta

HI --  
Juliet Duffy, Rampart  
Kristin Gallup, Delta  
Jamie Wintcher, Sierra

LD --  
Gary VanDenBerg, Durango  
Grant Foy, Air Academy

Plaque -- Air Academy  
Trophy -- Rampart

**Flint Hills**

CX --  
Thomas P. Seymour & Matthew Hochstetler, Lawrence  
Rohan Radhakrishna & Neel Ahuja, Washburn Rural  
Monica Balser & Sara Martin, Salina Central

DUO --  
Ambriel Renn-Scanlan & Steve Shaughnessy, Hayden  
Maureen Dobyns & Matt Hastings, Emporia

OO --  
Jennifer Bell, Silver Lake  
Christy M. Hanley, Topeka

USX --  
Hugh R. McCullough IV, Washburn Rural  
Jennifer Bell, Silver Lake

FX --  
Ben S. Lerner, Topeka  
Keith A. Ulmer, Topeka

DI --  
Matt Enderle, Silver Lake  
John C. VanSickle, Topeka

HI --  
Jonathan Tipton, Topeka-Seaman  
David E. DeBrot, Topeka

LD --  
Ben S. Lerner, Topeka  
Keith A. Ulmer, Topeka

Plaque -- Topeka  
Trophy -- Silver Lake

**Hawaii**

CX --  
Aaron Johanson & Valerie Carter, Moanalua  
Kristen J. Jones & Bonnie E. Jacques, Kahuku

DUO --  
Janney Hopkins & Nicole Lim, Kamehameha  
Samuel David & Leah Caldeira, Kamehameha

OO --  
Jason Mossholder, Kaiser  
Anna Swanson, Moanalua

**USX --**

Christian Balazs, University Lab

FX --  
David Shapiro, Punahou

DI --  
Jocelyn Chong, University Lab  
Raymond Lambert, Radford

HI --  
Kinohi Nishikawa, Kamehameha  
Brent Lau, Maryknoll

LD --  
David Shapiro, Punahou  
Zak Stone, Punahou

Plaque -- Iolani  
Trophy -- Kamehameha

**South Florida**

CX --  
David Fisher & Matt Weinshall, Miami Palmetto  
Zac Litton & Walter Leibrich, Miami Killian

DUO --  
Winston Carty & Niurka Davis, North Miami  
Bradley E. Horenstein & Brad Sturges, Miami Palmetto

OO --  
Kelly Rabin, Miami Killian  
Emily Levy, North Miami Beach

USX --  
Leah Garabedian, Miami Palmetto  
Michelle Collins, North Miami Beach

FX --  
Blanca Keyfetz, North Miami Beach  
Alex Gomez, Miami Palmetto

DI --  
Michelle Collins, North Miami Beach  
David Lerner, Miami Palmetto

HI --  
Alexander Eidam, Miami-Southridge  
Chris Ramirez, Southwest Miami

LD --  
Alex Gomez, Miami Palmetto  
Louise Sandberg, Miami Palmetto

Plaque -- Miami Palmetto  
Trophy -- Coral Gables

**Sagebrush**

CX --  
Diana Chai & Megan Hughes, McQueen  
Aaron Sanchez & Alexis Bayer, Douglas

DUO --  
Amy Marble & Scott Hernandez, Reed  
Ashley Callahan & Tara O'Brien, Reno

OO --  
Emily Bassier, Elko  
Mike Berry, McQueen

USX --  
Daniel Paletz, Reno  
Christian Lockwood, Bishop Manogue

FX --  
Alexis Bayer, Douglas  
Jacob Kallman, Douglas

DI --  
Julie Tom, Douglas

HI --  
Lance Whitney, Elko  
Amy Marble, Reed

LD --  
Lindsay Marshall, Wooster  
Emily Bassier, Elko

Plaque -- Douglas  
Trophy -- Reno

**Tall Cotton**

CX --  
Justin Slaughter & Allison Harvey, Odessa  
Permian  
Reagan Butts & Tanya Eustace, Midland Lee

DUO --  
Courtney Warren & Kristen Key, Amarillo  
Kim Trowbridge & Eric Mears, San Angelo Central

OO --  
Hillary Clemens, San Angelo Central  
Cecily Wilkinson, Amarillo Tascosa

USX --  
Craig Stanfield, Cooper  
Megan Ofsowitz, Amarillo

FX --  
Hillary Clemens, San Angelo Central  
Charu Gupta, Midland Lee

DI --  
Megan Ofsowitz, Amarillo  
April Kling, San Angelo Central

HI --  
Erin McCleskey, Cooper  
Kristen Key, Amarillo

LD --  
Eric Mayans, Odessa Permian  
Sarah Horn, Midland Lee

Plaque -- Midland Lee  
Trophy -- Hereford

**Northern Lights**

CX --  
Brandon Lussier & Melissa Benson, Grand Rapids  
Joe Andrasko & Keely Johnson, Grand Rapids

DUO --  
Jennifer Bedard & Mary Suomala, Moorhead  
Lee Fiskness & Nathan Jons, Moorhead

OO --  
Amy Ross, Aitkin  
Adele Johnsen, Chisago Lakes

USX --  
Tim Kimball, Park Rapids  
Jeremy Albright, Barnesville

FX --  
Eric Hoplin, Detroit Lakes  
Emily Bittner, Duluth East

DI --  
Kristi Buchanan, Fosston  
Maria Brenny, Staples  
Amanda Monfroee, Bemidji

HI --  
Joseph Pike, Duluth Denfeld  
Jeremy Henriksen, Grand Rapids

LD --  
David Siders, Duluth East  
Emily Bittner, Duluth East

Plaque -- Grand Rapids  
Trophy -- Duluth East

**Patrick Henry**

CX --  
John Ross & Nick Seim, Cox  
Heather Barnes & Elisabeth Goodwin, Kempsville

DUO --  
Matt Place & Jason Dart, Madison County  
Frank Smith & Josh Dean, Madison County

OO --  
Andrew E. Shtulman, Poquoson

USX --  
Matthew A. McMillan, Hampton Roads Acad.

FX --  
John Ross, Cox

DI --  
D. Craig Gallaer, Poquoson  
Jill Eckenberger, Clover Hill

HI --  
R. Wess Todd, Clover Hill  
Nick Turner, Clover Hill

LD --  
Rachele Dominguez, Great Bridge  
Christy Murphy, Great Bridge

Plaque -- Cox  
Trophy -- Kempsville

**Illini**

CX --  
Kevin Gorman & Jeff Brook, Homewood-Flossmoor

DUO --  
David May & Sabaa Kazi, Wheaton-Warrenville South  
Dana Black & Kristen Tillotsen, Wheaton-Warrenville South

OO --  
Rita Mocek, Downers Grove South  
Olivia Lin, Wheaton-Warrenville South

USX --  
Jennifer Schulp, Homewood-Flossmoor  
Reena Mathew, Downers Grove South

FX --  
James Dunleavy, Carl Sandburg  
Sanjay Sood, Downers Grove South

DI --  
Katie Killackey, Downers Grove South  
Ronnel Taylor, Thornwood

HI --  
Valerie Garcia, Downers Grove South  
Katie Rich, Carl Sandburg

LD --  
Jennifer Moyer, Homewood-Flossmoor

Plaque -- Downers Grove South  
Trophy -- Thornwood

**Central Minnesota**

CX --  
Andrianna Kastanek & Katherine Mayer, Apple Valley  
Harry Niska & Josh Turner, Anoka

DUO --  
Dan Kirkham & Matthew Kaler, Apple Valley  
Brian Moynihan & Julie Hassett, Apple Valley

OO --  
Nathan Koering, Apple Valley  
Anne Gerbensky, Apple Valley

USX --  
Megan Peterson, Forest Lake  
Margaret Luger, Forest Lake

FX --  
Cherian Koshy, Apple Valley

Andrew Cheyne, Forest Lake

DI --  
Helen Pickering, Forest Lake  
Kyle Davies, Apple Valley

HI --  
Jaclyn Fjstad, Apple Valley  
Nathan Koering, Apple Valley

LD --  
Leah Halvorson, Apple Valley  
Amy Lawler, Minneapolis South

Plaque -- Apple Valley  
Trophy -- Forest Lake

#### Michigan

DUO --  
David MacDonald & Jenny Neal, Portage Central

OO --  
Ella Gao, Portage Northern

USX --  
Karen Krajewski, Portage Northern

FX --  
Jon Lamberson, Portage Central

DI --  
Bryan Lukasik, Portage Central  
Clare Sabotta, Kalamazoo Loy Norrix

HI --  
Steve Davy, Battle Creek Northern

LD --  
Alex Kuo, Portage Northern

Plaque -- Portage Northern  
Trophy -- Portage Northern

#### West Kansas

CX --  
Natalie Foster & Patrick Thiessen, Hutchinson  
Ben Walker & Courtney Nunns, Hutchinson  
Erin McLain & Grace Lee, Hutchinson

DUO --  
Chance Mullen & Molly Welch, Garden City  
Sarah Harmon & Ben Lewis, El Dorado

OO --  
Brian Stucky, Moundridge  
Natalie Foster, Hutchinson  
Jennifer Kehler, El Dorado

USX --  
Joel Robben, McPherson  
Josh Carter, Garden City  
Erin McLain, Hutchinson

FX --  
Brian Stucky, Moundridge  
Patrick Thiessen, Hutchinson

DI --  
Amy McCormack, El Dorado  
Grace Lee, Hutchinson  
David Ricke, Great Bend

HI --  
Trent Wagler, Haven  
Chance Mullen, Garden City  
Michael Lane, El Dorado

LD --  
David Ricke, Great Bend  
Idan Ben-Arieh, Manhattan

Plaque -- Hutchinson

Trophy -- Salina South

#### East Los Angeles

CX --  
Al Provinziano & Aurelio Torre, Damien  
Arthur Broadwater & Andrew Sohn, Damien

DUO --  
Paul Atigapramoj & Claire Morales, Rowland  
Keenton Luong & Jenny Guevara, San Gabriel

OO --  
David Chen, Rowland  
Lesley Sacayanan, Rowland

USX --  
Timothy Loose, Schurr  
Julie Lu, Rowland

FX --  
David Green, San Gabriel  
Richard Kim, Polytechnic

DI --  
Nabil Yousef, Rowland  
Julie T. Tran, San Gabriel

HI --  
Grace Kim, Schurr  
Claire Morales, Rowland

LD --  
Mark Mao, San Gabriel  
David Green, San Gabriel

Plaque -- San Gabriel

Trophy -- Schurr

#### Capital Valley

CX --  
Matt MacDonald & Anne MacMullan, C. K. McClatchy  
Gina Hart & Kerri Rollins, Marysville

DUO --

James Morishita & Gabi Farr, Sacramento-Kennedy

OO --  
Maria Long, Highlands  
Sparkle Carlson, Del Norte

USX --  
David Ferguson, Galt

FX --  
Regina Banks, Florin

DI --  
Michael Locher, Sacramento-Kennedy  
Maleha Freidenfelt, Del Norte County

HI --  
Theo Black, Nevada Union  
Sparkle Carlson, Del Norte County

LD --  
Sarah M. Smith, Del Norte County  
Jacob White, Galt

Plaque -- Galt

Trophy -- Galt

#### Northern Wisconsin

CX --  
Eric Kessenich & Srikanth Reddy, Appleton East  
John Graham & Shaun Przybylski, Stevens Point

DUO --  
Angie Eder & Jessica Jensen, Appleton East  
Nicole Johnson & Ben Wood, Eau Claire Memorial

OO --  
Michael Hsu, Appleton East  
Elizabeth Wautlet, Algoma

USX --  
Sridhar Reddy, Appleton East  
Joe Rompala, Menomonie

FX --  
Ryan Billings, Sheboygan South  
Srikanth Reddy, Appleton East

DI --  
Jason Fleming, Eau Claire Memorial  
Bina Ahmad, Appleton East

HI --  
Erick Eiting, Appleton East  
Angie Eder, Appleton East

LD --  
Stephanie A. Draheim, Appleton West  
Chad Richards, Waupaca

Plaque -- Appleton East

Trophy -- Appleton East

#### South Kansas

CX --  
Sarah Gragert & Almas Sayeed, Wichita East  
Michael Chacey & Brian Gough, Derby  
Lea Bishop & Nathaniel Parker, Wichita East

DUO --  
Ian Garner & Melissa Bronnenberg, Caney Valley  
Brenda Haury & Nathan Swank, Valley Center

OO --  
Nicole Childers, Wichita Heights  
Holly A. Morton, Wichita Campus  
Rebekah Dryden, Derby

USX --  
Brook Balentine, Field Kindley  
Beth Hall, Caney Valley  
Lynnette Womack, Wichita Heights

FX --  
Michael Chacey, Derby  
Almas Sayeed, Wichita East  
John R. Burris, Field Kindley

DI --  
Colonsay McPheeters, Valley Center  
Tanisha Jones, Wichita Southeast  
Anitra Evans, Wichita Heights

HI --  
Justin Buoy, Caney Valley  
Ian Garner, Caney Valley  
Joshua L. Dillon, Parsons

LD --  
Lynnette Womack, Wichita Heights  
Chris Clary, Wichita Northwest

Plaque -- Wichita East

Trophy -- Field Kindley

#### East Iowa

CX --  
Ryan Park & Kyle Richardson, Bettendorf  
Lock Reynolds & Jamison Curran, Cedar Rapids Washington

DUO --  
William Freeland & Samantha McCarty, Burlington  
Jamie Moeller & Nick Moriarty, Wilton

OO --  
Jabari K. Woods, Davenport North  
Cyndy Woodhouse, Bettendorf

USX --  
John B. Garner, Muscatine  
Melissa Peterson, Iowa City

FX --

Nathaniel N. Petersen, Davenport West  
Kyle T. McDonald, Muscatine

DI --  
Mary A. Tratchel, Burlington  
Misty Cooperider, Marshalltown

HI --  
David C. Roepke, East Buchanan  
Darcie Hutchison, Iowa City West

LD --  
Craig Rice, Iowa City West  
Melissa Peterson, Iowa City

Plaque -- Burlington & Marshalltown  
Trophy -- Davenport West

#### Southern Minnesota

CX --  
David Prestwood & Nick Stukas, Bloomington  
Jefferson

Douglas Keillor & Renee Kraft, St. Francis  
Katie Mozer & Jannette Swanson, Eagan

DUO --  
Greg Newman & Marsha Smirnov, Eagan  
Jim Sustacek & Travis Henspeter, Marshall

OO --  
Jennifer Nou, Eden Prairie  
Jamie Tschida, Rosemount

USX --  
Katie Mozer, Eagan  
Matt Mittlestadt, Rosemount

FX --  
Paven Malhotra, Bloomington Jefferson  
Megan Ruegg, Eagan

DI --  
Adam Bartley, Eden Prairie  
Josh Mitchell, Eagan

HI --  
Dan Holmay, Eagan  
Anil Hurkadi, Eden Prairie

LD --  
Jake Gelfand, St. Louis Park  
Sage Zaheer, Hopkins  
Maggie Weller, St. Francis

Plaque -- Eagan

Trophy -- Hopkins

#### Heart of Texas

CX --  
Matthew Tiffie & Eric Furbish, Hays  
Thomas Allen & Joshua Clark, Round Rock

DUO --  
Nicole Lowrance & Morgan Dover-Pearl, Westlake  
Geena Doig & Candace Mascari, McNeil

OO --  
Meghan Speetzen, Westwood  
Shannon Sneed, Westlake

USX --  
Jason Fullerton, Round Rock  
Leslie Jacob, Westwood

FX --  
Jane Lee, Midway  
Steven Wilbur, Hays

DI --  
Andrea Gastelum, Westlake  
Elaine Shore, McNeil

HI --  
Andrew Winton, Westlake  
Liz Parrott, Georgetown

LD --  
Jane Lee, Midway  
Janet Lee, Midway

Plaque -- Westwood  
Trophy -- Hays

#### Big Orange

CX --  
Max Lin & Christopher Stephens, Esperanza  
Josh Cohen & Seth Cohen, Esperanza

DUO --  
Kristine Kerry, Esperanza  
Vivian Lu, Esperanza

OO --  
Michael Rochon-Duck, Cypress  
David Lin, Esperanza

USX --  
Kelvin Yu, Esperanza  
Max Lin, Esperanza

FX --  
Yining Chen, Esperanza

DI --  
Wendy Farmer, Anaheim-Western  
Sarah Kim, Cypress

HI --  
Ryan Knowles, La Habra  
Sarah N. Melton, La Habra

LD --  
Matthew Powell, Cypress  
Ryan Knowles, La Habra

Plaque -- Esperanza  
Trophy -- La Habra

#### West Texas

CX --  
Meril Anthes & Humberto Acosta, Montwood  
Martin Anthony & Kevin Campbell, El Paso-Cathedral

DUO --  
Jacob Rodriguez & Leonardo Jasso, Bowie  
Caroline Safi & Frank Rivera, St. Clement's

OO --  
Ashley Lucas, Bowie  
Olivia Garcia, Montwood

USX --  
Alvaro D. Soria, El Paso-Cathedral  
Austen Irrobal, Andress

FX --  
Neil Rhodes, Montwood  
Martin Anthony, El Paso-Cathedral

DI --  
Ashley Lucas, Bowie  
Oscar Esparza, Bowie

HI --  
Samantha Lekkas, Montwood

LD --  
Neil Rhodes, Montwood  
Tony Torres, El Paso-Cathedral

Plaque -- El Paso-Cathedral  
Trophy -- El Paso-Cathedral

#### North Dakota Roughrider

CX --  
Michelle Eaton & Sarah Nathan, Fargo Shanley  
Jeremy Schue & Lindsay Littlefield, Fargo Shanley

DUO --  
Dan Rolle & Mark Harbeck, West Fargo  
Alishia Wurgler & Andrew Huovinen, Mandan

OO --  
Lindsay Littlefield, Fargo Shanley  
Liz Saylor, St. Mary's Central

USX --  
James Fleming, Fargo Shanley  
Kathleen Curtis, Fargo Shanley

FX --  
Michelle Eaton, Fargo Shanley  
Nathan Mercuson, Richardton-Taylor

DI --  
Clint Morgenstern, Beulah  
Jason Lord, Mandan  
Christina Johnson, West Fargo

HI --  
Jason Bernhardt, Richardton-Taylor  
Jason Spencer, Fargo North

LD --  
James Fleming, Fargo Shanley  
Adam Lee, Fargo South

Plaque -- Fargo Shanley

Trophy -- Wahpeton

#### Idaho

CX --  
John Avondet & Lauren Wilkinson, Idaho Falls  
David Eastwood & Ryan Scoville, Centennial  
Alexandra K. Baugher & Joelle S. Hall, Idaho Falls

DUO --  
Sarah Rutan & Corina Berrera, Centennial  
Brant Wadsworth & Ryan Wood, Sugar-Salem

OO --  
Tony Oyola, Shelley  
Sean Parrish, Centennial

USX --  
Rachel Harper, Blackfoot  
Amy Collinge, Centennial

FX --  
Philip Scarborough, Blackfoot  
Sheldon B. Gilbert, Idaho Falls

DI --  
Sarah Rutan, Centennial  
Corina Berrera, Centennial

HI --  
Matthew Davlin, Blackfoot  
Kristen Moore, Centennial

LD --  
Michael Hahn, Idaho Falls  
Marjorie Thormal, Hillcrest

Adam T. Neville, Wood River  
Plaque -- Idaho Falls

Trophy -- Blackfoot

# Congress Honors

## Eastern Ohio

### Senate

\*O Ryan Campbell, Aurora  
\*S Christina Lakatos, Wooster  
P Seth H. Perlman, Canton-GlenOak

### House 1

\*O Katie Ringer, Jackson  
S Tony Niccoli, Stow-Munroe Falls  
P Bryan F. Bertram, Canton-GlenOak

### House 2

\*O Matthew List, Canton-McKinley  
S Jayne Juvan, Stow-Munroe Falls  
P Duane Young, Copley

## West Kansas

### Senate

\*O Matt Thornton, Haven  
\*S Rakhi Patel, El Dorado  
P Mark Cooper, Hays  
P Courtney Nunns, Hutchinson

### House 1

\*O Tom Fowler, Hutchinson  
S Ben Walker, Hutchinson  
P Ben Walker, Hutchinson  
P Vi Nhan Tran, Garden City

### House 2

\*O Steve Gould, McPherson  
S Aaron Dechant, Hutchinson  
P Patrick Thiessen, Hutchinson  
P Chance Mullen, Garden City

## South Kansas

### Senate 1

\*O Brook Balentine, Field Kindley  
\*S John R. Burris, Field Kindley  
P Michael Chacey, Derby  
P Almas Sayeed, Wichita East

### Senate 2

O Royce A. Radcliffe, Wichita Campus  
S Michael Fienen, Independence  
P Catherine R. Bell, Field Kindley

### House 1

\*O Nicole Childers, Wichita Heights  
\*S Kyle A. Wilson, Field Kindley  
P Brian Gough, Derby  
P Sarah Gragert, Wichita East

### House 2

O Nathan Herr, Andover  
S Lisa Paul, Wichita East  
P Katie D. Burrows, Field Kindley

## Western Washington

### Senate

\*O Trevor Zandell, Decatur  
\*S Mitchell Alpert, Auburn  
P Rhonda M. Carter, Federal Way

### House 1

\*O Brian Downing, Decatur  
S Arianne S. Davison, Auburn  
P Stefan Kamola, Auburn

### House 2

\*O Jason Russell, John Rogers  
S David B. Vitale, Puyallup  
P Kyle Stillings, Auburn

## Great Salt Lake

### Senate

\*O Davis Strong, Kearns  
\*S David Hunt, Hunter  
P Davis Strong, Kearns

### House 1

\*O Eric Whittaker, Salt Lake City-Skyline  
S Anthony Gill, Rowland Hall-St. Mark's  
P Bill Allred, Salt Lake City-Skyline

### House 2

\*O Sylvia Orban, Kearns  
S Christopher Von Maack, Rowland Hall-St. Mark's  
P Aaron Benson, Salt Lake City-Skyline

## San Francisco Bay

### Senate

\*O Laura Bull, El Molino  
\*S Jon Schochet, Miramonte

### House

\*O Lauren Osofsky, Miramonte  
\*S Jacob Towery, Miramonte

## Puget Sound

### Senate

\*O Robert M. Smith, Snohomish  
\*S David Kurtze, Foster

### House

\*O Sabrina Weiner, Kamiak  
\*S Geraldine DeRuiter, Mt. Rainier

## California Coast

### Senate

\*O Neil Malhotra, Bellarmine  
\*S Ken Chen, Homestead  
P Ken Chen, Homestead

### House 1

\*O Mark Paustenbach, Bellarmine  
S Vipin Narang, Bellarmine  
P Joshua Kou, Lynbrook

### House 2

\*O David Applegate, Bellarmine  
S Sujay Jaswa, Bellarmine  
P Henry Chuang, Saratoga

## Tarheel East

### Senate

\*O Jeremy Hall, Cape Fear  
\*S Brian Hedgepeth, J. M. Rose  
P Brandon Wills, South View

### House

\*O Elicia Timberlake, Northeast Guilford  
\*S Charles Phaneuf, Enloe  
P Webster Harrison, Enloe

## Maine

### Senate

\*O Anna Vaillancourt, Thornton Academy  
\*S Noah T. Winer, Camden-Rockport  
P Anna Vaillancourt, Thornton Academy

### House

\*O David Cote, Bangor  
\*S Karima Rizk, Lewiston  
P Christopher Turcotte, Lewiston

## Southern Nevada

### Senate

\*O Andy Mauer, Clark  
\*S Aaron Wells, Chaparral  
P Bryan-Paul Honaker, Silverado

### House 1

\*O Nick North, Clark  
S James Barry, Clark  
P Eric Graves, Green Valley

### House 2

\*O Kelly Ireland, Green Valley  
S Stalin Yang, Chaparral  
P Juan Zarceno, Advanced Technical Acad.

## Carver-Truman

### Senate

\*O Tim Dale, Monett  
\*S Sarah Riggs, Joplin  
P Tim Dale, Monett

### House 1

\*O Joey Bradley, Nevada  
S Reggie Bogart, Monett  
P Reggie Bogart, Monett

### House 2

\*O James C. Jordan, Webb City  
S Jason Beckerdite, Neosho  
P Jason Beckerdite, Neosho

## Rocky Mountain-North

### Senate 1

O Jeffrey Busby, Standley Lake  
\*S Sarah Croog, Fairview  
P Jason Potter, Skyline

### Senate 2

O Michelle Franzen, Greeley West  
S Sean Bulthaupt, Skyline  
P Ross Greiner, Niwot

### Senate 2

O Kenny Kendall, Steamboat Springs  
S Jarrod Gavito, Standley Lake  
P Susan Lindahl, Fairview

### Session 2

\*O Mike Reid, Rocky Mountain  
S Jason Brick, Greeley West  
P Stephanie Dabkowski, Skyline

### House 1

O Rudy Garcia Jr, Greeley Central  
S Jennifer Truitt, Skyline  
\*P Nick Bode, Greeley Central

### Session 2

O Emily McCormick, Steamboat Springs  
S Mariena Mourino, Longmont  
P Kim Lambert, Steamboat Springs

### House 2

O Anthony Hesselius, Longmont  
S Lucie Tran, Standley Lake  
P Brian Davies, Greeley Central

## Session 2

O Paul Leavitt, Greeley Central  
S Derek Heumann, Fairview  
P Jordan Austin, Greeley Central

## House 3

### Session 1

O Casey Miller, Skyline  
S Neha Mahajan, Fairview  
P Julie Hinton, Skyline

### Session 2

O James Wyatt, Greeley Central  
S Joseph Martinez, Greeley West  
P Brant Jaouen, Greeley Central

## Colorado

### Senate 1

\*O Kobie Bowles, Cherry Creek  
S Stephanie Geriali, Mullen  
P Jennifer A. Hassman, Columbine  
P Andrea C. Montez, Gateway

### Senate 2

\*O Jon Japha, Cherry Creek  
S Kate Cunningham, Overland  
P Kate Cunningham, Overland  
P Ben Goldstein, Columbine

### House 1

\*O Rachel Pepper, Cherry Creek  
S Alex Adamson, Mullen  
P Christine A. Connolly, Columbine  
P Matthew Bailey, Chatfield

### House 2

\*O Jason Freedman, Cherry Creek  
S Carolyn Kamau, Overland  
P Carolyn Kamau, Overland  
P Shaun Harrison, Rangeview

## East Kansas

### Senate

\*O Lisa Williams, Shawnee Mission South  
\*S Kyle Handley, Shawnee Mission Northwest  
P Ace Craig, Sumner Academy

### House 1

\*O Joe Walberg, Bishop Miege  
S Joe Jarvis, Shawnee Mission Northwest  
P Elizabeth Blake, Shawnee Mission Northwest

### House 2

\*O Lindsay Abernethy, Bishop Miege  
S Jeff Simms, Shawnee Mission Northwest  
P Jeff Simms, Shawnee Mission Northwest

## South Carolina

### Senate 1

\*O Daya Nathan, Southside  
S Melissa Jones, Mauldin  
P Daya Nathan, Southside

### Senate 2

\*O Sharon Panelo, Spring Valley  
S Danny Cooper, Mauldin  
P Danny Cooper, Mauldin  
P Joey Harris, Richland Northeast

### House 1

\*O Lucas Hitt, Mauldin  
S Bryan F. Wilson, Richland Northeast  
P Jason Clayton, T. L. Hanna

### House 2

\*O Shaneice Broadus, Southside  
S Eric Kamont, Mauldin  
P Ann H. Hsu, Riverside

## Show Me

### Senate 1

\*O Justin Kalwei, Raytown South  
\*S Andrew Renken, Raytown  
P Chris Wilt, Raytown

### Senate 2

O Laurie Stites, Lee's Summit  
S Vinita Kumar, Raytown  
P Laurie Stites, Lee's Summit

### House 1

\* Laurie Stites, Lee's Summit  
O Carrie Shuchart, Pembroke Hill  
S Clint Hall, Lee's Summit  
P Chris Elders, Raytown South

### House 2

\* Ben Stevens, Raymore-Peculiar  
O Sean Williams, Blue Springs  
S Katherine Allen, The Barstow  
P Sean Williams, Blue Springs

## Nebraska South

### Senate

\*O Joseph E. Elsasser, Millard South  
\*S Lea Kalamaja, Omaha-Mercy  
P Matt Johns, Ralston

## House 1

\*O Katherine Phillips, Ralston  
\*S Adam Astley, Bellevue East  
P Adam Astley, Bellevue East

## House 2

O Andy Sawatski, Lincoln  
S Karianne Sis, Bellevue East  
P Roger Saad, Omaha-Westside

## Greater Illinois

### Senate

\*O Andy Cowell, Red Bud  
\*S Eric Long, Freeport  
P Liz Megli, Normal Community

### House

\*O Ben Harber, Paxton-Buckley-Loda  
\*S Stacy Kelley, Heyworth  
P Taurja Ruch, Normal Community

## Hoosier Central

### Senate

\*O Brooks Cannon, Ben Davis  
\*S Matthew D. Ridings, Brebeuf Jesuit  
P Adam E. Gotway, Brebeuf Jesuit

### House 1

\*O Ricky Price, Ben Davis  
\*S Gabe Rosenberg, Brebeuf Jesuit  
P Jeremy Wallace, Brebeuf Jesuit

### House 2

O Anya Harshey, Ben Davis  
S Katie Stepp, Ben Davis  
P David W. Kralik, Brebeuf Jesuit

## Ozark

### Senate

\*O Jordan Heinz, Springfield-Parkview  
\*S Todd Katter, Springfield-Hillcrest  
P Heather Barbre, Springfield-Glendale

### House

\*O Eleni Tsolakis, Springfield-Parkview  
\*S James Rone, Springfield-Glendale  
P John Nickle, Springfield-Central

## Pittsburgh

### Senate 1

\*O Charles Strauss, Bethel Park  
S Veronica Finkelstein, Fox Chapel  
P Charles Strauss, Bethel Park

### Senate 2

\*O Mark Beres, Baldwin-Whitehall  
S Jillian E. Meggett, Oakland Catholic  
P Grant Hutchings, Bethel Park

### House 1

\*O Kirsten Gray, Upper St. Clair  
S Jennifer Stoltz, North Hills  
P Kirsten Gray, Upper St. Clair

### House 2

\*O Michael Bummer, North Catholic  
S Eric Zenz, Bethel Park  
P Debra Lam, North Hills

## New York City

### Senate

\*O Bradford Short, Loyola School  
\*S Cindy Parrino, St. Joseph Hill Academy

### House

\*O Jarrett Taubman, Syosset  
\*S Aimee Schultz, Bronx HS of Science

## South Oregon

### Senate

\*O Abraham Adams, Eagle Point  
\*S Robert Slaughter, Sheldon  
P Adam Sexton, Ashland

### House 1

\*O Thomas Johnson, North Valley  
S Krys Harris-McCants, Ashland  
P Krys Harris-McCants, Ashland

### House 2

\*O Jason Proett, North Medford  
S Tara Anderson, Ashland  
P Jason Proett, North Medford

## Arizona

### Senate

\*O Joseph Ashby, Dobson  
\* Matt Zuckerman, Deer Valley  
S John Houshmand-Parsi, McClintock

### House 1

O Albert Cho, McClintock  
\*S Ashwini Sagar, Corona del Sol

### House 2

\*O Rob Hart, Dobson  
S William Oldham, Buena

**Florida Manatee****Senate**

- \* Ashley Keller, University
- \* Sean Weiner, Nova

**House**

- \* Doug Rosenbloom, Nova
- \* David Karp, South Plantation

**Southern Wisconsin****Senate**

- \* O Jon Wolkomir, Brookfield East
- \* S Jason Chapman, Nicolet
- \* Jason Chapman, Nicolet

**House**

- \* O Peter Klein, Nicolet
- \* S Ali Nikseresht, Nicolet
- \* P Ali Nikseresht, Nicolet

**Rocky Mountain South****Senate 1 PM**

- \* Devin O' Toole, Lakewood
- O Amanda Leiker, Moffat County
- S Anne Berry, Denver-Washington
- P Kathryn Nonas, Lakewood

**Senate 1 AM**

- O Shannon Chambers, Eaglecrest
- S Jason Dennee, Arvada
- \* P Eric Mosier, Lakewood

**Senate 2 PM**

- O Ren Bucholz, Golden
- S Zephariah Shapp, Lakewood
- P Peter Nestor, Lakewood

**Senate 2 AM**

- O Christina Stehle, Moffat County
- S Quentin Wheeler-Bell, Denver-East
- P Taylor Kiessig, Denver-Washington

**Senate 3 PM**

- O Katie Tiernan, Lakewood
- S Kim Kasubke, Wheatridge
- P Michael Osgood, Golden

**Senate 3 AM**

- O Justin Croft, D'Evelyn
- S Justin Shinn, Moffat County
- P James Christopherson, Arvada West

**House 1 PM**

- \* Andrea Lanterman, Golden
- O Gina Jacobs, Moffat County
- S Debbie Wan, Golden
- P Amit Ramjani, Bear Creek

**House 1 AM**

- O Emily Brooks, Eaglecrest
- \* S James O'Reilly, Golden
- P Margie Sant, Golden

**House 2 PM**

- O Cynthia G. Kinnan, Golden
- S Aaron Back, Denver-Washington
- P Joe Cascio, Golden

**House 2 AM**

- O Ted Burke, Golden
- S Elizabeth Buck, Bear Creek
- P Shane Turner, Golden

**House 3 PM**

- O Kim Tate, Eaglecrest
- S Jennifer Larson, Lakewood
- P John Meyer, Lakewood

**House 3 AM**

- O Jason Lancaster, Eaglecrest
- S Catherine Haggett, Evergreen
- P Randy Navarro, Eaglecrest

**New Mexico****Senate**

- \* O Miguel Fernandez, Rio Grande
- \* S Christy Barber, Albuquerque-Valley
- P Miguel Fernandez, Rio Grande

**House 1**

- \* O Ramon R. Y. Vigil, Taos
- S Emily Johns, Highland
- P Ramon R. Y. Vigil, Taos

**House 2**

- \* O Storey Clayton, Albuquerque Academy
- S Anwar Kaelin, Taos
- P Anwar Kaelin, Taos

**Hoolier South****Senate**

- \* O Matt DeBoard, Perry Meridian
- \* S Alisha Gaddis, Evansville Reitz
- P Ravi Bhatt, Evansville Central

**House 1**

- \* O Stephanie Rose, Evansville Reitz
- S Paul Musgrave, Evansville Reitz
- P Rob Shrode, Evansville North

**House 2**

- \* O Mike LoPrete, Evansville Central
- S Nick Gladden, Perry Meridian
- P Nicholas Stadtmiller, Perry Meridian

**Eastern Washington****Senate**

- \* O Kenneth Sawle, Central Valley
- \* S Patty Waite, Shadle Park
- P Kenneth Sawle, Central Valley

**House 1**

- \* O Bill Schroeder, Gonzaga Prep.
- S Randy Cooper, Lake City, ID
- P Bill Schroeder, Gonzaga Prep.

**House 2**

- \* O Scott Peters, Shadle Park
- S Chris Erickson, Gonzaga Prep.
- P Dan Williams, Gonzaga Prep.

**East Texas****Senate**

- \* O Stephen Myers, Klein
- \* S Neil Rajan, Alief Hastings
- P Stephen Myers

**House 1**

- \* S Chad Vance, Spring
- P Chad Vance, Spring

**House 2**

- \* O Justina DePinto, Spring
- P Justina DePinto, Spring

**Northern Oregon****Senate**

- \* O Laura Brown, Lakeridge
- \* S Ilkyu Lee, Tigard
- P Brian Prue, Canby

**House 1**

- \* O Misha Isaak, Portland-Lincoln
- S Ross Stewart, Gresham-Barlow
- P Rebecca Ozeroff, Gresham-Barlow

**House 2**

- \* O Courtney Harding, Clackamas
- S Brian Simmonds, Portland-Lincoln
- P Owen Zahorcak, Tualatin

**Tennessee****Senate**

- \* O Daniel Bond, The Baylor School
- \* S Ashley Alsobrook, Nashville-Overtown
- P Angela Hoover, Franklin

**House**

- \* O Ryan Cantrell, Battle Ground Academy
- \* S Parker Lee, Nashville-Overtown
- P Sam Fischer, Antioch

**Southern Colorado****Senate 1**

- \* O Grant Foy, Air Academy
- S Dan Barbey, Durango
- P Grant Foy, Air Academy
- P Erin Braatz, Woodland Park

**Senate 2**

- \* O Ryan Cameron, Rampart
- S Seth Levine, Durango
- P Regina H. Winters, Sierra
- P Krista Brinkley, Lamar

**House 1**

- \* O Gary VanDenBerg, Durango
- S Jon Moore, Canon City
- P Nathan Bartel, Woodland Park
- P Juliet Duffy, Rampart

**House 2**

- \* O Micah May, Durango
- S Timothy Wieland, Rampart
- P Donna Christi, Rampart
- P Timothy Wieland, Rampart

**South Florida****Senate**

- \* O Gerald Williams, Miami Carol City
- \* S Michael Konig, North Miami Beach
- P Gerald Williams, Miami Carol City

**House 1**

- \* O Hannibal Rosa, Southwest
- S Adriana Midence, Miami Palmetto Sr.
- P Ramya Prakasan, North Miami

**House 2**

- \* O Jennifer Kent, North Miami
- S Uri Horowitz, North Miami Beach
- P Louise Sandberg, Miami Palmetto Sr.

**West Los Angeles****Senate**

- \* O Jacqueline Aboulafia, Sherman Oaks Center
- Enriched Studies
- \* S Jennifer Hall, Arroyo Grande

**House**

- \* O Theodore Greene, Loyola
- \* S Christine Choi, Los Angeles-Marshall

**Patrick Henry****House**

- \* O Megan Phifer, Essex
- \* S Michael Maskell, Princess Anne
- P John Geniesse, Cox

**Nebraska****Senate**

- \* O Tamy Burnett, Columbus
- \* S Matt Mohr, Millard West
- P Jennifer Parker, Millard North

**House 1**

- \* O Kiley Kane, Omaha Central
- S Brian Bartels, Kearney
- P Kiley Kane, Omaha Central

**House 2**

- \* O Samuel Kruger, Omaha Central
- S Matt Cox, Norfolk
- P Charles Carlin, Omaha Central

**House 3**

- O Amy Lillis, Kearney
- S Jennifer Steele, Kearney
- P Heather Anderson, Omaha Central

**Sierra****Senate**

- \* O Brigid O'Neil, Bakersfield
- \* S Santosh Gujarathi, Reedley
- P Mike Samouljian, Sanger

**House 1**

- \* O Shannon R. Hochstein, Bakersfield
- S Sean Byrne, Clovis West
- P Ryan A. Leggio, Stockdale

**House 2**

- \* O David C. Bornstein, Bakersfield
- S Steve Atamian, Clovis West
- P David C. Bornstein, Bakersfield

**Northern South Dakota****Senate - Day 1**

- O Mike Redlinger, Watertown
- S Rachel R. Goens, Brookings
- P Michael Doss, Brookings

**Senate - Day 2**

- \* O Karl Hammer, Milbank
- \* S Trevor Mischke, Watertown
- P Michael Doss, Brookings

**House 1**

- \* O Brian Shephard, Watertown
- S Sara Loyd, Brookings
- P Jennifer Nauman, Watertown

**House 2**

- \* O Megan Cahill, Watertown
- S Jeff Vockrodt, Watertown
- P Bobby Saxena, Brookings

**Central Minnesota****Senate**

- \* O Joy Douglas, Park Center
- \* S Terrence Brown, Champlin Park
- P Andrew Cheyne, Forest Lake

**House 1**

- \* O Cherian Koshy, Apple Valley
- \* S Matthew Holker, Apple Valley
- P Margaret Luger, Forest Lake

**House 2**

- O Joshua Huang, Centennial
- P Joshua Huang, Centennial

**Big Valley****Senate**

- \* O Peter Stone, Johansen
- \* S Brady Dewar, Modesto
- P Matthew Harris, Stockton-Edison

**House 1**

- \* O Devin Phillips, Modesto-Downey
- S Christina Stetson, Modesto-Beyer
- P Tracey Auerbach, Modesto-Beyer

**House 2**

- \* O Sarah Spears, Modesto-Beyer
- S Monique Carson, Modesto-Downey
- P Joshua Wilkerson, Modesto-Beyer

**Southern California****Senate**

- \* S Jeff A. Patrick, Colton
- \* S Kabir Singh, La Costa Canyon
- P Daniel Ford, La Costa Canyon

**House 1**

- \* O Rachel M. Salcido, Colton
- S Angel Hossain, Redlands
- P Johnny Vong, Upland

**House 2**

- \* O Michael E. Vines, Redlands
- S Ryan Treff, Colton
- P Melissa A. Lowe, Colton

**House 3**

- O Jeni M. Gaskins, Colton
- S Salam I. Rafeedie, Colton
- P Stephanie Patrick, Colton

**Big Orange****Senate**

- \* O Max Lin, Esperanza
- \* S Daniel Catone, Sonora
- P Shane Thoney, Buena Park

**House**

- \* O Aaron Fox, Cypress
- S JannahManansala, Cypress
- P Eric Shen, Brea Olinda

**Flint Hills****Senate 1**

- \* O Mathew Titus, Emporia
- \* S Jonathan C. Allshouse, Washburn Rural
- P Matthew Hochstetler, Lawrence
- P Edward K. Sebellius, Topeka

**Senate 2**

- O Carmen J. Brooks, Topeka
- S Dawn Ma Dechand, Washburn rural
- P Nicole Lindbloom, Topeka West
- P Carmen J. Brooks, Topeka

**House 1**

- \* O John C. Ayres, Washburn Rural
- S Hannah Crabb, Lawrence
- P Thomas P. Seymour, Lawrence
- P Adam J. Obley, Topeka

**House 2**

- \* O Tate P. Flott, Topeka
- S Carlin Williams, Washburn Rural
- P Ryan J. Gigous, Topeka
- P Keith A. Ulmer, Topeka

**North Coast****Senate**

- \* O Clarence Fluker, Shaw
- \* S Ann Averbach, Gilmour Academy
- P Chris Dalton, Midpark

**House**

- \* O Matt O'Brien, Gilmour Academy
- \* S Lowell Fitts, Gilmour Academy
- P Matt O'Brien, Gilmour Academy

**New England****Senate**

- \* O Joshua Stein, Needham
- \* S Jay Haverty, Milton Academy
- P Shannah Varon, Needham

**House**

- \* O Haady Taslim, Needham
- \* S Lauren McDonough, Boston Latin
- P Lauren McDonough, Boston Latin

**Capital Valley****Senate**

- \* Jeffrey Lee, Sacramento-Kennedy
- O Elbert Hardeman, Luther Burbank
- \* S Jacob White, Galt
- P Jacob White, Galt

**House 1**

- O Regina Banks, Florin
- \* S David Ferguson, Galt
- P Steven Chan, Sacramento-Kennedy
- P Regina Banks, Florin
- P Ryan Fong, Sacramento-Kennedy
- P Russell Wyatt, Sacramento-Kennedy

**House 2**

- O John Prichard, Galt
- \* S Stacey Brown, Ponderosa
- P Michael Locher, Sacramento-Kennedy
- P Julia Martin, El Dorado
- P John Prichard, Galt
- P Joanna Lo, Sacramento-Kennedy

**Northern Wisconsin****Senate**

- \* O Charlie Lauters, Hortonville
- \* S Jeff Billings, Sheboygan South
- P Milagros Vitor, Ripon

**House 1**

- \* O Mike Hirschfield, Appleton East
- P Brendan Scherb, Hortonville

**House 2**

- \* O Nick Johnson, Appleton East
- P Wendy Riemann, Sheboygan South

**Southern Minnesota****Senate**

- \* O James Hart, Rosemount
- \* S Karen Sandier, Hopkins

**House 1**

- \* O Andrew Kemp, Rosemount
- S Jeb Middlebrook, Austin

**House 2**

- \* O Heidi Weinzel, Eagan
- S Kimberly Hoffman, Bloomington Jefferson

**Sagebrush****Senate**

- \* O Nicole Buckley, Douglas
- \* S Galen Mitchell, Bishop Manogue

**House 1**

- \* O Daniel Paletz, Reno
- S Ryan Daniels, Reno
- P Ryan Daniels, Reno

**House 2**

- \* O Becky Malquist, Reno
- S Holly Hamperle, Douglas



THE DEPT. OF SPEECH & COMMUNICATION STUDIES AT SAN FRANCISCO STATE UNIVERSITY  
SEEKS A COACH SPECIALIST FOR  
**FORENSICS**

ONE YEAR, FULL TIME APPOINTMENT, FOR 1997-98

**DESCRIPTION:**

1. Direct Forensics Program. Duties include coaching large CEDA Debate and AFA Individual Event Program, AND Scheduling and Travel to Regional and Occasional National Tournaments, AND Budget Preparation and Management.

2. Must be able to teach: SPCH 368: Workshop in Forensics, SPCH 351: Public Speaking, SPCH 365: Argumentation and Debate, and one of the following: SPCH 362: Intro to Oral Interpretation, SPCH 363, Oral Interpretation of the First Person Voice, SPCH 366: Persuasion, SPCH 521: Small Group Discussion.

3. Teaching Load: Three courses per semester with Workshop in Forensics being one of them.

**QUALIFICATIONS:**

Ph.D. or equivalent preferred: ABD or higher required; Experience in College/University Teaching; Experience in Coaching Forensics and in Hosting Forensic Tournaments; Experience in Scheduling Travel and Managing Budgets; Class B Driving License Desired

**APPLICATION PROCESS:**

Closing Date: APRIL 30, 1997 or until position is filled

Send a cover letter, Vitae, Teaching Evaluations and Letters of Reference To:

Dr. Susan B. Shimanoff, Dept. Chair, Speech and Communications Studies, San Francisco State University, 1600 Holloway Ave., San Francisco, CA 94132

**SALARY: \$36,000 (annual)**

SAN FRANCISCO STATE UNIVERSITY IS AN AFFIRMATIVE ACTION/EQUAL OPPORTUNITY EMPLOYER.

POSITION AVAILABLE  
**BELLAIRE HIGH SCHOOL, HOUSTON, TEXAS**

Long-established program with large number of debaters is looking for person committed to forensic education. This program does not participate in workshops/camps/institutes. Coaching requires a person able to teach basic public speaking classes and debate (policy and Lincoln-Douglas). While this position will begin as an assistant coach, the program is looking for someone to assume overall forensic management.

Direct inquiries to:

David Johnson

7014 Fifth St.

Bellaire, Texas 77401

Phone: (Home) 713-663-7798 (Work) 713-295-3739

DEBATE COACH POSITION AT  
**SAN ANTONIO-MACARTHUR HIGH SCHOOL**

Strong program with emphasis on LD, CX and Extemp. MacArthur High School is a member of the Central Texas NFL district under the tutelage of L.D. Naegelin. Our team competes nationally and has the support of an active and supportive booster program. We are due to host our 31st annual tournament. We are looking for an experienced, creative, and energetic person to devote time to a growing program. Please mail resumes to: L.D. Naegelin, Speech/Theatre Arts Prog. Coord., Northeast Ind. School District, Fine Arts, 8961 Tesoro Dr., San Antonio, TX 78217; or call L.D. Naegelin @ 210-804-7142 or Dwayne Scates @ 210-650-1148.

# DISTRICT COMMITTEES

## 1997-98

**Deep South**  
 Marilee Dukes  
 Michele K. Coody  
 James W. Rye, III  
 Laura L. Butler  
 Jane-Marie Gray

**Arizona**  
 Mel Olson  
 James Fountain  
 Diana Krauss  
 Mary M. Howell  
 Mary A. Williams

**Big Orange**  
 Robert Stockton  
 Gregg Munsell  
 Suzanne S. Munsell  
 Lori Brown  
 John Hufferd

**Big Valley**  
 Ron Underwood  
 Tom Montgomery  
 Donovan Cummings  
 Barbara Ann Ferreira  
 Karen Glahn

**California Coast**  
 Shirley Keller-Firestone  
 James Harville  
 Karen Skahill  
 G. L. Hays  
 Kim Jones

**Capitol Valley**  
 Jack Stafford  
 Eric Preston  
 Rita Prichard  
 Roseann Kerby  
 Candis Spallina

**East Los Angeles**  
 Gregory J. Cullen  
 Doug Campbell  
 Chuck Ballingall  
 Christopher Medina  
 Matthew Spitler

**San Fran Bay**  
 Catherine Berman  
 Michael Gonzalez  
 Sandra E. Bird  
 Tommie Lindsey  
 Simon Chiu

**Sierra**  
 Craig A. Austin  
 James Tripp  
 Eric Beckman  
 Don Oberti  
 Jason Ruff

**Southern California**  
 Michael C. Grove  
 Martha L. Kennedy  
 Robert E. DeGroff  
 Myrna Goodwin  
 Sandra Martineau

**West Los Angeles**  
 Jacob Vogler  
 Tracy Lynn Moscoe  
 Neil Barembaum  
 Sarah Rosenberg  
 Ali Taylor

**Colorado**  
 Frank Sferra  
 James R. Chase  
 Jan P. Hart  
 Therese V. Rich  
 Peggy Benedict

**Rocky Mountain North**  
 Martin Lamansky  
 Dianne B. Moeller  
 Glen Cook  
 Greg Brown  
 Rachel Hanson

**Rocky Mountain South**  
 Lowell Sharp  
 Jill I. Grimes  
 Mark D. Onstott  
 Carolyn Williamson  
 Gregory N. Davis

**Southern Colorado**  
 Pauline J. Carochi  
 Carolyn L. Martinez  
 Anthony E. Myers  
 Jerome Duggan  
 David M. Montera

**Florida Manatee**  
 Betsy Walson  
 Dale McCall  
 Lisa Miller  
 Brent Pesola  
 John E. (Eric) Boberg

**Florida Sunshine**  
 Ron Carr  
 Sr. Mary Patricia Plumb  
 Anne L. Broderick  
 Richard Herder  
 Bill Gibron

**South Florida**  
 Francine Berger  
 James T. LaCoste  
 Carlos Guerra  
 Lee Myers  
 Leo J. Williams

**Georgia Northern Mountain**  
 Leslie S. Watkins  
 Gail L. Ingram  
 Carlton Thomas  
 David Philler  
 P. Eric Brannen, Jr.

**Georgia Southern Peach**  
 Richard Bracknell  
 Theodore Carter  
 Donald E. Rhodes  
 John McClellan  
 Philip M. Wertz

**Hawaii**  
 Karen Miyakado  
 Charlotte Boteilho  
 Lynn Levinson  
 Abraham K. Mokunui, Jr.  
 Walter Kahumoku, III

**Idaho**  
 Peggy A. Oliver  
 Leora K. Hansen  
 Wendy Shelman  
 Amy Walker  
 Jason S. LeForgee

**Greater Illinois**  
 Connie J. Link  
 Lauren Morgan  
 Eugene Burnett  
 Fred Vogt  
 Carol Robert Harms

**Illini**  
 John M. Hires  
 Paul Haywood  
 Joseph B. Gerace  
 Cheryl Kozlow  
 Jan Heiteen

**Northern Illinois**  
 Ted W. Belch  
 Linda Oddo  
 Deborah Middleton  
 Matthew Whipple  
 Michael A. Colletti, Sr.

**Hoosier Central**  
 William S. Hicks  
 Susan Richey  
 Pamela Deutsch  
 Ann Christine Stepp  
 Robert S. Deutsch

**Hoosier South**  
 Daniel H. Durbin  
 Bryan Waltz  
 Kimberly D. Giesting  
 John Hall  
 Susan M. Hittson

**North East Indiana**  
 Robert Brittain  
 Lincoln Record  
 Dennis Eller  
 Claryn M. Myers  
 Thomas Joe Pabst

**Northwest Indiana**  
 Daniel Tyree  
 David McKenzie  
 Donald Fortner  
 Kevin E. Ong  
 Mary A. Fridh

**East Iowa**  
 Carol A. Patterson  
 Connie Hoekstra  
 Warren Sprouse  
 Kerri Dole  
 Sandra Bullock

**West Iowa**  
 David Huston  
 James R. Carlson  
 Gregory R. Stevens  
 Michael Miller  
 John Williams

**East Kansas**  
 Cathy C. McNamara  
 Melissa Reynolds  
 A.C. Eley  
 Cindy R. Lyne  
 Patty Grieve

**Kansas Flint Hills**  
 Pamela K. McComas  
 Steven Wood  
 Gail Naylor  
 Leslie Kuhns  
 Cynthia A. Burgett

**South Kansas**  
 Darrel Harbaugh  
 Dalvin R. Yager  
 David Abel  
 Vickie Fellers  
 Linda M. Henry

**West Kansas**  
 Robert A. Chalender  
 Greg Graffman  
 Roger Brannan  
 Shelby McNutt  
 Barbara Watson

**Kentucky**  
 Steve Meadows  
 Stephanie A. Smith  
 Susan Moore  
 Steven A. Smith  
 Virginia Kohl

**Louisiana**  
 Cheryl Gilmore  
 Jimmy Cox  
 Morris Block  
 Judy Hadley  
 Sandra Laborde Broussard

**Maine**  
 Jane McClarie Laughlin  
 Robert J. Hoy  
 Kathleen Schulz  
 Joan M. Macri  
 Joseph Pelletier

**Michigan**  
 Louis C. Price  
 Kathy Mulay  
 James Menchinger  
 Joe L. Kitzman  
 Geoffrey Oakley

**Mid Atlantic**  
 Archie Painter  
 Curtis W. Somers  
 Karen S. Finch  
 Judy L. Seward  
 Edward M. Morris

**Patrick Henry**  
 Larry E. Eakin  
 Kevin Johnson  
 Mary Sue A. Crommelin  
 Monica Wheaton  
 Alexandra B. Katz

**Central Minnesota**  
 Mark Quinlan  
 Deborah Bendix  
 Pam Cady  
 Linda Heinze  
 Joyce Hebert

**Northern Lights**  
 Lee D. Alto  
 Kathy Martin  
 Douglas Johnson  
 Adam Burnside  
 Michael Frickstad

**Southern Minnesota**  
 Robert H. Ihrig  
 Wanda V. Manther  
 Randall Keillor  
 Joni Hanson Anker  
 Gregory P. Dawson

**Mississippi**  
 Betty Whitlock  
 JoAnne Cunningham  
 Dr. Randy Patterson  
 Maggie Smith  
 Anita Boyd

**Carver Truman**  
 Sean Nicewaner  
 David Watkins  
 Elwin Roe  
 Karen Colton-Millsap  
 Marilyn Mann

**Eastern Missouri**  
 Peggy Dersch  
 Randy Pierce  
 Linda C. Dencker  
 Linda S. Box  
 Brenda Bollinger

**Heart of America**  
 Paul Gieringer  
 Donald Crabtree  
 Paul M. Evans  
 Russell Green  
 Trudy K. Kinman

**Ozark**

Teresa E. Sparkman  
Bill Jordan  
LeAnn M. Brazeal  
Calvin Helsley  
Deana Butcher

**Show Me**

Sherri L. Shumaker  
Yvonne Sutter  
Georgia Brady  
Donald Ramsey  
Deborah H. McBride

**Montana**

Anne M. Sullivan  
Tom Cabbage  
Kelly Jorgenson  
Mark Moe  
Laura N. Lowe

**Nebraska**

Fred Robertson  
Kelly S. Crump  
Dan Johnson  
Mark Hawkins  
David W. Witt

**Nebraska South**

Sr. Rosemary Floersch  
John D. Kindler  
Dr. Charles A. Tichy  
Matt Davis  
Tommy Lee Bender

**Sagebrush (Nevada)**

Kimberly Hutchens  
Martin A. Cronin  
Dan Cerquitella  
Wendy Chisholm  
Scott Teachenor

**Southern Nevada**

Sherwin E. Bennes  
Lara Smith  
Karen Vaughan  
Scott Ginger  
Laurie Crawford

**New England**

Randy Cox  
Leslie Phillips  
Timothy C. Averill  
Deborah E. Simon  
Jane Baer-Leighton

**New Jersey**

William Barthelme  
Mary T. Gormley  
Paula Mittleman  
Eileen Waite  
Peter J. Kraus

**New Mexico**

Noel Trujillo  
Gloria O'Shields  
Randall McCutcheon  
Jack Nuzum  
Carol Anderson

**Iroquois**

John Parker  
Jack Smith  
Thomas J. Downs  
Joann Hamm  
Sr. Cecilia Marie

**New York City**

Bro. George Zehnle, SM  
Lydia Esslinger  
Richard B. Sodikow  
James F. X. Lyness, Jr.  
Mary Jane Truckenbrodt

**New York State**

Gregory Varley  
Rose M. Joyce  
Sheryl Kaczmarek  
Charles Sloat  
Theresa Agliardo

**Carolina West**

Randal R. Shaver  
Andrew West  
Joanna Smith  
Amy Huffman  
Jayne Peeler

**Tarheel East**

Jacqueline F. Foote  
Dr. John Woollen  
Catherine D. Johnston  
Michelle Lourcey  
Steven R. Davis

**North Dakota**

Susan L. Anderson  
Dr. Robert Littlefield  
Russ Riehl  
Dan Vainonen  
Yvonne Kalka

**Eastern Ohio**

Diane Swink  
Sharen Althoff  
Debby Warstler  
Todd Casper  
Suzanne E. Theisen

**North Coast**

Robert White  
C. Frederick Snook  
Bonnie O'Leary  
Larry H. Banks  
Gay Janis

**Northern Ohio**

John N. Revezzo  
Diane Mastro-Nard  
Kenneth A. Carano  
Thomas Williams  
Eric Simione

**Western Ohio**

Marjorie Brenizer  
Candis L. Pees  
Elaine M. Daly  
Daniel Matheny  
Lynne M. Bustle

**East Oklahoma**

Jeanne D'Villiers  
Judith McMasters  
Gregg C. Hartney  
Todd A. Murray  
Bill R. Bland

**West Oklahoma**

Glenda Ferguson  
Elizabeth L. Ballard  
Brit McCabe  
Michael Patterson  
Charlene Bradt

**North Oregon**

Wayne Gessford  
Susan B. Davis-McLain  
A. Jane Berry-Eddings  
Robert L. Jones  
Laurie Z. Cooper

**South Oregon**

John S. Tredway  
Kristi A. Sanromani  
Donald W. Lockridge  
Andrew Gottesman  
Daphne Morman-Sturtz

**Pennsylvania**

Glenn R. Cavanaugh  
Janet Robb  
Mary Ann Yoskey-Berty  
Sally M. Finley  
Kathleen O'Halloran

**Pittsburgh**

Peggy Ann Madden  
Alice Joyce Ursin  
Beth Young  
Rev. Raymond Hahn  
Sharon Givens

**Valley Forge**

Edwin M. Kelly  
W. Michael Nailor  
Eleanor R. Langan  
Bro. Gregory Rene Sterner, FSC  
Carl F. Grecco

**South Carolina**

Debra Barron  
Stan Whittle  
Kathy McDaniel  
Gladys Robertson  
Lynda Rothwell

**Northern South Dakota**

Judy Kroll  
Douglas Tschetter  
Richard Mittelstedt  
Mitch Gaffer  
Dorene Nelson

**Rushmore**

Ann Tornberg  
Kim R. Maass  
Steve O'Brien  
David Baumeister, Jr.  
Steve Bartholomew

**Tennessee**

Charles Oakes  
Dr. Jane Eldridge  
William Woods Tate, Jr.  
Harriet L. Medlin  
Lee Ellen Beach

**Central Texas**

L. D. Naegelin  
Kandi King  
Larry W. McCarty  
Elizabeth White  
Sandra D. Schneider

**East Texas**

Roberta Grenfell  
Sammy Green  
Michael B. Thompson  
Cindi H. Saukel  
Mary C. Green

**Gulf Coast**

Janet Doyle  
Charlotte Brown  
R. Scott Allen  
Mark Vanberg  
Rachel G. Torres

**Heart of Texas**

Dixie Waldo  
Thomas Ray  
Shelley B. Tatum  
Sandra Green  
Tina Forehand McKay

**Lone Star**

Barbara Tucker Garner  
Lisa Barnett  
James E. Masters  
Gina Wilkinson  
Pam Lisner

**North Texas Longhorns**

Sandi Shelton  
Lora Bender  
Chris Agee  
Eric W. Porter  
Linda Shasberger

**South Texas**

David Johnson  
Eloise Weisinger  
Kaye Magill  
Margaret Kendrick  
Cheryl V. Ryne

**Tall Cotton**

Ann Shofner  
Connie McKee  
Barbara McCain  
Becky Bell  
Sandra S. Sage

**West Texas**

Mario Maldonado  
Dan Flores  
Teresa M. Candelaria  
Billye Lucas  
Keith W. Townsend

**Great Salt Lake**

Frank A. Langheinrich  
Bonnie Gailey  
Nicole Svee Welch  
Harry B. Davis  
David S. Smith

**Sundance**

Frankie Liston  
Karl Packer  
Dennis R. Edmonds  
Leslie Robinett  
Laurie A. Blake

**Utah Wasatch**

R. Kent Hyer  
Carol Gruski  
Jennifer Nielsen  
Lenina M. Wimmer  
Lori Lee

**Eastern Washington**

Terry Peters  
Penny Johnston  
N. Andre' Cossette  
Sara Johnston  
Christine Haener

**Puget Sound**

Dewain R. Lien  
Lyle A. Jackson  
Christine Corbley  
Brian Schuessler  
Charles Potter

**Western Washington**

Michael W. Burton  
Lois Gorne  
James P. Dorsey  
Carolyn Freudenstein  
Paula Partain

**West Virginia**

Rebecca S. Wiley  
Sandra Bias Linn  
Opal M. Morse  
Thomas Isenhardt

**Northern Wisconsin**

Ronald Steinhurst  
William K. McBride  
David W. Loos  
James Berger  
Michael Traas

**Southern Wisconsin**

Doris J. Sexton  
Steve Sexton  
Carol Hardtke  
Michael Sass  
Mary Knutson

**Hole in the Wall**

Michael E. Starks  
Nick Panopoulos  
Skip Altig  
Randy Lewandowski  
Mary M. Seim

**Wind River**

John Durkee  
D'Arcy Patey  
Teri Robinson  
Michael L. Cummings  
Margaret Gagnon

# NFL'S DISTRICT STANDING

## (April 30, 1997)

Rank	Change	District	Ave. No. Degrees	Leading Chapter	Degrees
1.	--	Northern South Dakota	193.77	Watertown HS	528
2.	--	Rushmore	184.88	Sioux Falls-Lincoln HS	354
3.	--	Northern Ohio	167.20	Austintown-Fitch HS	323
4.	--	Kansas Flint Hills	166.17	Washburn Rural HS	414
5.	+1	East Kansas	158.40	Shawnee Mission Northwest HS	434
6.	-1	Heart of America	152.52	Independence-Truman HS	345
7.	--	Northwest Indiana	152.50	Plymouth HS	400
8.	--	San Fran Bay	147.21	James Logan HS	422
9.	--	West Kansas	142.09	Garden City HS	325
10.	+4	Central Minnesota	140.57	Apple Valley HS	364
11.	-1	Show Me	129.52	Raytown-South HS	259
12.	-1	Northern Illinois	125.55	Glenbrook-North HS	348
13.	+7	Illini	124.31	Downers Grove-South HS	660
14.	-1	Sierra	123.44	Centennial HS	340
15.	-3	South Kansas	122.61	Wichita Heights HS	218
16.	+5	Western Washington	114.16	Auburn Sr. HS	306
17.	-2	Hole in the Wall	113.82	Cheyenne-East HS	253
18.	--	Hoosier South	113.73	Evansville-Reitz HS	601
19.	-2	Florida Manatee	112.85	Nova HS	335
20.	-1	Eastern Ohio	112.13	Stow Munroe Falls HS	270
21.	+1	Nebraska	111.61	Millard-North HS	356
22.	-6	Montana	111.18	Flathead Co. HS	257
23.	+21	Southern Minnesota	111.00	Eagan HS	294
24.	--	New York City	109.57	Bronx HS of Science	359
25.	-2	Great Salt Lake	107.00	Kearns HS	289
26.	-1	Rocky Mountain-South	106.06	Golden HS	289
27.	+14	Big Valley	105.72	Modesto-Beyer HS	328
28.	-1	California Coast	104.64	Bellarmine College Prep.	411
29.	-1	Florida Sunshine	102.30	Academy of the Holy Names	324
30.	-4	Sundance	101.86	Alta HS	268
31.	--	South Florida	98.07	Miami-Palmetto HS	470
32.	-3	Carver-Truman	97.81	Neosho HS	326
33.	-3	Ozark	97.63	Springfield-Hillcrest HS	191
34.	-1	East Texas	94.90	Spring HS	234
35.	+20	South Texas	94.72	Houston-Bellaire HS	286
36.	-1	Wind River	94.52	Casper-Natrona County HS	219
37.	-4	Eastern Missouri	94.45	Pattonville HS	305
38.	+1	Hoosier Central	94.09	Ben Davis HS	392
39.	-3	Colorado	93.05	Cherry Creek HS	400
40.	+11	New Mexico	92.68	Albuquerque Academy	254
41.	+5	Nebraska South	91.81	Millard-South HS	211
42.	-5	Northern Wisconsin	91.80	Appleton-East HS	295
43.	+5	Tall Cotton	91.53	Odessa-Permian HS	154
44.	-12	Sagebrush (Nevada)	91.11	Reno HS	174
45.	+11	Southern Wisconsin	89.92	Greendale HS	191
46.	-4	North East Indiana	89.33	Chesterton HS	396
47.	-9	North Coast	88.84	Gilmour Academy	171
48.	-3	East Los Angeles	88.50	Alhambra HS	167
49.	-9	Southern Nevada	87.33	Green Valley HS	242
50.	-7	New York State	87.21	Newburgh Free Academy	198
51.	-4	Eastern Washington	85.81	Mead HS	280
52.	-4	South Oregon	84.92	Ashland HS	266
53.	-3	Pittsburgh	84.38	Cathedral Prep. School	191
54.	--	Northern Lights	83.57	Moorhead HS	230
55.	-2	Heart of Texas	83.53	Midway HS	168
56.	+1	Southern California	81.29	Redlands HS	233
57.	-5	Idaho	80.68	Centennial HS	168
58.	+1	Rocky Mountain-North	79.11	Greeley Central HS	189
59.	+4	West Iowa	78.20	Bishop Heelan HS	194
60.	+2	Southern Colorado	77.80	Rampart HS	158
61.	-3	Louisiana	77.72	Caddo Magnet HS	215
62.	+3	South Carolina	77.16	Riverside HS	314
63.	+12	North Dakota Roughrider	77.15	Fargo Shanley HS	163
64.	+2	Central Texas	76.72	San Antonio-Churchill HS	252
65.	-4	Utah-Wasatch	76.26	Ogden HS	164



# NFL DISTRICT STANDINGS

Rank	Change	District	Ave. No. Degrees	Leading Chapter	Degrees
66.	+5	Lone Star	75.95	Piano Sr. HS	302
67.	-3	East Oklahoma	75.64	Jenks HS	257
68.	-8	Georgia Northern Mountain	75.61	Westminster Schools	134
69.	-2	New England	74.68	Lexington HS	451
70.	-2	Tennessee	72.58	Montgomery Bell Academy	221
71.	+8	Greater Illinois	70.35	Heyworth HS	166
72.	-3	Tarheel East	70.00	Pine Forest Sr. HS	130
73.	+17	West Texas	69.20	Montwood HS	216
74.	-1	Valley Forge	68.27	Truman HS	185
75.	-3	North Oregon	68.22	Gresham-Barlow HS	160
76.	-6	North Texas Longhorns	68.04	Newman Smith HS	213
77.	-1	Western Ohio	67.63	Centerville HS	254
78.	-4	Deep South	67.50	Vestavia Hills HS	235
79.	-1	West Oklahoma	65.92	Alva HS	253
80.	+7	Arizona	65.67	Dobson HS	164
81.	-1	West Virginia	64.16	Parkersburg South HS	113
82.	-5	Pennsylvania	64.28	Belle Vernon Area HS	106
83.	+9	Mid-Atlantic	62.17	James Madison HS	389
84.	-3	West Los Angeles	61.83	S. O. Center Enriched Studies	230
85.	-2	Kentucky	60.63	Rowan County Sr. HS	188
86.	--	Capitol Valley	60.09	Sacramento-Kennedy HS	173
87.	-3	East Iowa	58.75	Bettendorf HS	147
88.	-6	Maine	58.30	Brunswick HS	122
89.	-4	Carolina West	57.17	Providence HS	133
90.	+8	Big Orange	56.69	Esperanza HS	193
91.	+4	Michigan	56.41	Portage Central HS	201
92.	-1	Gulf Coast	55.75	Gregory-Portland HS	206
93.	-4	New Jersey	54.73	Montville HS	117
94.	-6	Georgia Southern Peach	53.73	Warner Robins HS	106
95.	-2	Iroquois	46.50	Richfield Springs Central HS	92
96.	--	Patrick Henry	46.10	Princess Anne HS	110
97.	-3	Puget Sound	45.61	Kamiak HS	138
98.	-1	Mississippi	41.77	Hattiesburg HS	206
99.	--	Hawaii	29.66	Punahou School	86
100.	--	Alaska	28.50	Robert Service HS	54
101.	--	Guam	17.12	Academy of Our Lady of Guam	45

## Central Texas

CX-- Joseph Tavery & Justine Fisher, San Antonio Lee  
 Jessica Connelly & Rishi Agrawal, Churchill  
 DUO-- Chris Cardenas & Andrew Fenack, Madison  
 Jared Padalecki & Megan Wiley, Madison  
 OO-- Almee Gonzalez, Churchill  
 Leslie Johns, Churchill  
 USX-- Ryan Cunningham, Lee  
 Justine Fisher, Lee  
 FX-- Caleb McDaniel, Clark  
 Dylan Percy, Tom Moore  
 DI-- Abigail Brammell, Churchill  
 Regan Arevalos, Madison  
 HI-- Sean Hall, Madison  
 Michael Mullen, Churchill  
 LD-- Caleb McDaniel, Clark  
 Fred Noyes, MacArthur  
 Plaque--Robert E. Lee  
 Trophy--Robert E. Lee

## Nebraska

CX-- Eric Christenson & Marc Krickbaum, Millard North  
 Nick Lohmeier & Holly Aerts, Millard North  
 DUO-- Rebecca McAndrew & Kit I. Gough, Millard North  
 Jonathan T. Hickerson & Andria M. Jones, Millard North  
 OO-- Jennifer Parker, Millard North  
 Alyssa D. Hoffman, Skutt Catholic

## USX--

Anne Leuschen, Norfolk  
 Adam Remmich, Norfolk  
 FX-- Katie King, Fremont  
 Amy Adkins, Norfolk  
 DI-- Kathy Trvdy, Raymond Central  
 Rachel E. Dixon, Skutt Catholic  
 HI-- John Sautter, Raymond Central  
 Justin Wacker, Raymond Central  
 LD-- Susie Lammers, Fremont  
 Dave Lutz, Millard North  
 Plaque--Millard North  
 Trophy--Kearney  
 Hawaii  
 CX-- Aaron Johanson & Valerie Carter, Moanalua  
 Kristen J. Jones & Bonnie E. Jacques, Kahuku  
 DUO-- Janny Hopkins & Nicole Lim, Kamehameha  
 Samuel David & Leah Caldeira, Kamehameha  
 OO-- Jason Mossholder, Kaiser  
 Anna Swanson, Moanalua  
 USX-- Christian Balazs, University Lab School  
 FX-- David Shapiro, Punahou  
 DI-- Jocelyn Chong, University Lab School  
 Raymond Lambert, Radford  
 HI-- Kinohi Nishikawa, Kamehameha  
 Brent Lau, Maryknoll  
 LD-- David Shapiro, Punahou  
 Zak Stone, Punahou  
 Plaque--Iolani School  
 Trophy--Kamehameha Schools

## Gulf Coast

CX-- Arturo Derryberry & Carlos Lopez, Mercedes  
 Christina Vasquez & Aaron Garza, Mercedes  
 DUO-- Gabriel Cano & Jaime Hernandez, Pharr-San Juan-Alamo North  
 Joe Velez & Ian Caceres, Donna  
 OO-- Hedvig Priimagi, Gregory-Portland  
 Ruben Barrera, Gregory-Portland  
 USX-- Heather Hill, Harlingen South  
 Abby Squires, McAllen  
 FX-- Beth Miller, McAllen  
 Arturo Derryberry, Mercedes  
 DI-- Cris Alonzo, Pharr-San Juan-Alamo  
 Nathan Frailing, Harlingen South  
 HI-- Isabel Garcia, Harlingen South  
 Debbie Mendez, Gregory-Portland  
 LD-- Heather Hill, Harlingen South  
 Abby Squires, McAllen

## East Kansas

CX-- Nathan Dayani & Adam E. Sokoloff, Shawnee  
 Mission East  
 Robert Bankey & Jerome Brouhard, Lansing  
 Randy Umstead & Alex Knapp, Olathe South  
 DUO-- Stephen Cady & Sarah Falls, Olathe South  
 Nathan Jackson & Ra-Keish Roland, Kansas City-Washington  
 OO-- Dorzell King, Jr., Sumner Academy  
 Brandy L. Johnson, Sumner Academy  
 USX-- Craig Pimer, Shawnee Mission West  
 James V. Heaton III, Shawnee Mission North

## FX --

Randy Umstead, Olathe South  
 Cary Berard, Blue Valley  
 DI-- Lindsey Monroe, Shawnee Mission South  
 Anne Bosilevac, Shawnee Mission South  
 HI-- Sarah Bautista, Kansas City-Washington  
 Jackson D. Wells, Pittsburg  
 LD-- Adam Wilcutt, Olathe East  
 Matthew McCall, Shawnee Mission North-west  
 Plaque -- Olathe South  
 Trophy -- Shawnee Mission West  
 South Texas  
 CX -- Andy Lee & Nehal Shah, Bellaire  
 Jeremy Mills & Michael Bruso, Clear Lake  
 Kevin Gordon & Eric Liaw, Bellaire  
 DUO -- Jeff Cusimano & Aaron Garcia, B.F. Terry  
 Jenni Page & Amber Aubrey, Nimitz  
 OO -- Angela Grove, Elkins  
 Jenny Chou, Westfield  
 Jenni Page, Nimitz  
 USX -- Elizabeth Managan, Bellaire  
 Nehal Shah, Bellaire  
 Andy Lee, Bellaire  
 FX -- Susie Gim, Westfield  
 Kevin Gordon, Bellaire  
 Cathy Tran, St. Agnes Academy  
 DI -- Sonya Green, B.F. Terry  
 Jay Brannan, B.F. Terry  
 HI -- Jeff Cusimano, B.F. Terry  
 Mark Dixon, B.F. Terry  
 LD -- Elizabeth Durham, Klein Oak  
 James Shead, Friendswood  
 Jenny Chou, Westfield

## Congress Honors

### Rushmore

#### Senate

- \*O Angela Powers, Sioux Falls O'Gorman
- \*S Angela Aman, Yankton
- P Paul Leistra, Sioux Falls Washington

#### House 1

- \*O Kristen Knudson, Sioux Falls Lincoln
- S Lesley Kandaras, Rapid City Stevens
- P Crystal Kozel, Sioux Falls Washington

#### House 2

- \*O Megan Rohrer, Sioux Falls Lincoln
- S Heather Edmunds, Sioux Falls Washington
- P Jessica Yarnall, Sioux Falls Washington

### West Texas

#### Senate

- \*O Meril Anthes, Montwood
- \*S Martin Anthony, El Paso-Cathedral

#### House

- \*O Humberto Acosta, Montwood
- \*S Tony Torres, El Paso-Cathedral

### Mid-Atlantic

#### Senate

- \*O Ryan McDaniel, W. T. Woodson
- \*S David Kirby, W. T. Woodson
- P Tony Murray, Blacksburg

#### House

- \*O Thomas Lentz, Blacksburg
- \*S Rahul Sinha, Walt Whitman
- P Steven J. Jacob, Centreville

### Eastern Oklahoma

#### Senate

- \*O Shawn Blankenship, Seminole
- \*S Rania Nasreddine, Tulsa Washington
- P David Alexander, Tulsa Washington
- P Shawn Blankenship, Seminole

#### House 1

- \*O Graham Guhl, Jenks
- S Jessica Parker, Sapulpa
- P Katie Edwards, Sapulpa
- P Benjamin J. Fu, Bartlesville

#### House 2

- \*O Tina Tran, Broken Arrow
- S Ted Goodridge, Tulsa Washington
- P Tina Tran, Broken Arrow
- P Ted Goodridge, Tulsa Washington

### Heart of Texas

#### Senate

- \*O Steven Wilbur, Hays
- \*S Shafeeqa Watkins, L.B.J.
- \* Karen Miles, Westlake
- P Steven Wilbur, Hays
- P Jonathan Stinson, McNeil

#### House 1

- \*O Todd Baulch, Hays
- S Jason Fullerton, Round Rock
- P Todd Baulch, Hays
- P Mohammad Siddiqui, San Marcos

### House 2

- \*O Jennifer Kilinski, Granbury
- S Casey Shepard, Midway
- P Jennifer Kilinski, Granbury
- P Casey Shepard, Midway

### Lone Star

#### Senate

- \*O Sean Sellers, Plano-Williams
- \*S Jennifer Cunningham, Plano Sr.

#### House 1

- \*O Christina Worrell, Plano Sr.
- S Andrea Altenberg, Grapevine

#### House 2

- \*O Tammy DeSai, Plano Sr.
- S Jason South, Trinity

### Western Oklahoma

#### Senate

- \* Ruth Hawkins, Alva
- \* Nicole McGarry, Bishop McGuinness

#### House

- \* Osman Siddiq, Norman
- \* Marty Hendrick, Alva

### Central Texas

#### Senate

- \*O Chris Mifflin, Taft
- \*S Aaron Powers, Madison
- P Chris Mifflin, Taft

#### House 1

- \*O Erin Lemkowitz, Clark

- S Fred Noyes, MacArthur
- P Erin Lemkowitz, Clark

#### House 2

- \*O Martin Priest, Madison
- S Steven Smith, Clark
- P Martin Priest, Madison

### Gulf Coast

#### Senate

- \* Clifton Strickler, Corpus Christi King
- \* Gina Magel, Corpus Christi King

#### House

- \* Jon Pepper, Gregory Portland
- \* Christina Ramirez, Gregory Portland

### Idaho

#### Senate

- \*O Douglas J. Crapo, South Fremont
- \*S Tony Ke La Garza, Hillcrest
- P Douglas J. Crapo, South Fremont

#### House

- \*O Ryan Holdway, Centennial
- \*S Tony Lipparelli, Boise
- P Tony Lipparelli, Boise

### South Texas

#### Senate

- \* Paul Jackman, A & M Consolidated
- \* Robert J. Bruce, Houston Jesuit

#### House

- \* Matt Boozer, Lamar Consolidated
- \* David Head, Lamar Consolidated

(Ross from Page 17)

STYLES): Follows protocol. He introduces himself and his teammates to the judges and evaluators and shakes hands. He also does introductions with opposing counsel and includes witnesses. He asks for premarking of exhibits (and "publishing of exhibits if that is needed). He thanks the judge and evaluators at the end. He smiles a lot.

2. Timer (THE DIALS): Keeps time for all presentations and objects when the other side is 30 seconds over.

3. Exhibits (THE FILES): Keeps all copies of exhibits, 5 clean copies of each labeled in folders for:

- a. self
- b. opposition
- c. judge
- d. evaluator
- e. evaluator

(Note: these last two may be used only if we ask the judge to publish to the jury and the judge agrees. In actual trials, the juries are allowed to examine the evidence only later in the jury room. In mock trial, jury deliberation will never happen; so sometimes the judge will allow jurors to handle "published" copies of exhibits. Ask only if you really need the evaluators to see the exhibits up close. You can also remind the judge that mock trial does not allow you to enlarge exhibits or use slides which would make the mate-

rials easy for all to see.) Be sure to retrieve the exhibits at the end of each trial and to refile.

4. Procedural objections (THE WILES): objects whenever the opposition's procedure is faulty. Call bench conferences as necessary. (These often are on account of excessive embellishment--Here's what we do--Noting that all our witnesses are to be completely straight and conservative. They are to stay entirely within their testimony on direct. On cross, when asked about anything not in the testimony, they have liberty to make up just about any answer that helps our side if they stop short of actually making the trial itself seem useless. If the opponents object (on embellishment), explain that the cross examiner forced the witness to make something up since the information requested is not covered in the stipulated facts or his witness testimony, (thus, the questioner opened the door). So we can't be faulted for embellishment. Consider the unfairness of the questioner if we should be penalized for embellishment. Either he gets an answer he likes (which is good for him) or he accuses us of embellishment (which is also good for him). Even if we refuse to answer, he still wins since we look stupid or afraid to say anything. Appeal to the court's sense of fair play--the other guys are the tricky ones--not us.

## All Attorneys

Each attorney (from direct) is responsible for protecting his own witnesses. Each attorney (from cross) is responsible for keeping out undesirable testimony from the witnesses he will cross-examine and will also generally harass the opposition when the time is ripe.

(Mary Donna Ross has coached champion Mock Trial teams at Parkway-Central (MO) H.S. She is co-host of the 1998 St. Louis Nationals.)

(Davis from Page 23)

'substantially' terms in the resolutions, buddy? It's how I can still get into the debate."

"You don't mean--"

"Yes. I now live under the power of the House of T! And everyone knows, we are the only arguments more important than disads. And next thing you know, you'll see me in a kritik."

He smiled as he raised his topicality blocks to return me to dreamland. "Isn't it ironic? One guy with a name you can't pronounce has to die to bring on someone else who can't spell!"

And he dropped his arguments.

(Bill Davis coaches at Blue Valley, (KS) and writes this regular Rostrum column.)



BECAUSE WE'LL RECYCLE OVER 200 MILLION PLASTIC  
BOTTLES THIS YEAR, LANDFILLS CAN BE FILLED WITH OTHER THINGS.  
LIKE LAND, FOR INSTANCE.



We can't make more land. But we can do more to protect what we have. In fact, this year Phillips Petroleum's plastics recycling plant will process over 200 million containers. This effort will help reduce landfill

waste and conserve natural resources. And that will leave another little corner of the world all alone. At Phillips, that's what it means to be The Performance Company.

**PHILLIPS PETROLEUM COMPANY**



*For an annual report on Phillips' health, environmental and safety performance, write to: HES Report, 16 Al PB, Bartlesville, OK 74004, or visit us at [www.phillips66.com](http://www.phillips66.com).*





Phillips Petroleum  
Is the National Sponsor of the  
National Forensic League.

*This publication is made possible by  
Phillips Petroleum Company.*