

ROSTRUM

VOLUME 70

NUMBER 2

OCTOBER 95



PARALYMPIC GAMES COME TO AMERICA

THE REALLY BIG L.D. BLOCK BOOK, VOL. 2

Adds crucial ideas, blocks and case concepts to your L.D. arsenal.

You'll be more knowledgeable and much more successful when you're brainstorming, case writing or competing—if you own the NEW Volume 2. These blocks reflect unusually insightful concepts, examples, organizational suggestions, and evidence sources. The Really Big L.D. Block Book Volume 2 really performs three functions in one:

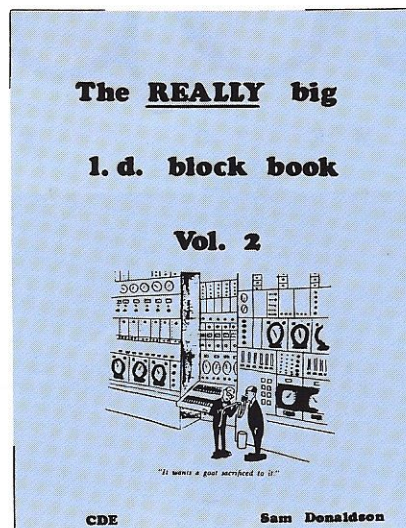
1. Ideas to stimulate your affirmative and negative research.
2. Blocks that suggest approaches that other squads will probably overlook.
3. Evidence and logic that only National Trophyists are used to producing.

Unique blocks make a perfectly balanced research and case aid.

Outstanding quantity: over 300 new blocks in new topic areas and concepts.

Research quality: a remarkable diversity of sources, from philosophy to poetry to underground newspapers to N.S.A. Reports have been consumed for your blocks.

Outstanding thought: Only Sam Donaldson, twice a trophy winner at N.F.L. nationals, could bring you such a winning product.



Cost is \$45.00.

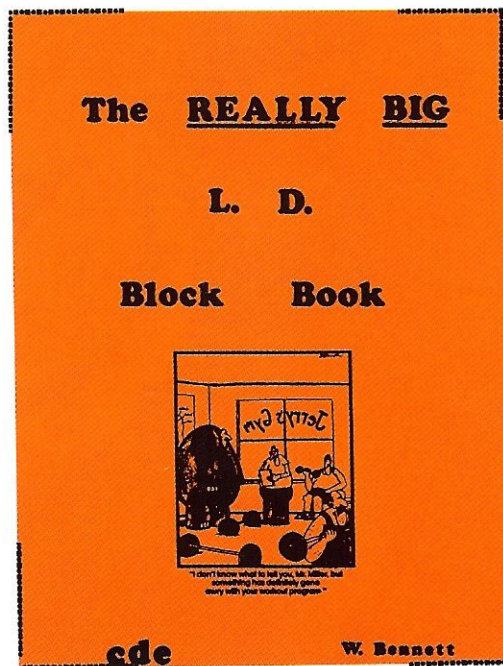
Use order form on back cover.

OWN Your Own L.D. Block Encyclopedia

Here's your choice to own the Lincoln Douglas reference book that every debater needs. It gives you 100s and 100s of blocks on both sides of value issues. You can use the alphabetized index to easily guide you to the blocks that best fit the topic you need help on. AND it's not just evidence cards thrown together. Analysis and examples are integrated throughout the work.

As a reference tool it is unsurpassed. As an insight into philosophy and clash it is invaluable. As a beginning for case writing it is delightful.

Cost: \$45.00. Just use the order form on the outside back of this catalogue.



Mail to: **CDE**, P.O. Box Z, Taos, N.M. 87571
(505) 751-0514

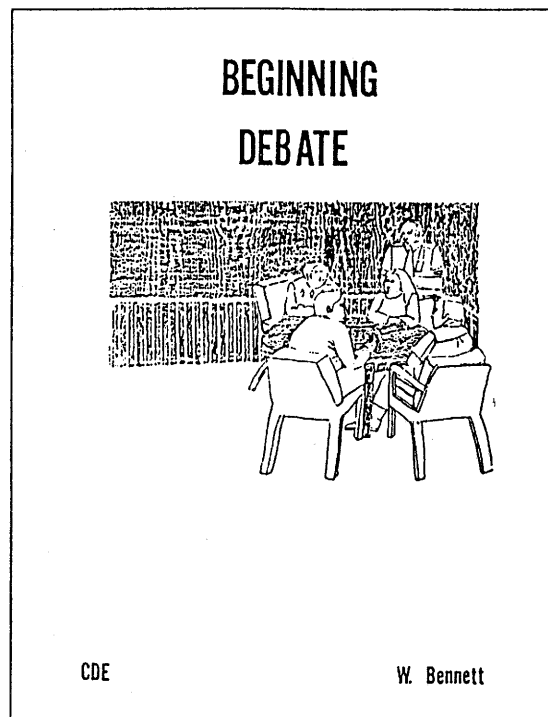


Name _____

Mailing Address _____

☐ LD Block Encyclopedia \$45 ☐ LD Block Book Vol. 2 \$45

Give your debate class the only text that teaches them how to debate. **Beginning Debate.**



You need a textbook that will teach beginners how to debate. Not a book that gives theory or abstractions, but a book that takes novices and educates them in the "how" and "why's" of debate. You need **BEGINNING DEBATE**.

Each of the 13 simple, short chapters starts by telling the student why this concept is important to know and then explains it in easy-to-understand language. **Every chapter** includes numerous drills, games, practice methods, self-tests, discussion questions, and/or critique forms to make sure that your students can take what they read and learn how to use it in their debate rounds.

The text is not tied to any specific topic. You can use this book with any topic. Chapter topics include: Why Debate, Basic Ideas, Rules & Speaker Duties, Research, Writing A Block, Writing a Case, Flowsheeting, Voting Issues, Cross-Examination, Delivery & Ethics, Counterplans.

Written by William Bennett, one of the premier teachers in the United States, this book is guaranteed to be better than the book you are using now.

\$13.00 each on orders of 10 or more (\$19.00 for a single copy). **Free** TEACHER'S GUIDE included with every class order. Available **NOW. ORDER IT TODAY.**

CDE, P.O. Box Z, Taos, NM 87571
(505-751-0514)

"The most versatile classroom textbook for debate"*

DEBATE BOOKS FOR THE CLASSROOM FOR WINNING DEBATE!

Strategic Debate goes beyond developing skills and strategies. It encourages your students to use the critical thinking, organizational, and research skills that will serve them in academic as well as everyday pursuits.

SPECIAL FEATURES OF THIS NEW FIFTH EDITION:

- Expanded material on Lincoln-Douglas debate
- Specialized strategies for the value debater
- Coverage of recent trends in competitive presentation and ethics
- A new section on computer research

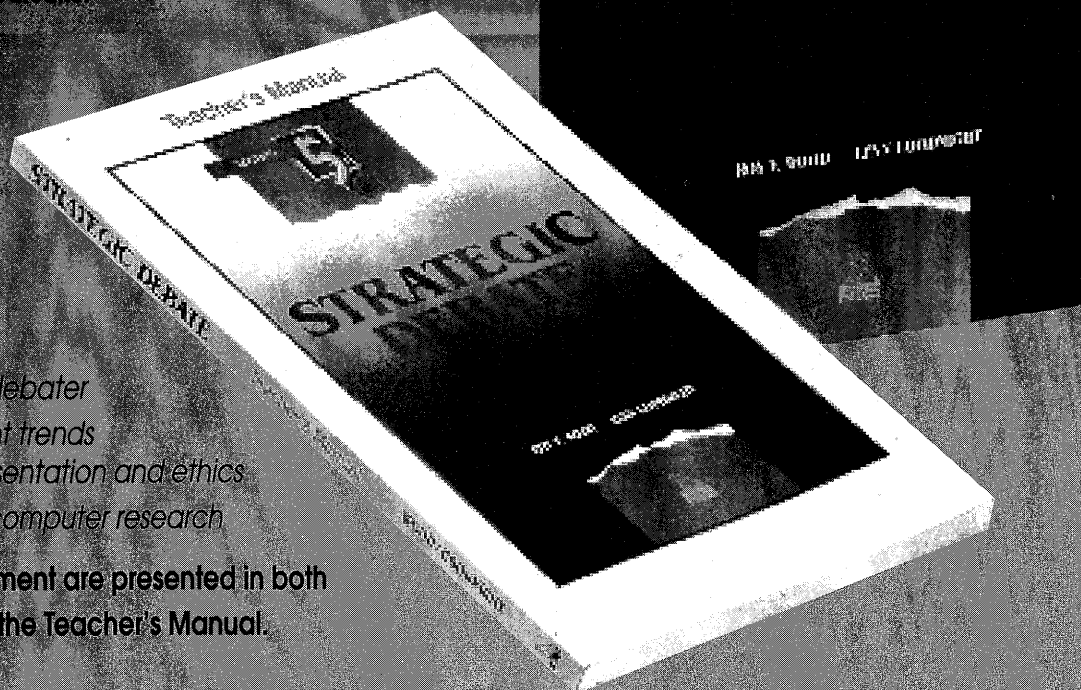
Activities and assessment are presented in both the Student Text and the Teacher's Manual.

STUDENT TEXT:

Hardbound, 6" x 9", 432 pages, #EL5302-2, \$21.95

TEACHER'S MANUAL:

Softbound, 144 pages, #EL5319-7, \$10.95



**"the most versatile classroom textbook for debate must be Strategic Debate...this book is so hot, don't write; instead immediately call 1-800-323-4900."*

U.S. Information — The Weekly Speech and Debate Newsletter



National Textbook Company

a division of NTC Publishing Group

4255 West Touhy Avenue • Lincolnwood, IL 60466-1975

1-800-323-4900 or 1-708-679-5500 • FAX: 1-708-679-2494 • E-mail: NTC PUB2@AOL.COM

Area code changes to 847 after January 20, 1996

AD0757

On the Cover: Athletes at the 1992 Paralympic games and the logo for the 1996 Atlanta Paralympic Games.



This publication is
made possible
by the Phillips
Petroleum Company



Next Month: Focus on Lincoln Douglas Debate.

THE ROSTRUM

Official Publication of the National Forensic League
(USPS 471-180) (ISSN 1073-5526)

Donus D. Roberts, President
William Woods Tate, Vice President
James M. Copeland
Editor and Publisher
P.O. Box 38
Ripon, Wisconsin 54971
(414) 748-6206

The Rostrum (471-180) is published monthly, except July and August each school year by the National Forensic League, 125 Watson St., Ripon, Wisconsin 54971. Second-class postage paid at Ripon, Wisconsin 54971. POSTMASTER: send address changes to THE Rostrum, P.O. Box 38, Ripon, Wisconsin 54971.

SUBSCRIPTION PRICES

Individuals: \$10 one year; \$15 two years. Member Schools \$250 each additional sub.

ATLANTA PARALYMPIC GAMES SPONSOR L/D TOPIC SCHOLARSHIP DEBATES TO BE HELD AT NATIONALS

The September-October L/D debate topic is being sponsored by the Atlanta Paralympic Games, the second largest athletic competition in the world in 1996. APOC has contributed \$2,500 in scholarships to be provided for L/D debaters who will debate the Paralympic Topic in special showcase rounds at the National Tournament. Debaters who qualify to Nationals, and who have prepared and debated the Paralympic topic, will be offered participation in the showcase rounds in order of finish at Nationals.

Modeled upon the Olympic Games, the Paralympics offer opportunities to athletes with disabilities (their term): amputees, people with spinal cord injuries or disease, dwarfs, the blind, people with cerebral palsy, and *les autres* (people with other disabilities like MD, MS, etc).

The Paralympic Games, bigger than the World Series, Super Bowl, or World Cup, will feature 3,500 elite athletes with physical disabilities representing over 100 nations. They will compete in 14 Olympic sports and 4 others. Over 700 events will be held, considerably more than the Olympics' 330 events, because paralympic athletes compete according to degree of disability and functional level.

Yet these athletes are world class and their records compare favorably with Olympic feats:

*Canadian Arnie Boldt, a single-leg amputee, has high-jumped 6 feet, 8 1/2 inches.

*Double-leg amputee Tony Volpentest runs 100 meters in 11.6 seconds, less than two seconds behind Carl Lewis' world record set during the 1992 Olympics at Barcelona.

*Paraplegic Kim Brownfield bench-presses 602 pounds; the world record is 677 pounds.

*Visually impaired swimmer Trischa Zorn missed making the 1992 Olympic team by one-one-hundredth of a second.

The 1996 Paralympic Games are a rallying point for about 49 million Americans with disabilities, 19% of the population!

The games will have a dramatic impact by highlighting the possibilities of athletic competition for the disabled and the need for providing access to competition. According to the U.S. Department of Education, some 95 percent of children with disabilities attending mainstream, public schools have absolutely no access to physical education or recreational sports. "That's a huge number of children who don't have the same access to exercise or sports as their able-bodied counterparts," said APOC spokesperson Lisa Cape. "You can take a child with any type of disability, and that child can look at a person who has a disability excelling at the games and say 'Well, if he or she can do that, what can I do with my life?'"

The Atlanta Paralympic Games plan to leave a legacy to America's disabled children. "Our hope," says Lisa Cape "would be to leave some sort of foundation or really well-endowed organization to promote sports or fitness center construction for these kids, not limited to league sports or competition like those that take place at the Paralympic Games."

The Paralympics will draw about 1 million spectators during the 10 days of games (August 16 - 25).

By sponsoring an NFL L/D Debate Topic, the Paralympic committee hopes to generate public awareness and appreciation for the abilities of people with disabilities. NFL is proud to help.

SEPTEMBER - OCTOBER L/D TOPIC

(SPONSORED BY THE ATLANTA PARALYMPIC GAMES)

Resolved: That individuals with disabilities ought to be afforded the same athletic competition opportunities as able-bodied athletes.

(1996-7 Policy Debate Ballot on Page 8)

(November - December L/D Topic on Page 10)

The Rostrum provides an open forum for the forensic community. The opinions expressed by contributors to the Rostrum are their own and not necessarily the opinions of the National Forensic League, its officers or members. The National Forensic League does not recommend or endorse advertised products and services unless offered directly from the NFL office.

AMERICA EAGERLY AWAITS '96 PARALYMPIC GAMES

Cisco Jeter had everything going his way. He was popular, handsome, articulate and the best all-around athlete in his town, excelling at football, baseball, lacrosse and wrestling. In 1988 when he was only 20 years old, Jeter suffered a spinal cord injury which left him paralyzed from the waist down. Today, Cisco Jeter remains popular, handsome, articulate and the best all-around athlete in his town.

Jeter is a Paralympic athlete. He is currently in training for the 1996 Atlanta Paralympic Games which will take place, Aug. 16-25 1996, at many of the same venues as the Centennial Olympics. His concentration is on wheelchair events, races over 100, 200, 400, 800 and 1,500 meters. He won a gold medal in the 4x100-meter event at the 1992 Barcelona Paralympics and added a bronze for 800 meters.

"The Paralympics, to me, means overcoming adversity," says Jeter. "It means doing your best among elite competition. To be out there performing in front of packed stands is a great thrill, the same for us as it is for Olympic athletes. To compete in the Paralympics means you're one of the best in the world in your event. We do not want sympathy...We just want to be recognized for the things we can do, same as Carl Lewis does, or Gwen Torrence, or Flo-Jo. The meaning is the same."

Jeter is one of some 3,500 elite athletes with physical disabilities who will compete in the 1996 Atlanta games. Already, 112 countries have been confirmed to participate, meaning the '96 games will be the largest in the event's history.

"Our goal is to give these elite athletes a real Olympic experience," says Andy Fleming, president and chief executive officer of the Atlanta Paralympic Organizing Committee. "We will provide the best possible facilities and venues and make our games an unforgettable experience not only the athletes but for all who are involved. Also, we will leave a worldwide legacy of accessibility and change-of-attitude for people with disabilities in this epic event which transcends sport and, indeed, is a great human rights movement."

The '96 games will feature such athletes as Tony Volpentest, born without hands or feet, who through use of prosthetics runs 100 meters in 11.63 seconds; Kim Brownfield, a paraplegic who bench-presses over 600 pounds, and blind swimmer Trischa Zorn, who missed making the 1992 United States Olympic team by just one-one-hundredths of a second.

Opening ceremonies will take place in the new Olympic Stadium, Aug. 16, as the games are held in their entirety for the first time in the U.S.

History

The Paralympic Games were born of the vision of Sir Ludwig Guttman, an English neurosurgeon at Stoke-Mandeville Hospital in Aylesbury, England, in 1948 when he organized the International Wheelchair Games to coincide with the 1948 London Olympics. This first effort was symbolic; a deliberate attempt to connect the Olympics and the Paralympics was not made again until 1960, when the first Paralympic Games were held in Rome, a few weeks after the 1960 Olympics. The first years, only wheelchair athletes competed.

Four hundred athletes from 23 countries joined together on that glorious day in Rome. The Paralympic Movement was created, and Sir Guttman was saluted by Pope Paul XXIII, who declared, "You are the de Copubertin of the paralyzed." Since then, the two events have shared cities four times (Tokyo 1968, Seoul 1988, Barcelona 1992, Atlanta 1996) and countries three times (Germany 1972, Canada 1976 and United States 1984). The Xth Paralympiad will be celebrated in Atlanta in 1996.

As the Paralympic Movement grew, other classes of athletes began to participate, including amputees, the blind and those with cerebral palsy. In 1982, the international Coordinating Committee of World Sports Organizations for the Disabled (ICC) was established as a counterpart to the International Olympic Committee, with four international federations under its umbrella:

>Cerebral Palsy International Sports and Recreation Association (CP-ISRA)

>International Blind Sports Association (IBSA)

>International Stoke-Mandeville Wheelchair Sports Federation (ISMSF)

>International Sports Organization for the Disabled (ISOD) -- governs amputees as well as les autres, athletes with a variety of other disabilities, including dwarf athletes.

In 1992, the ICC was restructured and had become the International Paralympic Committee (IPC).

Classification

"And the winner of the 100 meter is..." This is a phrase you will hear often when the Atlanta Paralympic Games take place 12 days after the Olympics in 1996.

While Olympic medalists in each event are distinguished by sex, i.e., women's 400m, men's high jump, etc., the Paralympics have more than one set of medalists in each event. In the Paralympic Games, each athlete is classified according to disability. The classification of athletes is a complex and huge undertaking, one that Paralympic organizers must tackle before the 3,000 world-class athletes arrive in Atlanta.

The purpose of the classification system is to evaluate athletes by disability and functional ability. The system strives to fairly place athletes in their competitive sport against athletes who are equal.

Grant Peacock, senior program director of sports and logistics, explains, "The Paralympics are for the athletes, therefore we try to make this process as easy as possible. Our goal is to have 95-100 percent of the athletes classified before they come to Atlanta."

Now, how easy is this? First of all, the Paralympics involve athletes representing four international federations: the blind, paraplegics and quadriplegics, people with cerebral palsy, amputees and others (including dwarfs). This alone creates four more categories than the Olympics. But this

is not the end. Each of these categories is broken down further. In total, where the Olympics have approximately 330 different sporting events, the Paralympics have 700.

Medical classification is the first step in dividing athletes into competitive units. Medical doctors and therapists verify the minimum disability and other related factors. Athletes are then looked at from a functional standpoint. A team of sports and medical professionals evaluate basic levels of functional ability such as balance, coordina-

tion, gross and fine motor activities, range of motion, etc. Finally, all athletes are observed in specific sports activities for evaluation of the previously noted functional levels. This allows the evaluator to reconfirm or reconsider previous judgments.

Think of all the quirks encountered during this process. Does a below knee (BK) amputee have an advantage over an above elbow (AE) amputee? Do certain swimming strokes give certain athletes an advantage with their particular

disability? Are there enough competitors with a specific disability to create a given category?

From a Paralympic athlete's standpoint, according to Ann Cody, winner of six medals, "This is the most grueling part of competing in the Paralympics." But with the input of Paralympic athletes like Ann, medical doctors and professionals, and the expertise of Grant Peacock and his staff, the 1996 Paralympics will be the smoothest, most efficient and effective classification process ever.

1996 ATLANTA INTERNATIONAL PARALYMPIC GAMES

August 16 - 28, 1996

Competition	Archery	Individual and team competition, standing and wheelchair competitions, with archers grouped by disability.
	Athletics	Track, throwing, jumping events, cross country, the pentathlon and the marathon. Blind, amputee and paraplegic athletes, and those with cerebral palsy compete in this event.
	Basketball	Played in wheelchairs by paraplegics, amputees and people with polio, with rules similar to the Olympic version.
	Boccia	A game with Italian roots, where the object is to place balls closest to a target ball on a narrow field of play. It is played by athletes with cerebral palsy.
	Cycling	Road racing and trail events are scheduled for three groups of athletes -- those with cerebral palsy, visual impairment and impaired mobility.
	Equestrian	All disabilities are represented in this competition on horseback.
	Fencing	Foil, sabre, and epee events involve athletes in wheelchairs that are fastened to the floor.
	Goalball	This game involves scoring goals at either end of a playing field. The blind athletes are guided by bells located at each goal.
	Judo	The visually-impaired athletes follow the International Judo Federation rules with only slight modifications.
	Lawn Bowls	Similar to boccia, only played on a larger field, this sport involves amputees, wheelchair athletes and those with visual impairments.
	Powerlifting	An open sport limited to the bench press.
	Soccer	A version of soccer played by teams of athletes with varying degrees of cerebral palsy.
	Shooting	Rifle and pistol events in the air-gun and .22 caliber category.
	Swimming	Athletes compete by gender and disability (Blind athletes and those with other disabilities.)
	Table Tennis	The rules are the same as the Olympic Games', with wheelchair and standing competitions.
	Tennis	Similar to conventional tennis, except the ball may bounce twice on the court before being returned. Players compete in men's and women's singles and doubles.
	Volleyball	Two versions, seated and standing, are offered.
Demonstration	Sailing	Athletes of all disabilities will compete in sailing events.

PARALYMPIC TICKET INFORMATION 1-800-818-4715

12TH ANNUAL FLORIDA BLUE KEY SPEECH AND DEBATE TOURNAMENT

presented by

Speakers Bureau

November 10-12, 1995

Team Policy Debate

Lincoln/Douglas Debate

Extemporaneous Speaking

Student Congress

Declamation

Humorous Interpretation

Dramatic Interpretation

Original Oratory

Duo Interpretation

Oral Interpretation

**Pre-Tournament TD/LD
Round Robin**

Supplemental Events

**Institute Scholarship
Competition**

Tournament of Champions
Semis - Team Debate
Quarters - Lincoln/Douglas Debate

Your Hosts:

Florida Blue Key

Florida's Most Prestigious Leadership Honorary

University of Florida

Florida's Flagship University

Gainesville, FL

Money Magazine's #1 Place to Live in America

Earl English
Speakers Bureau Director
Florida Blue Key
312 J. Wayne Reitz Union
Gainesville, FL 32611-2042

FLORIDA BLUE KEY



Phone:: (904) 392-1661
Fax:: (904) 392-7252

CHINA RECONSTRUCTS

by Gregory F. Rehmke

In April I attended an economic development workshop in Beijing sponsored by the Atlas Economic Research Foundation and the Friedrich Naumann Foundation of Germany. Over fifty economists from research institutes around the world attended the four-day workshop. Half were from Chinese research organizations mostly affiliated with Chinese Universities or government agencies, and the other half represented public policy research organizations in the United States, Canada, South America, Europe and India.

The theme of the workshop was China's rapid transition toward a market economy. The lead-off presentation was by Professor Wu Jingian of the State Council Research Center. Professor Wu argued forcefully that China needed to quickly privatize the remaining state-owned industries because they were a significant drag on the economy, lowering productivity and siphoning away hundreds of millions of tax-dollars that could be applied to infrastructure and other modernization efforts.

Virtually all of the Chinese economists giving presentations during the workshop argued for continued and accelerated acceptance of market institutions. During dinner one evening I sat with a young economist from Beijing University who had received his Ph.D. from the University of Chicago. He too argued for a rapid move to freer markets in China. Most surprising to me though was his enthusiasm for the writings of Friedrich Hayek. Hayek was an arch-foe of both communism and socialism, and this young economist from China's most prestigious university said he thought Hayek's classic article "The Use of Knowledge in Society" was one of the best economic

articles ever written.

Another memorable exchange came when I said I thought 100 million farmers could leave their farms and join the light-industrial and service sector. He disagreed, suggesting instead that perhaps 800 million ought to leave agriculture and move to better urban jobs. It does seem silly or perhaps tragic that in this modern world of sophisticated machines and technologies, so many hundreds of millions of Chinese people still plant rice by hand or use archaic tools and machines to harvest their small plots.

Across China endless numbers of new light industrial factories are springing up, whole cities are being constructed from scratch. Room is being made for the hundreds of millions of children of Chinese peasants who will leave the fields in the coming decades, just as the children of American farmers did through the nineteenth and early twentieth centuries.

China is under construction. Not all of it; just most of it. China is reconstructing itself from the outside in. The southern and coastal regions have been booming for over a decade, except for a brief slowdown in the late 1980s. China is in the midst of the greatest construction effort in the history of the world. The numbers are staggering. Shanghai, which before the Communists took over produced half of all China's manufactured goods has recently been allowed to reconstruct itself. *Thousands* of blocks of commercial and residential buildings are under construction (see "Building Binge in China's Biggest City," *New York Times*, April 12, 1995, p. A9) So popular is Shanghai for international corporations looking to expand in China, small apartments are renting for over \$6,000 a month

(*New York Times*, July 9, 1995, p. 4E). An issue of *China Daily* I read while in China casually mentioned, for example, that China is developing 530 deep water ports to facilitate trade. That is a lot of ports and a lot of trade.

My five-day stay in China's now behind-the-times capital, Beijing, gave me only a snapshot of economic reform in China. More useful reports come from those who visit China regularly and can testify to the rapid progress, rising living standards, and improving levels of discussion and communication. On our one-hour ride to the Great Wall in Beilidigen outside Beijing we saw mile after mile of construction projects small and large on both sides of the road. Walking down Beijing streets, one sees huge construction projects lining both sides, in between the huge hotel/office/apartment complexes already in operation. All around though, are the ugly communist-era building-block apartments and uninviting shanty-towns.

I encountered four or five outdoor street markets filled with booths and tables of vegetables, strawberries, sweet potatoes, video and book stores, unrecognizable meats and occasional coal shops, where I waited to see if shoppers would just walk up with wheelbarrows or would toss a few lumps of coal in a plastic shopping bag to carry home. I waited camera in hand to capture a coal purchase on film, but there were no buyers on my watch. A friend from the Atlas Foundation told me that one of her walks through the street markets she saw a vender skinning a dog. And right next to this was another dog just sitting quietly.

Not surprisingly in a huge city too poor to afford gas or electric heating, Beijing suffers (Rehmke to Page 32)

1996 - 7 POLICY DEBATE TOPIC AREA BALLOT

!VOTE IMMEDIATELY!

Rank the areas 1 (preferred) to 5 (not preferred)

Juvenile Crime

_____ Problem Area: How should the federal government reduce juvenile crime in the United States?

*Resolved: That the federal government should establish a program to substantially reduce juvenile crime in the United States.

Discrimination

_____ Problem Area: How should the federal government increase legal protection against discrimination in the United States?

*Resolved: That the federal government should substantially increase legal protection against discrimination in the United States.

Information Superhighway

_____ Problem Area: How should the federal government regulate the information superhighway?

*Resolved: That the federal government should increase restrictions on the use of computer on-line services.

Freedom of Speech

_____ Problem Area: How should the federal government restrict hate speech in the United States?

*Resolved: That the federal government should change restrictions on hate speech in the United States.

Right to Privacy

_____ Problem Area: How should the United States government promote the right to privacy?

Resolved: That the United States government should establish a right to privacy in the workplace.

! VOTE IMMEDIATELY !

MAIL TO: NFL, BOX 38, RIPON, WI 54971

BOOK REVIEW

Strategic Debate (5th Edition) by Roy V. Wood and Lynn Goodnight

This reader has often compared academic debate to the game of chess. The rules and moves can be understood by most. But the sophistication of the activity is limited only by the experience, skills, intelligence, and imagination of those who participate. Debate is so interesting because it is so challenging.

If anyone halfway interested in debate has not seen the 1995 edition (5th edition) of *Strategic Debate* by Roy V. Wood and Lynn Goodnight (National Textbook Company, Lincolnwood, IL), they owe it to themselves to have a look. The new text is a dramatic improvement over the previous edition (1989), and in this reader's view from the standpoint of competition it represents one of the most comprehensive looks at academic debate that anyone might want on the office shelf not to mention in the hands of classroom students. This reader has been familiar with *Strategic Debate* since using it first as a classroom text in 1972 (2nd edition). The 1972 version contained seven chapters - introduction, fundamentals, research, constructives, presentation, refutation, and persuasion (the single-word indicators don't do justice to the more provocative full titles of each chapter, but that's what they were about). By 1989 the chapter number had grown by two to nine - fundamentals, research, affirmative construction, negative construction, presentation, refutation, persuasion, Lincoln-Douglas Debate, and tournaments. The previous introduction chapter was combined with fundamentals, constructives were treated separately as affirmative and negative, and the chapters on Lincoln-Douglas and tournaments were new. By

1989, enough coaches and student debaters were experiencing the need to know about Lincoln-Douglas that any comprehensive debate book needed to include consideration. The tournaments chapter filled an important need to understand that debate as it occurs on any particular weekend is very different from sports and involves more than one long debate (two-days?) in a big auditorium between two teams with thousands watching... (lots of people still think that's what must be happening...).

The 1995 edition is simply the cutting edge on comprehensive treatment of what competitive debate is today while carefully noting at every appropriate point of development from where debate has come. The new text is dramatically longer -- 421 pages versus 336 in the 1989 edition (there were a mere 192 pages in 1972). And the new length serves lots of important purposes. The 1995 *Strategic Debate* includes (new chapters in bold) -- fundamentals, critical thinking, computer research, files and flowing, formats and speaker duties, affirmative construction, affirmative case, negative argumentation, counterplan, cross-examination (the reader's favorite... lots more attention needs to be spent on cross-ex), refutation, Lincoln-Douglas fundamentals, Lincoln-Douglas strategies, persuasion, and tournaments. While the table of contents no longer highlights "debate as a thinking activity" an entire chapter is now devoted to "Logical Argument and Critical Thinking" a treatment missing from previous editions. While it is good to see a chapter on "logic," the only model addressed is Toulmin (as a "version of Aristotle", p. 22). Deduction is

not mentioned as a form of reasoning. The Toulmin Model is offered as "useful for debaters because it is more sensitive to the rules of audience judgment than some other systems of logic." (p. 23). Does that mean audiences use special rules that focus on probabilities or that most audiences have so little training as not to understand structural fallacies?

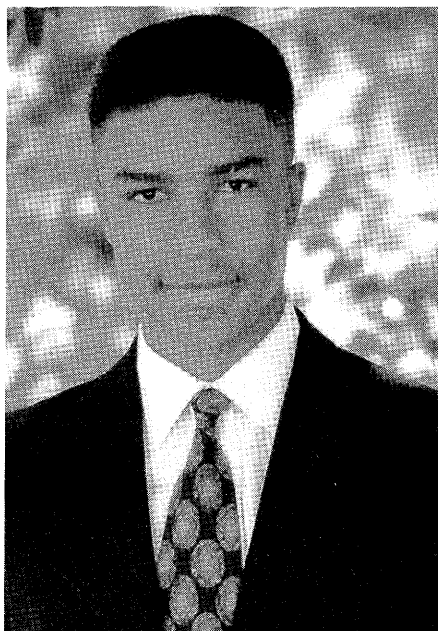
All "old" chapters have been rewritten to include the newest-new, but with important perspective upon history, context and development. Unless today's debaters and coaches understand the development of debate, "adapting" to judges from different areas is just not possible. And judges need to understand the development as well, in order to be effective contemporary officials. The text places strategy into context. The context is interesting. The price of the book is worth page 176 and the photo of the YOUNG stock-issues judge (what goes around comes around). The cosmetics of the book from cover-to-cover are new and impressive. The accompanying *Strategic Debate Teacher's Manual* houses countless valuable learning activities. (Debaters often think that one can't be tested about debate... in any sort of traditional academic way... the teacher's guide will lay that thought to rest).

The most experienced coach will find the book a thoughtful, well-organized, analytic, insightful, truly comprehensive, and tremendously useful look at the strategy and development of competitive academic debate. The beginning coach will find the book to be a bible for survival, a bible of all one needs to know to understand just what he/she had got- (Review to page 32)

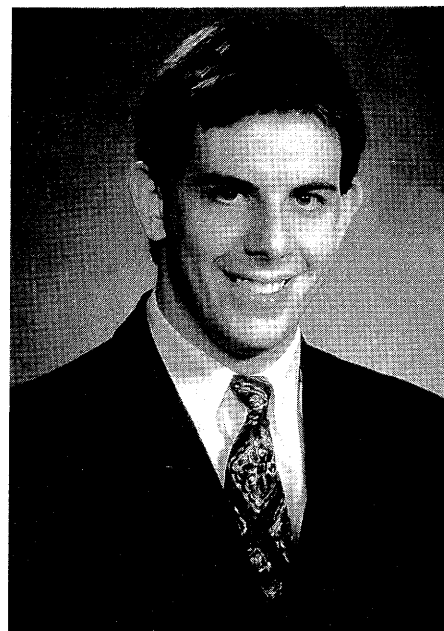
NFL NATIONAL POINT LEADERS



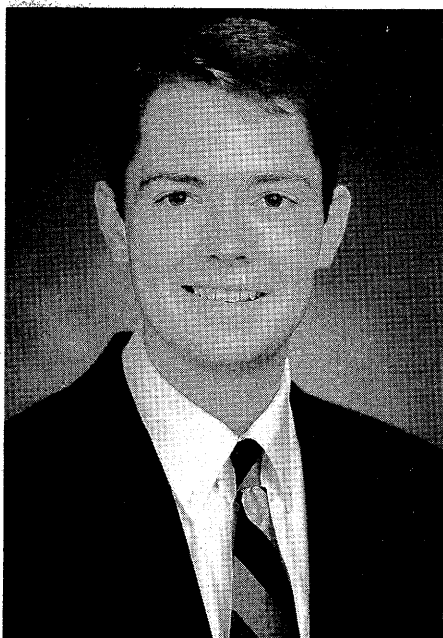
Laura A. Fernandez



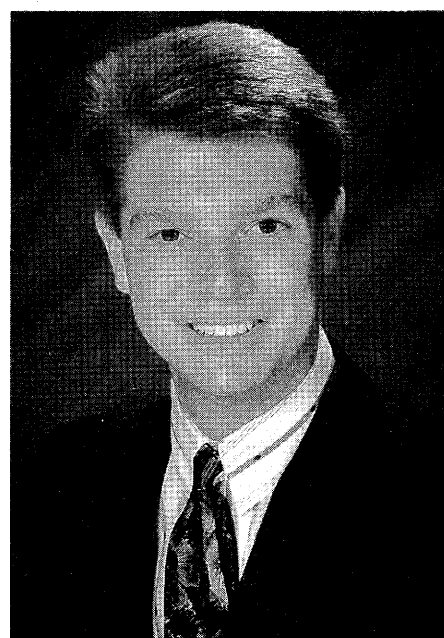
Germaine Hunter



Ben Johnson



J. V. Reed



Zach Rieken

NOVEMBER - DECEMBER L/D TOPIC

Resolved: The pursuit of feminist ideals is detrimental to the achievement of gender equality.

Vote For 1996 - 97 Debate Topic Areas. Ballot on Page 8

NFL'S LEADING STUDENTS

NFL ALL AMERICANS

Germaine Hunter	Denver-Washington HS, CO	1749
Laura A. Fernandez	Academy of the Holy Names, FL	1722
Ben Johnson	Springfield-Parkview HS, MO	1696
Zach Rieken	Kickapoo HS, MO	1695
J. V. Reed	Alva HS, OK	1680
Sam Halabi	El Dorado HS, KS	1674
Roger Flores	Field Kindley HS, KS	1618
J. Robert Willard, Jr.	Kansas City-Center HS, MO	1586
Joey Reske	Plano-East HS, TX	1561
Nathan R. Mather	Muscatine HS, IA	1555
Emily Porter	Franklin Pierce HS, WA	1549
Chris Paul	Wichita-East HS, KS	1537
Lisa Gabriel	San Antonio-Clark HS, TX	1534
Michelle Brown	Austin HS, MN	1534
Anita Kishore	Parsons HS, KS	1531
Robbie Kirsch	Raytown-South HS, MO	1529
Chris Francisco	Lawrence HS, KS	1520
Bradley D. Harmon	Ozark HS, MO	1502
Cheryl Tam	Danville-Monte Vista HS, CA	1499
Calvin Christopher	Klein Forest HS, TX	1485
Megan O'Neil	Alva HS, OK	1485
Winthrop Hayes	Klein HS, TX	1484
Carey Moore	Neosho HS, MO	1472
Sarah Stucky	Gonzaga Prep. HS, WA	1470
Jacob Sappington	Springfield-Parkview HS, MO	1468

POINT LEADERS

Jonathan Carr, Saint James School, AL	1463	Lisa VanMeter, McPherson HS, KS	1364
Jeffrey Reifenberger, Harrison HS, IN	1461	John Wright, Yankton HS, SD	1363
Prem Kumar, Syosset HS, NY	1460	Stacy L. Champagne, Wichita-Campus HS, KS	1363
Lanhee Chen, Rowland HS, CA	1450	Stacy Hoffman, San Antonio-Lee HS, TX	1358
Alex Wong, Bellarmine College Prep., CA	1448	John Voight, Mead HS, WA	1358
Robert Jones, Gregory-Portland HS, TX	1444	Alecia McKay-Jones, Duluth East HS, MN	1353
Brett Watson, Garden City HS, KS	1438	Matt Good, Lee's Summit HS, MO	1351
Julio Gonzalez, Nikki Rowe HS, TX	1426	Stephen Sides, Cooper HS, TX	1349
Kristy Kalanges, Gresham HS, OR	1424	Andrew Halverson, Derby HS, KS	1342
Ryan VanMeter, McPherson HS, KS	1422	James Burton, Miramonte HS, CA	1341
J. Earen Rast, Parsons HS, KS	1419	Cheryl Broom, San Dieguito HS, CA	1336
Monika Gehlawat, Bakersfield-West HS, CA	1415	Jasmine C. Marshall, Arroyo Grande HS, CA	1335
Allison G. Groves, Apple Valley HS, MN	1414	Benjamin I. Liwnicz, Redlands HS, CA	1335
Joseph Cutler, Mead HS, WA	1411	Mark Bankston, Lamar Consolidated HS, TX	1335
Justin Osofsky, Newman School, LA	1410	Ben S. Lerner, Topeka HS, KS	1334
Guenevere Collins, Albuquerque Academy, NM	1410	Athena Clay, Aurora HS, MO	1332
Darren B. Eckstein, Gresham-Barlow HS, OR	1406	Robert Gratzner, Taylor HS, TX	1332
Eric Trader, Hastings Senior HS, NE	1404	Christopher Tosh, Kiski School, PA	1332
Kari Oudenhoven, Fargo North HS, ND	1403	Pintip Hompluem, Parsons HS, KS	1332
Mindy Meisler, Evansville-Reitz HS, IN	1402	Kristi Morioka, Sacramento-Kennedy HS, CA	1331
James J. Rosenthal, Field Kindley HS, KS	1402	Andrew Toftey, The Marshall School, MN	1331
Shavonne Smith, San Antonio-Clark HS, TX	1401	Amanda Sapir, Silver Lake Regional HS, MA	1329
Jaynie Treat, Bartlesville HS, OK	1396	Amanda Fuhr, Wichita Heights HS, KS	1325
Ben Tremonte, Byram Attendance Center, MS	1396	Jennifer Amyx, Topeka-West HS, KS	1324
Jessica Hodge, San Antonio-Lee HS, TX	1391	Julie Barth, Sioux Falls-O'Gorman HS, SD	1323
Maureen McGinn, Howell North HS, MO	1388	Missy Longshore, Gonzaga Prep., HS, WA	1322
Daris C. Almond, Ritenour HS, MO	1387	Jennifer Leahy, Horton Watkins HS, MO	1322
Matt Bender, Evansville-Reitz HS, IN	1387	Shimon Whiteson, Los Alamos HS, NM	1317
Michael Gottlieb, Lawrence HS, KS	1386	Shelly DeWitt, Council Bluffs-Lincoln HS, IA	1317
Kirby Kozel, Sioux Falls-Washington HS, SD	1385	Abby Foroohar, S.O. Center Enriched Studies, CA	1314
Boris Bershteyn, Lynbrook HS, CA	1384	Claire Sisco, Alexandria Sr. HS, LA	1314
Jessica M. Dean, Ritenour HS, MO	1380	Joy Brennan, Aldine Sr. HS, TX	1312
Kazimera Heywood, Redlands HS, CA	1378	Max Leichtman, Washburn Rural HS, KS	1311
Casey Howard, Evansville-Reitz HS, IN	1378	Dede Seibel, McPherson HS, KS	1311
Doug Miller, Concordia HS, KS	1377	Matthew L. Case, Federal Way HS, WA	1311
Zachary K. Garen, The Blake School, MN	1376	Dale Ho, Bellarmine College Prep., CA	1309
Danie Sanchez, Spring HS, TX	1373	Jason Earle, San Antonio-MacArthur HS, TX	1309
Dawn Dziuba, Pattonville HS, MO	1373	Dan Crosby, Fort Wayne-Northrop HS, IN	1307
Shannon May, Mountain View HS, AZ	1367		

CHAPTER HONOR SOCIETIES

PENTAGON

(The classic five sided figure is the elite mark of honor for NFL chapters over 500 degrees)

School	Coaches	Degrees
Evansville-Reitz HS, IN.....	Mr. Robert Brumley, Mr. Daniel Durbin	625
Downers Grove-South HS, IL	Mr. John Hires, Ms. Jan Heiteen	606
Watertown HS, SD.....	Mr. Donus Roberts, Mr. L. Feuerstein, Mr. R. Mittelstedt, Mr. S. Shepard, Mr. Wm Zubke	507

THE 400

(Formerly the 400 families in New York City society now this name honors NFL chapters holding 400 plus degrees)

School	Coaches	Degrees
Shawnee Mission-Northwest HS, KS.....	Mrs. Deborah Glenn, Mrs. Sue Bryant, Ms. Sandi Gresham	469
Miami-Palmetto HS, FL	Mrs. Francine Berger	427
Bellarmino College Prep, CA	Mr. James Harville, Ms. Kim Jones, Mr. Bill Healy	421
Washburn Rural HS, KS.....	Ms. Cynthia Burgett, Ms. Sarah Thomas.....	416
Bronx HS of Science, NY.....	Mr. Richard Sodikow, Ms. Ann Shapiro, Mr. Robert Levinson, Mr. Kirby Chin.....	410
Shawnee Mission-West HS, KS	Mr. Chris Riffer, Mr. Robert Lane.....	404

SOCIETE 'DE 300

(An elite recognition for chapters achieving 300 or more degrees)

School	Coaches	Degrees
Chesterton HS, IN.....	Mr. Robert Kelly, Mr. Jim Cavallo, Ms. Carolann Biel, Ms. Barbara Funke	389
Bakersfield HS, CA.....	Mr. Craig Austin, Ms. Kelly Ferguson, Mr. Larry Adams.....	386
Ben Davis HS, IN.....	Mr. Harold McQueen, Ms. Ann Stepp.....	383
Topeka HS, KS.....	Ms. Pamela McComas, Ms. Diana Prentice, Ms. Jean A. Hardy.....	378
Independence-Truman HS, MO.....	Mr. Mike Jeffers	377
Apple Valley HS, MN	Mr. Wayne Brinton, Ms. Pam Cady	376
Lynbrook HS, CA.....	Mrs. Shirley Keller, Mr. Bruce Wilkinson	362
Millard-North HS, NE.....	Mr. Terry Peterson, Mr. Scott Milliken.....	361
Forest Lake HS, MN	Ms. Dorothy Sunne, Mrs. Deborah Bendix, Ms. Susan Novak, Mr. David Kuennen	358
Eagan HS, MN.....	Ms. Joni Anker, Ms. Paulette Reikowski, Mr. Michael Vergin	352
Lexington HS, MA.....	Mr. Leslie Phillips	348
James Logan HS, CA.....	Mr. Tommie Lindsey, Jr.	344
Lee's Summit HS, MO.....	Mr. Ben Martin, Ms. Cheryl Bramlette.....	341
North Kansas City HS, MO.....	Mr. Ron Jackson	332
Blue Valley Northwest HS, KS	Mr. Mahlon Coop	331
Houston-Bellaire HS, TX.....	Mr. David Johnson, Mrs. Dianne Johnson	329
Centerville HS, OH	Mr. Ralph Bender, Ms. Marie Dzuris, Mrs. Lynne M. Bustle, Ms. Elaine Daly	327
Southside HS, SC.....	Mr. Truman Humbert	323
Bakersfield-West HS, CA.....	Mrs. Ann Cierley, Mon Vettel, Mr. Christopher Norton	323
Appleton-East HS, WI.....	Mrs. Debra Weiher-Trass	321
Sioux Falls-Lincoln HS, SD	Ms. Kim R. Maass, Mr. Carl Swanson, Ms. Rosella Blunk	320
Regis HS, NY	Mr. Eric Di Michele	319
Miramonte HS, CA	Ms. Sandra Starke	314
Park Hill HS, MO	Mr. Don Crabtree	312
Cherry Creek HS, CO.....	Ms. Peggy Benedict.....	309
Marshall HS, MO	Mr. Paul Gieringer	309
Plymouth HS, IN.....	Mr. Daniel Tyree, Ms. Charlotte Tyree	307
Academy of the Holy Names, FL	Sr. Mary Patricia Plumb.....	307
Mead HS, WA	Mrs. Penny Johnston, Mr. Greg Schultz.....	303
Ashland HS, OR	Mr. John S. Tredway	302
Austintown-Fitch HS, OH.....	Mr. Kenneth A. Carano	302
Lawrence HS, KS	Mr. Steven Wood, Mr. Carl Mibeck	301

THE 200 CLUB

(Chapters with 200 or more members and degrees)



Glenbrook-North HS	IL	298	Nova HS	FL	225
Modesto-Beyer HS	CA	295	Salina-Central HS	KS	225
Tulsa-Washington HS	OK	295	Vestavia Hills HS	AL	225
Auburn HS	WA	292	Spring HS	TX	225
Norfolk HS	NE	287	Broken Arrow HS	OK	223
Redlands HS	CA	284	Hunters Lane HS	TN	222
Kearns HS	UT	283	Glenbrook-South HS	IL	222
Munster HS	IN	282	Sioux Falls-Washington HS	SD	221
Rosemount Sr HS	MN	281	Colton HS	CA	220
Riverside HS	SC	280	Montgomery Bell Academy	TN	219
Albuquerque Academy	NM	278	Bettendorf HS	IA	218
Hutchinson HS	KS	277	S O Center Enriched Studies	CA	218
Arroyo Grande HS	CA	273	Wichita Heights HS	KS	218
Canton-GlenOak HS	OH	272	Damien HS	CA	218
Danville-Monte Vista HS	CA	272	Plano HS	TX	217
Shawnee Mission-South HS	KS	272	Kansas City-Oak Park HS	MO	216
Raytown-South HS	MO	268	Leland HS	CA	216
Garden City HS	KS	267	Newman Smith HS	TX	216
New Trier HS	IL	267	Muscatine HS	IA	215
Martin County HS	FL	265	Suncoast HS	FL	215
Salina-South HS	KS	265	Sioux Falls-O'Gorman HS	SD	215
Neosho HS	MO	264	Cape Elizabeth HS	ME	214
Golden HS	CO	260	Fort Wayne-Northrop HS	IN	213
McCullough HS	TX	258	T. L. Hanna HS	SC	213
Brebeuf Prep School	IN	257	Sarasota-Riverview HS	FL	212
El Dorado HS	KS	257	Battle Ground Academy	TN	211
Homewood-Flossmoor HS	IL	253	Clovis-West HS	CA	211
San Antonio-Churchill HS	TX	253	McPherson HS	KS	210
Carrollton HS	OH	251	Perry HS	OH	209
Pattonville HS	MO	247	Brookings HS	SD	209
Topeka-West HS	KS	246	Grand Rapids HS	MN	208
Stuyvesant HS	NY	244	Syosset HS	NY	207
Chaminade HS	NY	242	Saint James School	AL	207
Gregory-Portland HS	TX	242	Millard-South HS	NE	207
Taylor HS	TX	241	Salt Lake City-Skyline HS	UT	207
Sheridan HS	WY	240	Logansport HS	IN	207
Lamar Consolidated HS	TX	238	Springfield-Glendale HS	MO	206
Milbank HS	SD	238	Dayton-Oakwood HS	OH	206
Bozeman HS	MT	237	Alta HS	UT	205
Blue Springs South HS	MO	237	Montwood HS	TX	204
Roosevelt HS	SD	237	San Fran-Lowell HS	CA	204
Stow Munroe Falls HS	OH	232	Hattiesburg HS	MS	204
West Des Moines-Valley HS	IA	231	Marshall HS	MN	203
Fort Scott HS	KS	231	Newburgh Free Academy	NY	203
Caddo Magnet HS	LA	230	Flathead Co. HS	MT	203
Nevada HS	MO	229	Liberty Sr. HS	MO	201
Field Kindley HS	KS	226	Emporia HS	KS	201
Taft HS	CA	226	Cathedral Prep. School	PA	200
Wooster HS	OH	226			

LARGEST NFL CHAPTERS

1994 - 1995

1.	Evansville-Reitz HS <i>c: Mr. Dan Durbin</i>	IN	625
2.	Downers Grove-South HS <i>c: Mr. John Hires</i>	IL	606
3.	Watertown HS <i>c: Mr. Donus Roberts</i>	SD	507
4.	Shawnee Mission Northwest HS <i>c: Mrs. Deborah S. Glenn</i>	KS	469
5.	Miami-Palmetto HS <i>c: Mrs. Francine Berger</i>	FL	427
6.	Bellarmino College Prep. <i>c: Mr. James Harville</i>	CA	421
7.	Washburn Rural HS <i>c: Ms. Cynthia Burgett</i>	KS	416
8.	Bronx HS of Science <i>c: Mr. Richard B. Sodikow</i>	NY	410
9.	Shawnee Mission-West HS <i>c: Mr. Chris Riffer</i>	KS	404
10.	Chesterton HS <i>c: Mr. Robert Kelly</i>	IN	389
11.	Bakersfield HS <i>c: Mr. Craig A. Austin</i>	CA	386
12.	Ben Davis HS <i>c: Mr. Harold McQueen</i>	IN	383
13.	Topeka HS <i>c: Mrs. Pamela K. McComas</i>	KS	378
14.	Independence-Truman HS <i>c: Mr. Michael Jeffers</i>	MO	377
15.	Apple Valley HS <i>c: Mr. Wayne Brinton</i>	MN	376
16.	Lynbrook HS <i>c: Mrs. Shirley Keller</i>	CA	362
17.	Millard-North HS <i>c: Mr. Terry Peterson</i>	NE	361
18.	Forest Lake HS <i>c: Ms. Deborah J. Bendix</i>	MN	358
19.	Eagan HS <i>c: Ms. Joni Anker</i>	MN	352
20.	Lexington HS <i>c: Mr. Leslie Phillips</i>	MA	348
21.	James Logan HS <i>c: Mr. Tommie Lindsey, Jr.</i>	CA	344
22.	Lee's Summit HS <i>c: Mr. Ben F. Martin</i>	MO	341
23.	North Kansas City HS <i>c: Mr. Ron Jackson</i>	MO	332
24.	Blue Valley Northwest HS <i>c: Mr. Mahlon Coop</i>	KS	331
25.	Houston-Bellaire HS <i>c: Mr. David Johnson</i>	TX	329

LARGEST NUMBER OF NEW DEGREES 1994 - 1995

1.	Evansville-Reitz HS <i>c: Mr. Dan Durbin</i>	IN	251
2.	Watertown HS <i>c: Mr. Donus Roberts</i>	SD	203
3.	Shawnee Mission Northwest HS <i>c: Mrs. Deborah S. Glenn</i>	KS	196
4.	Downers Grove-South HS <i>c: Mr. John Hires</i>	IL	185
5.	Stuyvesant HS <i>c: Ms. Julie Sheinman</i>	NY	180
6.	Blue Valley Northwest HS <i>c: Mr. Mahlon Coop</i>	KS	176
7.	Ben Davis HS <i>c: Mr. Harold McQueen</i>	IN	173
8.	James Logan HS <i>c: Mr. Tommie Lindsey, Jr.</i>	CA	168
9.	Chesterton HS <i>c: Mr. Robert Kelly</i>	IN	165
10.	Forest Lake HS <i>c: Ms. Deborah Bendix</i>	MN	162
11.	Lynbrook HS <i>c: Mrs. Shirley Keller</i>	CA	157
12.	Southside HS <i>c: Mr. Truman Humbert</i>	SC	157
13.	Independence-Truman HS <i>c: Mr. Michael Jeffers</i>	MO	156
14.	Bellarmino College Prep. HS <i>c: Mr. James Harville</i>	CA	154
15.	Washburn Rural HS <i>c: Ms. Cynthia Burget</i>	KS	154
16.	Liberty Sr. HS <i>c: Mr. Dana C. Hale</i>	MO	150
17.	Kearns HS <i>c: Mr. Robert McDaniel</i>	UT	149
18.	Millard-North HS <i>c: Mr. Terry Peterson</i>	NE	148
19.	Bronx HS of Science <i>c: Mr. Richard Sodikow</i>	NY	146
20.	Cherry Creek HS <i>c: Ms. Peggy Benedict</i>	CO	146
21.	Auburn HS <i>c: Mr. Michael Burton</i>	WA	144
22.	Canton-GlenOak HS <i>c: Mr. Nick Bollas</i>	OH	143
23.	Topeka HS <i>c: Mrs. Pamela McComas</i>	KS	141
24.	Miami-Palmetto Junior HS <i>c: Mrs. Francine Berger</i>	FL	139
25.	Bakersfield HS <i>c: Mr. Craig Austin</i>	CA	138

IOWA

DEBATE HANDBOOK

This book marks the publication of the 5th *Iowa Debate Handbook*. Produced by staff and student members of the A. Craig Baird Debate Forum at the University of Iowa, it is designed to assist high school students in preparing for the 1995-1996 interscholastic season.

This year's volume includes more than 3200 pieces of outlined evidence, all specific to the '95-96 China resolution, and all negative. Evidence includes: arguments against likely major affirmative harm claims (e.g., China dissolution, South China Sea conflict, Chinese environmental degradation, China human rights deprivations), arguments against common cases (e.g., GATT admission, a tilt toward Taiwan, discouraging Three Gorges dam construction, human rights trade linkage), disadvantages (e.g., Taiwanese/Indian/Russian reaction, Clinton popularity, fast Chinese economic growth bad) and counterplan evidence (Japan, ASEAN).

Users of last year's highly popular book will be pleased at its returning features: a comprehensive and easy-to-use outline at the front of the book (no thumbing through multiple sections to find the card you want), outline tags reproduced on each piece of evidence, and an especially easy-to-read printing style.

The book has the following additional strengths:

- It focuses on evidence sources at the heart of the topic literature, which are unlikely to be available to the average student. Most evidence centers on link and case evidence. The benefit is that you gain instant access to many books importantly related to the topic but which, because of their generality, tend not to be read once the year starts.
- Evidence conforms to N.F.L. guidelines. Elaborate checks to guarantee authenticity, context, and citation accuracy of the evidence.

- Evidence printed one side of the page only. The outline codes evidence in perfect sequential order – no letter codes to mess with. The crystal-clear outline is comprehensive.

The book was edited by David Cheshier, assistant debate coach at the University of Iowa. Cheshier has edited or researched for many high quality books, including the *Debater's Research Guide*, *Communican*, *Griffin*, and *Georgetown*. He coordinates the policy division of the Iowa Debate Institute, and has taught for many years at the nation's best summer programs. As of this fall he is serving as director of a new policy debate program at Georgia State University in Atlanta. Other research for the book was done by Michael Antonucci, Will Hacker, Heidi Hamilton, Corey Rayburn, Niko Poulakos, and Nathan Coco.

To order the book, please send check, purchase order, or letter requesting direct billing to Julie Flesner, Credit Programs.

Thank you for buying *Iowa Debate Handbooks*!

Contact: Julie Flesner
Credit Programs
Continuing Education
116 International Center
The University of Iowa
Iowa City, IA 52242

319/335-2039
or FAX 319/335-2740

Cost per book:
1 @ \$25.00
2-4 @ \$20.00
5 or more @ \$15.00



AMERICA'S FOREIGN POLICY TOWARD CHINA

1995-1996 Edition • All Negative Evidence • David Cheshier, Editor

QUAD RUBY STUDENTS

(12/01/94 TO 7/31/95)

ALASKA

Robert Service HS
Peter Wright

ALABAMA

Mars Hill Bible School
Banks Lyons
Vestavia Hills HS
Benjamin Osborne
Saint James School
Anna Bowen
Nathan Foy

ARIZONA

Snowflake HS
Daniel J. Van Gesen
Sunnyslope HS
Shira Shafir
Mountain View HS
Shannon May
Chaparral HS
Amy Morrow

CALIFORNIA

Bakersfield HS
Greg Fields
Jamal R. Watkins
Michelle Soltani
Nicholas R. Lacher
Bellarmine College Prep
Morton Park
Perry Chen
East Bakersfield HS
David Rosengard
Jason Bosch
Colton HS
Lana M. Wellard
Wade P. Burrows
Redlands HS
Benjamin I. Liwnicz
Justin B. Aprmadoc
Keith R. Duckett
Kevin Artigue
Maisie A. Kilpatrick
Paul Jungwirth
San Gabriel HS
David Green
La Habra HS
Meghan Sweet
San Marino HS
Matt Spence
Fresno-Bullard HS
Gretchen Hoff
Cleveland HS
Daniel E. Shea
Sanger HS
Mina Suk
Lynbrook HS
Ajit Thomas
Boris Bershteyn
William Chen
Taft HS
Allison Ginter
Darcy Bachrach
Jackie Cyriac
Lee Leshem
Tamas Szarvas
Monta Vista HS
Patty Kao
Harvard-Westlake Upper School
David Ducommun
David Nemecek
Bakersfield-West HS
Donald K. Baker
Jason Reed
Joshua Martin
Ryan L. Doughty
Modesto-Beyer HS
Adi Goldman
Jamie Weaver
Sarah Burdge
Shannon Fisher

Cypress HS
Binu Palal
Danville-Monte Vista HS
Cheryl Tam
Nicole Kohleriter
Pinole Valley HS
Sonai Pandya
San Geronio HS
Amber Hladik
Mt. Carmel HS
Adrian Ludwig
Marysville HS
Andrew Orr
Miramonte HS

James Burton
Robert Lundin
Arroyo Grande HS
Jasmine C. Marshall
Katie R. Caldwell
Michael P. Dixon
Mira Rubin
Derek M. Banducci
S. O. Center Enriched Studies
Abby Forohar
Rogin Kim
Teresa Chow
Troy HS
Jigar Thakkarar
James Logan HS
Denny Wu
Jason Ford
Jean Kuei
Kalyanaramon Balavenkatesan
Miriam Nalumansi
Johansen HS
Daniel Scheele

COLORADO

Lakewood HS
Jeff Mankoff
Mullen HS
Sarah McGonigle
Palmer HS
Jason Oraker
Columbine HS
Rachel Eichenbaum
Steamboat Springs HS
Kristin Wolff
Moffat County HS
Andrea Kramer
Ben Pressley
Chad Willbur
Ryan Harkner
Amy Weible
Gateway HS
Jared L. Hutchings
Sierra HS
Greg Johnson
St. Mary's HS
Rachel Keith

FLORIDA

Academy of the Holy Names
Emily Courey
Karina Azank
Kristina Cusmano
Palm Beach Lakes HS
Joseph Liebman
Sarasota-Riverview HS
Jeff Jones
Nova HS
Joshua Rosenstein
Lee Bierman
North Miami Beach HS
Erick Munoz
Miami-Palmetto HS
Jared Fisher
Leslie Mueller
Greg Goldfarb
Danny Goldberg
Southeast HS
Sara Davis

GEORGIA

Northside HS

Julian Harris

IOWA

Muscatine HS
Brian J. Metcalf
Jacob T. Furlong
Jessica A. Trent
John N. Conlon
Keokuk HS
Samer Yahyawi
Council Bluffs-Lincoln HS
Jessie Morris
Roosevelt HS
Paul Tevis
Bettendorf HS
Lana Zak
Matthew Atkinson
Des Moines-Lincoln HS
Stephen Christman
Marshalltown HS
Ben Stansberry
Dan Boscaljon
Jason Mathison
Sara Nelson
Ikoboji Community School
Christine Ingraham

IDAHO

Blackfoot HS
Patrick Scarborough
R. Rudy Ganske
Meridian HS
Dawn Bird

ILLINOIS

Dundee-Crown HS
James Faber
Tim Griskey
Heyworth HS
Ryan Mellske

INDIANA

Castle HS
Chris Brewster
Indiana Academy
Aaron Wallisch
La Porte HS
Wayne Lashua
Chrysler HS
Michael Dudley
Ben Davis HS
Edward Lee
Ryan Collins
Evansville-Reitz HS
Casey Howard
Christie Kim
Daniel P. Berg
Matt Bender
Mindy Meister
Logansport HS
Amy Schieber
Kristin Kasting
Tammy Bowman
Oak Hill HS
Toby Stoops
Brebeuf Prep. School
Emily Birkhauser
Sara Spalding
Chesterton HS
Brian Showers
Chad Walters
Richard Markwart
Tim Hurley
Northfield HS
Kristina Adams
Plymouth HS
Courtenay Myers
Dan Vialard
Denver Bierman
Jennifer Dixon
Tony Meadors
Evansville-Mater Dei HS
Chris Spahn
Carmel HS
Jennifer Orr

Hamilton Heights HS
Kelly Cochran
Attica HS
Tara Myers

KANSAS

Wichita-East HS
Aleishe Baska
Megan Read
Salina-Central HS
Kevin Heath
Topeka HS
Ben S. Lerner
Bradley P. Armstrong
Melissa L. Stanfield
Rebecca A. Ihrie
McPherson HS
Dede Seibel
Josh Davis
Joshua Kaufman
Shawnee Mission North HS
Doug Neill
Lawrence HS
John P. Fawcett
Fort Scott HS
Heather Eads
Sara Gentry
T. A. Jones
Tara Neil
Hutchinson HS
Ben Walker
Jason Thompson
John Clune
Ramiro Pacheco
William Hester
Great Bend HS
Krissie Thompson
Shawnee Mission East HS
Sara Romang
Emporia HS
Emily Owens
Wichita Southeast HS
Billy Burnett
Wichita-South HS
Mandy Brown
Garden City HS
Carolyn Meyers
Chelsea Brandenburg
Jay Witt
Parsons HS
Alan D. Wilkinson
Jane S. Lava
Keiv Daniel Spare
Sheila Pai
Topeka-West HS
Brandon Reinhart
Jennifer Amyx
Topeka-Seaman HS
Jeff Hall
Shawnee Mission-West HS
Ethan Southworth
Nathaniel Stankard
Shawnee Mission-South HS
Grant McKeehan
Wichita Heights HS
Jason Jabara
Hays HS
Paula Donner
Shawnee Mission Northwest HS
Andy Tompkins
Kelly Prince
El Dorado HS
Josh Sturgill
Lindsey Gaston
Concordia HS
Doug Miller
Justin Hattan
Shawn Tiekling
Salina-South HS
Nathan Tysen
Nicole Skalla
Chaparral HS
Kendra Hughes
Field Kindley HS
Erin D. Harbaugh

James J. Rosenthal
Jennifer E. Niedenthal
Jennifer A. Tatom
Jennifer E. Bumgarner
Jennifer M. Malone
Remington HS
Daniel R. Leben
Washburn Rural HS
Amir Sufi
Lisa Hyten
Buhler HS
Aaron Breitenbach
Justin Nichols
St. Mary's HS
Heidi Eichman
Silver Lake HS
Wallace Burton
Brian Lilley
Greg Heinen
Liberty D. Cairns
Valley Center HS
Bruce Marshall
Caney Valley HS
Kelly Jones
Liberal HS
Jimmy Manning
Blue Valley Northwest HS
Sarah Millin

KENTUCKY

Lafayette HS
Tony Zani
Rowan County Sr HS
Maria Franzini

LOUISIANA

Lafayette HS
Olita Magee
Comeaux HS
Aimee Robert
Holy Cross HS
Peter Kennedy
Caddo Magnet HS
Ned Freeman
Todd Callais

MASSACHUSETTS

Silver Lake Regional HS
Amanda Sapir

MARYLAND

Winston Churchill HS
Anna Su
Whitman HS
Jeremy H. Greenberg
Susruta Misra
Calvert Hall College HS
Chris Kristofco

MICHIGAN

Portage-Northern HS
Cyrus Mousavinezhad
Sara Falls
Stacey Falls

MINNESOTA

Mankato-West HS
Jessica Hermann
Grand Rapids HS
Jesse Einyck
Odin Erickson
Duluth East HS
Melanie Larson
Robert Baker
The Blake School
Zachary K. Garen
Walker HS
Renee Sanford
Apple Valley HS
Brendan C. Kelly
Rob Lindgren
Shane J. Colin
Rosemount Sr HS
Casey Roetter
Christy Kolle

Sarah Masurka
Forest Lake HS
Andrew Cheyne
Chris Wheatley
Pat Wenum
Sarah Sicheneder
Eagan HS
Sarah Fellows
The Marshall School
Kjersten Reich

MISSOURI

Independence-Christman HS
Amanda C. Buttler
Amie P. Case
Monett HS
Daniel Hoyt
Morgan Vandagriff
Kansas City-Rockhurst HS
Christopher Mohart
North Kansas City HS
James R. Bramble
Japa Pallikkathayil
Neosho HS
Angela Moore
Carey Moore
Cassville HS
Bradley Epperly
Joplin HS
Christy Thomas
Springfield-Parkview HS
Davina Reynolds
Josh Douglas
Krista Pogue
William Cologna
Springfield-Hillcrest HS
Joe Kilpatrick
Kale Ness
Sarah Gamble
Springfield-Glendale HS
Christie Loguzzo
Emily Monroe
Jennifer Marsh
Marshall HS
Amanda Meck
Bryon Jacques
Derek Wittman
Jeff Cott
Jill Thomeczek
Stacy Tucker
Torrie Smith
Independence-Truman HS
Andrew Zellers
Jerome Patience
Lisa Martin

Raytown HS
Nichole George
Troy Payne
Parkway West HS
Tina Suneja
Raytown-South HS
Lenny Nuccio
Maureen Woods
Park Hill HS
Gabe McKinley
Nadia Morey
Kickapoo HS
Jon Pitts
Ryan Witt
Lee's Summit HS
Carli Howard
Parkway Central HS
Chuck Divine
Lindsay Cohen
Bailwin-Lafayette HS
Brian Barnes
Mike Spohn
Belton HS
Nicole Kelly
Chris Barnes
Parkway South HS
Andrew Elders
Nevada HS
Sara Copeland
Aurora HS
Athena Clay
Nixa R-2 Schools
Tom Creek
Reeds Spring HS
Jason Bray
Houston HS

Debra Wells
McDonald County HS
Lowell M. Gardner
Pembroke Hill School
Aaron Rosenberg
Poplar Bluff Sr High
Drew Brown
Seneca HS
John Gordanier
Ritenour HS
Gina Blake
Stephanie A. Holicka

MISSISSIPPI

Clinton HS
Will Shumate

MONTANA

Great Falls-Russell HS
Chad Bralick
Corvallis HS
Sadie Swallow

NORTH CAROLINA

Enloe HS
Sharif Durhams

NORTH DAKOTA

Fargo-South HS
Brent Cusher
Larry Villella
Tyler Anderson
Grand Forks Central HS
Jessica Bowen
Fargo Shanley HS
Alicia Crary

NEBRASKA

Kearney Sr. HS
Jess Sweley
Steve Barth
Norfolk HS
Holly Stanley
Kelly Scott
Fremont HS
Sara Shadbolt
Columbus HS
Erik Nelson

NEW JERSEY

Montville HS
Cindy Chen

NEW MEXICO

Taos HS
Amy Chavez
Los Alamos HS
Gabriel Scannapieco
Shimon Whiteson
Albuquerque Academy
Kate Van Devender
Matt Kutny
Emeline Abeita
Guenevere Collins

NEVADA

Chaparral HS
Lisa Matsuoka
Bonanza HS
Edwin Aralica

NEW YORK

McQuaid Jesuit HS
Michael Doerrer
Bishop Kearney HS
David Jones
Syosset HS
Leah Elalouf
Matthew Levine

OHIO

Youngstown-Mooney HS
Michael Dunn
Findlay HS
David R. Fiske

OKLAHOMA

Guymon HS
Stacy Baggerly
Tulsa-Washington HS

Bentley Coffey
Sapulpa HS
Dennis R. Shelley
Alva HS
Greg Jungman
Guru Shanmugamani
Kingfisher HS
Julie Ann Sigl
Cascia Hall Prep.
Sara Bingman
Luther HS
Andrea Reed
Matt Reynolds
Muldrow HS
Brent Price

OREGON

Ashland HS
Anna R. Mathieson
Canby HS
Jason Miller
Megan Farrar
Ray Pinkham
Sarah Riley
Clackamas HS
Brian Everest
Darrell Tibbles
Gresham-Barlow HS
Colleen Gross
Darren B. Eckstein
Glencoe HS
Joe Perko
Eagle Point HS
Robin Hayes
Willamette HS
Rachel Kalms
Portland-Lincoln HS
Jacob Weigler
Michael Schmierbach

PENNSYLVANIA

North Hills HS
Ellen Galaray
Patty Byrnes
North Catholic HS
Sarah Davitt
Central Catholic HS
Joseph F. Varrati
Cathedral Prep. School
Erwin Ng
Bethel Park HS
Amy Burke
Belle Vernon Area HS
Michael Peters
Steven Millward
Truman HS
Kelly Gable
Lower Merion HS
Stephen Tolbert
Shikellamy HS
Mattias Geise

SOUTH CAROLINA

Bob Jones Academy
David Nalley
Riverside HS
Derek P. Alexander

SOUTH DAKOTA

Huron HS
Brian Sappington
Madison HS
Austin Eich
Nathan P. Grimm
Rebecca White
Watertown HS
Amber Vanderfeen
Brad Snedeker
Colleen Meisenheimer
Jessie Chapin
John Hurney
Mike Glover
Sioux Falls-Vashington HS
Kirby Kozel
Mike Randall
Robert Hodgson
Mitchell HS
T. J. Hockett
Sturgis-Brown HS
Corey Christians
Brookings HS

Amber Hofer
Ann Fishback
Milbank HS
Amy Raelther
Chris Bue
Emily Loeschke
Heather Pinkert
Michael Hay
Travis Dahle
Sioux Falls-O'Gorman HS
Julie Barth
Aberdeen Central HS
Andrew Janke
Sioux Falls-Lincoln HS
Allison Davis
Amber Elverud
Brent Bertsch
Naomi Caraballo
Rapid City-Stevens HS
Craig Hunter
Sara Thalacker
Deuel School
Laura Atyco
Beresford HS
Jackie Evenson
Marie Tornberg
Roosevelt HS
Amanda Hilleson
Angie Kelley
Joslyn Snow
Mike Muilenberg
Taryn Koball
Tim Meyer

TENNESSEE

Battle Ground Academy
Matt Unger
Hunters Lane HS
Andrew Woodall

TEXAS

Elsik HS
Himanshu Nagar
San Marcos HS
Phillip Gilley
Amarillo HS
David Brown
Kathleen Patrick
Garland HS
Jessamy Millican
San Antonio-MacArthur HS
Charles Leykum
Jaime Bruner
Amarillo-Tascosa HS
Erin Kenyon
Lamar Consolidated HS
Mark Bankston
Klein HS
Shawn Rabin
Steven Huang
Cooper HS
David Register
Jeff Casey
Josh Roberts
Stephen Sides
Trinity HS
Jay Conklin
L. B. J. HS
Jennifer Harkness
Dulles HS
Siby Moonnakal
Humble HS
Brian Gathright
Newman Smith HS
Katie Hatzivramidis
Westlake HS
Afton Granberry
Cypress Creek HS
Anjan Choudhury
Laura Burkards
San Antonio-Clark HS
Emily Winakur
Klein Forest HS
Marybeth Mullarkey
Gregory-Portland HS
Berenice Perez
Brad Russell
El Paso-Cathedral HS
Marcos Gemoets
Nick Almanza
Plano-East HS
Drew Smith

Dustin Malcom
Stephanie Potter
Klein Oak HS
Chad Dunn
Taft HS
Sommer Bender
Westwood HS
Richard Kincaid
Grapevine HS
Meghan Blair
Tejal Shah
Midway HS
Phillip Edwards
Bishop HS
Nathan Bigbee
Montwood HS
Adriann Sevall

UTAH

Bingham HS
Brian Young
Kearns HS
James Devore
Joel Stanton
Laura Draper
Sky View HS
Matthew Klag
Alta HS
Chris Winstead
Mountain View HS
Jeff Tolley

VIRGINIA

Edison HS
James Langley
Scott Malzahn
Blacksburg HS
Michael Shumsky

WASHINGTON

Auburn Sr. HS
Aaron R. Fossum
Isaac Kamola
Paul Jensen
Federal Way HS
Angela M. Chung
Matthew L. Case
Shaun Halder
Central Valley HS
Phil J. Koestner
Sarah E. Tompkins
Mead HS
Katherine Schiffrer
Sarah Peterson
Sarah Westergren
Franklin Pierce HS
Lori Bemis
Oak Harbor HS
Aaron Moburg-Jones
Adam Symonds

WISCONSIN

Durand HS
Becky Jevne
West Bend East HS
Craig Ormson
Deborah Schwartz
Jaimee Minney
Philip Staffin
Appleton-East HS
Srinu Reddy
St. Croix Falls HS
Carissa Trumble
Don Tabat
New London HS
Kelly Williams
Sarah Matze
Hortonville HS
Abbey Metz
Becky Jenks
Kristi Plamann
Neenah HS
Robert Yablon

WYOMING

Cheyenne-Central HS
Joe J. Foy
Matthew T. Wolf
Green River HS
Cynthia McCoy
Sheridan HS
Katy Bieh

P

Philosophy in Practice: Understanding Value Debate

Philosophy in Practice is a new kind of Lincoln-Douglas text for both debaters and coaches. Written by a college philosophy instructor, it explains the major philosophical theories and concepts in terms that are understandable to students at all levels, while remaining true to legitimate philosophical interpretations. This book provides authoritative insights into the real strengths and weaknesses of each theory, as well as practical strategies for attacking and defending these theories developed by an author who has experience as both an L-D debater and coach.

Material is presented in an easy to use outline format, and sections are identified as either novice, intermediate, or advanced — making this book accessible to new debaters and yet insightful for experienced debaters.

In addition to elucidating theories and concepts, the book also provides several chapters designed to teach new debaters, as well as chapters on the underlying theory of L-D.

No other Lincoln-Douglas text has ever done so much to contribute to a genuine understanding of the philosophical theories and concepts employed in this event.

PHILOSOPHY IN PRACTICE IS A MUST HAVE FOR ANYONE STUDYING LINCOLN-DOUGLAS DEBATE, AND THE PERFECT COMPANION TEXT TO JEFFERY WEISS' LINCOLN-DOUGLAS DEBATE: VALUES IN CONFLICT.

Philosophy in Practice is available exclusively from Clark Publishing, Inc. To order the most thorough and insightful text on philosophical argumentation in Lincoln Douglas debate available, Call Clark Publishing Toll Free at:

by
R. Eric Barnes
Available
November 1, 1995

1-800-845-1916

OUTSIDE U.S. 1-913-862-0218

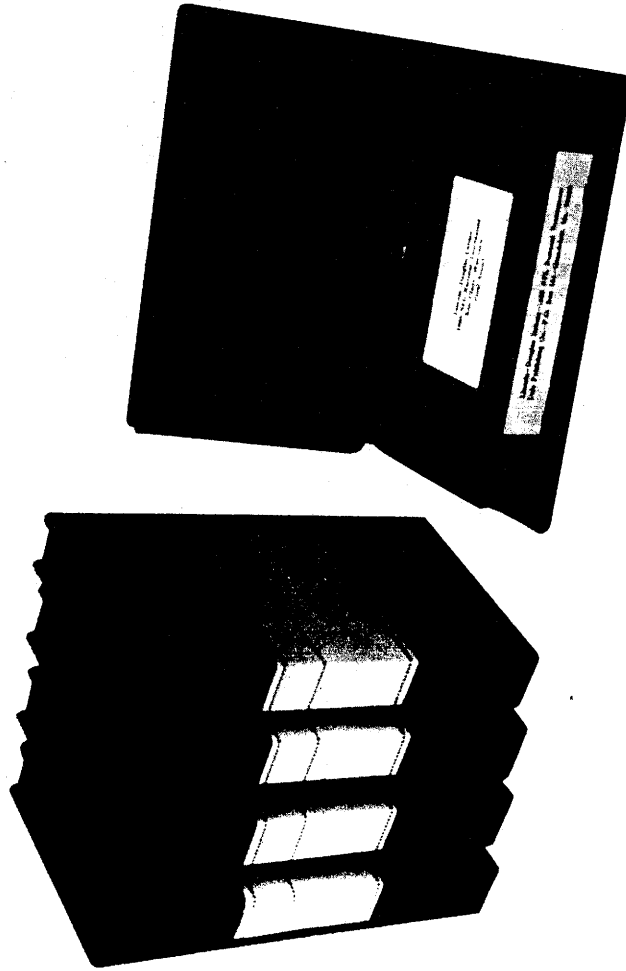
Developing Communication Skills

Clark

Publishing
Since 1948

Nationals Via Videotape

Watch the winners



Video allows you to truly expand your travel and instruction budget. Give every student the visual advantage of seeing the NFL National Tournament final rounds! **The National Forensic League will receive a significant royalty from every tape sold.**

- * NFL National Tournament Final Rounds are now available for tournaments since 1983
- * All tapes professionally produced and edited
- * Major formats available
- * 1995 tapes shipped September 1, 1995
- * Specify years desired. *Ordering errors are purchaser's responsibility*

ORDER FORM

School	
Name	
Address	
City	State Zip
Specify Year(s) Desired _____ Format Desired VHS _____ Beta I _____ Beta II _____	
Payment or Purchase Order Required Check Enclosed _____ (Publisher Pays Postage) P.O. Attached _____	
	Qty.
Cross Examination Debate	\$69.95
Lincoln Douglas Debate	\$69.95
Original Oratory	\$69.95
Foreign Extemp	\$69.95
United States Extemp	\$69.95
Complete Package BEST BUY All Five Final Rounds	\$310.00
Supp. Events: Ex. Comm./Imp./ Exp. Spkg.	\$69.95
Awards Assembly	\$49.95
Shipping and Handling add 10%	TOTAL

Order From:
DALE PUBLISHING, INC.
 P.O. 51
 GREENWOOD, MO. 64034
 (816) 537-7070

ANNUAL REPORT 1994-95

This report summarizes the number of new members and degrees added by each chapter during the school year 1994-95. It does not reflect the current strength of each chapter. The number of new members and degrees added by each chapter appears in the column "New." The "Total" column indicates accumulated members and degrees for the chapter since its founding or since it last received the Leading Chapter Award.

The column marked '95 designates the chapter rank as of June 30, 1995. The column '94 designates the chapter rank the previous year. The special symbols are defined above the summary.

Each year the top chapter in accumulated members and degrees, not more than one in a district, receives a special chapter award for excellence in speech. When a chapter has received the Leading Chapter Award its accumulated total returns to zero and begins a new Leading Chapter Award record. The symbol ('83) indicates the last time a chapter was awarded the Leading Chapter Award. A school may not receive the Leading Chapter Award unless it has been a member for five years or a period of five years has passed since last receiving the award. If it lost its Charter or has been suspended or expelled or failed to add new members and degrees during the school year it is also ineligible.

A tie in the accumulated total for the Leading Chapter Award is broken in favor of the school which enrolled the greater number of new members and degrees during that school year.

This report does not contain the records of affiliate schools.

+ Leading Chapter Award

New or Restored Chapter

* Lost or Suspended Charter

DEEP SOUTH

'95 '94 Chapter	New	Total
1. 3. +Saint James School	76	347
2. 2. Mountain Brook ('89)	35	334
3. 6. Montgomery Academy	61	280
4. 4. Tuscaloosa Co	14	271
5. 5. Indian Springs School	24	254
6. 7. Hoover	16	189
7. 8. Henderson ('86)	15	179
8. 9. Thompson	20	149
9. 12. Hillcrest	40	145
10. 17. Vestavia Hills ('93)	75	135
11. 13. Decatur ('91)	26	128
12. 10. Holt ('87)	6	123
13. 11. #Guntersville	11	118
14. 14. John Carroll	0	98
15. 16. Lanier	29	92
15. 15. Briarwood Christian	0	92
17. 1. Mars Hill Bible ('94)	66	66
18. 19. Homewood ('92)	7	51
19. 20. #Huffman ('90)	8	47

ARIZONA

'95 '94 Chapter	New	Total
1. 2. +Shadow Mountain	22	448
2. 3. Chandler ('79)	7	420
3. 4. Corona del Sol	28	397
4. 4. Marcos de Niza	6	375
5. 10. McClintock ('88)	70	349
6. 6. Phoenix-Xavier ('85)	10	343
7. 8. Brophy College Prep ('84)	23	331
8. 12. Cortez	44	317
9. 7. *Gilbert	0	314
10. 11. Tolleson Union	22	296
11. 13. Buena	19	280
12. 16. Flagstaff	42	258
13. 21. Dobson ('92)	90	240
14. 16. Chaparral	22	238
15. 15. Saguaro	0	235
16. 20. St. Johns	28	216
17. 18. Peoria	10	215
18. 19. Mesa	21	214
19. 22. Blue Ridge	34	170
20. 24. Salpointe Catholic ('90)	31	145
21. 23. Phoenix-Washington	17	144
22. 26. Sunnyslope ('91)	40	142
23. 25. Sanders-Valley	14	125
24. - #River Valley	50	124
25. 28. Mountain View ('93)	76	112
26. - #Sinagua	37	60
27. - #Mountain Pointe	32	54
28. 1. Horizon ('94)	0	0

BIG ORANGE

'95 '94 Chapter	New	Total
1. 2. +Huntington Beach	94	407
2. 3. Anaheim-Western ('77)	16	301
3. 4. Troy	37	288
4. - #Westminster	11	253
5. 7. Esperanza	35	174
6. 6. Huntington Beach-Marina ('80)	0	169
7. 8. *Estancia ('86)	3	118
8. 12. Buena Park ('91)	32	103
8. 11. La Habra ('89)	28	103
10. 9. Capistrano Valley	0	81
11. 10. Sonora	0	78
12. 15. Cypress ('92)	33	69
13. 1. Brea-Olinda ('94)	31	31
14. 18. *Orange	0	0
15. 17. Los Alamitos ('93)	0	0

BIG VALLEY

'95 '94 Chapter	New	Total
1. 2. +Stockton-St. Mary's	37	475
2. 5. Modesto-Beyer ('91)	126	461
3. 3. Turlock ('88)	47	408
4. 4. Stockton-Lincoln ('85)	27	378
5. 6. Modesto ('81)	17	227
6. 7. Stockton-Stagg ('87)	21	188
7. 8. *Modesto-Downey ('90)	0	125
8. 10. Lodi ('93)	50	121
9. 9. Johansen	22	95
10. 11. Edison ('92)	30	88
11. 1. Modesto-Davis ('94)	19	19

CALIFORNIA COAST

'95 '94 Chapter	New	Total
1. 2. +Los Gatos ('78)	47	562
2. 3. Campbell-Westmont	48	525
3. 9. Bellarmine Prep ('92)	154	455
4. 4. Monta Vista ('85)	23	448
5. 5. *Cupertino ('74)	9	426
6. 8. Fremont ('88)	39	404
7. 6. #Live Oak	4	397
8. 7. Presentation	5	383
9. 11. Leland ('91)	126	308
10. 10. Palo Alto	22	255
11. 12. Homestead ('89)	34	208
12. 1. Lynbrook ('94)	157	157
13. 13. Aptos	0	148
14. 14. St. Francis ('82)	1	117
15. 15. Mountain View	9	94
16. 16. #Pinewood School ('90)	10	83
17. 17. #Prospect ('83)	12	75
18. 18. Saratoga ('93)	36	37

CAPITOL VALLEY

'95 '94 Chapter	New	Total
1. 2. +Marysville	33	410
2. 3. Galt	32	203
3. 4. Oak Ridge	9	171
4. 5. Nevada Union	32	164
5. 6. Sacramento Country Day	5	109
6. 1. Sacramento-Kennedy ('94)	64	64

EAST LOS ANGELES

'95 '94 Chapter	New	Total
1. 2. +San Gabriel ('90)	72	446
2. 3. Damien ('89)	76	441
3. 4. Arcadia ('77)	62	402
4. 5. Schurr	44	373
5. 6. Long Beach Poly	14	289
6. 8. Mark Keppel ('87)	36	287
7. 7. San Marino ('85)	5	277
8. 9. St. Paul	11	251
9. 10. Polytechnic School	9	156
10. 1. Alhambra ('94)	90	90
11. 11. La Mirada ('92)	13	64
11. 12. Rowland	21	64
13. 13. *Gahr ('93)	0	11

SAN FRANCISCO BAY

'95 '94 Chapter	New	Total
1. 2. +San Fran-Lowell ('88)	82	658
2. 3. Miramonte ('90)	134	624
3. 4. St. Vincent ('81)	50	539
4. - #California	132	507
5. 6. College Prep. ('87)	51	474
6. 5. San Fran-Mercy	18	447
7. 7. St. Ignatius ('80)	49	429
8. 8. Sonoma Valley	18	383
9. 9. Del Norte County ('86)	30	370
10. 10. Head-Royce	32	316
11. 12. El Cerrito ('89)	56	305
12. 15. Danville-Monte Vista ('92)	89	296
13. 11. Antioch	0	281
14. 13. El Molino	24	264
15. 14. Sacred Heart Cathedral Prep	15	243
16. 18. Pinole Valley ('91)	57	208
17. 17. *Montgomery	0	175
18. 1. James Logan ('94)	168	168
19. 20. San Fran-Washington ('93)	59	101
20. 21. #Ursuline	9	41
21. 23. Carondelet	0	26
22. - #Analy	7	7

How many of these topics will your class or team debate this year?

These are just a few of the topics covered in The CQ Researcher recently!

Politics and Government:

- ☐ Overhauling Social Security, May 1995
- ☐ Reinventing Government, February 1995
- ☐ Talk Show Democracy, April 1994
- ☐ Testing Term Limits, November 1994

Business and Economics:

- ☐ The Business of Sports, February 1995
- ☐ Economic Sanctions, October 1994
- ☐ Farm Policy, December 1994
- ☐ Regulating the Internet, June 1995

Education:

- ☐ Arts Funding, October 1994
- ☐ Education and Gender, June 1994
- ☐ Home Schooling, September 1994
- ☐ Learning to Read, May 1995
- ☐ Parents and Education, January 1995

Health and Wellness:

- ☐ Abortion Battle, April 1995
- ☐ Combating AIDS, April 1995
- ☐ Combating Infectious Disease, June 1995
- ☐ Primary Care, March 1995
- ☐ "Right to Die" Controversy, April 1995

Science and the Environment:

- ☐ Earthquake Research, December 1994
- ☐ Genetically Engineered Foods, August 1994
- ☐ Historic Preservation, October 1994
- ☐ Nuclear Arms Cleanup, June 1994
- ☐ Public Land Policy, June 1994

Social, Ethnic and Civil Rights Issues:

- ☐ Child Custody and Support, November 1995
- ☐ Courts and the Media, September 1994
- ☐ Cracking Down on Immigration, February 1995
- ☐ Crime Victims' Rights, July 1994
- ☐ Death Penalty Debate, March 1995
- ☐ Religion in America, November 1994
- ☐ Rethinking Affirmative Action, April 1995
- ☐ War Crimes, July 1995

Get your students started right with The CQ Researcher, the source that offers background, outlook, pros and cons, a chronology and two bibliographies on a different current topic every week!

Single copies of The CQ Researcher are available for just \$7.00 each — order now!

"The pro and con treatment of the issues is most useful because it forces the students to think. We often tell them that a good debater always knows what the opposing debater is going to argue. Forewarned is forearmed. We love your expert handling of the issues."

— Johnnie Margurite Boyd
George Wythe High School, Richmond, VA

To order: Please return this entire page or a photocopy to Congressional Quarterly Inc. Attn: Kim Goldberg, Department RT, 1414 22nd Street NW, Washington, D.C. 20037

Name: _____
Title: _____
School: _____
Phone: (_____) _____
Address: _____
City: _____
State: _____ ZIP: _____

Total _____ x \$7.00 = \$ _____
Plus 5.75% sales tax (D.C. only) \$ _____
Total = \$ _____

☐ Bill me P.O. number: _____
Authorized signature: _____
☐ Check enclosed. Please make payable to Congressional Quarterly Inc.
☐ Please send me subscription information.
☐ Please send subscription information to my library:

Librarian: _____
School: _____
Phone: (_____) _____
Address: _____
City: _____
State: _____ ZIP: _____



For more information or bulk order discounts, call CQ customer service at (202) 887-8621 or (800) 432-2250 ext. 621.

SIERRA

'95	'94	Chapter	New	Total
1.	4.	+Bakersfield-West ('89)	125	665
2.	2.	Fresno-Hoover ('79)	25	625
3.	3.	Sanger	39	592
4.	8.	Edison-Computech	91	483
5.	7.	Fresno-Bullard ('88)	57	476
6.	5.	*Fresno-McLane ('75)	10	441
7.	6.	Fresno-Roosevelt ('72)	15	439
8.	12.	Bakersfield ('92)	138	400
9.	10.	East Bakersfield	44	389
10.	9.	Reedley	22	384
11.	11.	Fresno ('85)	20	299
12.	15.	Bakersfield-Highland ('91)	54	164
13.	18.	Centennial	120	156
14.	13.	Bakersfield-South ('86)	20	139
15.	14.	San Joaquin Memorial ('90)	21	137
16.	16.	Golden West	21	129
17.	17.	Clovis ('93)	49	127
18.	-	#Buchanan	33	85
19.	1.	Clovis-West ('94)	52	52

SOUTHERN CALIFORNIA

'95	'94	Chapter	New	Total
1.	4.	+Colton	92	726
2.	2.	Yucaipa ('82)	32	711
3.	3.	Grossmont ('68)	6	669
4.	5.	San Diego-Madison	0	588
5.	6.	Mt. Carmel	39	579
6.	9.	*Claremont ('83)	71	415
7.	7.	*Mira Mesa	0	408
8.	14.	Redlands ('92)	99	376
9.	12.	San Dieguito ('90)	64	363
10.	10.	Upland	27	357
11.	13.	Temecula Valley	15	309
12.	15.	Mount Miguel ('78)	25	289
13.	16.	Oceanside ('74)	33	263
14.	19.	San Geronio ('91)	41	234
15.	18.	San Diego-Patrick Henry ('85)	2	223
16.	21.	*Spring Valley-Monte Vista ('86)	5	142
17.	22.	The Bishop's School	10	105
18.	23.	Gompers Secondary School	0	86
19.	25.	Holtville ('93)	26	69
20.	1.	Bonita Vista ('94)	47	47

WEST LOS ANGELES

'95	'94	Chapter	New	Total
1.	2.	+Taft	87	753
2.	3.	Cleveland ('67)	44	688
3.	4.	Royal	0	596
4.	5.	Gardena ('87)	62	564
5.	6.	*Van Nuys-Birmingham ('71)	19	507
6.	7.	La Reina	10	462
7.	7.	Harvard-Westlake Middle	9	461
8.	9.	Burbank	2	426
9.	10.	Newbury Park	9	404
10.	11.	Thousand Oaks	21	386
11.	12.	Bishop Montgomery ('74)	37	355
12.	13.	El Camino Real	27	330
13.	15.	Los Angeles-Marshall ('84)	39	317
14.	14.	San Pedro	0	283
15.	16.	#Notre Dame ('77)	0	268
16.	17.	*Marlborough School	1	249
17.	19.	Loyola ('90)	58	243
18.	18.	Camarillo ('82)	4	217
19.	20.	Granada Hills	30	179
20.	21.	*Santa Clara	0	133
21.	22.	Harvard-Westlake Upper School ('91)	46	127
22.	23.	Arroyo Grande ('93)	56	119
23.	1.	S O Center Enriched Studies ('94)	85	85
24.	24.	*Reseda	2	54
25.	25.	*Simi Valley ('92)	0	29

COLORADO

'95	'94	Chapter	New	Total
1.	3.	+Ponderosa	58	508
2.	2.	Denver-Lincoln ('74)	16	494
3.	4.	Smoky Hill	17	459
4.	5.	Thomas Jefferson ('80)	21	437
5.	8.	Chatfield Sr.	40	425
6.	7.	Arapahoe ('84)	15	422
7.	6.	Denver-South ('74)	1	409
8.	15.	Cherry Creek ('92)	146	348
9.	9.	Rangeview	37	337
10.	10.	Gateway	32	325
11.	12.	Douglas County	26	295
12.	14.	Overland ('90)	56	294
13.	11.	*Alameda	1	291
14.	13.	Heritage ('86)	33	280
15.	17.	Highlands Ranch	42	226
16.	16.	*Englewood	8	202
17.	18.	Mullen ('91)	55	192
18.	19.	Littleton ('89)	9	133
19.	1.	Columbine ('94)	73	73
20.	20.	Aurora Central ('93)	4	31

ROCKY MOUNTAIN NORTH

'95	'94	Chapter	New	Total
1.	2.	+Rocky Mountain	38	617
2.	3.	Thompson Valley	12	531
3.	4.	Greeley Central ('64)	74	528
4.	-	#Boulder	16	457
5.	5.	Greeley West	32	429
6.	7.	Steamboat Springs	17	386
7.	6.	#Centaurus	11	383
8.	8.	Loveland ('81)	24	363
9.	9.	Fort Collins ('83)	43	344
10.	10.	Skyline ('90)	37	280
11.	11.	Denver-North ('89)	16	243
12.	12.	Standley Lake	59	241
13.	13.	Niwot ('91)	36	181
14.	14.	Longmont ('92)	40	173
15.	15.	Weld Central	11	130
16.	-	#Fairview	39	122
17.	1.	Pomona ('94)	42	42
18.	16.	Poudre ('93)	13	25

ROCKY MOUNTAIN SOUTH

'95	'94	Chapter	New	Total
1.	2.	+Arvada	18	566
2.	3.	Denver-Washington ('82)	46	553
3.	4.	Denver-Manual	34	518
4.	6.	Evergreen	53	480
5.	5.	Lakewood ('88)	44	474
6.	7.	#Wheat Ridge ('78)	12	411
7.	9.	Arvada-West ('84)	18	380
8.	8.	*Jefferson	0	365
9.	11.	Green Mountain ('87)	18	364
10.	14.	Golden ('92)	94	298
11.	12.	Regis Jesuit ('77)	12	271
12.	13.	*Montbello	5	222
13.	16.	Eaglecrest School	61	178
14.	15.	Denver-East ('91)	22	145
15.	17.	Moffat County ('93)	63	113
16.	1.	Bear Creek ('94)	66	66

SOUTHERN COLORADO

'95	'94	Chapter	New	Total
1.	2.	+Air Academy	39	476
2.	3.	Montrose	45	449
3.	4.	Woodland Park	41	429
4.	6.	Sierra	48	423
5.	5.	Fruita Monument	24	406
6.	7.	Trinidad ('80)	0	341
7.	9.	Rampart	44	340
8.	8.	Widfield ('84)	31	332
9.	11.	Doherty ('88)	15	304
10.	12.	Palmer	20	298
11.	10.	*Harrison ('82)	0	295

12.	13.	*Grand Junction Central ('81)	7	275
13.	14.	Canon City ('86)	38	224
14.	15.	Grand Junction ('88)	32	217
15.	16.	Palisade	39	211
16.	-	#Lamar	36	206
17.	17.	Pueblo County ('87)	18	189
18.	18.	Rye	24	181
19.	20.	La Junta ('89)	25	168
19.	19.	Liberty	18	168
21.	21.	*Pueblo-South ('83)	5	142
22.	23.	Pueblo-Centennial ('91)	26	130
23.	22.	St. Mary's	12	128
24.	24.	*Montezuma-Cortez ('88)	8	99
25.	25.	Trinidad-Catholic ('85)	10	69
26.	1.	Durango ('94)	46	46
27.	27.	#Pueblo-East ('93)	26	35
28.	28.	Wasson ('92)	5	13
29.	-	#Lewis-Palmer	12	12

FLORIDA MANATEE

'95	'94	Chapter	New	Total
1.	2.	+Atlantic	34	682
2.	3.	Taravella	99	608
3.	4.	Wellington	29	509
4.	5.	South Plantation	47	478
5.	6.	*Vero Beach	0	430
6.	7.	University School	68	382
7.	8.	Jupiter	50	358
8.	11.	Nova ('91)	84	356
9.	9.	Coral Springs	38	332
10.	12.	St. Thomas Aquinas	50	321
11.	10.	Pine Crest Prep ('89)	25	311
12.	-	#Suncoast	104	284
13.	14.	Palm Beach Lakes ('90)	28	270
14.	13.	Forest Hill	3	263
15.	15.	Palm Beach Gardens	0	223
16.	17.	Lake Highland Prep	46	186
17.	19.	Lake Mary	29	134
18.	1.	Martin County ('94)	123	123
19.	18.	Dr. Phillips	0	106
19.	-	#Palm Beach Co School of the Arts	63	106
21.	22.	*Colonial ('93)	1	24

FLORIDA SUNSHINE

'95	'94	Chapter	New	Total
1.	2.	+Pine View School	26	508
2.	6.	Academy of the Holy Names ('91)	91	428
3.	3.	Tampa-Jesuit ('88)	20	422
4.	5.	Gaither	40	384
5.	4.	*Chamberlain	0	361
6.	9.	Pensacola	44	306
7.	8.	Winter Park ('89)	25	292
8.	7.	Spanish River	0	275
9.	12.	Sarasota-Riverview ('92)	90	269
10.	10.	*Sandalwood	23	267
11.	11.	*Sarasota ('79)	9	251
12.	13.	Hillsborough	12	141
13.	14.	Lakeland Christian School	5	89
14.	15.	Bloomington	1	80
15.	1.	Buchholz ('94)	72	72
16.	16.	*Southeast	9	50
17.	17.	Palmetto	0	24
18.	18.	*Tampa-Robinson ('90)	0	20
19.	19.	Terry Parker ('93)	0	8

SOUTH FLORIDA

'95	'94	Chapter	New	Total
1.	2.	+Miami-Palmetto Junior	139	683
2.	3.	Miami-Killian	67	563
3.	4.	North Miami ('67)	28	483
4.	6.	*St. Brendan	0	414
5.	7.	Coral Gables Sr. ('82)	19	382
6.	8.	Gulliver Preparatory	3	282
7.	9.	Christopher Columbus	15	260
8.	10.	Braddock	14	195

9.	13.	Miami-Palmetto ('93)	79	150
10.	11.	Miami Beach ('91)	4	125
11.	12.	*Southwood Junior	0	80
12.	14.	Southwest Miami Sr. ('92)	18	74
13.	14.	Homestead	0	56
14.	-	#Our Lady of Lourdes Acad	16	46
15.	1.	North Miami Beach ('94)	21	21

GEORGIA NORTHERN MOUNTAIN (New District)

'95 '94	Chapter	New	Total
1.	- +Gainesville	52	347
2.	- South Gwinnett	46	333
3.	- Westminster Schools ('90)	40	327
4.	- Snellville-Brookwood	37	308
5.	- Pace Academy	18	284
6.	- Central Gwinnett	13	210
7.	- *Parkview ('84)	7	189
8.	- #Etowah	27	119
9.	- North Gwinnett	3	104
10.	- Gordon Central	12	96
11.	- #Harper	24	91
12.	- *Darlington School	0	83
13.	- Calhoun ('91)	19	81
14.	- Milton	16	80
15.	- Ridgeland	16	60
16.	- Grady ('94)	34	34

GEORGIA SOUTHERN PEACH (New District)

'95 '94	Chapter	New	Total
1.	- +Carrollton ('87)	53	399
2.	- Northside ('81)	17	323
3.	- Thomas County Central	43	320
4.	- Brunswick	10	301
5.	- Mary Persons	0	298
6.	- Woodward Academy ('86)	34	220
7.	- Valdosta	19	179
8.	- Harlem	31	173
9.	- Lee County ('88)	35	144
10.	- Therrell	26	123
11.	- Appling County	0	122
12.	- #La Grange	2	109
13.	- #Lowndes	24	96
14.	- Dublin	26	94
14.	- Houston County	17	94
16.	- Warner Robins ('92)	26	86
17.	- Perry	0	80
18.	- *Pacelli	11	70
19.	- Glynn Academy ('93)	27	68
20.	- #Pike County	22	48
21.	- #Sandy Creek	27	27
22.	- #McIntosh County Academy	13	13

HAWAII

'95 '94	Chapter	New	Total
1.	2. +Punahou School ('88)	44	324
2.	3. St. Louis	11	279
3.	4. Radford ('87)	23	239
4.	5. McKinley	27	218
5.	6. Baldwin ('86)	24	213
6.	8. University Lab School	27	174
7.	7. St. Andrew's Priory	0	167
8.	9. Iolani School ('89)	21	165
9.	10. Aiea	34	163
10.	- #Waialua	0	138
11.	11. Moanalua	28	113
12.	16. Kamehameha Schools ('91)	49	98
13.	12. Maryknoll	7	86
14.	13. Kaiser	8	78
15.	14. Pearl City	0	69
16.	15. St. Francis	7	64
17.	16. Hawaii Prep Academy	5	54
18.	21. Damien Memorial ('93)	26	49
19.	18. Kahuku	1	44
20.	19. Leilehua ('90)	0	37
21.	23. Castle ('92)	14	25

22.	20.	*Farrington	0	24
23.	22.	Waiakea	6	23
24.	1.	Sacred Hearts Academy ('94)	19	19

IDAHO

'95 '94	Chapter	New	Total
1.	2. +Idaho Falls ('84)	46	648
2.	3. South Fremont	35	625
3.	5. Meridian ('82)	105	613
4.	7. Centennial	77	551
5.	4. Madison ('79)	15	550
6.	6. Pocatello ('85)	40	516
7.	8. Ontario, OR	13	483
8.	11. Boise ('89)	83	480
9.	10. North Fremont	23	434
10.	9. Nampa Sr. ('83)	12	427
11.	12. Snake River	30	414
12.	15. Blackfoot ('87)	71	398
13.	13. Kuna	40	395
14.	14. Highland ('86)	20	348
15.	17. Idaho Falls-Skyline ('90)	80	315
16.	16. Jerome	16	260
17.	18. Rigby	16	231
18.	19. Idaho Falls-Bonneville ('91)	2	161
19.	21. Hillcrest	39	124
20.	20. Twin Falls ('92)	16	104
21.	22. Arco Butte ('93)	33	62
22.	1. Capital ('94)	37	37

GREATER ILLINOIS

'95 '94	Chapter	New	Total
1.	2. +McHenry	6	316
2.	4. University ('84)	13	241
3.	5. Freeport ('83)	16	238
4.	- #Normal Community	55	222
5.	6. Red Bud	6	220
6.	8. O'Fallon Twp. ('87)	42	213
7.	9. Granite City Sr. ('88)	41	208
8.	7. Crystal Lake-South	15	195
9.	10. Belleville-West ('91)	28	193
10.	11. Belleville-East ('90)	43	184
11.	12. Pekin Comm. ('92)	27	165
12.	13. Paxton-Buckley-Loda	41	155
13.	15. Heyworth ('93)	51	97
14.	14. Woodstock	16	90
15.	1. Pontiac Township ('94)	23	23

ILLINI

'95 '94	Chapter	New	Total
1.	2. +Wheeling	64	879
2.	3. Downers Grove-South ('91)	185	853
3.	5. Thornridge ('79)	40	689
4.	4. Reavis	27	685
5.	6. Thornwood ('78)	36	655
6.	8. St. Ignatius College Prep. ('85)	28	615
7.	7. Glenbard-South	13	603
8.	10. Wheaton Warrenville South ('84)	3	479
9.	12. Oak Park-River Forest ('87)	34	374
10.	11. Naperville Central	29	372
11.	13. Wheaton-North ('92)	66	233
12.	17. Homewood-Flossmoor ('93)	98	186
12.	14. Carl Sandburg	56	186
14.	15. Lyons Twp. ('90)	30	153
15.	16. Downers Grove-North ('88)	24	129
16.	- #Romeoville	75	105
17.	1. Thornton Township ('94)	60	60

NORTHERN ILLINOIS

'95 '94	Chapter	New	Total
1.	2. +New Trier ('87)	117	785
2.	4. Prospect ('77)	33	659
3.	3. Niles-West	13	655
4.	5. Dundee-Crown	27	629
5.	7. Rolling Meadows	39	605
6.	8. *Buffalo Grove	0	556

7.	9.	Evanston Twp. ('83)	36	524
8.	10.	Deerfield ('82)	17	502
9.	12.	Maine Twp. East ('86)	41	454
10.	13.	Regina Dominican	37	439
11.	11.	*Maine Township-West	0	432
12.	14.	#Gordon Technical	44	419
13.	15.	Glenbrook-North ('91)	132	412
14.	16.	St. Charles	24	247
15.	18.	Highland Park ('89)	32	233
16.	17.	Lake Forest	11	228
17.	19.	#Elk Grove ('88)	66	176
18.	20.	Glenbard-West ('93)	59	144
19.	1.	Glenbrook-South ('94)	101	101
20.	21.	#Loyola Academy ('90)	35	74
21.	22.	Niles-North ('92)	15	36

HOOSIER CENTRAL

'95 '94	Chapter	New	Total
1.	2. +Wabash-Southwood ('80)	25	763
2.	3. West Lafayette	27	750
3.	4. Rossville	43	741
4.	5. Oak Hill	27	637
5.	6. Marion	37	571
6.	7. Kokomo-Sa. Campus ('87)	32	501
7.	8. McCutcheon	12	449
8.	10. Muncie-Central	28	402
9.	12. Logansport ('89)	84	398
10.	11. Ind'pls-North Central ('85)	32	391
11.	14. Hamilton Heights	47	294
12.	13. Lafayette Central Catholic	24	289
13.	15. Attica	47	259
14.	17. Peru ('88)	22	226
15.	16. Muncie Burris	3	210
16.	18. Maconaquah ('91)	39	177
17.	1. Brebeuf Prep ('94)	90	90
18.	20. Harrison ('93)	24	54
18.	19. Lafayette-Jefferson ('92)	0	54

HOOSIER SOUTH

'95 '94	Chapter	New	Total
1.	3. +Carmel	39	771
2.	2. Rushville Consolidated ('82)	2	765
3.	4. North Posey	40	699
4.	6. Evansville-Mater Dei	67	690
5.	5. Warren Central ('73)	30	680
6.	7. Evansville-North	49	596
7.	8. Perry Meridian	42	541
8.	13. Ben Davis ('92)	173	507
9.	9. Connersville Sr.	16	486
10.	10. Ind-pls-Technical ('77)	0	459
11.	- #Evansville Central	41	458
12.	13. Lawrence Central ('88)	55	358
13.	11. Columbus East	0	336
14.	14. Reitz Memorial	35	330
15.	1. Evansville-Reitz ('94)	251	251
16.	16. Chrysler ('93)	48	120
17.	17. Evansville-Harrison ('91)	39	61

NORTH EAST INDIANA

'95 '94	Chapter	New	Total
1.	2. +Snider	54	542
2.	3. Fort Wayne-Northside ('73)	33	469
3.	4. #Elmhurst ('71)	25	433
4.	5. Concord ('84)	34	404
5.	6. Huntington North	29	392
6.	7. Fort Wayne-Northrop ('90)	57	365
7.	8. Homestead	28	321
8.	9. East Noble	22	307
9.	11. Chesterton ('93)	165	306
10.	11. New Haven ('85)	17	278
11.	10. *Riley	0	272
12.	12. Canterbury	28	251
13.	13. Columbia City ('89)	45	240
14.	17. Fort Wayne-South Side ('92)	55	128
15.	15. #Concordia Lutheran	28	106
16.	18. Norwell	46	79
17.	15. Howe Military School ('91)	0	78
18.	1. Lakeland ('94)	45	45

NORTH WEST INDIANA

'95 '94	Chapter	New	Total
1. 2.	+Plymouth ('89)	124	611
2. 4.	Valparaiso	40	494
3. 3.	Elkhart Memorial	3	476
4. 5.	Highland ('82)	5	435
5. 6.	Penn	46	425
6. 7.	Merrillville	35	409
7. 9.	Hammond ('86)	23	307
8. 10.	Portage	24	302
9. 8.	Goshen	0	295
10. 11.	Hammond-Morton ('83)	0	254
11. 15.	La Porte ('91)	85	232
12. 14.	DeKalb ('90)	50	198
13. 12.	Kankakee Valley	26	196
14. 18.	Northfield ('92)	74	188
15. 16.	*North Newton	9	146
16. 1.	Munster ('94)	132	132
17. 19.	Lake Central	5	64
18. 20.	Elkhart Central ('93)	28	33

EAST IOWA

'95 '94	Chapter	New	Total
1. 3.	+Keokuk	29	529
2. 2.	#Durant	9	519
3. 4.	Cedar Falls ('75)	22	499
4. 8.	Iowa City ('83)	52	484
5. 5.	Clinton ('77)	8	477
6. 7.	Burlington Community ('81)	34	473
6. 6.	Wahlert	31	473
8. 10.	Davenport Central ('86)	57	434
9. 9.	Davenport-North	22	423
10. 12.	Iowa City-West ('87)	58	392
11. 11.	Cedar Rapids-Kennedy	3	351
12. 16.	Muscatine ('91)	70	309
13. 15.	Marshalltown ('90)	43	286
14. 14.	Ottumwa ('88)	26	274
15. -	#Wilton Community ('80)	17	225
16. 17.	Mason City ('89)	1	145
17. 18.	Bettendorf ('93)	50	124
18. 19.	Davenport-West ('92)	39	110
19. 20.	Fort Madison	13	76
20. -	#East Buchanan	9	9
20. 1.	Cedar Rapids-Washington ('94)	9	9

WEST IOWA

'95 '94	Chapter	New	Total
1. 2.	+Fort Dodge ('77)	18	496
2. 4.	West Des Moines-Valley ('88)	79	495
3. 3.	Des Moines-Lincoln ('87)	48	466
4. 5.	Denison ('76)	8	402
5. 6.	Spencer ('85)	20	382
6. 7.	Roosevelt ('83)	18	361
7. 8.	Anita ('84)	31	350
8. 10.	Spirit Lake	23	305
9. 9.	Sioux City-West	10	297
10. 13.	East Des Moines ('86)	43	258
11. 11.	Sioux City-East ('80)	7	254
12. 14.	Kuemper	30	241
13. 15.	Le Mars Community ('91)	47	234
14. 16.	Okoboji Community School	52	232
15. 17.	Atlantic ('89)	25	185
16. -	#Des Moines North	34	118
17. 18.	Council Bluffs-Lincoln ('92)	30	102
18. 19.	Cherokee-Washington ('93)	47	91
19. 1.	Bishop Heelan Catholic ('94)	58	58
20. 20.	Sioux City-North ('90)	0	37

EAST KANSAS

'95 '94	Chapter	New	Total
1. 2.	+Shawnee Mission East ('84)	65	839
2. 3.	Fort Scott ('83)	67	820
3. 5.	Shawnee Mission-South ('86)	114	787
4. 4.	Pittsburg ('80)	38	778

5. 7.	Shawnee Mission Northwest ('89)	196	743
6. 6.	Olathe-South	17	672
7. 10.	Shawnee Mission-West ('92)	134	538
8. 8.	Schlagle	0	515
9. 9.	Blue Valley North	50	481
10. 11.	J. C. Harmon	12	412
11. 13.	Olathe-North ('82)	59	397
12. 12.	Spring Hill	30	369
13. 14.	Pittsburg-Colgan	38	362
14. 15.	Leavenworth ('85)	32	327
15. 21.	Blue Valley Northwest	176	288
16. 16.	Kansas City-Washington ('88)	51	266
17. 17.	Shawnee Mission North ('90)	63	252
18. 18.	Bishop Miege ('91)	67	228
19. 19.	St. Thomas Aquinas	57	210
20. 20.	*Turner	23	159
21. 22.	Olathe East	46	122
22. 23.	Blue Valley ('93)	51	115
23. 1.	Sumner Academy ('94)	89	89

FLINT HILLS KANSAS

'95 '94	Chapter	New	Total
1. 2.	+Washburn Rural ('86)	154	912
2. 4.	Topeka ('89)	141	794
3. 3.	Shawnee Heights ('84)	54	784
4. 5.	Topeka-Seaman ('85)	77	619
5. 7.	Emporia ('88)	78	545
6. 6.	Highland Park ('82)	16	526
7. 9.	Silver Lake	56	496
8. 8.	Wamego	18	467
9. 12.	Lawrence ('92)	136	368
10. 10.	Rossville	12	311
11. 14.	Topeka-West ('91)	97	305
12. 13.	St. Mary's	26	246
13. 11.	Baldwin	0	241
14. 15.	Gardner-Edgerton	21	175
15. 16.	Tonganoxie	0	110
16. 17.	Hayden ('93)	22	81
17. 1.	Osage City ('94)	24	24

SOUTH KANSAS

'95 '94	Chapter	New	Total
1. 2.	+Fredonia	27	919
2. 3.	Derby ('75)	37	896
3. 4.	Wichita-South ('78)	43	736
4. 5.	Wichita-Southeast ('86)	58	732
5. 6.	Goddard	33	615
6. 7.	Parsons ('87)	41	536
7. 8.	Winfield ('84)	36	405
8. 9.	Wichita-North ('83)	26	369
9. 10.	Arkansas City	26	362
10. 12.	Wichita Heights ('90)	68	358
11. 11.	*Independence	0	309
12. 13.	Caney Valley	24	290
13. 14.	Wichita Northwest	54	276
14. 15.	Valley Center ('91)	30	164
15. 16.	Wichita-East ('92)	41	143
16. 17.	Field Kindley ('93)	59	128
17. -	#Andover	44	87
18. 1.	Wichita-Campus ('94)	35	35

WEST KANSAS

'95 '94	Chapter	New	Total
1. 2.	Junction City	0	835
2. 3.	+Concordia	49	820
3. 4.	Moundridge	29	747
4. 5.	Buhler	51	683
5. 7.	Salina-South ('87)	100	651
6. 6.	Ulysses	18	609
7. 8.	Great Bend ('82)	34	574
8. 9.	Salina-Central ('89)	75	567
9. -	#Chaparral	69	552
10. 11.	McPherson ('85)	76	537
11. 10.	Hays ('88)	47	522
12. 13.	Manhattan ('90)	71	378
13. 14.	Garden City ('91)	102	372

14. 12.	Haven	42	369
15. 17.	Hutchinson ('92)	99	286
16. 15.	Remington	39	285
17. 16.	Russell ('80)	10	241
18. 18.	Maize	74	232
19. 19.	Thomas More Prep-Marian	26	172
20. 23.	El Dorado ('93)	88	169
21. 22.	Liberal	67	152
22. 21.	Bishop Carroll	0	121
23. 1.	Abilene ('94)	27	27

KENTUCKY

'95 '94	Chapter	New	Total
1. 3.	+Rowan County Sr.	53	377
2. 7.	Boone County	32	337
3. 6.	Scott County ('80)	15	334
4. 4.	*Montgomery County	0	322
5. 11.	Trinity ('89)	44	290
6. 10.	Lafayette	38	288
7. 8.	Jessamine County	4	283
8. 13.	Calloway County ('87)	33	262
9. 9.	Paducah-Tilghman ('76)	8	261
10. 12.	Bullitt Central ('83)	12	252
11. 14.	Murray ('90)	33	222
12. 15.	Russellville ('78)	15	194
13. 17.	Tates Creek	13	178
14. 18.	Du Pont Manual	0	116
15. 19.	Paul Laurence Dunbar	0	109
16. 21.	Warren East ('91)	34	103
17. 20.	Beechwood	1	93
18. 24.	Larue County ('92)	33	47
19. 22.	Jeffersontown	0	44
20. 23.	Lexington-Clay ('93)	12	27
21. 1.	Harrison County ('94)	10	10

LOUISIANA

'95 '94	Chapter	New	Total
1. 2.	+Bolton ('77)	50	546
2. 3.	Comeaux ('84)	36	463
3. 4.	New Orleans-Jesuit ('80)	33	427
4. 6.	Lafayette ('86)	48	390
5. 7.	Riverdale	34	362
5. 5.	Holy Cross	9	362
7. 9.	Barbe	28	326
8. 8.	*Cecilia	8	321
9. 10.	Alexandria Sr.	3	297
10. 14.	St. Thomas More ('89)	48	273
11. 13.	New Iberia ('85)	25	253
12. 11.	*St. Louis Catholic ('81)	0	237
13. 12.	*Lafayette-Northside	0	236
14. 15.	Loyola College Prep ('88)	12	195
15. 16.	St. Martin's Episcopal School	29	191
16. 17.	St. Mary's Academy	0	151
17. 20.	Ruston ('90)	41	146
18. 18.	Pineville ('91)	0	137
19. 19.	Tioga	0	124
20. 22.	Lafayette-Acadiana ('92)	38	122
21. 21.	Episcopal School of Acadiana	15	105
22. 23.	Newman School ('93)	23	73
23. 1.	Caddo Magnet ('94)	59	59

MAINE

'95 '94	Chapter	New	Total
1. 2.	Cape Elizabeth ('91)	91	298
2. 3.	+Lewiston ('86)	35	230
3. 6.	Brunswick ('90)	43	185
4. 5.	Scarborough	27	171
5. 4.	*St. Dominic's Regional	0	167
6. 10.	Bangor	26	118
7. 7.	*Gorham	0	112
8. 8.	Mt. Ararat School	7	107
9. 14.	Monmouth Academy ('93)	36	75
10. 13.	Edward Little ('89)	8	74
11. 12.	Noble	0	73
12. 15.	Deering ('92)	13	35
13. 1.	Oxford Hills ('94)	27	27

MICHIGAN

'95 '94	Chapter	New	Total
1. 2.	+Plymouth Canton Educ Park	29	420
2. 3.	Troy-Athens	9	327
3. 5.	Portage-Northern ('91)	68	297
4. 6.	Battle Creek Central ('89)	56	271
5. 7.	Kalamazoo-Loy Norrix ('88)	43	250
6. 4.	*Southfield-Lathrup ('83)	0	238
7. 9.	East Grand Rapids	51	210
8. 8.	Mona Shores ('85)	0	190
9. -	#Jackson	7	187
10. 10.	Garber ('87)	0	103
11. 11.	*Birmingham-Seaholm ('90)	8	101
12. 1.	Portage Central ('94)	78	78
13. 12.	Northville	0	61
14. 13.	East Kentwood	14	43
15. 14.	Beverly Hills-Groves ('92)	0	13
16. 15.	*Detroit Catholic Central ('93)	0	0

MID ATLANTIC

'95 '94	Chapter	New	Total
1. 6.	+Monacan, VA	59	410
2. 4.	Walter Johnson, MD	23	400
3. 3.	Wheaton, MD ('74)	2	381
4. 5.	West Springfield, VA ('77)	19	380
5. 8.	Whitman, MD ('86)	33	346
6. 11.	Prince Edward County, VA	29	297
7. 9.	*St. John's College, DC	2	288
8. 10.	Lee, VA	17	286
9. -	#James Madison	91	257
10. 14.	Edison, VA ('91)	79	251
11. 12.	James Wood, VA ('88)	17	233
12. 13.	Jefferson HS Science, VA	0	203
13. 14.	Georgetown Day, DC	4	176
14. 18.	Lake Braddock, VA ('90)	38	175
15. 16.	Williams, VA	0	155
16. 17.	Richard Montgomery, MD	4	148
17. 22.	Centreville, VA	35	141
18. 20.	Holy Cross, VA	17	135
19. 26.	Blacksburg, VA ('93)	66	125
20. 21.	St. Stephen's & St. Agnes, VA	0	108
21. 23.	Robinson, VA ('87)	0	83
22. 24.	Quince Orchard, MD	7	79
23. 25.	Montgomery Blair, MD	0	60
23. 29.	Sherando, VA	31	60
25. 27.	Colonel Zadok Magruder, MD	1	58
26. 1.	Winston Churchill, MD ('94)	32	32

PATRICK HENRY

'95 '94	Chapter	New	Total
1. 2.	+Bethel	13	283
2. 3.	*Hampton	9	268
3. 4.	Salem	12	258
4. 5.	Kempsville	18	195
5. 6.	Essex	13	175
6. 7.	Poquoson	22	143
7. 9.	Tallwood	26	119
8. 8.	Western Branch	2	112
9. 12.	Princess Anne	38	99
10. 10.	*Norfolk Christian Schools	10	97
11. 11.	Cox	24	86
12. 16.	First Colonial ('93)	23	61
13. 13.	Green Run ('91)	0	56
14. 19.	Bayside ('92)	21	55
15. 18.	Hampton Roads Academy	8	45
16. 14.	Granby	0	41
17. 15.	Menchville	0	40
18. 16.	Greenbrier Christian Academy	0	38
19. 1.	Great Bridge ('94)	22	22

CENTRAL MINNESOTA

'95 '94	Chapter	New	Total
1. 4.	Apple Valley ('91)	107	559
2. 5.	+Anoka ('89)	88	522
3. 3.	Roseville ('81)	57	517

4. 6.	Circle Pines-Centennial	80	509
5. 7.	St. Paul Acad. & Summit	38	339
6. -	#St. Thomas Academy	16	327
7. 8.	Como Park	7	304
8. 9.	Richfield Sr. ('75)	0	281
9. 10.	South St. Paul ('84)	52	276
10. 14.	Forest Lake ('93)	162	263
11. 11.	Mounds Park Academy	37	256
12. 12.	Park Sr. ('90)	42	249
13. 13.	*Cotter	0	109
14. 15.	Coon Rapids ('92)	28	91
15. -	#Annandale	28	59
16. 2.	Mounds View ('94)	13	13

NORTHERN LIGHTS

'95 '94	Chapter	New	Total
1. 3.	+Brainerd ('79)	56	573
2. 6.	Barnesville	10	430
3. 5.	Hibbing ('74)	6	429
4. 7.	International Falls ('78)	34	405
5. 11.	Walker ('86)	89	403
6. 8.	Park Rapids	42	399
7. 10.	Alexandria-Jefferson	58	380
8. 9.	Dilworth-Glyndon-Felton	27	352
9. 13.	Duluth East ('89)	53	328
10. 12.	Duluth-Central ('82)	20	298
11. 14.	Moorhead ('88)	38	294
12. 15.	Fosston	65	231
13. 20.	Grand Rapids ('93)	80	169
14. 16.	Bemidji	2	163
15. 17.	Proctor	11	117
16. 19.	Aitkin ('87)	22	116
17. 22.	The Marshall School	33	101
18. 21.	Staples	17	95
19. 23.	Cass Lake-Bena	7	47
20. 1.	Duluth-Denfeld ('94)	30	30

SOUTHERN MINNESOTA

'95 '94	Chapter	New	Total
1. 4.	+Eagan	128	645
2. 2.	Chaska	22	625
3. 6.	Rosemount Sr. ('88)	106	539
4. 3.	Lakeville ('80)	3	529
5. 5.	Wayzata	49	523
6. 8.	Dassel-Cokato ('85)	80	416
7. 7.	Hopkins ('84)	51	394
8. 10.	The Blake School ('87)	60	369
9. 9.	Osseo Senior	34	355
10. 12.	Austin	32	321
11. 13.	Mankato-Loyola ('86)	22	298
12. 11.	Minnetonka	1	291
13. 14.	Worthington Sr. ('78)	22	286
14. 15.	St. Louis Park	46	284
15. 18.	St. Francis ('91)	63	273
16. 17.	Bloomington-Jefferson ('89)	58	268
17. 16.	Edina ('82)	27	259
18. 19.	Stillwater ('90)	75	218
19. 20.	Benilde-St. Margaret's	60	149
20. 21.	Mankato-West ('92)	37	99
21. 22.	Mankato-East ('93)	54	94
22. 1.	Marshall ('94)	64	64
23. -	#Mayo	29	30

MISSISSIPPI

'95 '94	Chapter	New	Total
1. 3.	+Jackson Prep School	44	281
2. 2.	McComb	15	257
3. 4.	Jackson Academy	20	202
4. 6.	Rowan Junior	36	155
5. 7.	Clinton ('90)	30	148
6. 9.	Watkins ('91)	35	126
7. 5.	Lawrence County	0	124
8. 8.	Brandon	16	108
9. 14.	Byram Attendance Center ('93)	43	84
9. 13.	Gulfport ('92)	30	84
11. 10.	Greene County	10	76

12. 11.	Mississippi School for Math/SC	0	58
13. 12.	Central East, AL	0	57
14. -	#Petal	22	50
15. 15.	Vicksburg	7	47
16. 1.	Hattiesburg ('94)	40	40
17. 16.	Hawkins Jr.	3	37

CARVER-TRUMAN

'95 '94	Chapter	New	Total
1. 3.	+Joplin ('85)	49	558
2. 4.	Republic	38	540
3. 2.	Mt. Vernon	12	522
4. 5.	Carthage	1	497
5. 6.	Diamond	19	495
6. 7.	Cassville ('86)	62	422
7. 8.	Monett ('88)	52	411
8. 9.	Neosho ('91)	83	375
9. 10.	McDonald	29	309
10. 12.	Springdale, AR ('83)	37	266
11. 11.	Carl Junction	15	254
12. 13.	Seneca	12	196
13. 15.	Webb City ('90)	36	166
14. 15.	Fayetteville, AR ('78)	0	130
15. 1.	Nevada ('94)	85	85
16. 19.	Aurora ('93)	25	46
17. 18.	Lamar ('92)	0	43

EAST MISSOURI

'95 '94	Chapter	New	Total
1. 2.	+Horton Watkins ('83)	54	605
2. 4.	Clayton Sr.	45	560
3. 3.	Columbia-Hickman ('79)	27	545
4. 5.	Parkway South ('87)	60	522
5. 6.	Hillsboro	24	471
6. 7.	Parkway North	23	432
7. 8.	Pattonville ('92)	64	423
8. 9.	Howell North	53	377
9. 11.	Ritenour	49	242
10. 10.	Cape Girardeau-Central ('80)	11	221
11. 12.	Rock Bridge	26	216
12. 13.	Ballwin-Lafayette ('91)	46	214
13. 15.	Jefferson City ('88)	27	160
13. 14.	Poplar Bluff Sr.	18	160
15. 16.	Oakville	45	110
16. 17.	Parkway West ('93)	36	99
17. 19.	Marquette	52	88
18. 18.	Chaminade ('89)	17	73
19. 1.	Parkway Central ('94)	52	52

HEART OF AMERICA

'95 '94	Chapter	New	Total
1. 3.	+Independence-Truman ('87)	156	965
2. 2.	Marshall ('81)	136	962
3. 4.	Carrollton	32	588
4. 7.	Liberty Sr.	150	582
5. 5.	Maryville R-II	40	571
6. 6.	Kansas City-Winnetonka	13	538
7. 10.	Park Hill ('91)	120	479
8. 8.	Benton	24	441
9. 9.	Smith Cotton ('76)	31	406
10. 17.	Savannah	32	393
11. 11.	St. Joseph Central ('89)	73	261
12. 12.	Independence-Fort Osage ('90)	15	196
13. 14.	Independence-Chrisman ('92)	54	183
13. 12.	Excelsior Springs	2	183
15. 15.	Kansas City-Oak Park ('93)	93	155
16. 1.	North Kansas City ('94)	107	107
17. 16.	Kansas City-Central	36	88

OZARK

'95 '94	Chapter	New	Total
1. 2.	+Bolivar R-1	8	439
2. 3.	Buffalo	16	437

3.	4.	Camdenton	40	403
3.	5.	Nixa R-2	46	403
5.	9.	Springfield-Glendale ('89)	68	398
6.	5.	Ozark ('84)	23	380
7.	7.	Springfield-Central ('87)	41	377
8.	10.	Kickapoo ('90)	62	376
9.	8.	Willard	12	343
10.	12.	Springfield-Hillcrest ('91)	68	320
11.	11.	Licking	30	302
12.	14.	Houston	38	261
13.	13.	Strafford	12	258
14.	15.	Reeds Spring	38	242
15.	17.	Waynesville ('92)	53	167
16.	16.	#Logan-Rogersville	18	159
17.	18.	West Plains ('93)	41	77
18.	1.	Springfield-Parkview ('94)	48	48

SHOW ME

'95	'94	Chapter	New	Total
1.	4.	+Raytown ('85)	83	774
2.	2.	Kansas City-Center ('83)	30	765
3.	3.	Belton	37	750
4.	6.	Raytown-South ('88)	98	574
5.	5.	#Harrisonville Sr.	26	565
6.	7.	Kansas City-Rockhurst ('89)	65	404
7.	9.	Lee's Summit ('92)	111	374
8.	8.	Notre Dame de Sion	30	331
9.	10.	Blue Springs South	76	256
10.	11.	Raymore-Peculiar	41	216
11.	12.	Pembroke Hill	35	207
12.	15.	Grandview Sr. ('93)	70	122
13.	14.	Ruskin ('91)	23	109
14.	13.	Hickman Mills ('90)	9	105
15.	1.	Blue Springs ('94)	77	77
16.	-	#The Barstow School	36	36

MONTANA

'95	'94	Chapter	New	Total
1.	2.	+Skyview	63	532
2.	3.	Butte ('82)	36	442
3.	5.	Great Falls ('89)	70	409
4.	6.	Flathead Co. ('90)	101	397
5.	4.	Havre ('85)	47	396
6.	9.	Billings Sr.	39	283
7.	14.	Bozeman ('92)	122	281
8.	7.	Missoula-Big Sky	15	266
9.	11.	Bigfork	62	252
10.	8.	*Big Sandy ('80)	5	251
11.	10.	Missoula Hellgate ('87)	27	232
12.	15.	Billings West ('91)	60	216
13.	12.	Polson	18	194
14.	13.	Missoula-Sentinel ('88)	19	184
15.	16.	Beaverhead County	19	156
16.	22.	Park	100	144
17.	20.	Great Falls-Russell ('93)	76	143
18.	17.	Corvallis	22	129
19.	19.	Hamilton	21	96
20.	18.	*Hardin	11	91
21.	-	#Capital	40	89
22.	21.	Shelby	1	66
23.	1.	Helena ('94)	19	19

NEBRASKA (New District)

'95	'94	Chapter	New	Total
1.	-	+Millard-North ('89)	148	859
2.	-	Fremont	33	805
3.	-	Omaha-Marian ('69)	23	658
3.	-	Omaha-Central ('76)	33	658
5.	-	*Mount Michael	0	487
6.	-	Norfolk ('90)	89	471
7.	-	Burke	22	288
8.	-	Grand Island ('79)	18	282
9.	-	Raymond Central	27	236
10.	-	Columbus	20	215
11.	-	Kearney Sr. ('92)	52	171
12.	-	Brownell-Talbot	10	147

13.	-	#V. J. and Angela Skutt Catholic	33	45
-----	---	----------------------------------	----	----

NEBRASKA SOUTH (New District)

'95	'94	Chapter	New	Total
1.	-	+Lincoln	25	720
2.	-	Ralston	31	718
3.	-	Hastings ('81)	58	591
4.	-	Omaha-Bryan	7	475
5.	-	Omaha-Mercy ('78)	28	451
6.	-	Omaha-Westside ('88)	46	445
7.	-	Bellevue-East ('84)	41	432
8.	-	Lincoln-Southeast ('85)	37	427
8.	-	Bellevue-West	17	427
10.	-	Millard-South ('91)	108	303
11.	-	Gross	23	245
12.	-	Papillion-La Vista ('93)	74	134
13.	-	Lincoln-East ('94)	63	63
14.	-	Pawnee City	0	34

NEVADA

'95	'94	Chapter	New	Total
1.	3.	+Douglas	39	342
2.	2.	Elko	27	335
3.	5.	Reed ('87)	55	298
4.	4.	*Whittell	0	268
5.	8.	Incline	38	227
6.	10.	Reno ('91)	69	223
7.	6.	Churchill Co. ('85)	0	222
8.	9.	Las Vegas-Valley ('86)	32	220
9.	7.	*Mineral County	7	216
10.	11.	Green Valley	90	206
11.	13.	Bonanza ('93)	64	149
12.	14.	McQueen ('92)	38	116
13.	15.	Wooster ('90)	5	63
14.	1.	Chaparral ('94)	44	44

NEW ENGLAND

'95	'94	Chapter	New	Total
1.	1.	+Lexington, MA ('90)	106	625
2.	3.	Chelsea, VT	7	386
3.	4.	Catholic Memorial, MA ('87)	7	306
4.	5.	Sacred Heart, MA	0	286
5.	6.	Otter Valley Union, VT	8	284
6.	7.	Barnstable, MA ('79)	0	264
7.	8.	Bishop Guertin, NH ('86)	26	252
8.	10.	Tabor Academy, MA	23	243
9.	9.	Manchester Central, NH	24	242
10.	15.	Acton Boxborough Reg, MA	63	173
11.	16.	Milton Academy, MA ('92)	63	164
12.	12.	Shrewsbury, MA ('91)	21	138
13.	14.	Classical, RI	0	112
14.	2.	Manchester, MA ('94)	97	97
15.	18.	Londonderry, NH	12	60
16.	20.	Hampshire Regional, MA	17	58
17.	19.	Fair Haven Union, VT	5	47
18.	21.	Silver Lake Regional, MA ('93)	16	32
19.	-	#Needham	17	17
20.	-	#Sandwich	11	11

NEW JERSEY

'95	'94	Chapter	New	Total
1.	3.	+Randolph	51	357
2.	2.	Ocean Township	31	352
3.	6.	Long Branch ('84)	41	318
4.	7.	Elizabeth	45	305
5.	5.	Villa Walsh Academy	24	304
6.	4.	*Ridgewood	0	296
7.	8.	Bergenfield	57	283
8.	15.	#Parsippany	6	265
9.	9.	Freehold Township	45	252
10.	10.	Moorestown ('63)	47	232
11.	11.	Montville ('89)	32	215
12.	12.	Barringer	30	167

13.	13.	Science ('91)	31	166
14.	14.	Delbarton School	13	141
15.	16.	*Marlboro ('86)	6	124
16.	17.	Monmouth Reg	0	96
17.	18.	*Rutgers Prep School	0	95
18.	22.	*Parsippany Hills ('90)	15	94
19.	19.	*Morris Knolls ('85)	0	93
20.	20.	Immaculate Conception ('87)	0	86
21.	21.	Matawan Regional ('88)	0	80
22.	23.	Hanover Park ('92)	17	51
23.	24.	Teaneck ('93)	19	49
24.	1.	Bridgewater-Raritan Reg ('94)	25	25
25.	-	#Malcolm X Shabazz	12	12

NEW MEXICO

'95	'94	Chapter	New	Total
1.	-	#Rio Grande	29	578
2.	5.	Albq-Manzano ('76)	63	530
3.	2.	*Santa Fe	5	525
4.	3.	*Gallup	0	509
5.	4.	Jemez Valley	3	482
6.	6.	Farmington ('87)	53	423
7.	7.	La Cueva	41	384
8.	9.	Albuquerque Academy ('91)	98	357
9.	8.	*Albq-Del Norte ('85)	5	334
10.	10.	Albq-Valley ('82)	66	320
11.	11.	Albq-Highland ('83)	43	276
12.	12.	Cibola	9	206
13.	13.	Eldorado ('89)	45	185
14.	14.	Portales	22	160
15.	15.	*Alamogordo ('90)	7	102
16.	16.	Los Alamos ('93)	28	67
17.	1.	Taos ('94)	56	56
18.	17.	Espanola Valley ('92)	16	27

IROQUOIS

'95	'94	Chapter	New	Total
1.	2.	+McQuaid Jesuit ('71)	31	232
2.	3.	Madrid-Waddington Cen.	25	217
3.	4.	New Hartford Central ('90)	19	200
4.	5.	Immaculate Heart Central	25	184
5.	6.	Bishop Kearney ('92)	50	168
6.	7.	Richfield Springs Central ('89)	24	130
7.	8.	Proctor Senior ('88)	0	91
8.	10.	Mount Mercy Academy ('91)	17	75
9.	9.	Nardin Academy	0	74
10.	1.	Webster Sr. ('94)	47	47
11.	11.	Sauquoit Valley ('93)	0	13
12.	12.	*Ithaca	0	3

NEW YORK CITY

'95	'94	Chapter	New	Total
1.	8.	+Stuyvesant ('89)	180	587
2.	6.	Bronx HS of Science ('91)	146	574
3.	2.	Caminade ('88)	94	568
4.	4.	Sacred Heart Academy ('79)	44	497
5.	3.	Mary Louis Academy ('80)	26	496
6.	5.	Hewlett	0	442
7.	7.	Saint Francis Prep School	17	435
8.	9.	Loyola School	35	347
9.	12.	St. Joseph Hill Academy ('85)	36	317
10.	11.	Lynbrook ('84)	18	301
11.	10.	Cathedral Prep Seminary	0	291
12.	13.	Kings Park Sr.	19	264
13.	20.	Regis ('93)	123	245
14.	14.	Half Hollow Hills East	44	235
15.	16.	Hunter College	78	231
16.	17.	Syosset ('92)	79	219
17.	15.	*The Chapin School	0	189
18.	19.	The Calhoun School	24	159
19.	17.	Collegiate School	15	155
20.	21.	*Ward Melville	1	93
21.	1.	Roslyn ('94)	60	60
22.	22.	*Kellenberg Memorial	9	57
23.	23.	#Cardinal Spellman ('90)	17	42

NEW YORK STATE

'95 '94	Chapter	New	Total
1. 1.	+Newburgh Free Academy ('90)	80	368
2. 3.	Lakeland ('89)	50	299
3. 5.	Albany ('88)	37	270
4. 6.	Scarsdale	34	264
5. 4.	Shaker	0	240
6. 8.	Iona Prep School ('84)	46	222
7. 7.	*Ursuline School	20	220
8. 9.	Academy of the Holy Names ('87)	13	160
9. 10.	Wilton, CT	5	147
10. 12.	Monticello ('92)	52	132
11. 11.	Pleasantville	27	114
12. 13.	Shenendehowa ('93)	37	69
13. 2.	Hendrick Hudson ('94)	42	42

CAROLINA WEST

'95 '94	Chapter	New	Total
1. 2.	+Freedom	21	416
2. 3.	#University, TN	19	377
3. 4.	East Mecklenburg	27	374
4. 6.	High Point-Central ('88)	71	356
5. 5.	Ledford ('83)	19	345
6. 8.	Providence	64	334
7. 7.	Chase	18	300
8. 10.	West Charlotte ('89)	43	219
9. 9.	#Winston-Salem Reynolds ('78)	4	212
10. 12.	Independence ('87)	31	198
11. 13.	McDowell	28	193
12. 11.	Ragsdale	19	190
13. 14.	*East Burke ('84)	8	165
14. 15.	Trinity ('90)	32	153
15. 21.	Myers Park ('91)	67	112
16. 18.	High Point-Andrews ('93)	45	108
17. 17.	Abingdon, VA	30	101
18. 16.	*East Rutherford	0	72
19. 19.	Charlotte Latin	18	71
20. 20.	*Westchester Academy	8	56
21. -	#Randleman	18	40
22. 1.	South Mecklenburg ('94)	27	27

TARHEEL EAST

'95 '94	Chapter	New	Total
1. 2.	+Pine Forest	44	474
2. 3.	Byrd Sr.	20	418
3. 5.	Northeast Guilford	51	365
4. 4.	Westover	19	358
5. 6.	Northeastern	52	287
6. 7.	Chapel Hill ('86)	36	241
7. 8.	E. E. Smith	25	214
8. 9.	Cape Fear	24	197
9. 11.	South View Sr. ('92)	37	160
10. 10.	*Terry Sanford	7	152
11. 14.	Northwest Guilford	38	143
12. 12.	Grimsley	9	125
13. 13.	*Southeast Guilford	5	116
14. 15.	Enloe ('93)	36	97
15. 16.	*Southwest Guilford	0	57
16. 1.	71st ('94)	41	41

NORTH DAKOTA ROUGHRIDER

'95 '94	Chapter	New	Total
1. 2.	+Red River	24	396
2. 4.	Langdon	37	326
3. 3.	Wahpeton	22	316
4. 5.	West Fargo	29	273
5. 7.	Beulah	55	183
6. 8.	Fargo Shanley ('91)	45	172
7. 6.	Richardton-Taylor	8	171
8. -	#Washburn	38	135
9. 10.	Grand Forks Central ('90)	28	111
10. 9.	Jamestown	8	96
11. -	#Bismarck Public School	23	82
12. 12.	Linton	20	80

13. 11.	Richland	13	79
14. 14.	Mandan	35	78
15. 15.	Fargo-South ('93)	35	71
15. 13.	Fargo North ('92)	14	71
17. 16.	St. Mary's Central	27	56
18. 1.	Magic City Campus ('94)	45	45

EASTERN OHIO

'95 '94	Chapter	New	Total
1. 2.	+Wooster ('87)	82	675
2. 4.	Carrollton	87	652
3. 5.	Massillon Washington ('67)	47	563
4. 6.	Perry ('89)	103	552
5. 7.	Jackson ('76)	76	523
6. 8.	Wadsworth ('86)	43	478
7. 9.	Copley	23	443
8. 9.	*Sandy Valley	5	425
9. 13.	Hudson	36	406
10. 12.	Timken	6	377
11. 15.	Stow Munroe Falls	88	364
12. 14.	Canton-South ('82)	11	319
13. 16.	Canton Central Catholic ('78)	30	262
14. -	#Heath	13	249
15. 17.	North Canton-Hoover ('88)	37	190
16. 18.	Norton ('91)	36	183
17. 1.	Canton-GlenOak ('94)	143	143
18. 22.	Louisville ('93)	62	118
19. 19.	East Liverpool	2	103
20. 20.	Alliance ('90)	19	93
21. 21.	Canton-McKinley ('92)	16	85

NORTH COAST

'95 '94	Chapter	New	Total
1. 3.	+Rocky River	9	458
2. 4.	Crestwood ('86)	43	450
3. 5.	St. Edward ('74)	21	417
4. 6.	*Brunswick	6	378
5. 7.	Hawken	24	340
6. 10.	Gilmour Academy	85	333
7. 8.	Shaker Heights ('85)	5	274
8. 9.	*Orange	0	253
9. 12.	Cleveland Heights ('90)	60	193
10. 13.	Vermilion	27	158
11. -	#Solon	49	139
12. 15.	St. Ignatius ('92)	43	116
13. 14.	*Berea ('84)	0	82
14. 1.	Shaw ('94)	23	23

NORTHERN OHIO

'95 '94	Chapter	New	Total
1. 2.	+Austintown-Fitch ('87)	137	776
2. 3.	Youngstown-Boardman ('80)	76	690
3. 4.	Canfield	72	597
4. 5.	Youngstown-Ursuline ('81)	50	362
5. 7.	Niles-McKinley ('91)	67	311
6. 6.	Warren-Kennedy ('88)	31	277
7. 8.	Poland ('89)	34	262
8. 9.	Youngstown-Mooney ('93)	118	216
9. 1.	Howland ('94)	46	46

WESTERN OHIO

'95 '94	Chapter	New	Total
1. 2.	*West Carrollton	10	651
2. 3.	+Toledo-Whitmer ('74)	29	635
3. 5.	Kettering-Fairmont ('86)	56	616
4. 4.	*Thomas Worthington	12	601
5. 6.	Sylvania-Southview	5	549
6. 7.	*Marysville ('76)	14	471
7. 8.	Sylvania-Northview ('84)	31	410
8. 10.	Fairborn	23	353
9. 9.	Hayes ('62)	0	337
10. 11.	Elgin	0	329
11. 12.	Princeton ('83)	23	308
12. 15.	Dayton-Oakwood ('91)	76	281
13. 13.	*Miami Valley School	8	249

14. 23.	Centerville ('93)	127	225
15. 17.	Findlay ('90)	26	185
16. 16.	*Troy	6	173
16. 18.	Gahanna-Lincoln ('89)	17	173
18. 19.	Notre Dame Academy	0	153
19. 22.	#Stebbins	3	127
19. 21.	*Toledo Central Catholic	1	127
21. 24.	Brookville	15	106
22. 25.	Beavercreek ('92)	18	96
23. 1.	Middletown ('94)	30	30
24. 26.	*Worthington Kilbourne	0	28

EAST OKLAHOMA

'95 '94	Chapter	New	Total
1. 2.	+Charles Page ('80)	31	576
2. 3.	Bartlesville	61	543
3. 5.	Tulsa-Washington ('87)	78	529
4. 5.	Oologah	22	473
5. 4.	*Broken Arrow ('91)	18	471
6. 8.	Pryor	25	467
7. 7.	Tulsa-Memorial	0	449
8. 9.	Tulsa-Union	7	346
9. 10.	Miami ('84)	31	331
10. 12.	Ponca City ('89)	53	267
11. 11.	Ada	1	239
12. 13.	Muskogee ('81)	16	226
13. 14.	Seminole ('90)	35	223
14. 15.	Grove	16	194
15. 16.	Cascia Hall Prep	19	192
16. 19.	Muldrow	30	182
17. 17.	Picher-Cardin	19	181
18. 17.	Vinita	14	176
19. 23.	Jenks ('92)	73	166
19. 20.	Talihina	16	166
21. 22.	Mannford	38	164
22. 21.	Bishop Kelley	33	161
23. 26.	Bixby	31	111
24. 28.	Sapulpa ('93)	52	105
24. 24.	Claremore	16	105
26. 32.	Stilwell	37	76
27. 31.	Keota	29	70
27. 30.	Owasso	26	70
29. 27.	*Buffalo Valley	0	64
30. 1.	Shawnee ('94)	30	30

WEST OKLAHOMA

'95 '94	Chapter	New	Total
1. 2.	+Edmond-Memorial ('82)	51	599
2. 5.	Norman ('89)	115	572
3. 3.	Duncan	9	547
4. 4.	Putnam City-North	39	506
5. 6.	Yukon	18	457
6. 9.	Luther	59	416
7. 7.	*Comanche	18	390
8. 8.	Kingfisher	24	382
9. 12.	Moore	47	362
10. 11.	Lawton ('76)	18	342
11. 10.	#Woodward	9	340
12. 14.	Stillwater	33	316
13. 13.	Putnam City-West ('84)	8	312
14. 15.	Bishop McGuinness	20	300
15. 17.	Okla City-Heritage Hall ('85)	28	280
15. 18.	Edmond North	35	280
17. 16.	*Mustang ('88)	5	261
18. 20.	Alva ('91)	74	260
19. 19.	Fairview	18	248
20. 24.	Guyton ('92)	82	193
21. 21.	Cherokee ('87)	44	173
22. 21.	Westmoore	10	139
23. 25.	Okarche	12	118
24. 27.	Putnam City ('93)	26	95
25. 26.	*McLoud	0	94
26. 28.	*Clayton	12	48
27. 1.	Marietta ('94)	19	19

NORTH OREGON

'95 '94	Chapter	New	Total
1. 4.	+Gresham-Barlow ('84)	53	532
1. 3.	Glencoe	30	532
3. 2.	*Tillamook	8	520
4. 5.	Canby Union ('87)	33	454
5. 6.	Silverton Union	25	421
6. 7.	Oregon City	49	355
7. 8.	McMinnville	37	312
8. 9.	Portland-Lincoln	47	310
9. 10.	Beaverton ('89)	18	269
10. 13.	Tigard ('88)	34	257
11. 10.	Reynolds ('85)	0	251
12. 12.	Woodburn	17	241
13. 16.	Sandy Union	17	191
14. 15.	Hillsboro ('77)	5	187
15.	- #Rex Putnam	18	164
16. 17.	* Aloha	0	138
17. 18.	* McNary	0	134
18. 20.	South Salem ('84)	11	117
19. 19.	The Dalles	0	107
20. 21.	Sunset ('90)	0	81
21. 1.	Clackamas ('94)	80	80
22. 22.	Gresham ('92)	21	71
23. 23.	Tualatin	28	64
24. 25.	Sprague ('93)	17	26

SOUTH OREGON

'95 '94	Chapter	New	Total
1. 1.#	North Bend Sr.	12	513
2. 4.	Roseburg Sr.	68	401
3. 3.	Grants Pass	24	382
4. 6.	Willamette	32	359
5. 7.	Sheldon	16	305
6. 8.	Marshfield ('87)	17	257
7. 9.	Redmond	11	248
8. 12.	North Medford ('85)	43	237
9. 10.	Mountain View	21	236
10. 11.	Eagle Point ('90)	33	234
11. 2.	Ashland ('94)	102	102
12. 15.	North Valley ('92)	21	83
13. 15.	North Eugene ('91)	16	78
14. 17.	Dallas ('93)	0	3

PENNSYLVANIA

'95 '94	Chapter	New	Total
1. 6.	+McKeesport ('90)	-77	400
2. 2.	Derry ('87)	19	396
3. 3.	*Hempfield ('71)	4	364
4. 4.	Trinity ('84)	26	361
5. 5.	Greensburg Cen Catholic ('86)	15	341
6. 8.	Gateway ('85)	29	273
7. 7.	Rockwood	13	262
8. 9.	Kiski ('88)	18	255
9.	- #Franklin Regional	56	188
10. 10.	Uniontown ('89)	5	174
11. 12.	Belle Vernon ('92)	49	160
12. 11.	Greensburg Salem ('91)	11	128
13. 13.	Norwin ('93)	57	94
14. 1.	Greater Latrobe ('94)	29	29

PITTSBURGH

'95 '94	Chapter	New	Total
1. 2.	+Bethel Park ('78)	50	510
2. 3.	Baldwin-Whitehall School	37	488
3. 5.	Cathedral Prep. ('86)	73	452
4. 4.	Mt. Lebanon ('72)	11	440
5. 5.	Keystone Oaks	12	427
6. 6.	Oakland-Catholic ('70)	14	419
7. 8.	North Catholic ('82)	25	380
8. 10.	Peters Twp ('85)	28	307
9. 9.	Canevin ('73)	14	303
10. 11.	Quigley Catholic ('84)	29	294
11. 13.	Riverside ('87)	30	226
12. 12.	North Allegheny	11	211

13. 14.	Upper St. Clair ('89)	50	203
14. 15.	Mercer Area ('90)	28	173
15. 17.	North Hills ('92)	67	164
16. 16.	Our Lady of Sacred Heart	3	135
17. 19.	Central Catholic ('93)	30	72
18. 18.	Slippery Rock	0	65
19. 1.	Pine-Richland ('94)	60	60
20. 20.	*Vincentian ('91)	0	9

VALLEY FORGE

'95 '94	Chapter	New	Total
1. 2.	+La Salle College ('84)	37	387
2. 3.	Pennsbury ('87)	37	375
3. 7.	Truman ('88)	73	367
4. 5.	Shikellamy ('85)	20	341
5. 4.	Catonsville, MD	2	325
6. 9.	#Danville	62	310
7. 6.	Chambersburg	7	304
8. 8.	Scranton Prep	20	298
9. 11.	Scranton ('89)	39	265
9. 10.	Delone Catholic	22	265
11. 12.	West Catholic	8	227
12. 14.	Gwynedd Mercy Academy	45	218
13. 13.	#Loyola	17	202
14. 15.	*Lower Moreland	0	145
15. 19.	St. Joseph's Prep	11	144
16. 17.	Holy Ghost Prep ('92)	38	138
17. 18.	Lower Merion ('91)	8	84
18. 21.	Radnor ('90)	13	73
19. 20.	Pocono Mountain	0	66
20. 22.	Jenkintown	26	54
21. 23.	Mechanicsburg ('93)	17	39
22. 1.	Calvert Hall College, MD ('94)	17	17

SOUTH CAROLINA

'95 '94	Chapter	New	Total
1. 1.	+Southside	157	594
2. 3.	Mauldin ('85)	58	451
3. 4.	Columbia-Dreher ('79)	42	386
4. 9.	T L Hanna ('91)	98	358
5. 10.	Riverside ('92)	133	351
6. 5.	Porter-Gaud	24	326
7. 8.	Allendale-Fairfax	35	307
8. 6.	Hanahan ('87)	8	299
9. 7.	Wando	9	285
10. 11.	Spring Valley ('83)	19	233
11. 12.	Greenville	15	215
12. 13.	*St. Andrews Parish ('86)	0	197
13. 14.	Westside	15	191
14. 16.	Hillcrest	41	143
15. 15.	Christ Church Episcopal	14	135
16. 17.	Heathwood Hall Epis School	27	117
17. 2.	Bob Jones Academy ('94)	102	102
18. 21.	Pinewood Prep	20	90
19. 18.	Fort Dorchester	3	87
20. 20.	R B Stall	8	81
21. 19.	Ashley Hall	4	78
22. 23.	Richland-Northeast ('88)	23	77
23. 22.	Irmo ('90)	10	74
24. 24.	Summerville ('93)	10	34

NORTHERN SOUTH DAKOTA

'95 '94	Chapter	New	Total
1. 3.	+Madison ('77)	57	590
2. 2.	Groton	36	570
3. 4.	Milbank ('87)	80	515
4. 5.	Mitchell ('90)	48	284
5. 6.	Huron ('88)	54	268
6. 7.	Aberdeen Central ('92)	70	217
7. 1.	Watertown ('94)	203	203
8. 8.	Deuel ('91)	50	186
9. 9.	Brookings ('93)	70	146

RUSHMORE

'95 '94	Chapter	New	Total
1. 3.	+Sioux Falls-Washington ('89)	96	552

2. 2.	Vermillion ('80)	38	521
3. 4.	Rapid City Central ('86)	54	474
4. 5.	Roosevelt	85	371
5. 6.	Rapid City-Stevens ('90)	96	370
6. 9.	Sioux Falls-Lincoln ('93)	125	250
7. 7.	Brandon Valley	0	220
8. 8.	Yankton ('91)	51	191
9. 10.	Beresford ('92)	38	115
10. 1.	Sioux Falls-O'Gorman ('94)	100	100

TENNESSEE

'95 '94	Chapter	New	Total
1. 2.	+Hamblen West	35	479
2. 3.	Brentwood	23	442
3. 5.	Nashville-Overton ('84)	43	437
3. 4.	McGavock	21	437
5. 6.	Germantown	30	412
6. 7.	Goodpasture	42	396
7. 8.	Maryville	34	372
8. 9.	Henry County ('85)	24	314
9. 11.	Dickson County ('57)	36	311
10. 18.	Hunters Lane ('92)	109	304
11. 14.	Clarksville Northeast	30	291
12. 12.	Dobyns-Bennett	17	284
13. 10.	Memphis-Harding Academy ('86)	0	276
14. 13.	Hume-Fogg Magnet	2	264
15. 16.	South-Doyle	7	258
16. 15.	#Nashville-Hillsboro ('78)	0	255
17. 18.	Franklin	56	251
18. 17.	Baylor School	1	249
19. 21.	*St. Agnes Academy ('89)	9	193
20. 22.	University School of Nashville	23	190
21. 20.	*Brentwood Academy	0	186
22. 24.	Collierville	20	164
23. 28.	Montgomery Bell Academy ('93)	79	163
24. 23.	McMinn County	1	159
25. 27.	Cookeville ('91)	30	144
26. 25.	Whites Creek	0	141
26. 26.	Maryville-Heritage ('87)	17	141
28. 30.	Gallatin Sr	36	108
29. 1.	Battle Ground Academy ('94)	104	104
30. 32.	Hillwood Comprehensive ('90)	25	80
31. 29.	Davidson Academy	0	75
32. 31.	Martin Luther Ling Jr Mag	10	72

CENTRAL TEXAS

'95 '94	Chapter	New	Total
1. 2.	*Alamo Heights ('68)	15	509
2. 3.	+L.B.J.	36	444
3. 4.	Taft	33	433
4. 8.	San Antonio-Clark ('89)	67	416
5. 5.	Westlake	31	406
6. 6.	Clemens	21	387
7. 6.	Holmes	11	377
8. 10.	San Antonio-Madison	50	339
9. 9.	Georgetown	26	316
10. 11.	San Antonio-Roosevelt	23	307
11. 12.	Judson	17	296
12. 13.	East Central	17	256
13. 14.	Westwood	19	254
13. 15.	Pflugerville	23	254
15. 19.	Hays ('90)	55	244
16. 20.	San Antonio-MacArthur ('91)	37	213
17. 21.	Round Rock	61	211
18. 18.	San Antonio-Jefferson ('85)	12	207
19. 17.	*John Jay	7	205
20. 23.	San Antonio-Churchill ('93)	86	202
21. 16.	*John Marshall	0	200
22. 22.	Tom Moore	17	157
23. 24.	San Marcos ('92)	39	138
24. 25.	Smithson Valley	14	77
25. 1.	San Antonio-Lee ('94)	63	63
26. -	#Anderson	22	49

27.	26.	Southwest	1	40
28.	29.	#Edgewood Memorial	15	34
29.	28.	*Incarnate Word	0	29

EAST TEXAS

'95	'94	Chapter	New	Total
1.	2.	+Taylor	100	777
2.	4.	Alief Hastings	90	735
3.	3.	Kingwood ('86)	35	685
4.	5.	Baytown-Lee	43	614
5.	7.	Deer Park ('82)	56	600
6.	6.	Stratford	31	581
7.	9.	Klein Forest	15	556
8.	7.	Northbrook Sr. ('78)	8	552
9.	12.	Jersey Village	44	489
10.	14.	The Kinkaid School ('81)	68	487
11.	10.	North Shore	1	480
12.	11.	*St. Thomas	0	472
13.	13.	Cypress-Fairbanks	23	445
14.	16.	McCullough ('91)	91	428
15.	15.	Humble ('84)	27	384
16.	17.	Oak Ridge	25	335
17.	20.	Langham Creek	38	312
18.	19.	Dobie	24	310
19.	21.	Houston-Memorial ('88)	29	302
20.	18.	Houston-MacArthur	7	295
21.	22.	Cypress Creek ('89)	23	291
22.	24.	Clements	58	285
23.	23.	Nacogdoches	13	261
24.	25.	Pasadena ('83)	35	244
25.	27.	Spring ('92)	82	237
26.	26.	Conroe ('87)	34	227
27.	30.	Klein ('93)	73	140
28.	28.	*Barbers Hill	11	135
29.	-	#Cypress Falls	65	115
30.	29.	West Orange-Stark ('90)	17	113
31.	1.	Dulles ('94)	67	67

GULF COAST

'95	'94	Chapter	New	Total
1.	2.	+Corpus Christi-King ('80)	21	487
2.	3.	McAllen ('82)	50	479
3.	4.	Mission	0	421
4.	-	#Alice	20	352
5.	5.	McAllen Memorial	22	349
6.	6.	Gregory-Portland ('91)	69	326
7.	7.	Tuloso-Midway	21	260
8.	8.	Premont	0	218
9.	10.	Calallen	26	206
10.	9.	Harlingen	4	186
11.	11.	Bishop	25	180
12.	12.	Nikki Rowe	25	125
13.	13.	Flour Bluff	18	103
14.	14.	Brazoswood	13	88
15.	22.	Corpus Christi-Carroll ('92)	54	83
16.	18.	Pharr-San Juan-Alamo North	38	81
17.	17.	Harlingen South	35	80
18.	15.	Austwell-Tivoli	13	78
19.	23.	Pharr-San Juan-Alamo ('93)	33	55
20.	-	#Mercedes	24	46
20.	20.	Banquete	10	46
22.	-	#La Joya	15	26
23.	23.	*Roy Miller	0	22
24.	1.	*Corpus Christi-Ray ('94)	0	0

LONESTAR

'95	'94	Chapter	New	Total
1.	2.	+The Greenhill School	32	555
2.	3.	Fort Worth-Southwest	0	475
3.	4.	South Garland	11	471
4.	5.	Midway	68	461
5.	9.	Garland	43	402
5.	8.	Grapevine	39	402
7.	6.	*Waco ('75)	0	391
8.	11.	South Grand Prairie	38	379
9.	10.	Plano-Clark	15	370
10.	12.	Trinity ('88)	31	342

11.	14.	Duncanville ('91)	53	252
12.	15.	Arlington ('90)	48	236
13.	13.	Tyler-Lee ('84)	30	231
14.	16.	Allen	22	173
15.	17.	Plano-Williams	7	146
16.	18.	Terrell	26	139
17.	20.	Plano ('92)	31	124
18.	19.	Grapevine Jr.	23	117
19.	24.	Denton-Ryan	56	99
20.	21.	Wichita Falls ('89)	17	98
21.	22.	The Colony	3	83
22.	23.	*Bridgeport	0	74
23.	1.	Turner ('94)	58	58
24.	26.	Lakeview Centennial	10	47
25.	24.	Dallas-Highland Park ('93)	0	43

NORTH TEXAS LONGHORNS

'95	'94	Chapter	New	Total
1.	2.	+Lewisville	45	448
2.	3.	James Martin	38	440
3.	5.	#Dallas-Jesuit ('76)	17	417
4.	4.	Plano-East	13	415
5.	6.	Richardson	3	375
6.	7.	#Arlington-Sam Houston ('77)	18	369
7.	9.	Denison	13	308
8.	11.	Grand Prairie	13	288
9.	10.	Marcus	8	286
10.	12.	Dallas-Skyline ('85)	12	271
11.	13.	Kaufman	18	255
12.	14.	Copperas Cove	11	247
13.	16.	Vines ('91)	51	238
14.	15.	St. Mark's School ('86)	15	203
15.	18.	Newman Smith ('93)	94	182
16.	17.	*Killeen	0	175
17.	19.	Burleson ('90)	31	109
18.	1.	Shepton ('94)	56	56
19.	21.	Hockaday School ('92)	17	54
19.	20.	Berkner	0	54
21.	-	#Naaman Forest	31	41

SOUTH TEXAS

'95	'94	Chapter	New	Total
1.	4.	+Westfield	70	513
2.	2.	Houston-Spring Woods ('83)	0	503
3.	3.	Houston-Jesuit ('79)	38	483
4.	5.	Klein Oak	10	400
5.	7.	*Houston-Lamar ('76)	12	346
6.	10.	Lamar Consolidated ('90)	94	313
7.	8.	Houston-Eisenhower	19	299
8.	9.	St. Agnes Academy	15	253
9.	18.	Houston-Bellaire ('93)	135	238
10.	11.	Clear Creek ('87)	16	230
11.	12.	Aldine Sr.	33	225
12.	14.	A & M Consolidated	37	216
13.	15.	Clear Lake ('92)	48	203
14.	16.	Sharpstown	28	181
15.	13.	*Crosby	0	180
16.	17.	Clear Brook	21	158
17.	-	#B. F. Terry	30	73
18.	-	#Texas City	19	48
19.	1.	Friendswood ('94)	41	41

TALL COTTON

'95	'94	Chapter	New	Total
1.	-	+Odessa-Permian	87	464
2.	2.	Cooper ('87)	50	375
3.	3.	Hobbs, NM ('86)	15	301
4.	4.	Dumas	16	206
5.	8.	Amarillo ('92)	66	202
6.	5.	Pampa	14	197
7.	6.	*Lubbock-Coronado ('88)	9	190
8.	7.	Levelland	7	187
9.	9.	Midland-Lee ('90)	69	183
10.	-	San Angelo Central ('91)	47	170
11.	10.	Hereford ('91)	52	158
12.	13.	Odessa Sr. ('93)	52	128
13.	-	#Frenship	71	125

14.	-	*Midland ('89)	3	118
15.	11.	Lubbock ('90)	30	118
16.	11.	*Lubbock-Monterey ('89)	8	96
17.	1.	Amarillo-Tascosa ('94)	42	42
18.	-	#Highland Park	24	38

WEST TEXAS

'95	'94	Chapter	New	Total
1.	2.	+Ysleta	36	421
2.	2.	Eastwood ('84)	33	418
3.	5.	El Paso-Coronado	20	383
4.	6.	El Paso-Del Valle	39	338
5.	9.	Montwood	84	322
6.	7.	*Bel Air	9	304
7.	8.	*Irvin	0	250
8.	10.	Hanks ('92)	77	243
9.	14.	El Paso-Austin	13	127
10.	15.	Riverside	0	109
11.	16.	*Van Horn	0	78
12.	-	#Andress	28	75
13.	-	#Socorro	35	74
14.	17.	Bowie	0	63
15.	1.	El Paso-Cathedral ('94)	56	56
16.	18.	Monahans	0	55
17.	19.	Loretto Academy ('93)	14	43
18.	-	#Canutillo	3	32

GREAT SALT LAKE

'95	'94	Chapter	New	Total
1.	3.	+Rowland Hall-St. Mark's	37	553
2.	4.	Salt Lake City-West	44	434
3.	5.	Salt Lake City-East ('87)	60	424
4.	1.	Cyrus	19	397
5.	11.	Kearns ('92)	149	320
6.	6.	Olympus ('89)	39	303
7.	7.	Brighton ('88)	39	290
8.	9.	Hunter	62	279
9.	8.	Taylorsville	0	243
10.	10.	Salt Lake City-Highland ('90)	44	225
11.	12.	Cottonwood ('93)	89	174
12.	2.	Salt Lake City-Skyline ('94)	100	100
13.	13.	*Murray ('91)	11	74

SUNDANCE

'95	'94	Chapter	New	Total
1.	2.	+West Jordan	26	759
2.	3.	Uintah	64	709
3.	4.	Alta ('88)	88	692
4.	5.	Orem ('85)	29	613
5.	-	#Jordan	92	571
6.	7.	Cedar City	41	570
7.	6.	*Provo ('82)	0	558
8.	8.	Hillcrest ('89)	58	470
9.	9.	Lehi ('86)	0	357
10.	10.	Bingham ('92)	48	298
11.	11.	Carbon ('90)	15	232
12.	12.	*Timpview ('87)	0	208
13.	14.	American Fork ('91)	70	202
14.	13.	Grand County	22	182
15.	16.	Granger ('93)	46	68
15.	1.	Mountain View ('94)	68	68
17.	15.	*Beaver	0	54

UTAH WASATCH

'95	'94	Chapter	New	Total
1.	3.	+Woods Cross	24	460
2.	4.	Layton ('90)	51	459
3.	1.	Clearfield	3	455
4.	6.	Bountiful ('85)	54	441
5.	5.	Box Elder ('79)	8	398
6.	7.	Ogden-Weber ('83)	19	384
7.	9.	Davis ('88)	37	361
8.	8.	Logan ('78)	33	360
9.	10.	Delta	26	345
10.	11.	Bear River ('66)	8	324
11.	13.	Ogden ('91)	78	250

12.	12.	Ogden-Bonneville ('86)	19	237
13.	14.	Sky View ('89)	44	144
14.	15.	Northridge	59	137
15.	16.	Roy ('92)	17	81
16.	2.	Ogden-Ben Lomond ('94)	35	35
17.	17.	Viewmont ('93)	1	14

EASTERN WASHINGTON

'95 '94	Chapter	New	Total
1.	3. +Central Valley ('82)	52	377
2.	2. Sunnyside ('79)	25	375
3.	5. Gonzaga Prep ('90)	74	296
4.	4. Ferris ('83)	4	278
5.	11. Mead ('93)	131	231
6.	8. University	32	226
7.	6. Shadle Park ('86)	4	222
8.	9. Cheney	15	197
9.	10. Coeur D'Alene, ID ('91)	1	126
10.	12. St. George's School ('87)	0	59
11.	13. Lewis & Clark ('92)	14	47
12.	- #Lake City, ID	35	35
13.	1. Wenatchee ('94)	0	0

PUGET SOUND

'95 '94	Chapter	New	Total
1.	1.+Kent-Meridian ('79)	28	439
2.	3. Bethel	0	381
3.	4. *Bellevue-Interlake ('82)	1	375
4.	5. Mt. Rainier ('84)	31	372
5.	6. Burlington-Edison	27	326
6.	7. Kentwood	22	320
7.	8. Bainbridge Island ('85)	33	278
8.	9. *Seattle-Kennedy	3	237
9.	10. Redmond	0	224
10.	11. Mercer Island ('89)	13	183
11.	16. Shorewood	40	130
12.	15. Kentridge ('90)	24	117
13.	14. Juanita	17	116
14.	17. Mount Vernon ('92)	15	104
15.	18. Mountain View	4	72
16.	19. Sedro Woolley	0	56
17.	20. Bellevue ('91)	14	49
18.	21. Bellevue-Newport ('93)	22	40
18.	2. Oak Harbor ('94)	40	40

WESTERN WASHINGTON

'95 '94	Chapter	New	Total
1.	2. +Auburn Sr. ('90)	144	615
2.	3. Port Angeles	35	485
3.	4. Franklin Pierce	27	469
4.	6. Gig Harbor ('89)	55	416
5.	- #Central Kitsap	113	407
6.	7. Gov. John Rogers ('88)	114	405
7.	5. *Aberdeen	9	402
8.	8. Decatur	29	307

9.	10.	Elma	18	225
10.	12.	Vashon Island	66	212
11.	11.	Peninsula ('86)	0	192
12.	13.	Puyallup ('92)	37	160
13.	14.	Federal Way ('93)	60	150
14.	15.	Bellarmine Prep ('91)	0	50
15.	1.	*Olympia ('94)	0	0

WEST VIRGINIA

'95 '94	Chapter	New	Total
1.	2. Parkersburg South ('91)	36	191
2.	3. +Duval ('89)	19	155
3.	4. Huntington East ('90)	10	93
4.	5. *Fairmont ('88)	0	76
4.	7. Point Pleasant Sr. ('93)	45	76
6.	6. Parkersburg ('92)	14	58
7.	1. Wheeling Park ('94)	43	43

NORTHERN WISCONSIN

'95 '94	Chapter	New	Total
1.	4. +Appleton-East ('89)	108	704
2.	2. Hortonville	55	668
3.	5. Sheboygan-South ('85)	64	655
4.	3. Algoma	48	653
5.	6. Stevens Point ('84)	2	577
6.	9. Waupaca	55	544
7.	7. Sheboygan-North ('87)	11	531
8.	10. Ripon	37	524
9.	8. Eau Claire Memorial ('80)	25	522
10.	11. Menomonie	12	467
11.	12. Notre Dame de la Baie Academy	0	443
12.	14. Wisconsin Rapids-Lincoln ('86)	78	427
13.	13. *Holmen	0	363
14.	15. Ashwaubenon	0	271
15.	16. Little Chute	28	242
16.	17. New London ('91)	43	236
17.	19. Winneconne	48	219
18.	20. Appleton-West ('90)	35	196
19.	18. *Merrill Sr. ('81)	0	172
20.	21. Kaukauna ('88)	14	159
21.	22. Neenah	17	155
22.	23. Omro	34	118
23.	24. Chippewa Falls ('92)	20	90
24.	25. St. Croix Falls ('93)	42	82
25.	1. Durand ('94)	50	50

SOUTHERN WISCONSIN

'95 '94	Chapter	New	Total
1.	2. +Rufus King	28	432
2.	5. Pius XI ('82)	35	407
3.	4. Cedarburg	25	403

4.	6.	Nicolet ('85)	51	391
5.	8.	Black Hawk	24	328
6.	7.	*Janesville-Craig ('81)	0	308
7.	12.	West Bend West ('89)	59	283
7.	9.	Brookfield East ('86)	9	283
9.	10.	Brookfield Central ('90)	21	278
10.	11.	*Muskego ('84)	15	262
11.	13.	Sussex-Hamilton	21	236
12.	15.	Marquette Univ. ('91)	36	196
13.	16.	Hartford ('92)	0	122
14.	17.	Riverside University	0	118
15.	18.	Delavan-Darien ('88)	0	112
16.	19.	West Bend East ('93)	60	107
17.	1.	Wauwatosa East ('94)	9	9

HOLE IN THE WALL

'95 '94	Chapter	New	Total
1.	2. +North Platte, NE ('87)	42	553
2.	4. Cheyenne-East ('85)	101	523
3.	3. Buffalo	18	503
4.	5. Scottsbluff, NE	51	458
5.	7. Sturgis-Brown, SD ('82)	29	424
6.	6. Upton	22	421
7.	10. Cheyenne-Central ('90)	117	416
8.	8. Glenrock	3	378
9.	9. Wheatland	17	338
10.	11. Sioux County, NE	8	279
11.	12. *Douglas	0	242
12.	13. Newcastle ('89)	15	217
13.	15. Chadron, NE	34	146
14.	16. Spearfish, SD	52	138
15.	17. Campbell Co. ('92)	40	125
16.	1. Sheridan ('94)	93	93
17.	18. Leyton, NE	0	82
18.	19. Torrington ('93)	23	46

WIND RIVER

'95 '94	Chapter	New	Total
1.	2. +Worland	65	571
2.	3. Jackson Hole	55	492
3.	4. Green River ('86)	33	452
4.	5. Casper-Kelly Walsh ('88)	41	397
5.	6. Evanston	42	388
6.	8. Casper-Natrona County ('91)	94	364
7.	7. Riverton ('87)	32	310
8.	9. Cody	19	283
9.	10. *Rawlins	21	269
10.	11. Shoshoni	14	232
10.	12. Star Valley	34	232
12.	13. Saratoga	27	224
13.	15. Greybull	38	210
14.	14. Lander Valley ('84)	16	200
15.	16. Powell	36	96
16.	17. Hot Springs County ('92)	34	92
17.	18. Rock Springs ('93)	40	76
18.	1. Laramie ('94)	27	27

NEW NFL MODEM AWAITS YOUR CALL

The NFL has recently installed a new updated modem system. This allows any person with a computer and modem to access NFL data about students, schools, coaches, districts, and chapters. Additionally a bulletin board will contain messages from the NFL office along with the L/D and CX topics.

If you have a computer and modem call (414)748-9393 and try to access the various screens (bulletin board, student file,

coach file, chapter file, district file) available. If your present equipment can not access the NFL system you will need special software which NFL will provide. A diskette containing all necessary software is available from the NFL free of charge along with a booklet on how to install the software and information on the different screens that display data. The software is not copyright protected so the diskette can be passed onto

other schools in the area who also want to access the NFL modem.

When you call or write to the NFL office to request the disk we need to know: Does your computer require a 3 1/2 inch high density diskette, a 3 1/2 inch low density diskette or a 5 1/4 inch diskette. If you have any questions please contact Diane at the NFL office.

NFL'S ALL TIME POINT LEADERS

Student	State	Points	Student	State	Points
Matthew Whitley	TX	1,885	Kevin Lamb	TX	1,612
David Kensinger	KS	1,848	Albert Giang	CA	1,612
Anoop Mishra	AL	1,840	Heath Dixon	TX	1,606
Germaine Hunter	CO	1,749	Amanda Boles	MO	1,600
Ami Arad	CA	1,733	Rebecca Justice	IN	1,600
Laura A. Fernandez	FL	1,722	Chase Wren	TN	1,597
Anton Ford	CA	1,721	Michael K. Erickson	NM	1,596
Sujata B. Barai	IN	1,696	Krissie Hodges	TX	1,596
Ben Johnson	MO	1,696	Sanjay Kumar	MN	1,594
Zach Rieken	MO	1,695	Michael L. Benson	IA	1,589
J. V. Reed	OK	1,680	J. Robert Willard, Jr.	MO	1,586
Scott Howard	TX	1,675	Jennifer Saunders	KS	1,578
Sam Halabi	KS	1,674	David Hale	OK	1,574
Pat Schott	SD	1,661	Dawn Huber	MO	1,569
Steven R. DuBois	KS	1,634	Joey Reske	TX	1,561
Theodore Scutti	CO	1,630	Terra Brown	SD	1,560
Alex Tuckness	MO	1,629	Nathan R. Mather	IA	1,555
Mona Abo-Zena	IA	1,627	Katie Perkins	TX	1,554
Jason Renzelman	WI	1,626	Michael Monniger	KS	1,551
Roy Hanks	OK	1,619	Margaret Feinberg	CO	1,550
Roger Flores	KS	1,618	Brian K. Thompson	NM	1,550
Jay P. Sokolovsky	MN	1,617	Emily Porter	WA	1,549

(Rehmke from page 7)

from dense pollution. Southern cities that started their economic reform years earlier than Beijing are already switching to cleaner natural gas and electrical heating, and are closing down older heavily polluting industries. *China Daily* reported, for example, that "Smog is on the decline" in Chongqing, the largest city in Southern China (Smog breaks in Chongqing," April 25, 1995, p. 3). But I suspect it will be some years before pollution levels are pushed downward in Beijing.

Economist Michael Cox of the Dallas Federal Reserve uses the example of five people dropped in a jungle. If only one has a machete, that person will make much more progress than the others with the help of this tool. Western countries have had these tools - machinery, capital markets, market-based legal institutions and industrial organizations - for over one hundred years. And with these tools western countries moved far

ahead of their Asian counterparts economically. But notice that if any of the people lost in the jungle happen across the trail made by the machete, they can run far faster and rapidly catch up. The long slow progress that gradually accumulated capital in the western world through the last four centuries now enables billions of the world's poor to run along that same already-cleared path. China need not struggle through its own industrial revolution.

The Chinese in Pacific Rim countries like Singapore, Taiwan and Hong Kong have had access to western technology and capital for barely three decades, and have worked and invested themselves out of poverty in just over a generation. The Chinese in China can do the same over the next generation. All they require is open markets and access to capital, that is access to the tools, technologies and techniques that will allow China to integrate itself into the world economy.

(Review from page 9)

ten him/herself into... and yet survive to teach others. And the student debater will find the text to be everything anyone ever wanted to know about debate but was afraid to admit...

Over the years this reader has constantly compared academic debate to chess. *Edition 5 - Strategic Debate* serves as a most important tool to those who need to teach or learn the "rules and moves," as well as launching every reader into the sophistication of competitive academic debate. Every judge, coach, and student of debate should take a look.

(Reviewer Douglas Springer coaches at New Trier, (IL) HS.)

C.D.E. LINCOLN DOUGLAS ROUND ROBIN CHAMPIONSHIP TOURNAMENT

12 Rounds. November 10 - 11, 1995 in Taos, New Mexico.

No entry fees. Free Rooming for Out-of state contestants.

For Invitation or questions write:

CDE
P.O. Box Z
Taos N.M. 87571
505-751-0514

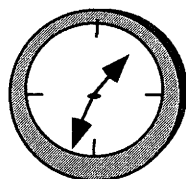
Event Organizing Software

Hosting a Meet at Your School?

Save Hours!!!!!!

- Random sorts contestants, up to 350 at a time, for both IE Events and Debate!
- Minimizes same team meetings!
- Fairly distributes contestants throughout rounds!
- Have 2, 3, 4, 5, 6, 7, 8, 9, 10, 11, 12, 13, 14, or more contestants in a single judging!
- Automatically adds byes!
- Automatically checks your file for duplicates!
- Handles last minute cancelations in minutes!
- Allows comments in contestant files!
- Use your own favorite writing program to enter contestants!

(WordPerfect®, Microsoft Word®, any program that can save in Text Only Format.)



*Your first
Update FREE!
You Pay only
Postage &
Handling.*

Speech—Debate
Meet Match Maker

**No More All Nighters
Preparing for a Meet
at Your School!**

**IBM-Compatible
or Macintosh®**

**Special
Group
rates:**

School District
orders: \$100
district fee plus
\$25 for each
school. Software
can be mailed
directly to
schools or to
district office.

State Orders:
\$500 state fee
plus \$25 per
school. Software
can be mailed
directly to
schools or to
state office.

**We do need a
prepayment on
all orders!**

~~\$79.95~~ **PostPaid \$59.95 till December 1, 1995**

D F Curran Productions, 508 Woodford, P.O. Box 3141, Missoula, MT 59806 (406) 542-0511

DISTRICT STANDINGS

(Summary 1994 - 95)

This summary does not reflect chapter strength. It indicates the average number of new members and degrees added by the Chapters in a district.

Rank	Change	District	New Chapters	Ave. No. Degrees	New Degree Leader	Degrees Added
1.	+1	Northern South Dakota	0	74.22	Watertown	203
2.	+6	Northern Ohio	0	70.11	Austintown-Fitch	137
3.	-2	Rushmore	0	68.30	Sioux Falls-Lincoln	126
4.	-1	Heart of America	0	65.52	Independence-Truman	156
5.	+5	East Kansas	0	64.13	Shawnee Mission-Northwest	196
6.	-	Kansas Flint-Hills	0	58.25	Washburn Rural	154
7.	+8	Great Salt Lake	0	57.75	Kearns	149
8.	+3	Hoosier South	1	54.52	Evansville-Reitz	251
9.	+8	San Francisco Bay	3	54.00	James Logan	168
10.	-6	Show-Me	2	52.93	Lee's Summit	111
11.	-2	West Kansas	1	51.86	Garden City	102
12.	-5	Illini	1	51.05	Downers Grove-South	185
13.	+5	Southern Minnesota	1	51.00	Eagan	128
14.	-2	Central Minnesota	2	50.33	Forest Lake	162
15.	+1	Sierra	1	50.31	Bakersfield	138
16.	-11	Sundance	1	47.64	Jordan	92
17.	+34	Western Washington	1	47.13	Auburn	144
18.	+10	New York City	1	46.30	Stuyvesant	180
19.	+15	Northern Illinois	3	46.26	Glanbrook-North	132
20.	+1	Eastern Ohio	1	45.95	Canton-OlenOak	143
21.	+14	Florida Manatee	2	43.85	Martin County	123
22.	+24	Montana	1	43.17	Bozeman	122
23.	-	Nebraska South	0	42.92	Millard-South	108
24.	+12	North East Indiana	2	41.82	Chesterton	165
25.	+12	California Coast	3	40.88	Lynbrook	157
26.	+5	East Texas	1	39.77	Taylor	100
27.	+36	Northwest Indiana	0	39.38	Munster	132
28.	-	Nebraska	1	39.07	Millard-North	148
29.	-	Idaho	0	38.59	Meridian	105
30.	-8	East Missouri	0	38.36	Pattonville	64
31.	-17	South Kansas	1	37.88	Wichita Heights	68
32.	-7	Rocky Mountain-South	1	37.73	Golden	94
33.	+16	New Mexico	1	37.72	Albuquerque Academy	98
34.	+19	Wind River	0	37.11	Casper-Natrona County	94
35.	+15	Hole in the Wall	0	36.94	Cheyenne-Central	117
36.	-3	Ozark	1	36.77	Springfield-Glendale	68
37.	-13	Tall Cotton	2	36.77	Odessa Permian	87
38.	-14	South Carolina	0	36.41	Southside	157
39.	-	Nevada	0	36.28	Green Valley	90
40.	-27	Big Valley	0	36.00	Modesto-Beyer	126
41.	-3	Northern Wisconsin	0	35.91	Appleton East	108
42.	-16	South Texas	2	35.05	Houston-Bellaire	135
43.	+11	Northern Lights	0	35.00	Walker	89
44.	+14	East Los Angeles	0	34.84	Alhambra	90
45.	-1	Colorado	0	34.50	Cherry Creek	146
46.	+26	West Texas	3	34.38	Montwood	84
47.	+13	New York State	0	34.07	Newburgh Free Academy	80
48.	-28	Hoosier Central	0	33.84	Brebeuf Prep	90
49.	+7	West Iowa	2	33.05	West Des Moines-Valley	79
50.	-20	Carver-Truman	0	32.64	Nevada	85
51.	+13	Pittsburgh	0	31.77	Cathedral Prep	73
52.	-7	Southern California	0	31.70	Redlands	99
53.	+4	Rocky Mountain-North	3	31.11	Greeley Central	74
54.	+5	West Oklahoma	1	30.85	Norman	115
55.	-14	Utah Wasatch	0	30.35	Ogden	78
56.	-4	Eastern Washington	1	29.76	Mead	131
57.	-10	South Oregon	1	29.71	Ashland	102
58.	-15	Tarheel East	0	29.60	Northeastern	52
59.	+17	Carolina West	3	29.38	High Point-Central	71
59.	+8	Deep South	2	29.38	Saint James	76
61.	-19	Capitol Valley	0	29.16	Sacramento-Kennedy	64
62.	-22	Pennsylvania	1	29.14	McKeesport Area	77
63.	+4	Tennessee	1	28.80	Hunters Lane	109
64.	-3	East Iowa	3	28.66	Muscatine	70
65.	-33	East Oklahoma	0	28.56	Tulsa-Washington	78
66.	+15	Arizona	3	28.39	Dobson	90
67.	+3	North Coast (Ohio)	1	28.21	Gilmour Academy	85
68.	-49	South Florida	1	28.20	Miami-Palmetto Jr.	139
68.	+3	Central Texas	2	28.20	San Antonio-Churchill	86
68.	+1	Greater Illinois	1	28.20	Normal Community	55
71.	-16	North Dakota Roughrider	2	28.11	Beulah	55
72.	+17	Michigan	1	27.92	Portage Central	78
73.	-11	Lone Star	0	26.44	Midway	68
74.	+11	New England	2	26.15	Lexington, MA	106
75.	+17	Maine	0	26.08	Cape Elizabeth	91
76.	-3	Florida Sunshine	0	25.94	Academy of the Holy Names	91
77.	-3	West Los Angeles	1	25.92	Taft	87
78.	-3	North Texas Longhorns	3	25.20	Newman Smith	94
79.	+8	Southern Colorado	3	24.78	Sierra	48
80.	+6	Valley Forge	2	24.71	Truman	73
81.	-4	Southern Wisconsin	0	24.56	West Bend East	60
82.	+12	Mid-Atlantic	1	24.24	James Madison, VA	91
83.	-18	West Virginia	0	23.85	Pt. Pleasant	45
84.	-4	North Oregon	1	23.82	Clackamas	80
85.	-37	Louisiana	0	23.43	Caddo Magnet	59
86.	-8	Gulf Coast	3	23.30	Gregory-Portland	69
87.	+8	Big Orange	1	22.85	Huntington Beach	94
88.	-	Georgia Northern Mountain	2	22.75	Gainesville	52
89.	-7	Western Ohio	1	22.73	Centerville	127
90.	-2	New Jersey	2	21.88	Bergenfield	57
91.	-7	Iroquois	0	21.63	Bishop Kearney	50
92.	-	Georgia Southern Peach	5	21.04	Carrollton	53
93.	-27	Mississippi	1	20.64	Jackson Prep	44
94.	-1	Puget Sound	1	19.64	Oak Harbor	40
95.	-5	Kentucky	0	18.57	Rowan County	53
96.	-6	Alaska	0	18.00	Robert Service	34
97.	-1	Hawaii	1	16.56	Kamehameha	49
98.	-15	Patrick Henry	0	13.73	Princess Anne	38
99.	-2	Guam	0	10.00	Academy of our Lady of Guam	26

IN MEMORIAM: WAYNE BROWN

Wayne Brown, Hall of Fame Coach, owner of Dale Publishing, producer of the National Forensic Library of video tapes died suddenly of a heart attack on July 30. He was 55.

Born September 15, 1939, in Sedalla, MO, Wayne was a graduate of Smith-Cotton High School in Sedalla and received his B. S. and M.S. from Central Missouri State University. Mr. Brown coached at Smith-Cotton HS and Kansas City Center HS where he retired in 1993 after 30 years as a debate coach and speech teacher. He received four diamond key awards and was inducted into the Hall of Fame of the National Forensic League in 1994. He was a member of Speech and Theatre Association of Missouri and a recipient of the Missouri Speech Teacher of the Year Award. Mr. Brown was also a member and Elder of John Knox Kirk Presbyterian Church. Survivors include his wife, Carla Brown, daughters, Jennifer and Kathryn, and Elizabeth Miller and Wynne D. Brown, all of Kansas City.

Wayne compiled an outstanding record: 45 students to 17 national tournaments who competed in 339 rounds; Two leading chapter awards; Three district trophies. He was to return to debate coaching at Lee's Summit High School

this fall where his daughters debate.

His products at Dale Publishing, debate handbooks and videos, were known for high quality. He directed the Midwest Debate Institute, one of the most respected regional debate camps.

The address for the scholarship fund in honor of Wayne Brown is:

**Wayne Brown Memorial
Scholarship Fund
Heartland Community Credit
Union
8825 Wornall Avenue
Kansas City, MO 64114**

Mrs. Carla Brown will continue Wayne's work at Dale Publishing and serve as debate coach at Lee's Summit (MO) HS. The Midwest Institute will continue with Wayne's loyal staff. A scholarship fund has been set up so Wayne's many friends may memorialize his work.

That Wayne was elected district chair when Missouri was a huge single district and future Hall of Fame super-

star coaches Margaret Merideth, Louie Banker, Mabel Hale and Ron Schaefer were at their competitive zenith, shows the respect his colleagues had for his fairness and competence.

Friend Ben Martin has written:

Wayne's death has been such a shock here in Missouri. The healing process has begun, but it will take a while. Wayne was going to coach the debate side of our program at Lee's Summit while I would do the interpretation this year. What may not be known was how important Wayne had been to my own development as a coach, teacher, and just a human being. He was my mentor. And I like to think, he thought of me as a prize pupil, although most definitely a work still in progress. We were both so excited about the prospects of working together at last. We shared lots of laughs and excited sessions putting together our plans for the year. Now those plans are in ruins. I wrote a eulogy that first night after his death to help me understand my own loss and to try to make sense of it. It helped and I would like to share it with others.

(Mr. Martin's eulogy appears below.)

EULOGY: WAYNE BROWN

When one hears of a death it is natural to reflect back on the life that was. So, in the shock and disbelief that I experienced after hearing the news I started remembering. In the car on the way to the Brown's home one story came back to me over and over. And it helped me to make sense of things in a way.

Wayne was my teacher. I never actually took a class from him but he was my teacher nonetheless. One of my favorite lessons was a time that he was talking to a group of us about how to run a speech tournament. He said he had a little speech he gave at the beginning of every tournament to his students. I have since given it at the beginning of every tournament that I host, too. It goes like this:

"One of the key things to running a good tournament is thinking things through. I do not want to see anyone running with a panicked look on their face. Because once students from the other schools see you upset, they will get upset and the tournament will be in trouble. Remember, no problem is so urgent that it can't be solved just as effectively 5 minutes from now instead of right now. In fact, we can probably solve it more effectively 5 minutes from now. So if there are any small problems along the way, say, for example, one of the wings of the building has collapsed, here is how I want you to handle them. Walk calmly to the coaches' lounge. I will be there drinking coffee and enjoying the conversation. Knock on the door and say "Mr. Brown, we have a slight problem" I will finish my coffee and then join you and we will solve the problem together."

The key to finding a solution is the unspoken part of that story. Because my students and I have found over the years, that the slow, calm walk to find help always allowed us to think and reflect. Most of the time we didn't even need to get to the coaches' lounge before we figured out a solution, a way of dealing with the situation. I'm sure Wayne knew that was an inherent part of his lesson and his whole purpose as a teacher.

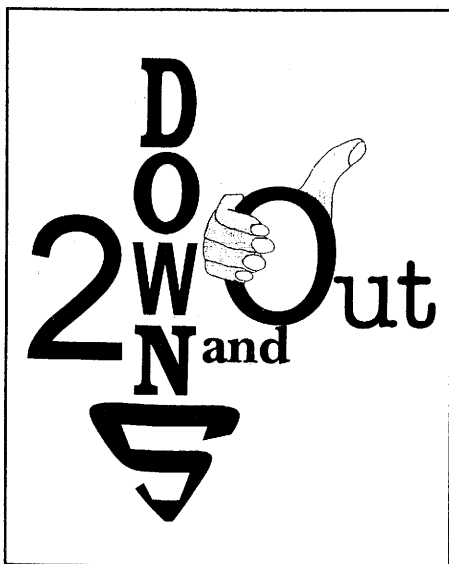
You know as well as I do that teaching is one of the oddest professions. You work your whole life to try to get the people you are working with, the students, to not need you anymore. It is the ultimate in planned obsolescence. Our whole job is to get students to think and act without having to rely on us for information or the skills to make that information usable. Of course, we hope they will still think of us, and let us know how they are doing and maybe do us the favor of asking for advice now and then. But we, as teachers, recognize that our real goal is to send those bright and talented young people out into the world to be on their own.

Well, we've been thrust out into that world now without our teacher. We feel like the whole building has collapsed around us and we are in pain. We are lost and we want so badly to have his help, to have him put down that omnipresent cup of coffee and pipe and bring that unconditional belief in our ability to us. But I feel like I can't find that coaches' lounge, no matter how hard I search. And it is scary.

But, he is still with us. Because he was the consummate teacher. We each carry a little image of Wayne with us in the stories he told us, the lessons he taught us and the quiet confidence he showered upon us. It will vary depending on whether we knew him as husband, father, teacher, colleague...or friend. However, it is still Wayne and all the knowledge, love, and wisdom he poured into us. And as we walk toward that coaches' lounge, where undoubtedly Louis Banker has enlisted Wayne's help in some scheme or another, we can use that resource to help us understand what it is that we are supposed to do next, to keep the 'tournament' running smoothly.

Godspeed, Wayne. And may God's grace heal the pain you and I and all who knew Wayne feel today.

Ben Martin



PRIDE IN THE PROFESSION

I was about to deliver the opening lecture to the Fort Hays State University Talking Tiger Debate Workshop when I was asked to take a phone call from James Morrill. I was pretty pumped up because there were over one hundred students and coaches waiting to hear the outline to the topic. I was using an outline stolen from a list compiled by Mr. Morrill from Raytown South High School near Kansas City, delivered during the Midwest Debate Camp that had just concluded the day before. I wondered what James needed to tell me that couldn't wait. Maybe he needed to kid me about my lazy lecture notes.

He told me that Wayne Brown had suffered a heart attack and died.

Now, I had shaken Wayne's hand just two days before and bid him good-bye for another year, until the Camp met again in the summer of 1996. It would be my ninth year at the camp, held at Rockhurst University in the heart of K.C. Each year I would show up with my new campaign on how to debate, and the students, mostly from Missouri and Kansas, and the staff of Missouri High School coaches with grace would let me rave and let me deceive myself that I had a good idea until my own students could put me in my place. I would take reams of notes from other lecturers, which I would use again and again in my own classes. Every year I would steal the ideas of Randy Pierce and write a column or two. Eric Morris, as our college advocate, would listen to my

brainstorms, quietly demonstrate they were nothing new, and then explain them to me. I would be enthralled by the brilliant spiels of Tim Gore, who I believe is the best lecturer I have ever had the pleasure to view. In short, two weeks of debate bliss. For all this, I would be paid excessively, and go off recharged for the new school year. It's a cliché, I know, but I really should have paid for the privilege.

And all of this was the work of Wayne Brown.

There are many who can and did give eulogies to Mr. Brown at his funeral. They knew him much better than I did. They knew him as a teacher, a coach, a father and a husband. Wayne Brown brought even more lustre to the illustrious Coaches Hall of Fame.

But each life, as it passes, gives each witness a different view, and my perspective of Mr. Brown was, gained from the two weeks every year at his camp, his stand that high school coaches have the responsibility to raise their profession at the level to serve all students, not just their own. He believed, and he ACTED upon this belief, that this responsibility extends unto all twelve months of the year.

That was the principle of the Midwest Debate Camp. It is the principle of the Fort Hays camp also, founded by Gary Harmon, Richard Young and Roger Brannan about a decade ago, and where I was teaching when James gave me this news. Though each camp has been very successful, they remain the exceptions to the rule that summer camps for debaters are run by colleges and universities, and overwhelmingly staffed by university instructors and students.

The Midwest Camp began as a teeny-tiny venture -- I think it already had run a couple of years before I even heard of it and sent a student who returned quoting me chapter and verse of the scriptures of Randy Pierce. It then continued to grow until it reached a level of seventy students or more each year. We were crammed into the largest classroom on the campus to listen to local experts on each year's topic, not just arguments and strategies. And each speaker pounded into us the unrelenting principle that debating is first a matter of honor, and then a matter of winning.

And Mr. Brown did all the work

of organizing the camp, copying the evidence, and looking after the kids who inevitably go sick. He rarely gave a lecture, and when he did, he dressed up in a suit to deliver it, in spite of the Kansas City summer blast furnace. I asked him why he thought he needed to suffer to lecture (I, clad in my roly-poly shorts and tee-shirts) and he said "Because it's an occasion to respect." Shut my mouth.

And it was an occasion to respect; imagine, a room full of eager, motivated students and a good chunk of the best of your peers. To give a poor lecture to such an audience would be disgraceful. And so we worked hard to be scintillating. Some of the time, we could even be as good as Tim.

Mr. Brown didn't make much money; this year we teased him that we served as his tax write-off. The Midwest Debate Camp was a labor in support of the principle. If high school debaters deserved trained, certified teachers in December, they deserved them in July also.

I hope that the high school faculty that worked the Midwest Camp will somehow manage to piece together yet another Midwest Debate Camp. I hope that Mr. Harmon and Mr. Young will arrange yet another soiree in Hays, America. But what if we don't find the glue that Mr. Brown used to put it together?

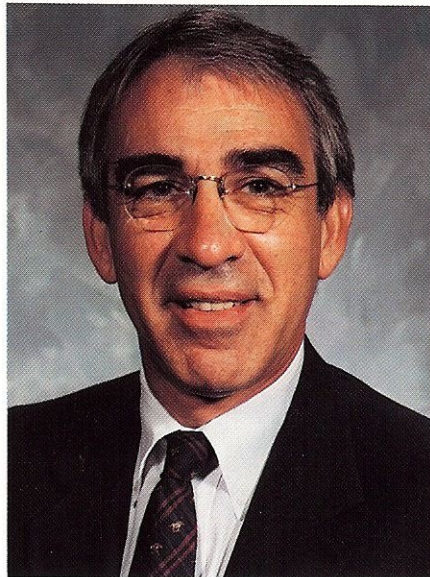
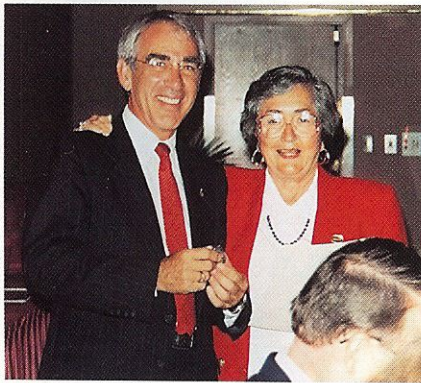
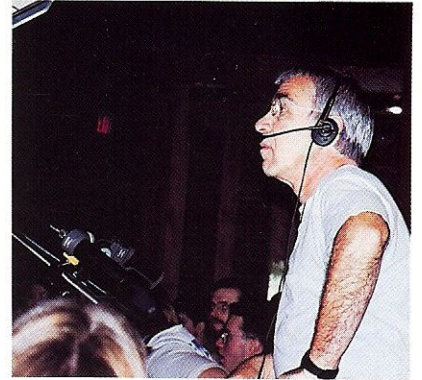
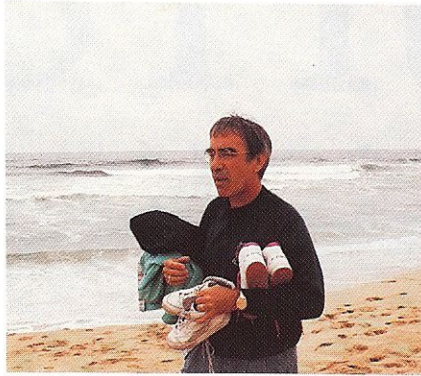
Once again, the students on the Midwest will not have the option of choosing a camp run by the people who know their activity the best, and who have the most to lose from having their training conducted badly. These summer students are obviously among the most motivated in the activity -- the high school coaching fraternity cannot afford to deny them the best.

No, I am not saying that college and university camps should not be in the business of educating; else what are they for? And it is because of a great lack of commitment by high school coaches that the opportunity for these college camps exists. After all, we have them nine geologic epochs a year, who needs 'em during the short, short summer?

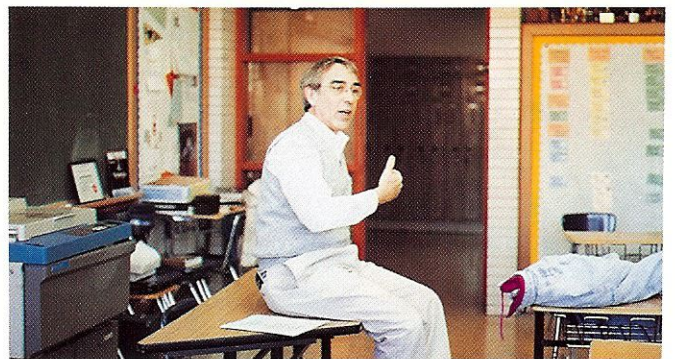
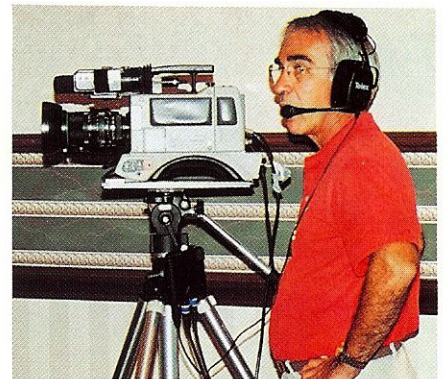
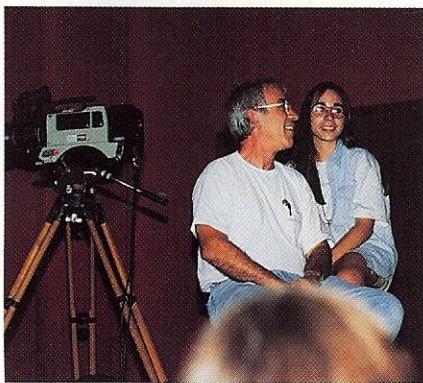
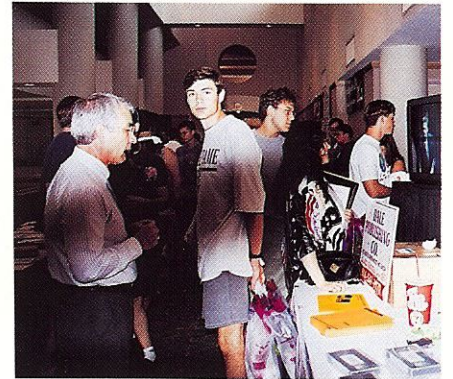
Wayne Brown provided the answer to that. It is his example that I cite. There will never be another Mr. Brown, but it is our duty to continue his work.

(Bill Davis coaches at Blue Valley, (KS) and writes this regular Rostrum column.)

IN MEMORIAM



WAYNE BROWN
1939 - 1995



**Phillips Petroleum is the National Sponsor of
the National Forensic League.**



This publication is made possible by the Phillips Petroleum Company.